

WELCOME!

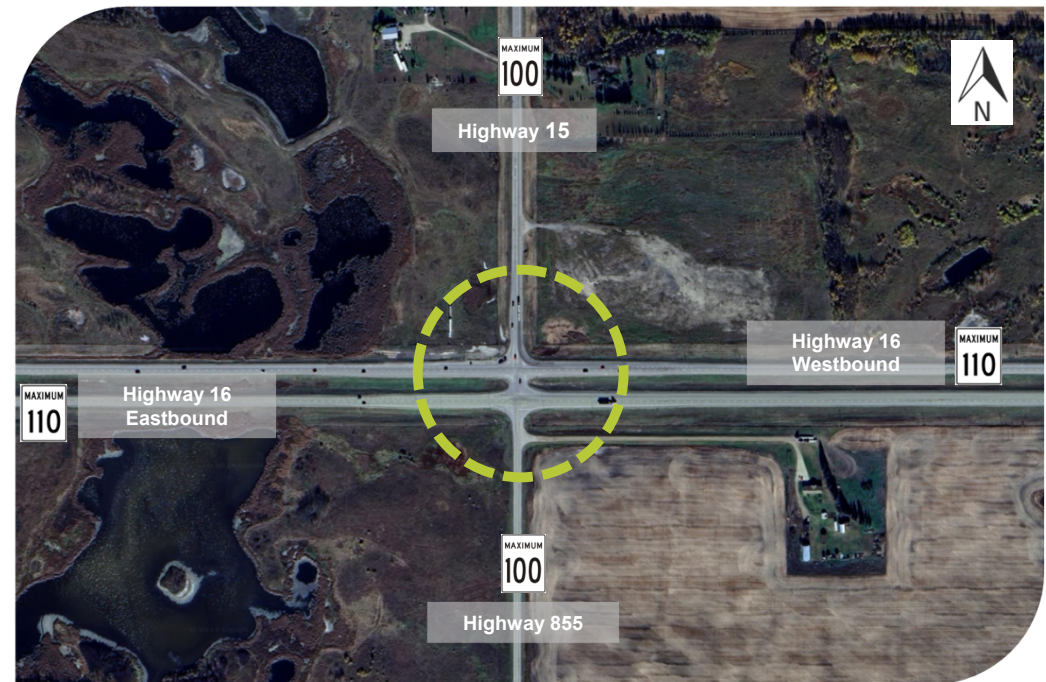
HIGHWAY 16 AND HIGHWAY 15/855 FUNCTIONAL PLAN OPEN HOUSE

Study Objective

Develop conceptual plans for a future interchange at Highway 16 and Highway 15/855 to meet long-term traffic and access management requirements.

Open House Purpose

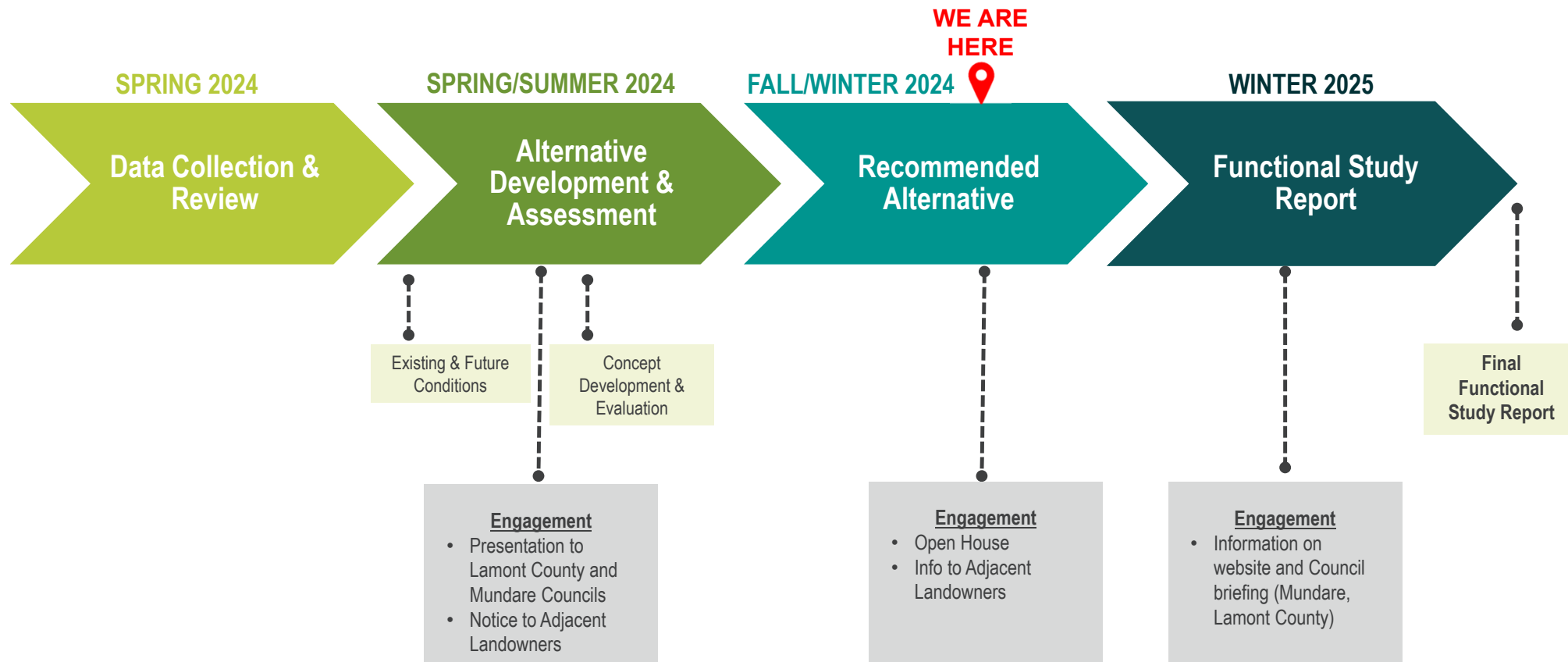
- Introduce the project and study process.
- Present interchange concepts that were explored.
- Gather your feedback.



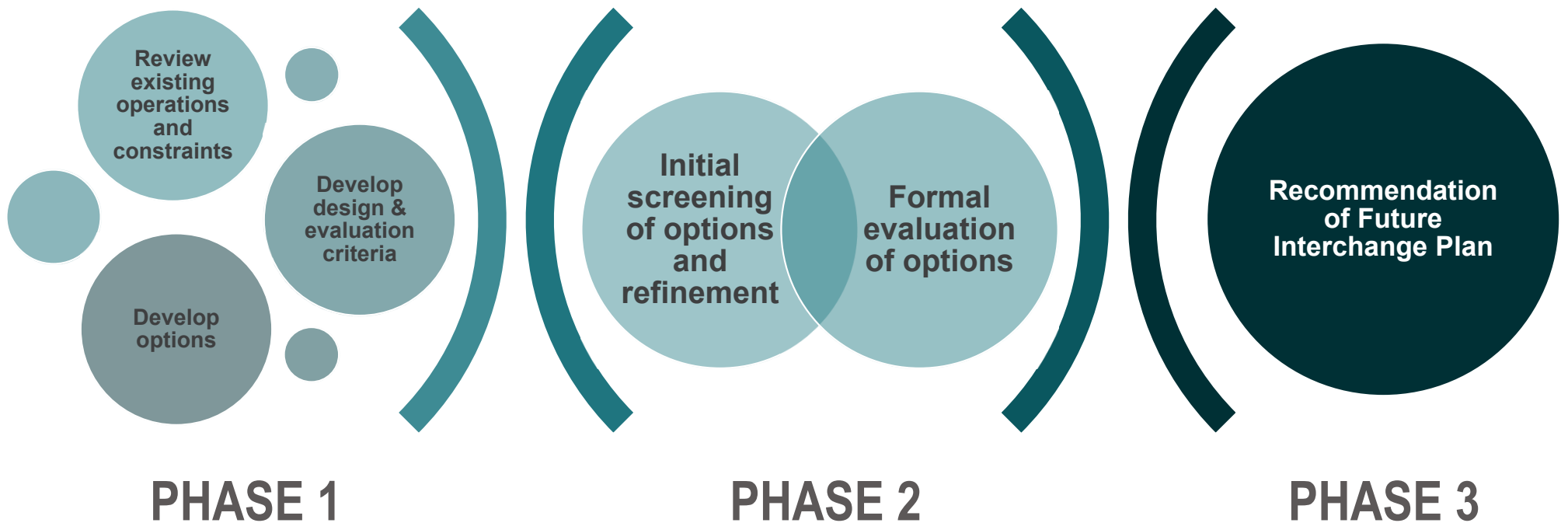
Project Sponsor/Administrator: Alberta Transportation & Economic Corridors
Technical Review Committee (TRC): Town of Mundare, Lamont County | **Consultant:** McElhanney Ltd.



PROJECT PROCESS & TIMELINE



PLANNING PROCESS



OPTION EVALUATION CRITERIA



Cost

Capital and projected maintenance costs for the option, cost of ROW acquisition.



Customer Service

Projected operational (e.g. delays, queues) and safety performance.



Environmental & Geotechnical

Impacts to existing features (wetlands, wildlife, trees, etc.), ground conditions and anticipated soil quality.



Community Sustainability

Perceived public value to the community (Mundare). Access relocations/closures, service roads required, alignment with future land use plans.



Economic Development

Support future growth of the region, ability to move freight and large vehicles.

The options were compared using a Multiple Accounts Evaluation (MAE) to determine the most suitable interchange design.

COMMONALITY IN OPTIONS EVALUATED



Grade Separation (Bridge) over Highway 16

Improved Safety

Improved Traffic Operations

Provides Additional Traffic Capacity for Growth

Accommodation for Large Vehicles and Equipment

OPTION 1: DIAMOND INTERCHANGE



FEATURES:

- Provides free-flow movement for the southbound right and northbound right and better accommodates over-dimensional vehicles due to flatter curves on the ramps.
- Accommodation of the highway on and off ramps in the west is expected to have some impacts to the wetland.

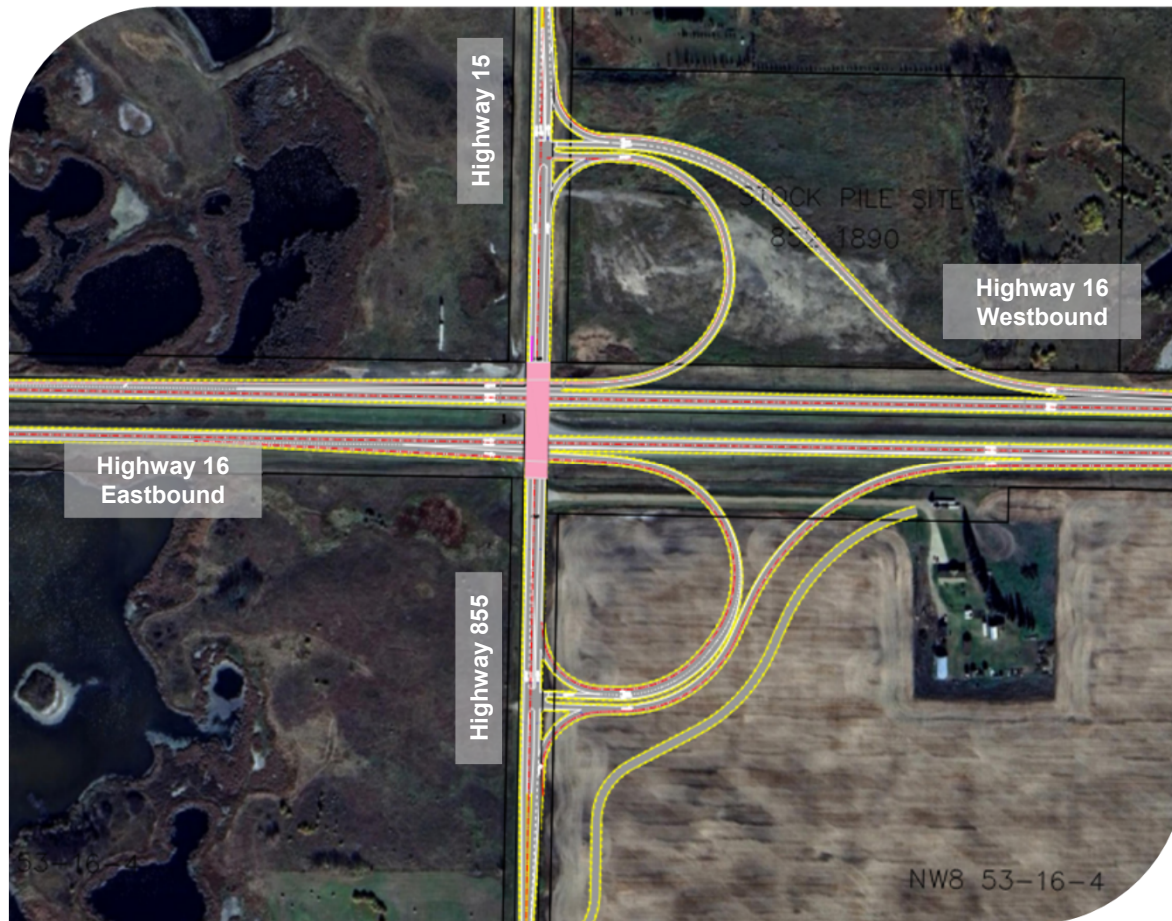
OPTION 2: MODIFIED PARCLO A INTERCHANGE



FEATURES:

- Eastbound to northbound exit loop ramp in the southeast quadrant to operate as a free flow.
- Balances the impacts to the adjacent wetlands and residential properties.
























OPTION 3: PARCLO AB INTERCHANGE



FEATURES:

- Eastbound to northbound exit loop ramp in the southeast quadrant to operate as free flow.
- Southbound to westbound entry loop ramp in the northeast quadrant to operate as free flow.
- Avoids wetlands to the west.

OPTION EVALUATION SUMMARY

Criteria		Option 1	Option 2	Option 3
		Diamond	Modified Parclo A	Parclo AB
	Cost			
	Customer Service			
	Environmental & Geotechnical			
	Community Sustainability			
	Economic Development			
Overall Rating				



RECOMMENDED OPTION



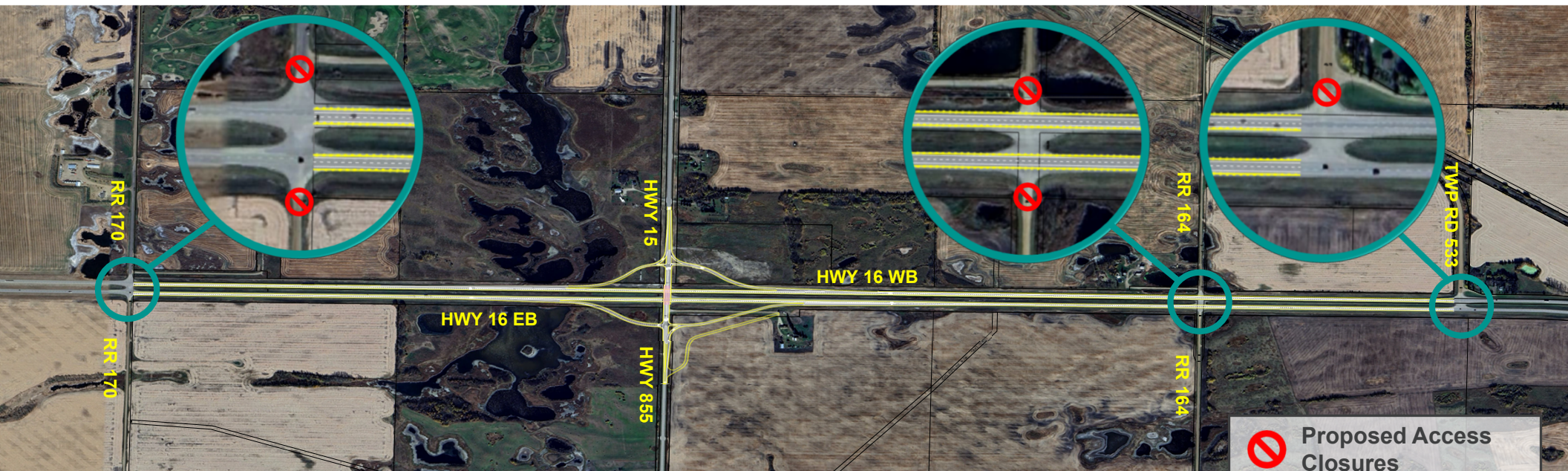
- Cost of Diamond Interchange less than Modified Parclo A.
- Diamond Interchange has less right-of-way and residential impacts.
- Better accommodation for over-dimensional loads.

ACCESS MANAGEMENT PLAN

Highway 16 is classified as a freeway, with the long-term plan to remove all at-grade intersections.

Proposed Access Closures:

- Range Road 164
- Range Road 170
- Township Road 533/RR 163A



NEXT STEPS

We would like to hear from you on the proposed plan and recommendations. By gathering your input today, we can improve the plan.

Please share your thoughts and ideas with a project representative, fill out the questionnaire or email rbetker@mcelhanney.com



- Stakeholder Engagement
 - Information Summary
- Continued Technical Work and Evaluation
- Finalize Future Interchange
- Final Reporting & Project Completion (early 2025)

This interchange is not in the budget for implementation/construction. No immediate improvements are anticipated.

The information shown today will be posted on the study website:
<https://www.alberta.ca/highway-15-and-16-interchange-functional-planning-study>

