

**DOORS**

- SHEET STEEL: ZINC COATED COMMERCIAL TYPE A, (ASTM A653M-04A) COATING (ZF075 OR Z275)
- REINFORCEMENT FOR HARDWARE: CARBON STEEL, WELDED IN PLACE, PRIME PAINTED, TO THE FOLLOWING THICKNESSES:
 

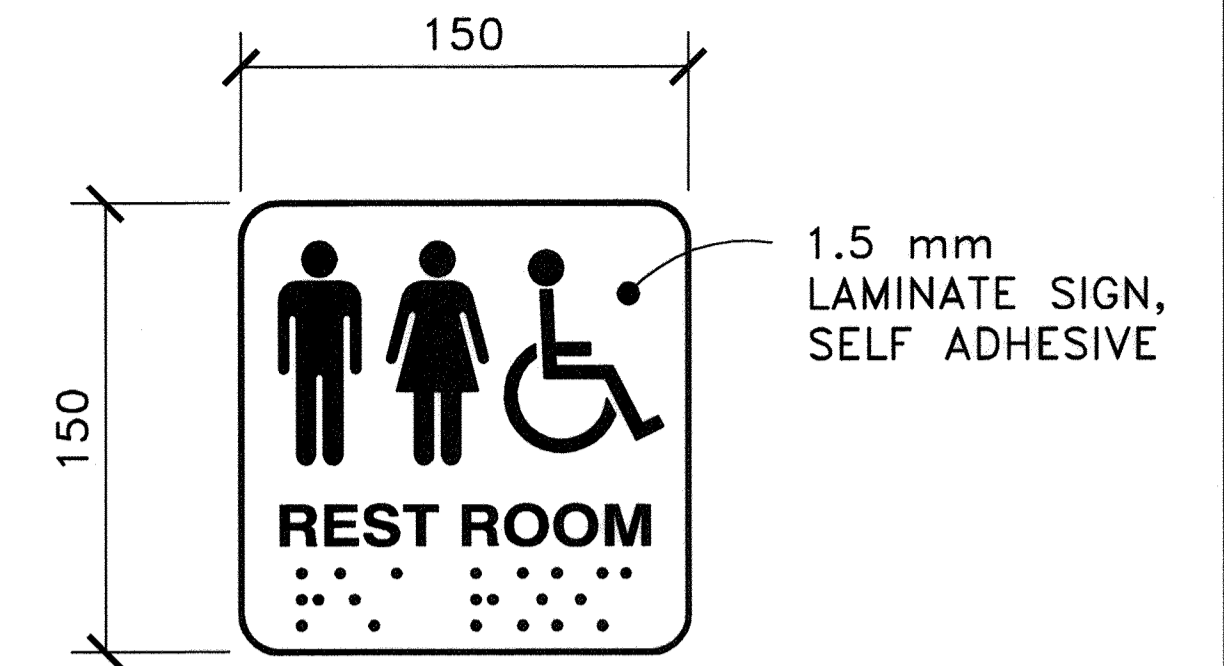
HINGE PIVOT REINFORCEMENTS 30 mm x 250 mm	3.5 mm
LOCK FACE FLUSH BOLTS, CONCEALED BOLTS	2.5 mm
CONCEALED OR SURFACE CLOSER REINFORCEMENTS	2.5 mm
OTHER SURFACE HARDWARE REINFORCEMENTS	2.5 mm
STRIKE REINFORCEMENT	1.6 mm
- INSULATION: EXPANDED POLYURETHANE
- FRAMES: 1.6 mm FOR EXTERIOR DOORS, COMMERCIAL QUALITY STEEL COLD ROLLED (ASTM A653M-96); ZINC COATED (Z275 COATING DESIGNATION FOR EXTERIOR FRAMES).
- ACCESSORIES: FLOOR ANCHORS, CHANNEL SPREADERS, 1.5 mm TEE ANCHORS, 1.2 mm WALL STUD ANCHORS, ZINC COATED (ASTM A653M-04A), COATING DESIGNATION (ZF075 OR Z275). CORRUGATED TEE ANCHORS FOR MASONRY BOND DRILL STUD ANCHORS FOR WIRE TIE TO STUDS LAG BOLTS, SHIELDS AND BUSHING FOR EXISTING OR CONCRETE OPENINGS.
- GUARD BOXES: 0.50 mm STEEL, Z275 COATING DESIGNATION ZINC FINISH (ASTM A653M-96).
- DOOR JAMB REINFORCEMENT: 100 mm X 40 mm STRUCTURAL STEEL CHANNEL (CAN3-G40.21-92).
- SUPPLY EACH TOILET ROOM DOOR COMPLETE WITH THE FOLLOWING HARDWARE:
  - 1 DOOR CLOSER 1250 - (PSH 95 DEG EN)
  - 1 KICKPLATE 250 x 800 (STMS C28)
  - 1 LOCKSET, GRADE 1 LEVER STYLE, PRIVACY LOCK, BRUSHED ALUMINUM FINISH.
  - 1 DEADBOLT, GRADE 1, CYLINDRICAL KEY FROM BOTH SIDES, BRUSHED ALUMINUM FINISH, ALL UNITS KEYED ALIKE.
  - 1 DOOR STOP, FINISH TO MATCH OTHER HARDWARE FINISH
  - 1 DOOR PULL
- SUPPLY EACH SERVICE ROOM DOOR COMPLETE WITH THE FOLLOWING HARDWARE:
  - 1 DOOR CLOSER 1250 - (PSH 95 DEG EN)
  - 1 LOCKSET, GRADE 1, CYLINDRICAL KEY AND LEVER LOCK, BRUSHED ALUMINUM FINISH, ALL UNITS TO BE KEYED ALIKE.
  - 1 DEADBOLT, GRADE 1, CYLINDRICAL KEY, INSIDE TWIST KNOB, BRUSHED ALUMINUM FINISH, ALL UNITS KEYED ALIKE.

**PAINT**

DOOR FRAMES: ALKYD ENAMEL C/W PRIMER  
 SUITABLE FOR GALV. METAL, 2 TOPCOATS  
 INTERIOR WALLS AND FLOOR: HIGH GLOSS URETHANE COATING  
 SUITABLE FOR CONCRETE SURFACES, 2 TOPCOATS  
 SERVICEROOM: UNPAINTED

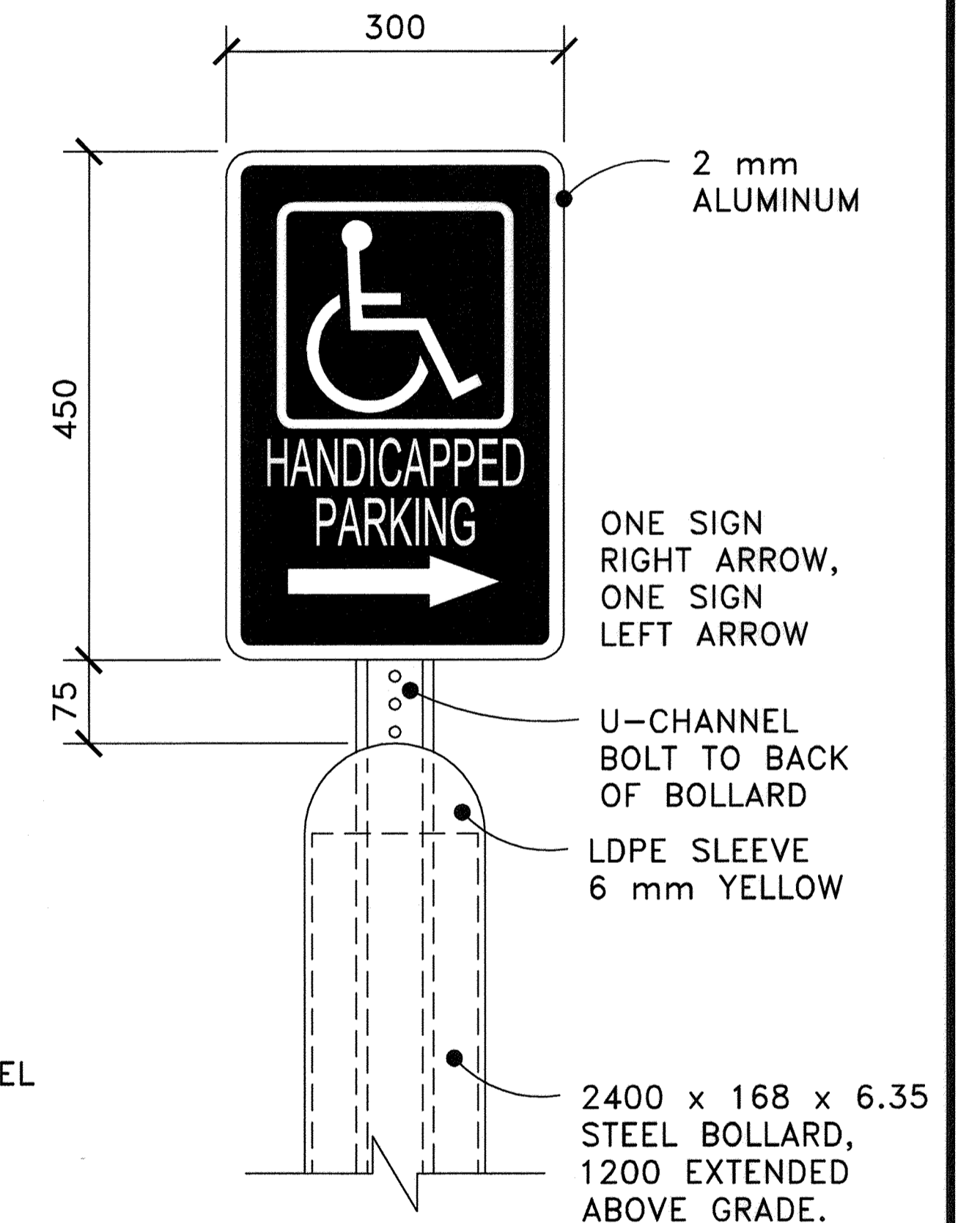
**COLOR SCHEDULE**

DOORS - ROYAL BLUE  
 DOOR FRAMES - ROYAL BLUE  
 ROOF - ROYAL BLUE  
 FACIA AND FACIA J TRIM - ROYAL BLUE  
 SOFFIT AND SOFFIT J TRIM - WHITE  
 CEILING INSIDE - WHITE  
 CONCRETE INTERIOR WALLS - WHITE  
 CONCRETE FLOOR - MEDIUM GREY  
 MECHANICAL ROOM FLOOR GRATES - BLACK  
 TOILET CONE - NOT PAINTED  
 TOILET SEAT - WHITE  
 VENTS ON ROOF - GALVANIZED  
 BOLLARDS - YELLOW  
 BABY CHANGE TABLE - STAINLESS STEEL  
 BUILDING SIGN LETTERS AND PROVINCIAL SIGNATURE - WHITE ON BLUE SHEETING



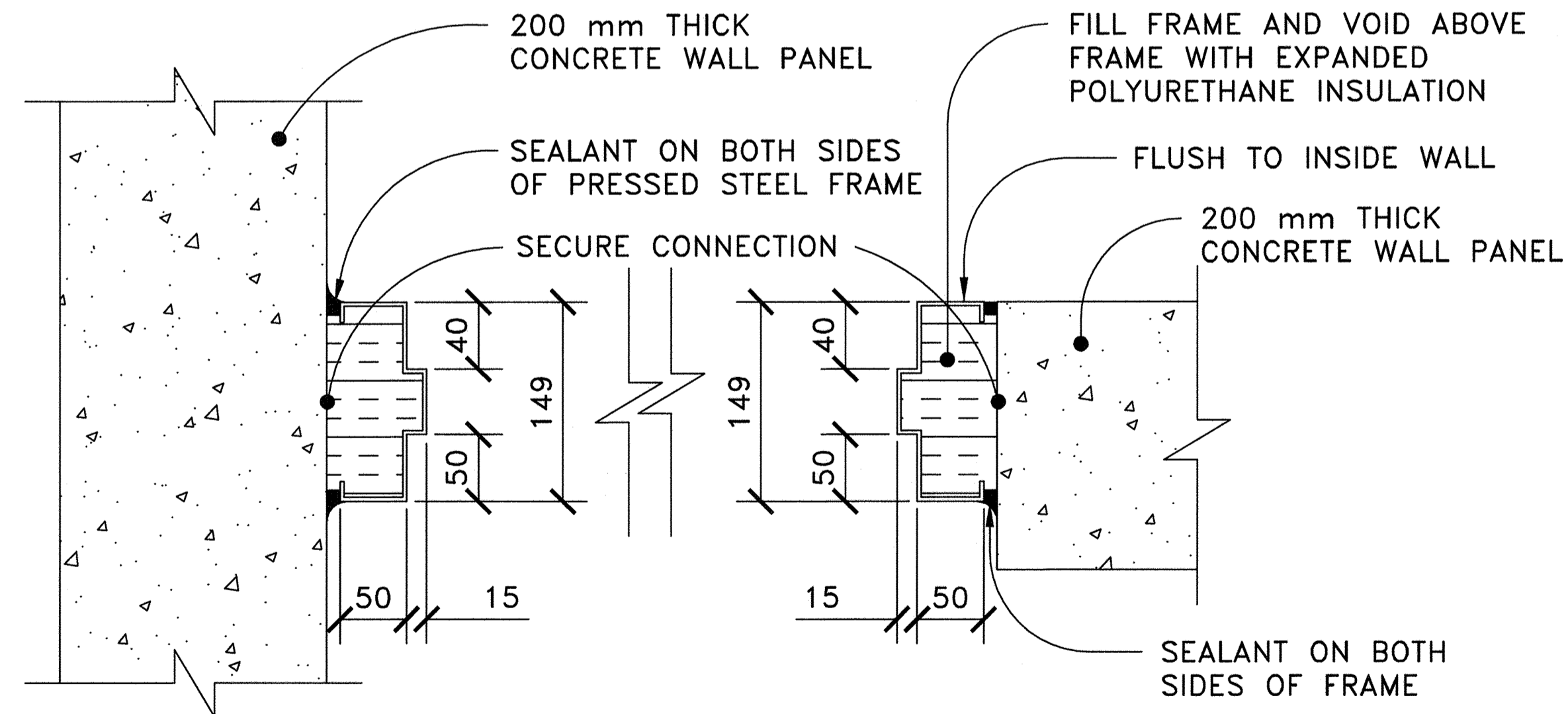
**BRaille/TACTILE SIGN DETAIL**

N.T.S.



**BOLLARD SIGN DETAIL**

N.T.S.



**TYPICAL DOOR JAMB**

N.T.S.

**NOTES:**

- ALL DIMENSIONS SHOWN IN MILLIMETRES
- WORK THESE DRAWINGS TOGETHER CB6-4.6M1 TO 20



REV	DATE	REVISIONS	BY
△	2013-01-18	REVISED SHEET SURROUND	AN
△	2012-01-26	REMOVED SECTION 1, ADDED SPECS AND NOTES, EDITED NOTE	AN
△	2011-06-27	REVISED SECTION 1	AN
△	2009-06-15	REDRAWN	SS
DESIGNER	AN	CHECKER	DATE FEB 8/13

RECOMMENDED DIRECTOR HIGHWAY OPERATIONS  
*SK*  
 APPROVED EXECUTIVE DIRECTOR TECHNICAL STANDARDS BRANCH  
*Shelley*  
**Alberta** Transportation  
**DOUBLE TOILET SECTIONS, DETAILS, AND COLOR SCHEDULE**  
 DEPARTMENT BAR CODE: 2009-06-15  
 DATE: 2009-06-15  
 SHEET: 11 OF 21  
 DRAWING: CB6-4.6M11