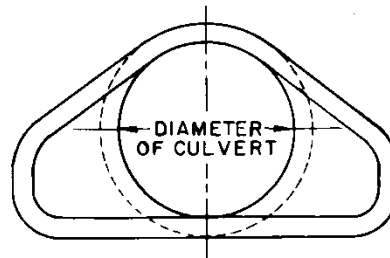
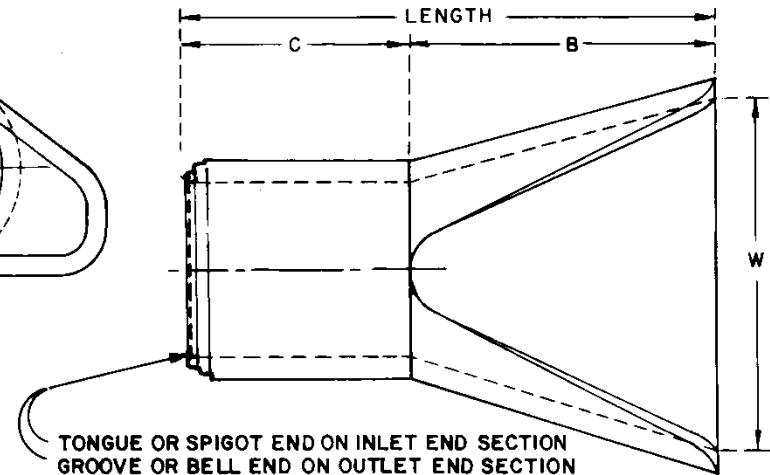


LONGITUDINAL SECTION



END VIEW



PLAN VIEW

DIAMETER	LENGTH	END SECTION WIDTH	APPROXIMATE FLARED END SECTION DIMENSION		
			Amm	Bm	Cm
Dmm	Lm	Wm			
450	1.83	0.91	229	0.66	1.17
525	1.83	1.07	229	0.89	0.94
600	1.83	1.22	241	1.08	0.75
750	2.44	1.52	305	1.34	1.10
900	2.44	1.83	381	1.56	0.88
1200	2.44	2.13	610	1.77	0.67

NOTE: END SECTIONS SHALL CONFORM TO THE DESIGN STANDARDS FOR REINFORCED CONCRETE PIPE.

THE DIMENSIONS FOR END SECTIONS SHALL SUBSTANTIALLY BE IN AGREEMENT WITH THOSE SHOWN IN THE TABLE, HOWEVER MINOR VARIATIONS WILL BE PERMITTED TO ALLOW THE USE OF MANUFACTURERS STANDARD FORMS AND TEMPLATES.

Alberta
TRANSPORTATION
Engineering Division

DWG. No	CB-6 5.16 M 1
	Date
Original	May, 1981
Revised	JAN. 1986

**DETAIL
OF FLARED END SECTION
FOR REINFORCED CONCRETE
PIPE CULVERTS**