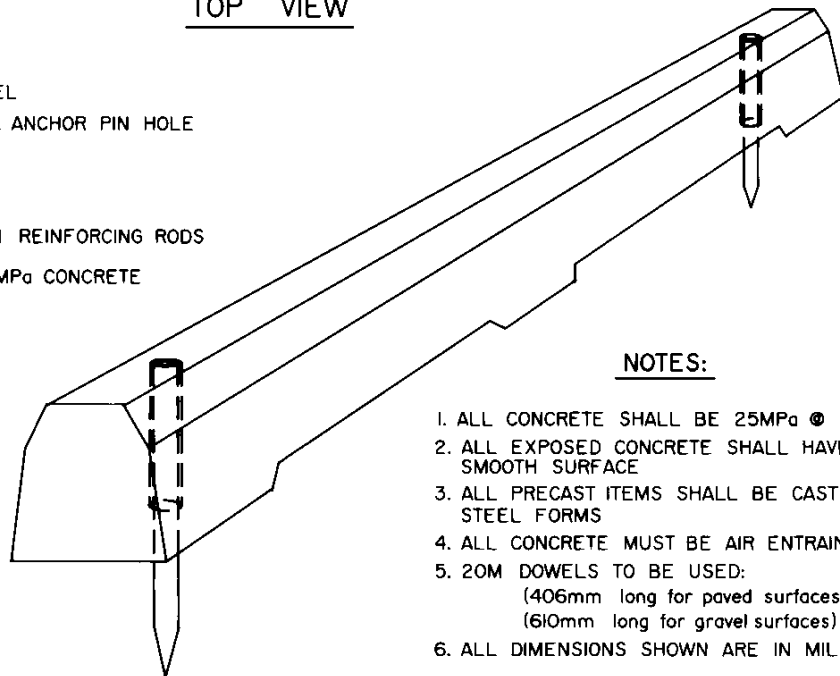
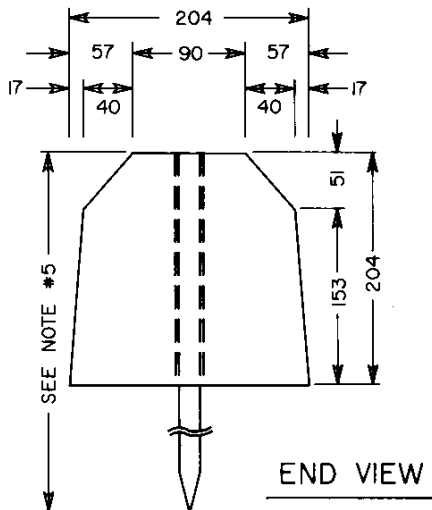


SECTION A-A



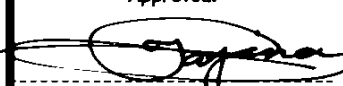
NOTES:

1. ALL CONCRETE SHALL BE 25MPa @ 28 DAYS
2. ALL EXPOSED CONCRETE SHALL HAVE A SMOOTH SURFACE
3. ALL PRECAST ITEMS SHALL BE CAST IN STEEL FORMS
4. ALL CONCRETE MUST BE AIR ENTRAINED 6%
5. 20M DOWELS TO BE USED:
(406mm long for paved surfaces)
(610mm long for gravel surfaces)
6. ALL DIMENSIONS SHOWN ARE IN MILLIMETRES



END VIEW

▲			
▲			
No.	REVISIONS	BY	DATE

Approved:

 Director,
 Design Engineering Branch

Alberta
 TRANSPORTATION
 AND UTILITIES
 Engineering and
 Operations Division

Date: MARCH 8, 1990

**PRECAST CONCRETE CURB
 (200mm PARKING CURB
 WITH DRAINAGE SLOTS)**

Prepared By: BGD	Checked By: B.K.	Scale: N.T.S.	Dwg No.: CB-6 4.2 M77
---------------------	---------------------	------------------	--------------------------