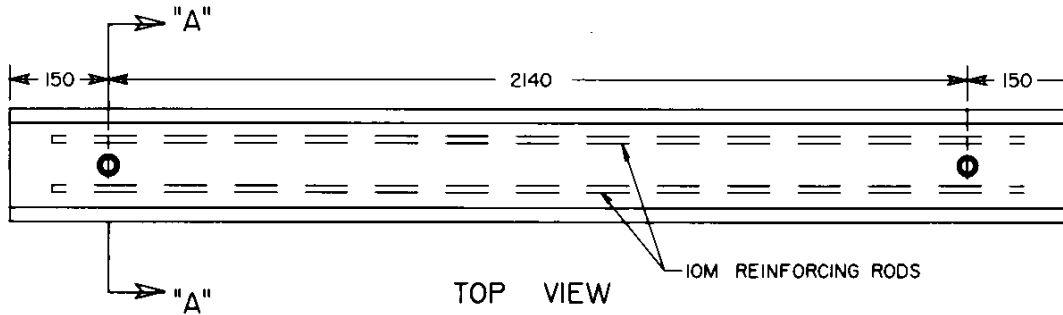
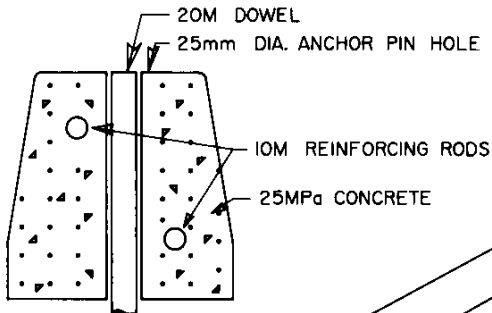


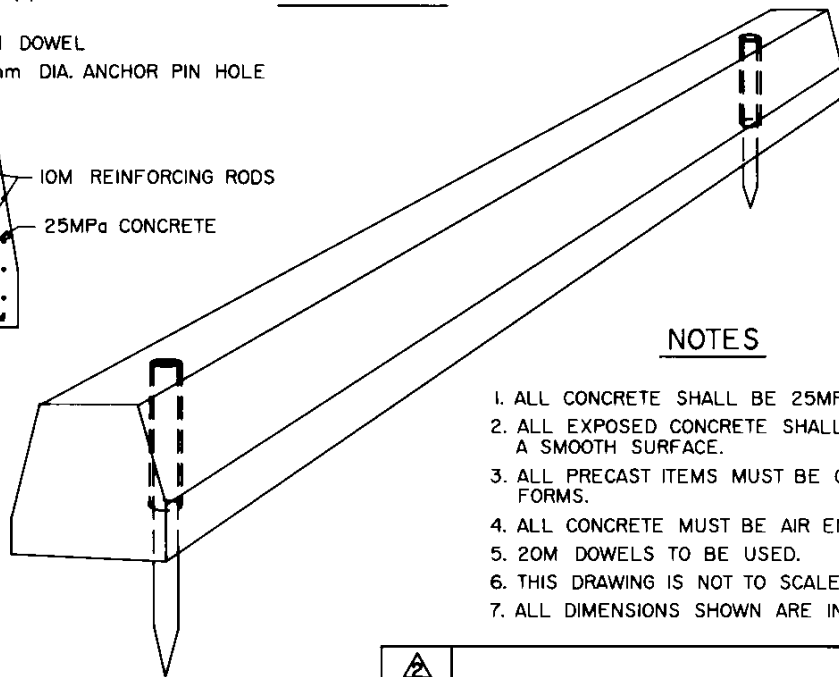
SIDE VIEW



TOP VIEW

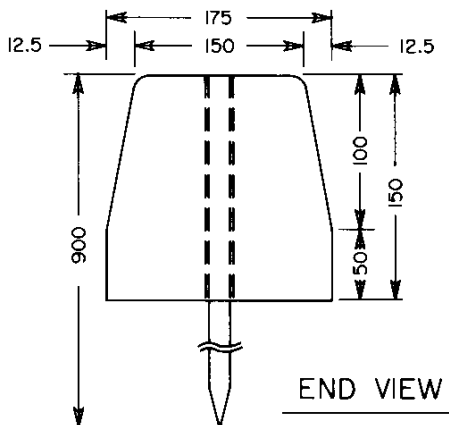


SECTION A-A



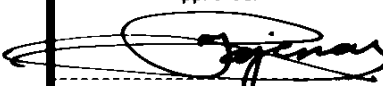
NOTES

1. ALL CONCRETE SHALL BE 25MPa @ 28 DAYS
2. ALL EXPOSED CONCRETE SHALL HAVE A SMOOTH SURFACE.
3. ALL PRECAST ITEMS MUST BE CAST IN METAL FORMS.
4. ALL CONCRETE MUST BE AIR ENTRAINED 6%
5. 20M DOWELS TO BE USED.
6. THIS DRAWING IS NOT TO SCALE.
7. ALL DIMENSIONS SHOWN ARE IN MILLIMETRES.



END VIEW

No.	REVISIONS	BY	DATE

Approved:

 Director,
 Design Engineering Branch

Alberta
 TRANSPORTATION
 AND UTILITIES
 Engineering and
 Operations Division

Date: MARCH 8, 1990

**PRECAST CONCRETE CURB
 (150mm PARKING CURB)**

Prepared By: BGD	Checked By: B.K.	Scale: NTS	Dwg No.: CB-6 4.2 M76
---------------------	---------------------	---------------	--------------------------