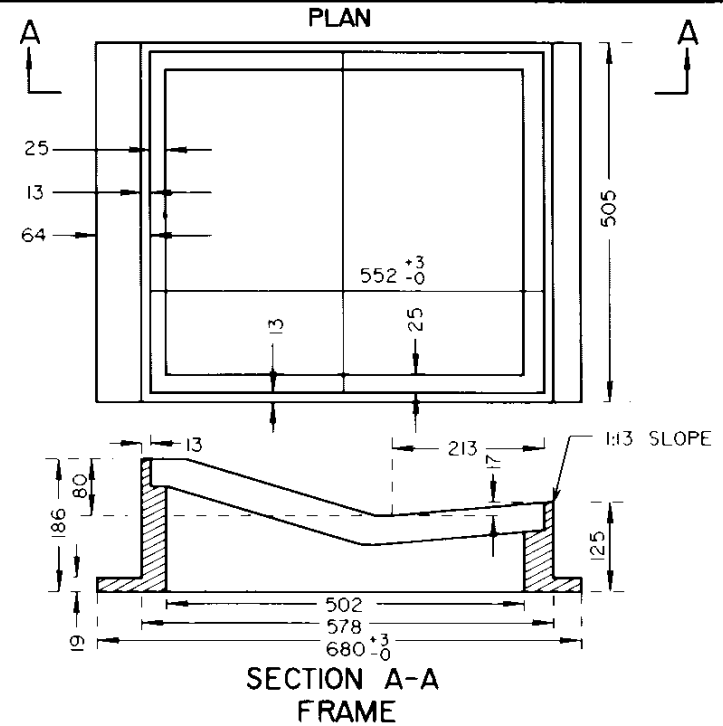




**NOTES:**

1. ALL FRAMES AND COVERS MUST BE NON-COATED.
2. ALL DIMENSIONS ARE IN MILLIMETRES UNLESS OTHERWISE NOTED.
3. THE CASTINGS SHALL BE FREE FROM CRACKS, GASHOLES, FLAWS AND EXCESSIVE SHRINKAGE.
4. FACES OF THE CASTINGS SHALL BE FREE FROM BURNED-ON SAND AND SHALL BE REASONABLY SMOOTH.
5. DRAWINGS ARE BASED ON TYPE K-7 FOUNDRY CASTINGS.
- \*6. THE LETTERING IS TO BE "STANDARD RAISED CAST LETTERING" WITH 50mm SIZE LETTERS.



No.	REVISIONS	BY	DATE

Approved:  Executive Director, Roadway Engineering Branch	
Date: JUNE 22, 1994	

**STORM DRAIN INLET  
MANHOLE FRAME AND COVER  
FOR SEMI-MOUNTABLE CURB**

Prepared By: LT	Checked By: B.K.	Scale: N.T.S.	Dwg No.: CB6-2.10M33
--------------------	---------------------	------------------	-------------------------