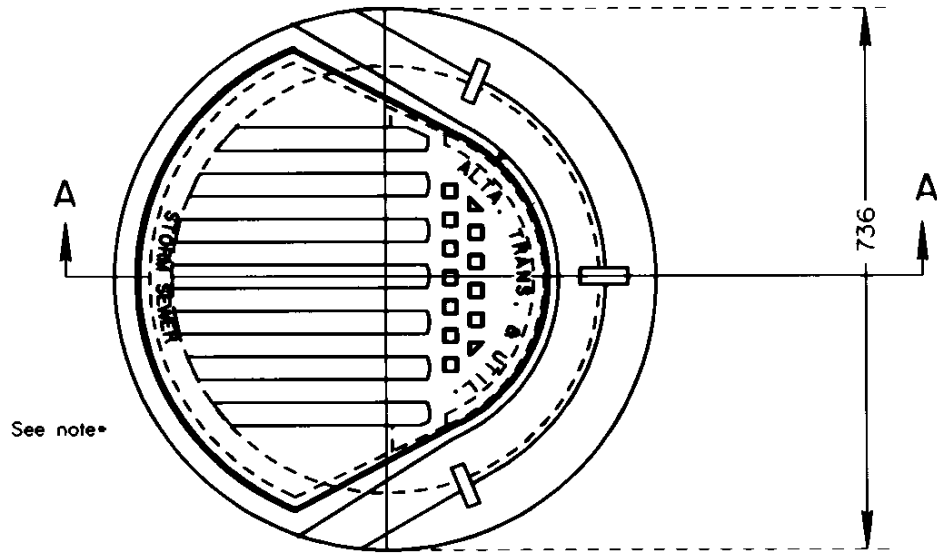
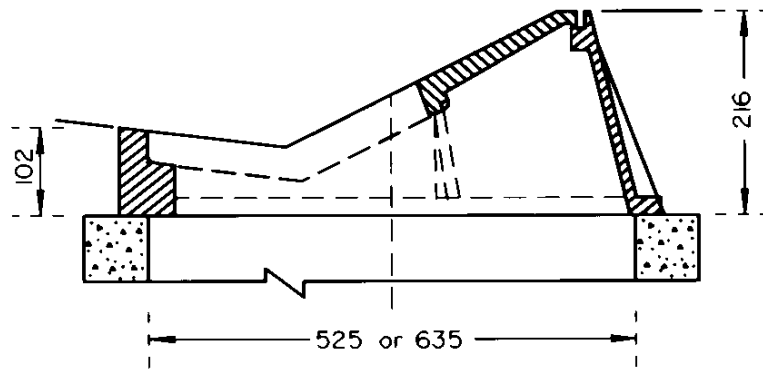


CATCH BASIN FRAME AND COVER FOR SEMI-MOUNTABLE CURB



PLAN OF FRAME AND COVER



SECTION A-A

NOTES:

1. ALL FRAMES AND COVERS MUST BE NON-COATED.
2. ALL DIMENSIONS ARE IN MILLIMETRES UNLESS OTHERWISE NOTED.
3. THE CASTINGS SHALL BE FREE FROM CRACKS, GASHOLES, FLAWS AND EXCESSIVE SHRINKAGE.
4. FACES OF THE CASTINGS SHALL BE FREE FROM BURNED-ON SAND AND SHALL BE REASONABLY SMOOTH.
5. DRAWINGS ARE BASED ON TYPE F-33 FOUNDRY CASTINGS.
- 6. THE LETTERING IS TO BE "STANDARD RAISED CAST LETTERING" WITH 50mm SIZE LETTERS.

△				
△				
No.	REVISIONS		BY	DATE

<p style="text-align: center;">Approved:</p> <p style="text-align: center;"><i>[Signature]</i></p> <p style="text-align: center;">Executive Director, Roadway Engineering Branch</p>	
Date: JUNE 22, 1994	

STORM DRAIN INLET CATCH
BASIN FRAME AND COVER
FOR SEMI-MOUNTABLE CURB

Prepared By: LT	Checked By: <i>B.K.</i>	Scale: N.T.S.	Dwg No.: CB6-2.10 M32
-----------------	-------------------------	---------------	-----------------------

GRAPHICS FILE: DE11(200,22)1cb210m32.dgn