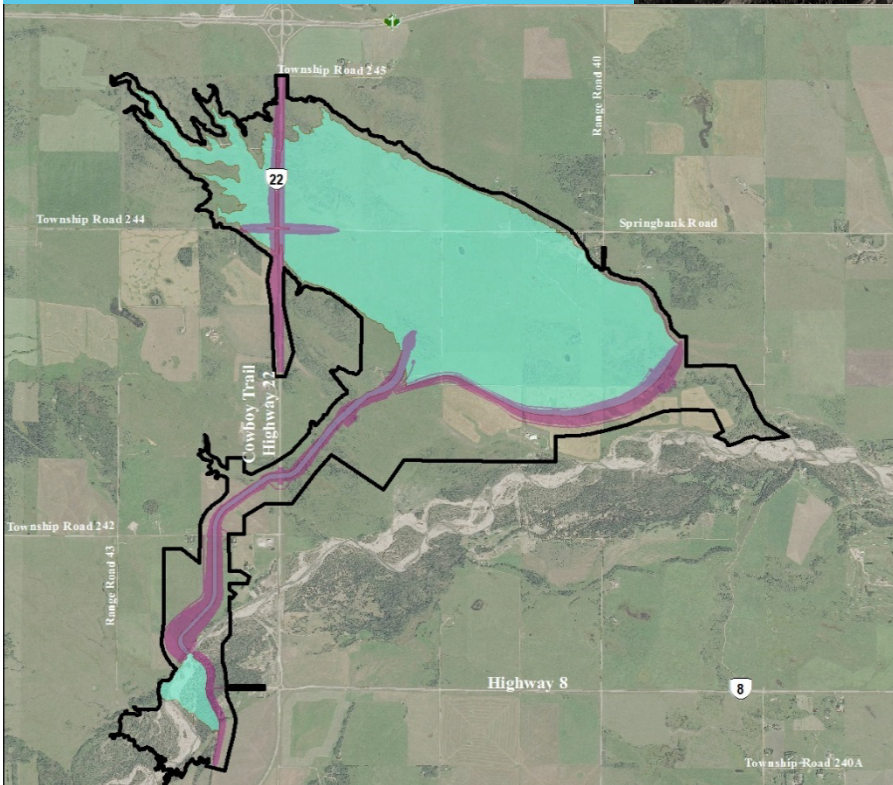


Springbank Off-stream Reservoir Project



Archaeological and Heritage Management Plan

November 2021

**SPRINGBANK OFF-STREAM
RESERVOIR PROJECT
Archaeological and Heritage
Management Plan**



Prepared for:
Alberta Transportation

Prepared by:
Stantec Consulting Ltd.

November 2021

**SPRINGBANK OFF-STREAM RESERVOIR PROJECT
ARCHAEOLOGICAL AND HERITAGE MANAGEMENT PLAN**

Table of Contents

ABBREVIATIONS..... II

1.0 INTRODUCTION 1

1.1 PURPOSE, USE AND DEFINITION 1

1.2 MONITORING..... 2

 1.2.1 CONSTRUCTION.....2

 1.2.2 DRY AND FLOOD OPERATIONS2

2.0 AVOIDANCE MEASURES 3

2.1 CONSTRUCTION..... 3

2.2 DRY AND FLOOD OPERATION 3

3.0 CHANCE FIND PROCEDURE DURING CONSTRUCTION 4

3.1 PROCEDURE STEPS 4

 3.1.1 Indigenous Notification Procedures6

 3.1.2 Regulatory Notification6

3.2 MITIGATION MEASURES 6

4.0 REPORTING PROCESS..... 8

5.0 REFERENCES..... 9

LIST OF FIGURES

Figure 1 Flow Chart of Chance Find Procedure..... 5

LIST OF APPENDICES

Appendix A Standard Requirements Under the *Historical Resources Act*:
Reporting the Discovery of Historic Resources A.1

**SPRINGBANK OFF-STREAM RESERVOIR PROJECT
ARCHAEOLOGICAL AND HERITAGE MANAGEMENT PLAN**

Abbreviations

ACSW	Alberta Culture & Status of Women
HRA	<i>Historical Resources Act</i>
IAAC	Impact Assessment Agency of Canada
PDA	Project Development Area
NRCB	Natural Resources Conservation Board
The Plan	Archaeological and heritage management plan

SPRINGBANK OFF-STREAM RESERVOIR PROJECT ARCHAEOLOGICAL AND HERITAGE MANAGEMENT PLAN

Introduction
November 2021

1.0 INTRODUCTION

1.1 PURPOSE, USE AND DEFINITION

This archaeological and heritage management plan (the Plan) has been created to comply with conditions set out for the Springbank Off-stream Reservoir Project (SR1; the Project) by the Impact Assessment Agency of Canada (IAAC; approval condition 9.3), the Natural Resources Conservation Board (NRCB approval condition Section 7.4.5) and by the Alberta Ministry of Culture and Status of Women (ACSW) (HRA file no. 4825-15-0004). Alberta Transportation has developed this plan in consultation with Indigenous groups¹ and ACSW. This plan also addresses IAAC approval condition 9.9 regarding verification of the accuracy of the Environmental Impact Assessment (EIA).

The Plan is to be used during construction and operation phases of the Project. The Plan accounts for heritage resources which includes: structures, sites, or things of historical, archaeological, palaeontological, or architectural significance or physical or cultural heritage resources within the project development area (PDA), including, but not limited to sites and things subject to the Alberta *Historical Resources Act (HRA)* (Government of Alberta 2021). Heritage resources may be considered to be both cultural and natural objects and also be protected under the *HRA*. Examples of heritage resources that may be encountered include:

- Stone features such as tipi rings
- Cultural/traditional use sites and areas
- Stone and bone artifacts
- Fossils including shells, animal bones and plants
- Structures

Heritage resource sites within the PDA were identified by Indigenous groups during traditional use studies and during pre-impact field assessments conducted for the Project for archaeological and palaeontological resources. The information shared with Alberta Transportation by Indigenous groups was reviewed to determine if sites overlapped with permanent infrastructure (e.g. diversion channel, floodplain berm, off-stream dam, outlet channel), construction footprint and flood areas. Alberta Transportation has confirmed with Indigenous groups who provided site-specific information and with Alberta Culture & Status of Women (ACSW) whether sites can be avoided during construction or flood operations and which ones cannot be avoided. Some site-specific avoidance and mitigation measures will remain in place during the construction and operation phases. Chance finds of previously

¹ Blood Tribe (Kainai First Nation), Ermineskin Cree Nation, Foothills Ojibway First Nation, Louis Bull Tribe, Métis Nation of Alberta, Region 3, Montana First Nation, Piikani Nation, Samson Cree Nation, Siksika Nation, Stoney Nakoda Nations, Tsuut'ina Nation, Ktunaxa Nation

SPRINGBANK OFF-STREAM RESERVOIR PROJECT

ARCHAEOLOGICAL AND HERITAGE MANAGEMENT PLAN

Introduction
November 2021

unrecorded heritage resources may also occur. The Plan details the measures and protocols that must be followed. Alberta Transportation is maintaining the confidentiality of this information.

As of November 17, 2021, mitigative studies (detailed recording and/or excavation) for two archaeological sites are outstanding within the PDA. This work will be completed by the Project Consultant archaeologists prior to footprint-specific construction activities commencing at these archaeological sites. No other sites protected under the *HRA* (e.g. palaeontological or historic period structures) currently require further pre-impact work.

1.2 MONITORING

1.2.1 CONSTRUCTION

The objective of the construction monitoring measures is to allow for recording and if necessary, mitigation of previously unknown heritage resources that may be unearthed during construction.

The Environmental Monitor (EM) and Indigenous Monitors will be present during construction activities and as set out in IAAC Condition 9.1. Indigenous Monitors will be responsible to observe, record and report to Alberta Transportation, and Indigenous groups via Alberta Transportation, requirements of the Plan and the other IAAC approval conditions. Construction monitoring by a qualified palaeontologist is also required for specific project components where construction activities will disturb bedrock. Specifically, this includes excavations at:

- the diversion inlet
- the diversion channel
- Highway 22, in one location where bedrock excavation is required
- utilities if open cut methods are used

As of November 17, 2021, there are no construction monitoring requirements for archaeological or historic period resources.

1.2.2 DRY AND FLOOD OPERATIONS

There are no monitoring requirements during dry and flood operations.

SPRINGBANK OFF-STREAM RESERVOIR PROJECT ARCHAEOLOGICAL AND HERITAGE MANAGEMENT PLAN

Avoidance Measures
November 2021

2.0 AVOIDANCE MEASURES

This section outlines avoidance measures required for known heritage resources within the PDA.

2.1 CONSTRUCTION

Prior to the start of construction, the locations of the known heritage resources will be reviewed by Alberta Transportation and the Contractor and sites within the construction footprint that can be avoided will be identified. Avoidance measures may include temporary flagging, fencing and/or signage. Locations of known heritage sites and avoidance measures will be added to construction drawings. Avoidance measures will be in place for the duration of construction and removed following the completion of construction.

Monitoring of avoidance flagging/fencing installation may be required by the Environmental Monitor and Indigenous Monitors.

2.2 DRY AND FLOOD OPERATION

There are no known sites located within the dry and flood operation area that are protected under the *HRA* that require avoidance.

SPRINGBANK OFF-STREAM RESERVOIR PROJECT ARCHAEOLOGICAL AND HERITAGE MANAGEMENT PLAN

Chance Find Procedure During Construction
November 2021

3.0 CHANCE FIND PROCEDURE DURING CONSTRUCTION

This section outlines the steps to be taken in the event of a chance find of a heritage resource during construction monitoring activities. This procedure allows for monitoring teams to observe, analyze, mitigate and report upon finds of heritage resources while also allowing construction work to continue in a timely fashion. Chance finds of potential heritage resources are to be handled as outlined below (IAAC approval condition 9.3.4 and NRCB approval condition Section 7.4.5).

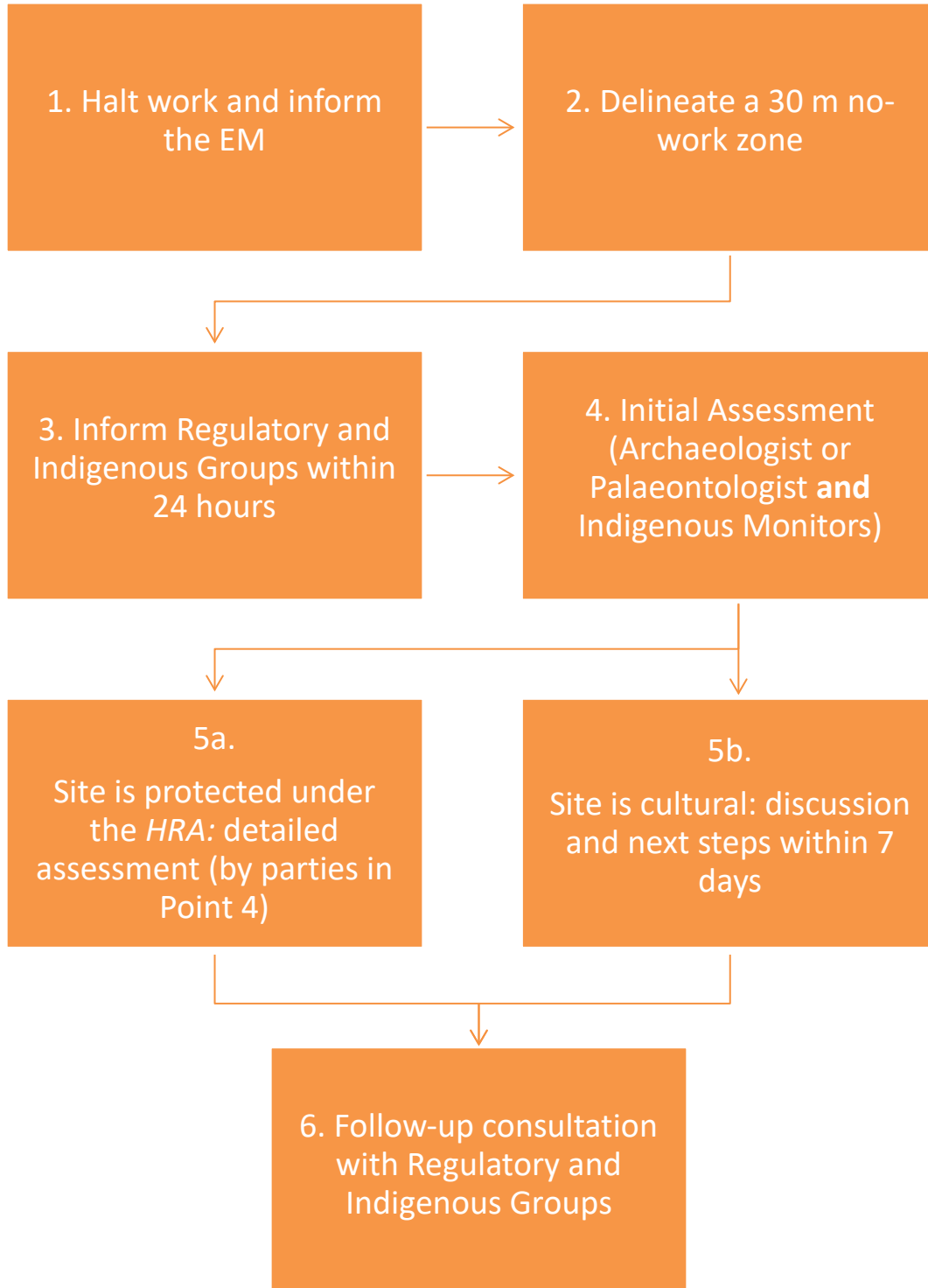
3.1 PROCEDURE STEPS

1. When a potential chance find is encountered construction work is to stop immediately
 - a. Inform the Environmental Monitor
2. A no work zone is to be delineated with staking, flagging and/or fencing; this is to include a 30 m buffer surrounding the chance find
3. The Environmental Monitor will then notify the Project Consultant who in turn will contact ACSW and Indigenous Groups within 24 hours as outlined below in Sections 3.1.1 and 3.1.2
4. A qualified archaeologist or palaeontologist will then conduct a field assessment of the find and apprise ACSW as required; this work will be monitored by Indigenous Monitors. Indigenous groups will also be apprised as required
5. If the find is determined to be:
 - a. protected under the *HRA*, a detailed assessment will be undertaken by a qualified archaeologist or palaeontologist, this will be monitored by Indigenous Monitors
 - i. If requested by Indigenous groups, a desktop assessment can be completed and/or a site visit conducted, to document and assess the traditional importance
 - b. cultural and not within the jurisdiction of the *HRA*, discussion regarding the cultural find (desktop assessment) and next steps will occur amongst Alberta Transportation, the Contractor, the Project Consultant and Indigenous Groups; within seven (7) days of determination of the type of find
6. Follow up discussion and notification with Indigenous Groups and ACSW will occur to close-out the find; this follow up may result in mitigation measures (outlined in Section 3.2 below)

**SPRINGBANK OFF-STREAM RESERVOIR PROJECT
ARCHAEOLOGICAL AND HERITAGE MANAGEMENT PLAN**

Chance Find Procedure During Construction
November 2021

Figure 1 Flow Chart of Chance Find Procedure



SPRINGBANK OFF-STREAM RESERVOIR PROJECT ARCHAEOLOGICAL AND HERITAGE MANAGEMENT PLAN

Chance Find Procedure During Construction
November 2021

3.1.1 Indigenous Notification Procedures

Chance finds are to be reported within 24 hours to the following Consultation Offices by Alberta Transportation. Contact information for Consultation Offices of the groups consulted on the Project are kept up to date by the Alberta Consultation Office, available at:

<https://www.alberta.ca/indigenous-consultation-contacts.aspx> Indigenous groups consulted on the Project are: Blood Tribe (Kainai First Nation), Ermineskin Cree Nation, Foothills Ojibway First Nation, Louis Bull Tribe, Métis Nation of Alberta, Region 3, Montana First Nation, Piikani Nation, Samson Cree Nation, Siksika Nation, Stoney Nakoda Nations, Tsuut'ina Nation, Ktunaxa Nation.

Indigenous groups will be contacted within 24 hours of a historical and cultural find. If a site is determined to be cultural in nature, the next steps will be discussed with Alberta Transportation, the Contractor, the Consultant and Indigenous groups within 7 days.

3.1.2 Regulatory Notification

Appendix A, *Standard Requirements Under the HRA: Reporting the Discovery of Historic Resources* outlines what is to be reported and the appropriate ministry contacts regarding chance finds (Appendix A). Contact is to be made within 24 hours of the find, regardless of confirmation if the site falls under the protection of the *HRA*.

3.2 MITIGATION MEASURES

This section outlines procedures to mitigate effects to known and chance find heritage resources that cannot be avoided. Mitigation measures for chance finds will vary depending on the nature of the discovery.

Mitigation measures related to cultural sites may include conducting pre-construction ceremonies. Alberta Transportation will provide a schedule and updates outlining all activities required to be carried out to Indigenous groups to assist with the scheduling of ceremonies (IAAC Condition 12.1, 12.2 and 12.4). Ceremonies will be conducted by Indigenous group(s) and these may occur on or off site; Alberta Transportation and the Contractor will attend if invited. Written notice (at least 30 days) in advance of construction and the location of the activities will be provided to Indigenous groups so that appropriate mitigation measures can be undertaken.

Direction from ACSW relative to heritage resources protected under the *HRA*, such as palaeontological fossil finds and/or archaeological materials, might include salvage collection. Significant finds may require more detailed study.

IAAC approval condition 9.9 requires verifying the accuracy of the EIA. In alignment with the EIA, pre-impact assessments were completed for archaeology and palaeontology, and as required, the results of these studies have been reported to ACSW. Requirements have been outlined by ACSW to record or mitigate archaeological resources that could not be avoided (IAAC approval condition 9.3.2). This has included detailed recording and/or excavation work which is

SPRINGBANK OFF-STREAM RESERVOIR PROJECT ARCHAEOLOGICAL AND HERITAGE MANAGEMENT PLAN

Chance Find Procedure During Construction
November 2021

largely complete, and the results will be reported to ACSW. Excavation is outstanding at one archaeological site and will be completed in advance of construction activities located near the site. Alberta Transportation has discussed identified cultural sites with respective Indigenous groups, and where possible, made modifications to the construction footprint to attempt to avoid certain cultural sites. No palaeontological sites requiring avoidance or follow-up mitigation were recorded.

SPRINGBANK OFF-STREAM RESERVOIR PROJECT ARCHAEOLOGICAL AND HERITAGE MANAGEMENT PLAN

Reporting Process
November 2021

4.0 REPORTING PROCESS

Two types of reporting may be undertaken for the Project: environmental monitoring reports; and, regulated reports as required by ACSW for heritage resources protected under the *HRA*. Although the latter reports are confidential, Martina Purdon, Manager, Regulatory Approvals & Information Management, Archaeological Survey, ACSW, can be contacted for copies. There are opportunities for sharing information via the environmental monitoring process.

The Environmental Monitor and Indigenous Monitors will complete daily reporting which will include all heritage resource findings. Specific reporting details will be determined by the Contractor with input from Alberta Transportation and the Environmental Monitor. The daily reports will be submitted to the Contractor and Alberta Transportation. Cultural heritage resource sites may also be reported to ACSW, if agreed to by Indigenous groups.

The reporting requirements for sites protected under the *HRA* will be determined at the discretion of ACSW and be undertaken by the Project Consultant. Relative to archaeology, these may include an email summary, short, letter-style report, or a final permit report, depending on the nature and significance of the find. Relative to palaeontology, chance finds will be included in the annual permit reports. If requested, Indigenous Groups will be apprised of these reports. Requests to ACSW will be required to access the reports or information within.

**SPRINGBANK OFF-STREAM RESERVOIR PROJECT
ARCHAEOLOGICAL AND HERITAGE MANAGEMENT PLAN**

References
November 2021

5.0 REFERENCES

Government of Alberta. 2021. *Province of Alberta, Historical Resources Act, Revised Statutes of Alberta 2000 Chapter H-9. Current as of June 2, 2021*. Alberta Queen's Printer. Available online at https://www.qp.alberta.ca/1266.cfm?page=H09.cfm&leg_type=Acts&isbncln=9780779823369

**SPRINGBANK OFF-STREAM RESERVOIR PROJECT
ARCHAEOLOGICAL AND HERITAGE MANAGEMENT PLAN**

References
November 2021

**SPRINGBANK OFF-STREAM RESERVOIR PROJECT
ARCHAEOLOGICAL AND HERITAGE MANAGEMENT PLAN**

Appendix A Standard Requirements Under the Historical Resources Act: Reporting the Discovery of Historic Resources
November 2021

Appendix A **STANDARD REQUIREMENTS UNDER THE
*HISTORICAL RESOURCES ACT: REPORTING
THE DISCOVERY OF HISTORIC RESOURCES***

**SPRINGBANK OFF-STREAM RESERVOIR PROJECT
ARCHAEOLOGICAL AND HERITAGE MANAGEMENT PLAN**

Appendix A Standard Requirements Under the Historical Resources Act: Reporting the Discovery of Historic Resources
November 2021



STANDARD REQUIREMENTS UNDER THE *HISTORICAL RESOURCES ACT*: REPORTING THE DISCOVERY OF HISTORIC RESOURCES

If development proponents and/or their agents become aware of historic resources during the course of development activities, they are required, under Section 31 of the *Historical Resources Act*, to report these discoveries to the Heritage Division of Alberta Culture, Multiculturalism and Status of Women. This requirement applies to all activities in the Province of Alberta.

1.0 REPORTING THE DISCOVERY OF ARCHAEOLOGICAL RESOURCES

The discovery of archaeological resources is to be reported to Darryl Bereziuk, Director, Archaeological Survey, at 780-431-2316 (toll-free by first dialing 310-0000) or darryl.bereziuk@gov.ab.ca.

2.0 REPORTING THE DISCOVERY OF PALAEOONTOLOGICAL RESOURCES

The discovery of palaeontological resources is to be reported to Dan Spivak, Head, Resource Management, Royal Tyrrell Museum of Palaeontology, at 403-820-6210 (toll-free by first dialing 310-0000) or dan.spivak@gov.ab.ca.

3.0 REPORTING THE DISCOVERY OF HISTORIC PERIOD SITES

The discovery of historic structures to be reported to Rebecca Goodenough, Manager, Historic Places Research and Designation Program, at 780-431-2309 (toll-free by first dialing 310-0000) or rebecca.goodenough@gov.ab.ca. Please note that some historic structure sites may also be considered Aboriginal traditional use sites.

4.0 REPORTING THE DISCOVERY OF ABORIGINAL TRADITIONAL USE SITES

The discovery of any Aboriginal traditional use site that is of a type listed below is to be reported to Valerie Knaga, Director, Aboriginal Heritage Section, at 780-431-2371 (toll-free by first dialing 310-0000) or valerie.k.knaga@gov.ab.ca.

Aboriginal Traditional Use sites considered by Alberta Culture, Multiculturalism and Status of Women to be historic resources under the *Historical Resources Act* include:

- Historic cabin remains;
- Historic cabins (unoccupied);
- Cultural or historical community camp sites;



STANDARD REQUIREMENTS UNDER THE *HISTORICAL RESOURCES ACT*: REPORTING THE DISCOVERY OF HISTORIC RESOURCES

Ceremonial sites/Spiritual sites;
Gravesites;
Historic settlements/Homesteads;
Historic sites;
Oral history sites;
Ceremonial plant or mineral gathering sites;
Historical Trail Features; and,
Sweat/Thirst/Fasting Lodge sites

5.0 FURTHER SALVAGE, PRESERVATIVE OR PROTECTIVE MEASURES

If previously unrecorded historic resources are discovered, proponents may be ordered to undertake further salvage, preservative or protective measures or take any other actions that the Minister of Alberta Culture, Multiculturalism and Status of Women considers necessary.