

# Highway 3 Twinning - East of Highway 885 (Whitla) to Medicine Hat - Preliminary Design

---

## Project Introduction

Alberta Transportation and Economic Corridors (TEC) retained AECOM and ISL as consulting team partners to complete the design and construction administration for the twinning of Highway 3 from Whitla to Medicine Hat. This work will include expanding Highway 3 from 1 undivided lane in each direction (2 lanes total), to 2 divided lanes in each direction (4 lanes total).

- The project will consider input from adjacent landowners and businesses, stakeholders including community groups, the City of Medicine Hat, County of Forty Mile, and Cypress County. First Nations consultation is ongoing.
- Interested Albertans can learn more about the project and provide feedback to inform the preliminary design by:
  - Attending a public information session on April 27 and 28, 2026 (drop-in from 4-7pm) that will share the same information; or
  - Completing an online comment form between April 20 to May 12, 2026
- The twinning of Highway 3 will improve safety and efficiency along the corridor.

# Highway 3 Twinning - East of Highway 885 (Whitla) to Medicine Hat - Preliminary Design

---

## Preliminary Design Overview

### Objectives:

- Safety of the traveling public
- Highway is developed, designed, and constructed in an environmentally responsible manner that meets or exceeds the Provincial standards
- Risks are identified and properly allocated
- Provide effective and efficient highway infrastructure

### The following technical work is underway and will be completed in the preliminary design phase:

- Developed the Stage 1 expressway alignment
- Evaluated local road intersections and service road connections
- Environmental field investigations
- Communications with area landowners, businesses and roadway users
- Information sessions with stakeholders and the public

# Highway 3 Twinning - East of Highway 885 (Whitla) to Medicine Hat - Preliminary Design

---

## Information Session #1 September 2024 – What We Heard

Public information sessions were held on September 10, 2024 at the Medicine Hat College and on September 11, 2024 at the Seven Persons Community Hall. Display boards from the information sessions and a link to an online survey (open from September 3 to 20, 2024) were made available for those who wanted to learn more about the project and provide feedback online.

Below are key themes we heard:

- The majority of participants were supportive of the twinning of Highway 3 to improve safety and mobility along the highway.
- Many people wanted to minimize impacting land, in particular agricultural land for this project and thereby impacting the livelihood of agricultural operators and the community as a whole.
- Many were also worried about highway access points and connectivity due to the proposed access roads and closures to support the twinning of Highway 3. There were concerns with the lack of intersections provided on the open house display boards.

- Many were concerned about the impacts on local businesses if the highway were to bypass Seven Persons. Currently, some businesses in Seven Persons rely on travelers along the highway to make stops at their establishments.
- Several participants were concerned about the impacts to their properties and homes.
- Most people agreed that the highway twinning should follow the current Highway 3 alignment as much as possible. It was further explained that this would reduce impacts on landowners and communities and reduce project costs.

For more details about what we heard through engagement opportunities in September 2024, visit the project website to view the engagement summary.

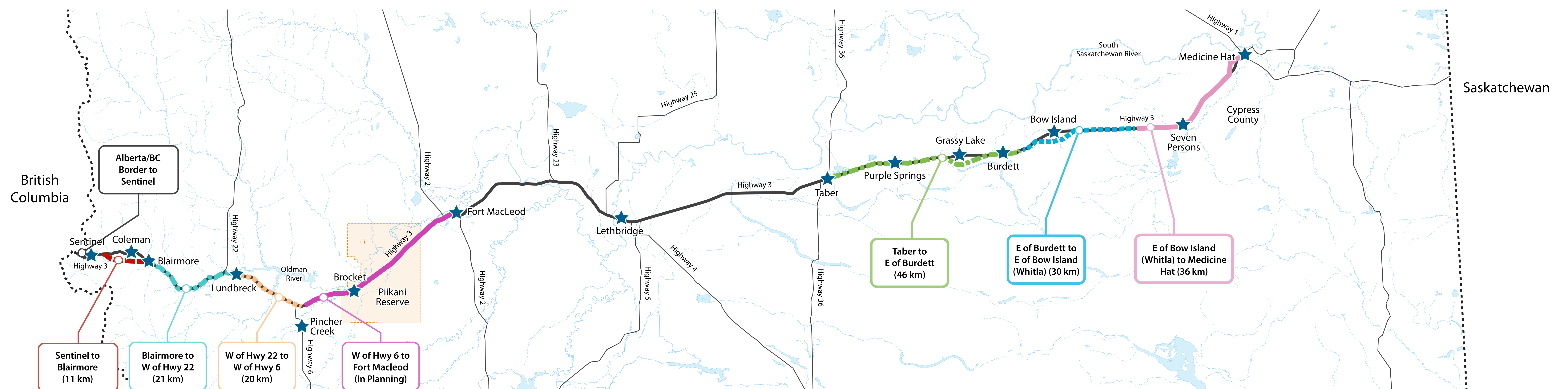


<https://www.alberta.ca/highway-3-twinning-east-of-highway-885-whitla-to-medicine-hat>

# Highway 3 Twinning - East of Highway 885 (Whitla) to Medicine Hat - Preliminary Design

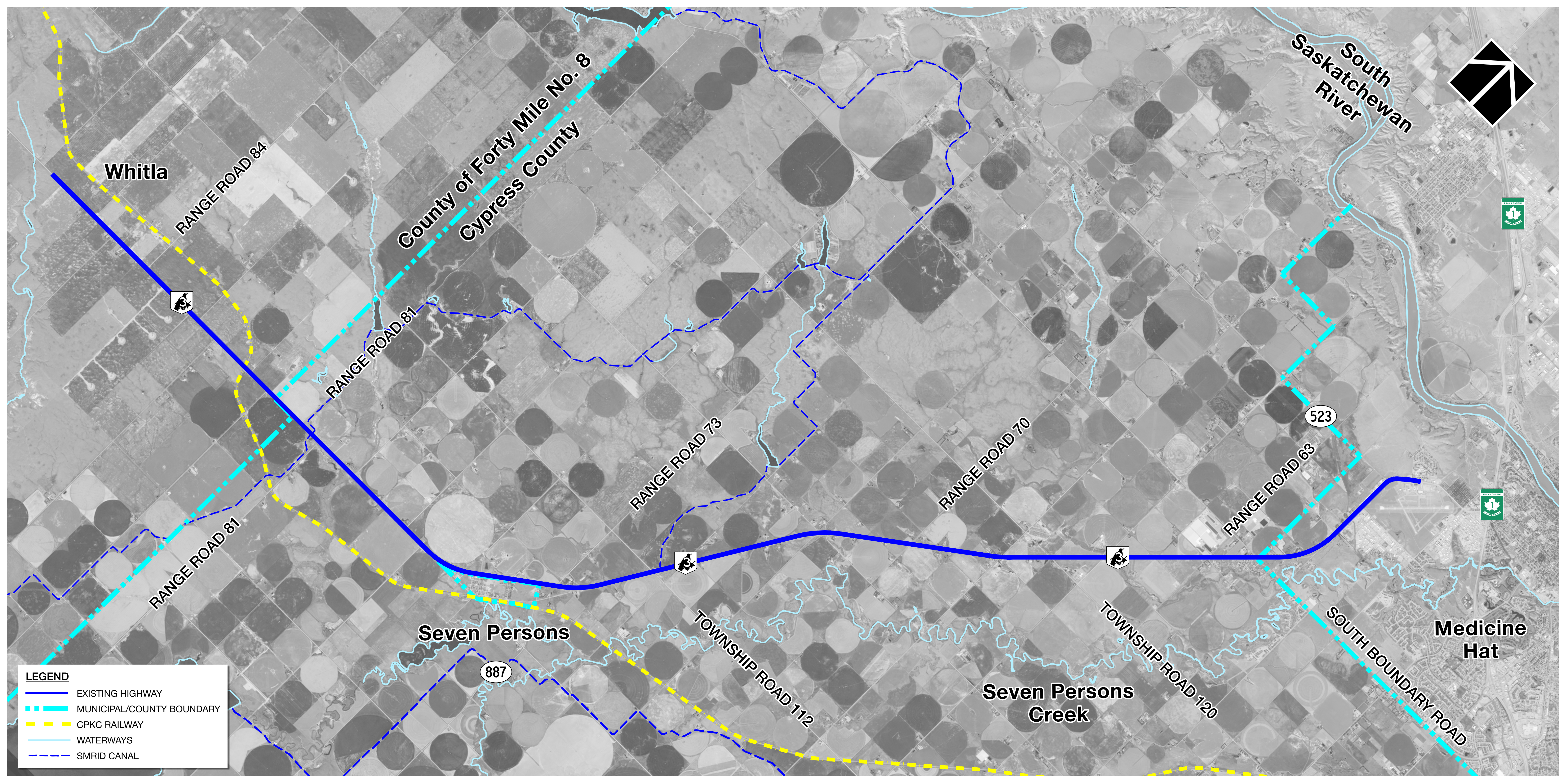
## Highway 3 Corridor

- Highway 3 is one of Canada's primary highways, moving people, goods and services inter-provincially and internationally. The corridor provides a primary connection between southern Alberta to provinces east and west and is one of only three continuous east-west routes through Alberta.
- Several segments along Highway 3 have been funded for detailed design and construction, as noted below.
- This project will build on previous planning studies on the Highway 3 corridor between Highway 885 (Whitla) and Medicine Hat.



# Highway 3 Twinning - East of Highway 885 (Whitla) to Medicine Hat - Preliminary Design

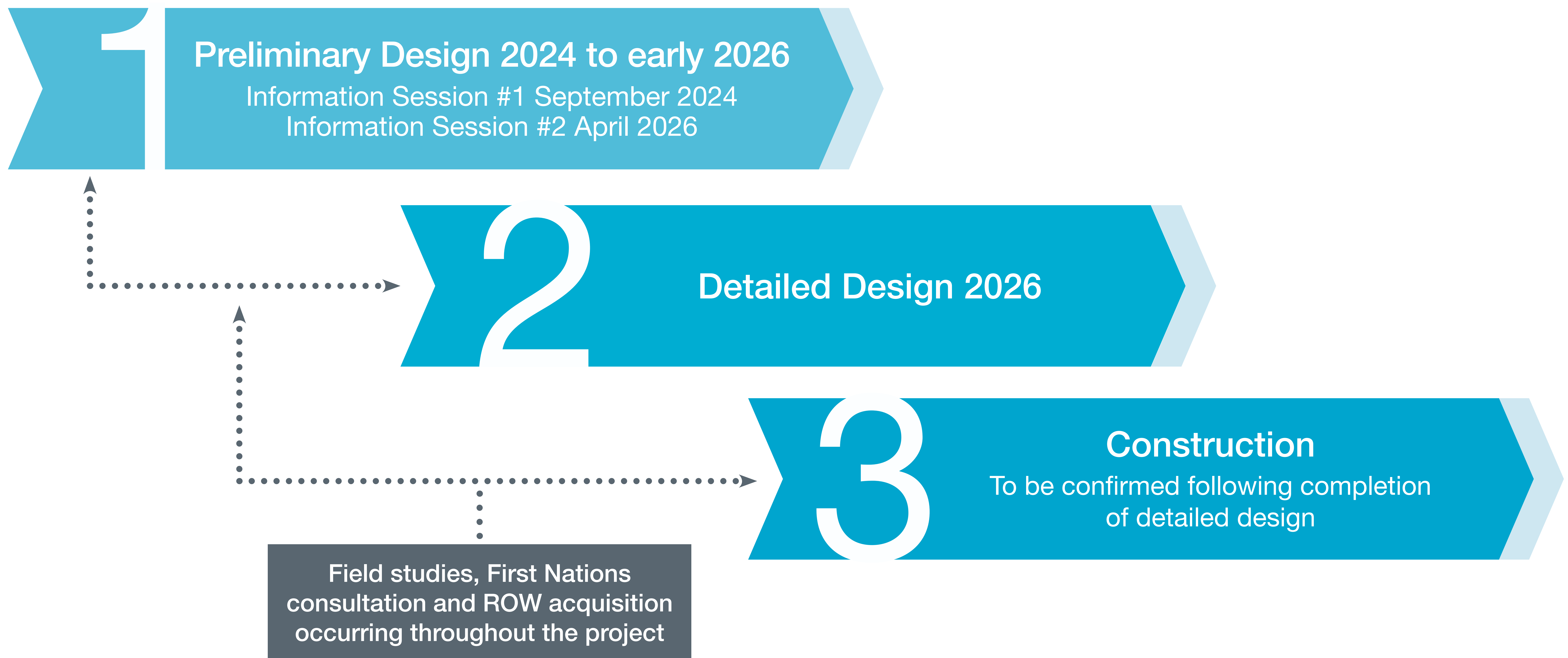
## Project Area Map and Existing Condition



# Highway 3 Twinning - East of Highway 885 (Whitla) to Medicine Hat - Preliminary Design

---

## Project Schedule



# Highway 3 Twinning - East of Highway 885 (Whitla) to Medicine Hat - Preliminary Design

---

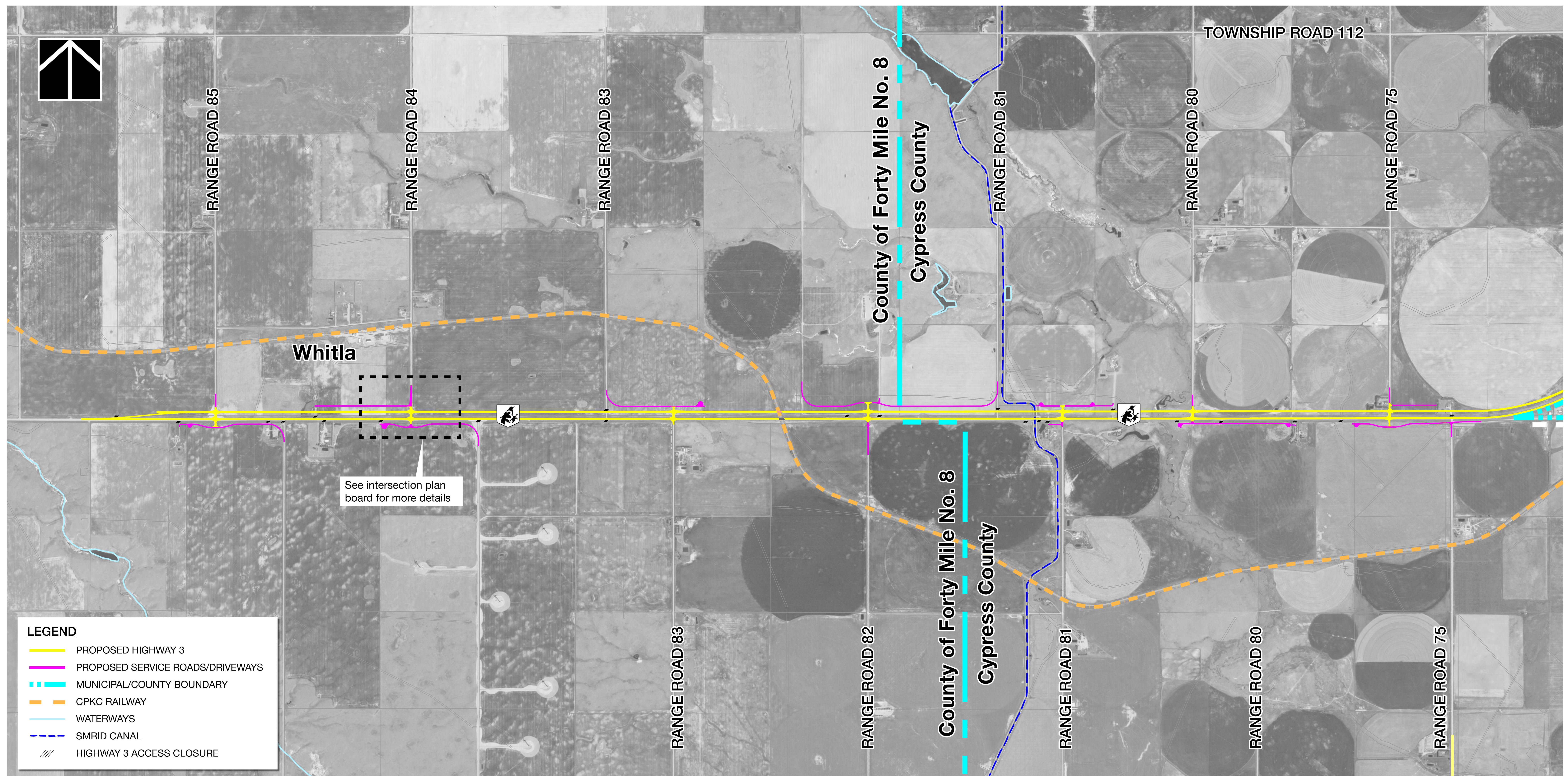
## Preliminary Design – What We've Been Doing

Following the information sessions hosted in fall 2024, our team has revised the conceptual design with goals to:

- Consider and implement feedback received from the fall 2024 information sessions and public engagement.
- Focus on Stage 1 expressway design requirements versus the ultimate freeway status.
- Maintain additional local road intersections to cut down on the overall length of service roads and land impacts while trying to maintain the 1.6 km minimum intersection spacing along Highway 3.
- Confirm the parallel twinning along Seven Persons is a viable option with consideration of future improvements.
- Confirm the preferred Highway 3 alignment that will tie into the City of Medicine Hat.
- Develop an updated design to include the preferred Highway 3 alignment/twinning configuration with access management changes to include more local road intersections.
- Further engage Cypress County, County of Forty Mile, and the City of Medicine Hat on the revised update.

# Highway 3 Twinning - East of Highway 885 (Whitla) to Medicine Hat - Preliminary Design

## Recommended Plan 1 – Whitla to Seven Persons



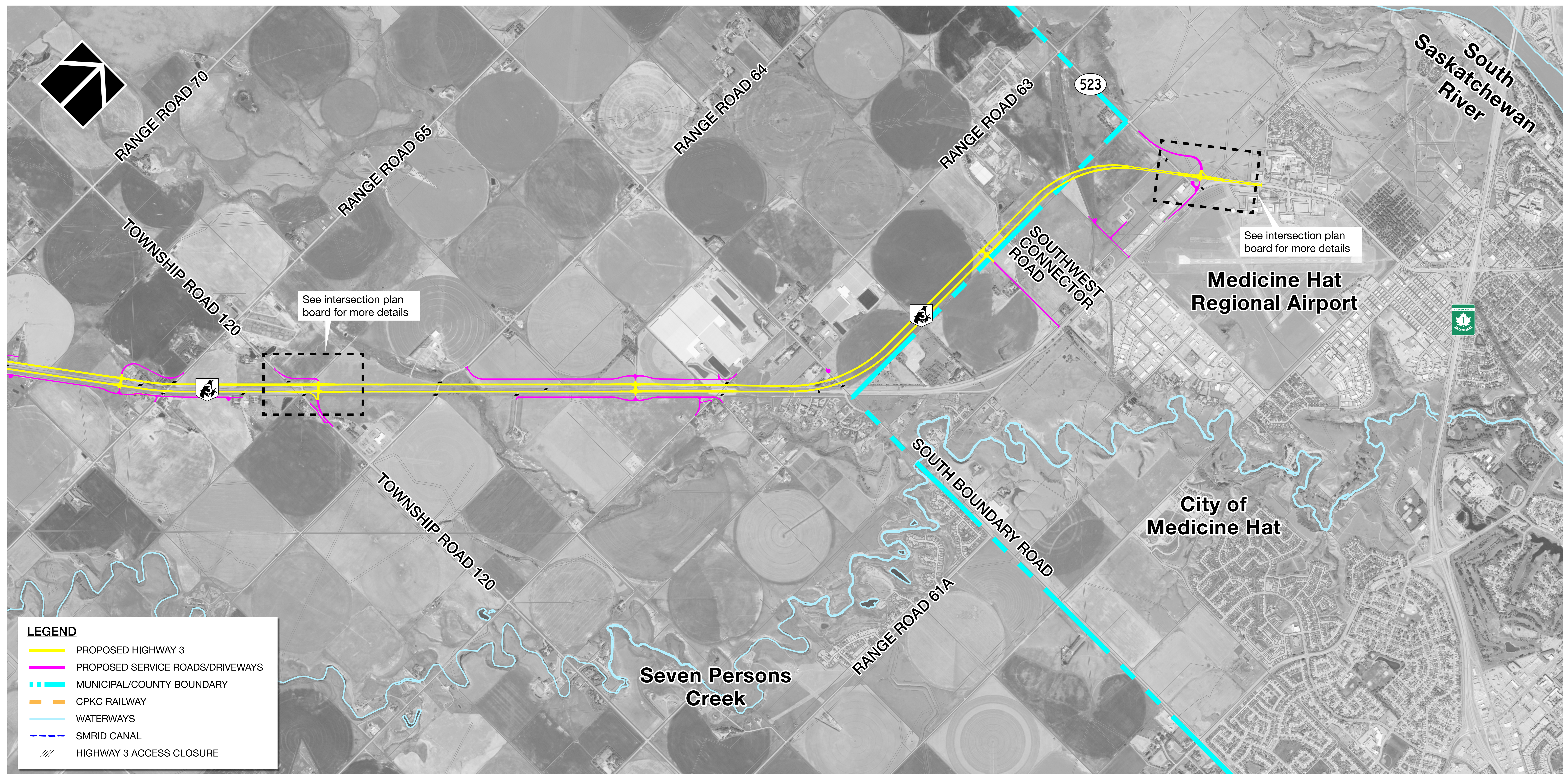
# Highway 3 Twinning - East of Highway 885 (Whitla) to Medicine Hat - Preliminary Design

## Recommended Plan 2 – Seven Persons to Range Road 70



# Highway 3 Twinning - East of Highway 885 (Whitla) to Medicine Hat - Preliminary Design

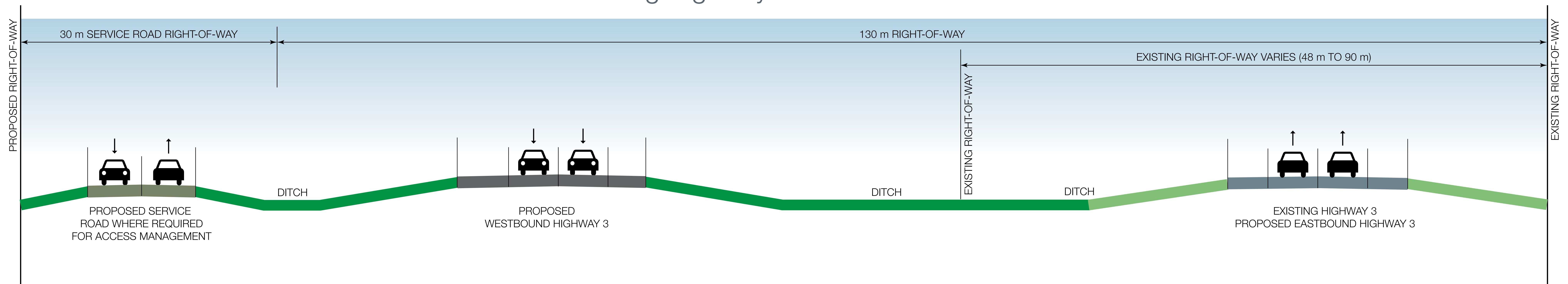
## Recommended Plan 3 – Range Road 70 to Medicine Hat



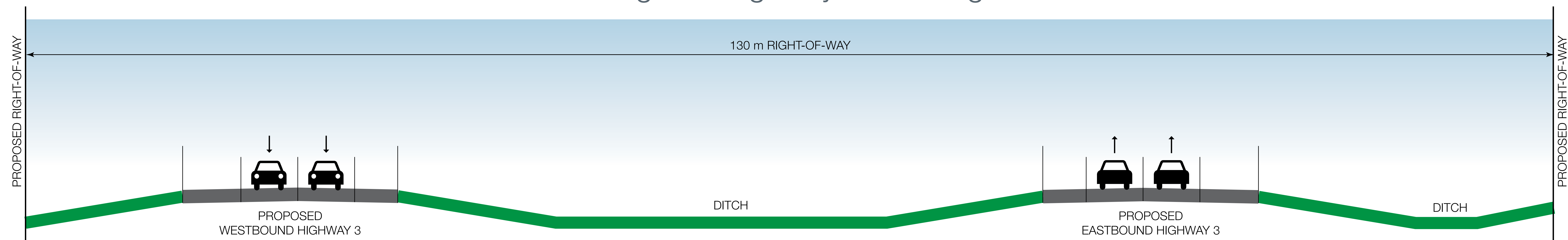
# Highway 3 Twinning - East of Highway 885 (Whitla) to Medicine Hat - Preliminary Design

## Typical Cross Sections

Twinning Highway 3:16 with service road



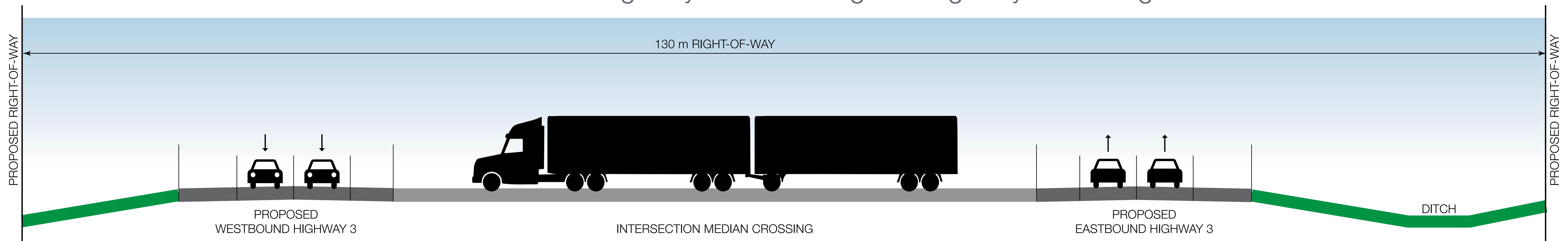
Twinning and Highway 3:17 realignment



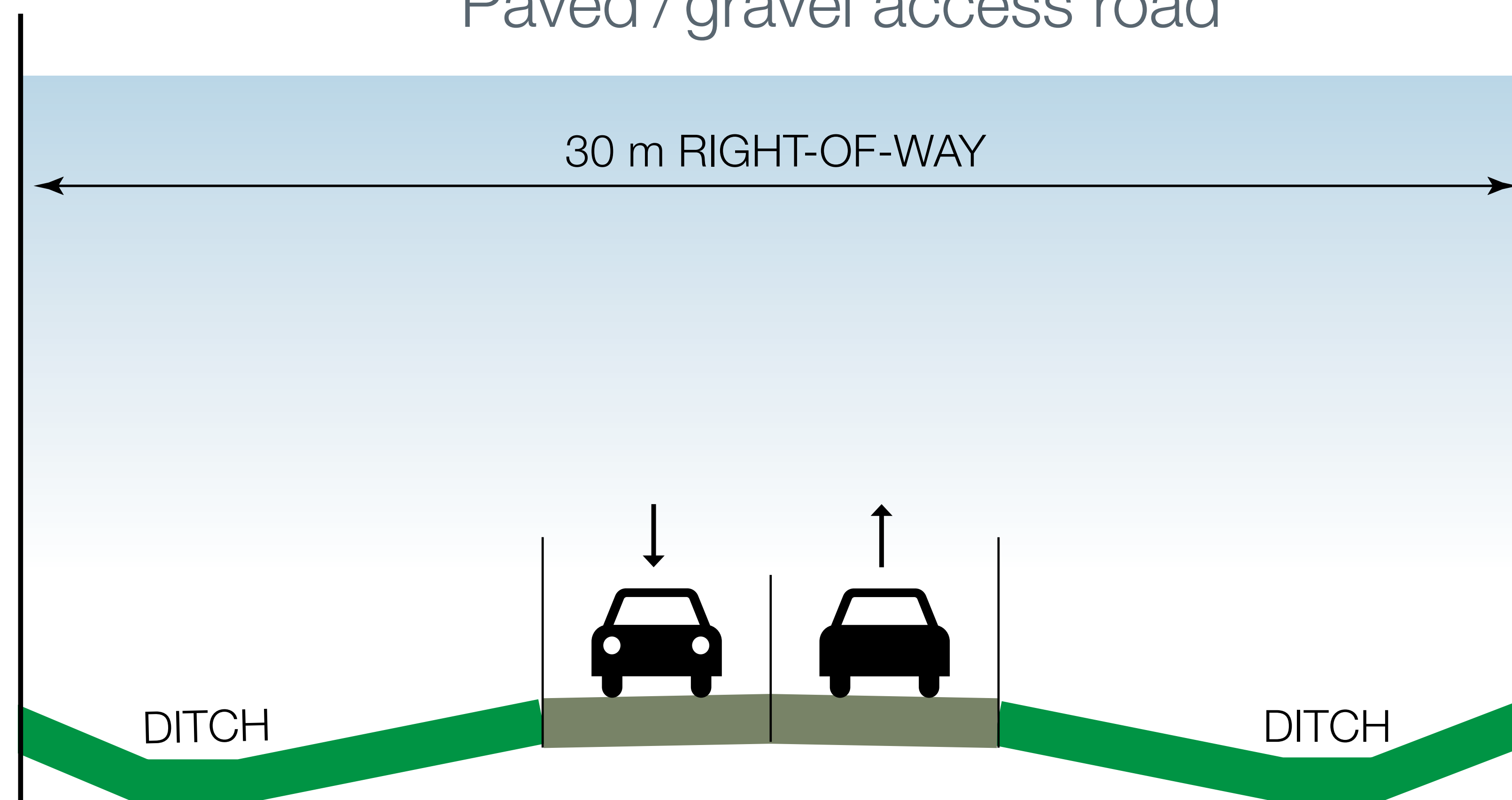
# Highway 3 Twinning - East of Highway 885 (Whitla) to Medicine Hat - Preliminary Design

## Typical Cross Sections

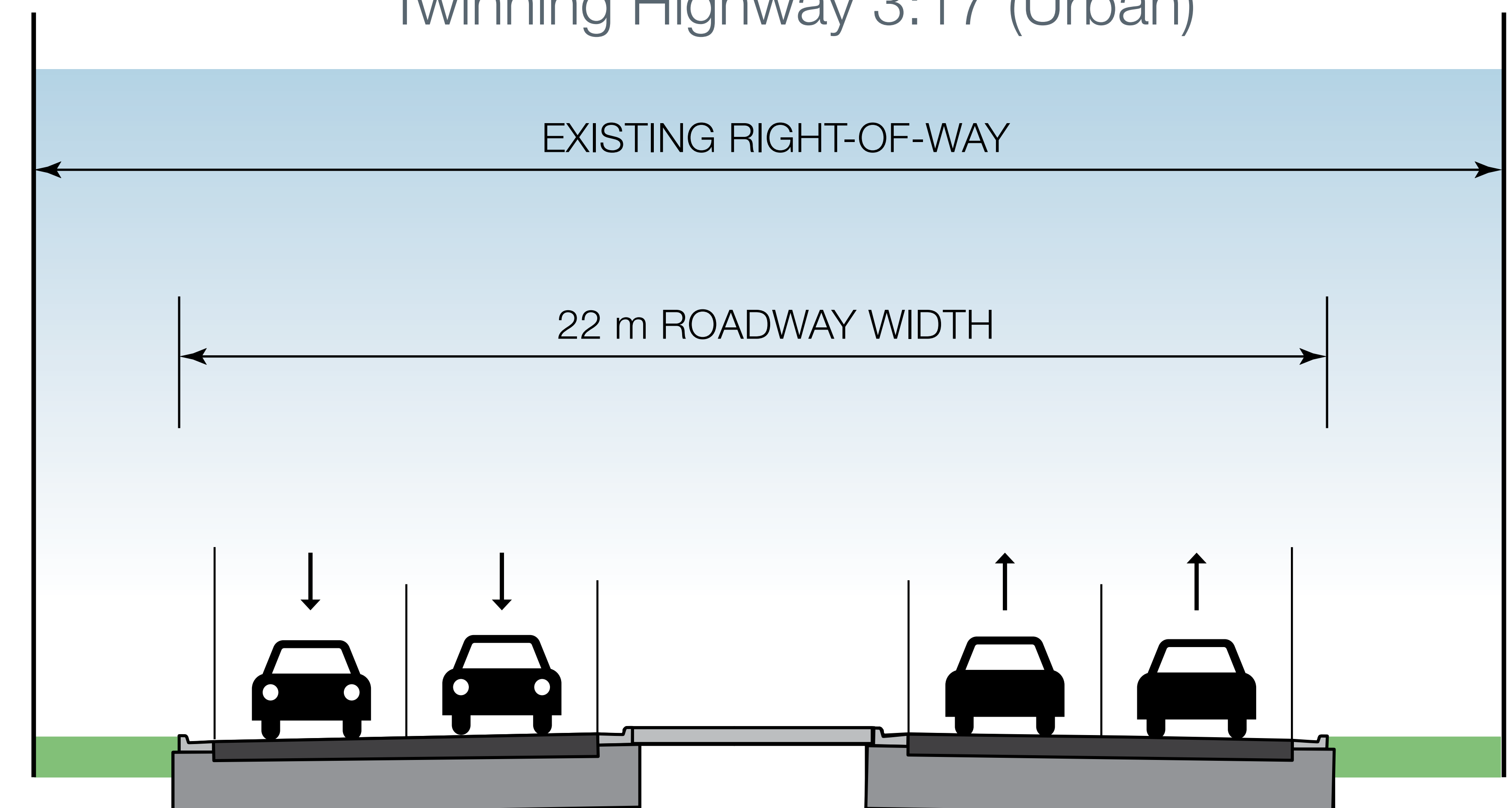
Intersection size for Highway 3:16 Twinning and Highway 3:17 realignment



Paved / gravel access road

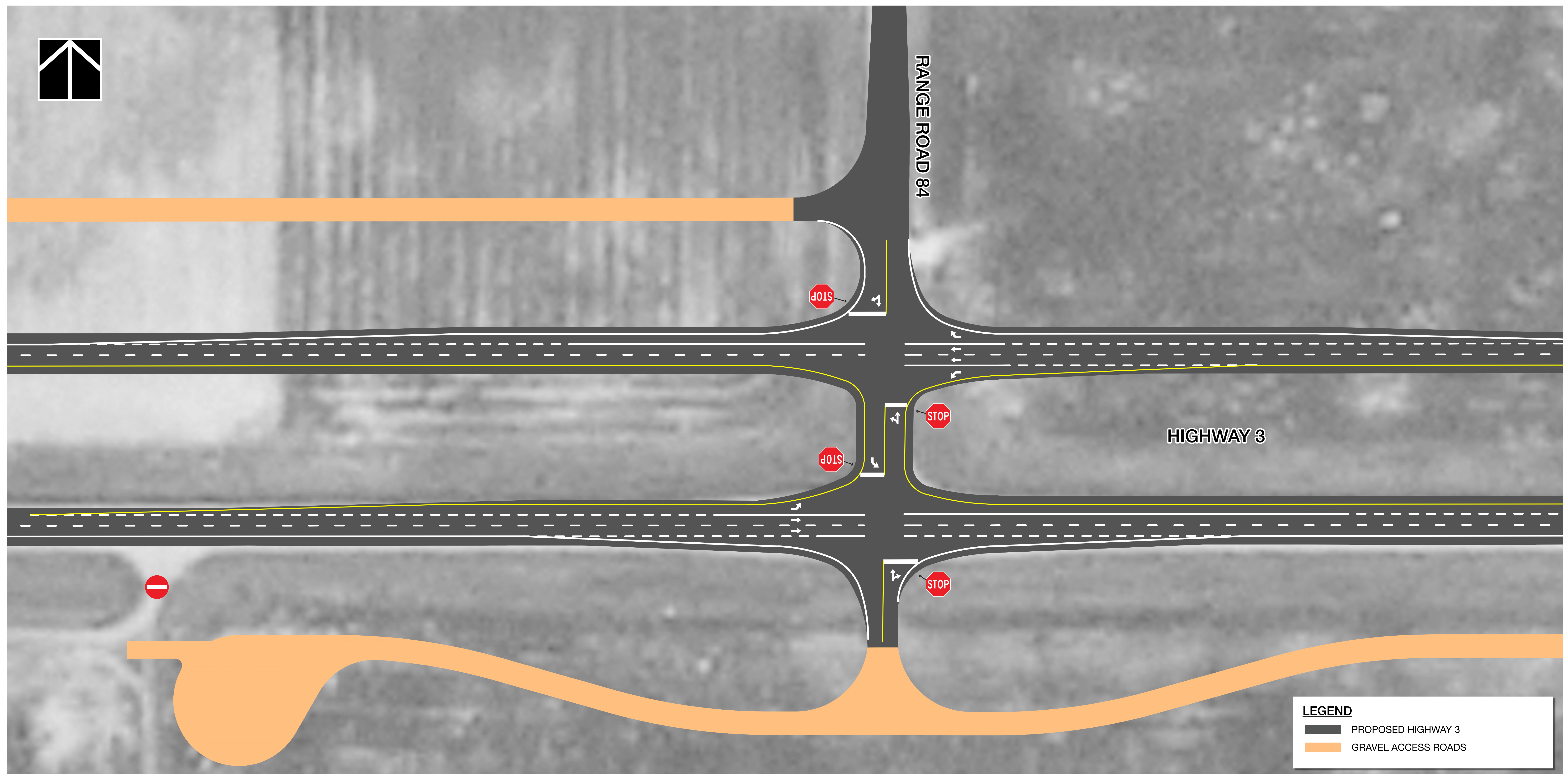


Twinning Highway 3:17 (Urban)



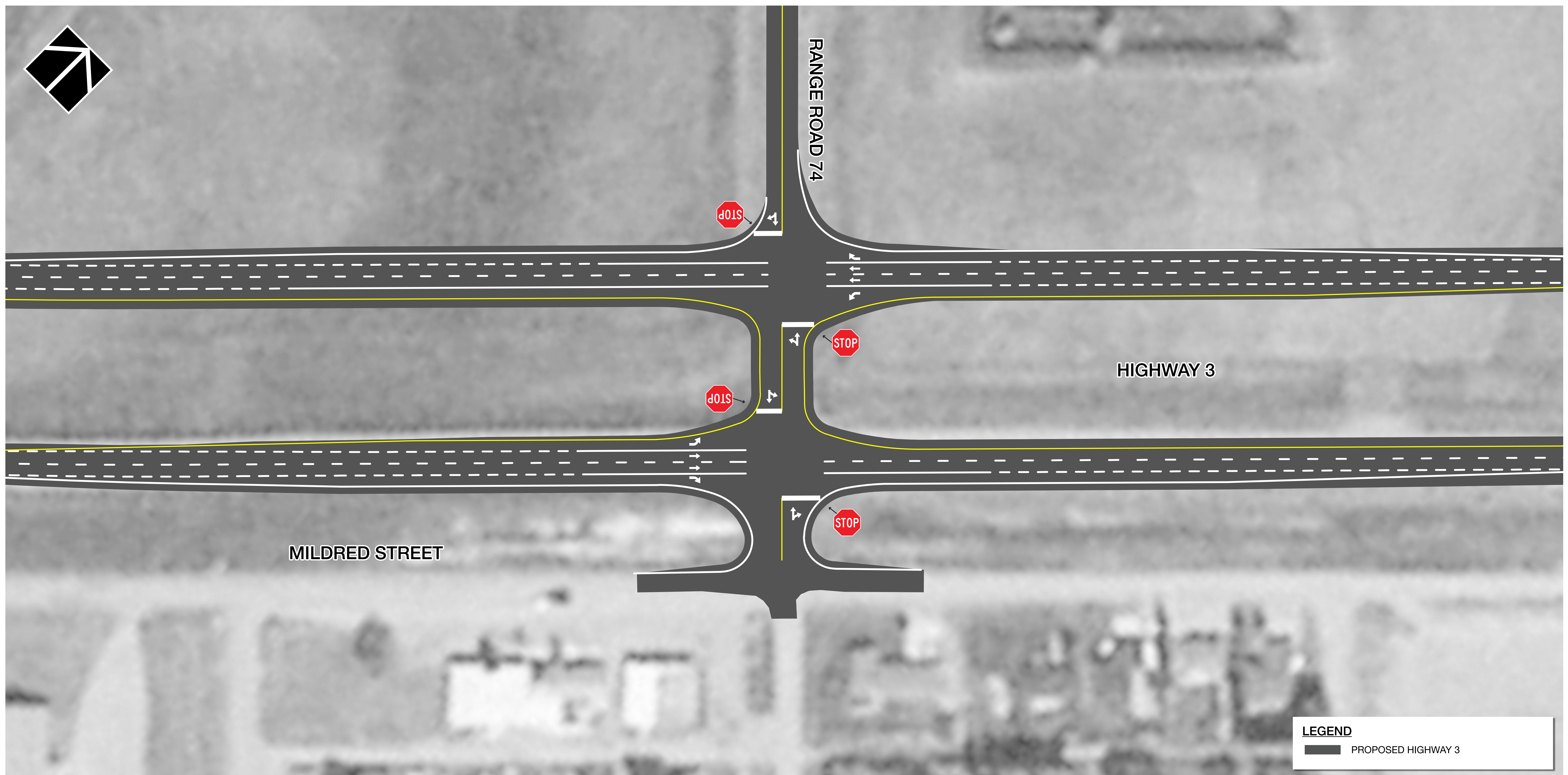
# Highway 3 Twinning - East of Highway 885 (Whitla) to Medicine Hat - Preliminary Design

## Intersection Plans – Range Road 84 (North)



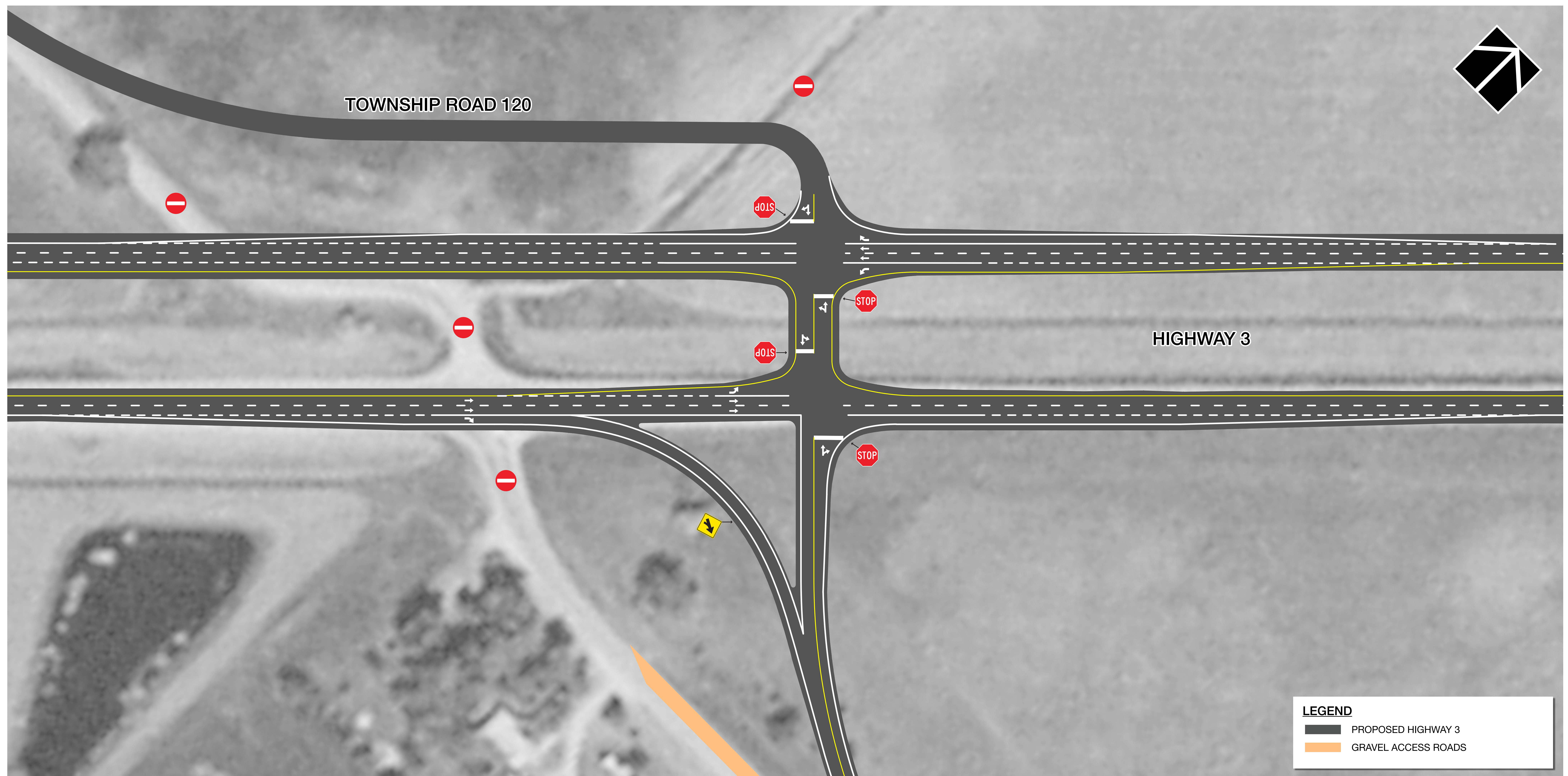
# Highway 3 Twinning - East of Highway 885 (Whitla) to Medicine Hat - Preliminary Design

## Intersection Plans – Range Road 74 to 2 Avenue at Seven Persons



# Highway 3 Twinning - East of Highway 885 (Whitla) to Medicine Hat - Preliminary Design

## Intersection Plans – Township Road 120



# Highway 3 Twinning - East of Highway 885 (Whitla) to Medicine Hat - Preliminary Design

## Intersection Plans – Highway 523



# Highway 3 Twinning - East of Highway 885 (Whitla) to Medicine Hat - Preliminary Design

---

## Share your comments!

- Do you have feedback to share about the recommended plans for twinning of Highway 3 from Highway 885 (Whitla) to Medicine Hat?
- If so, please share your feedback with the project team by completing a paper copy or online version of the comment form. The display boards and survey are available on the website (see link and QR below).

## What's next?

- Feedback received from stakeholders and the public in April / May 2026 will be used by the project team, along with technical and financial considerations, to finalize the design.
- Preliminary design will be completed in early 2026.
- Detailed design will be completed in late 2026.
- Construction schedule to be confirmed following the completion of detailed design.



For more information and to stay up to date on the project, visit:

<https://www.alberta.ca/highway-3-twinning-east-of-highway-885-whitla-to-medicine-hat>