

115°28'W 115°24'W 115°20'W 115°16'W 115°12'W 115°8'W 115°4'W

Alberta

Public Map

SWF- 076

June 07, 2025

0 0.5 1 2 3 4 5
Kilometers

1:150,000

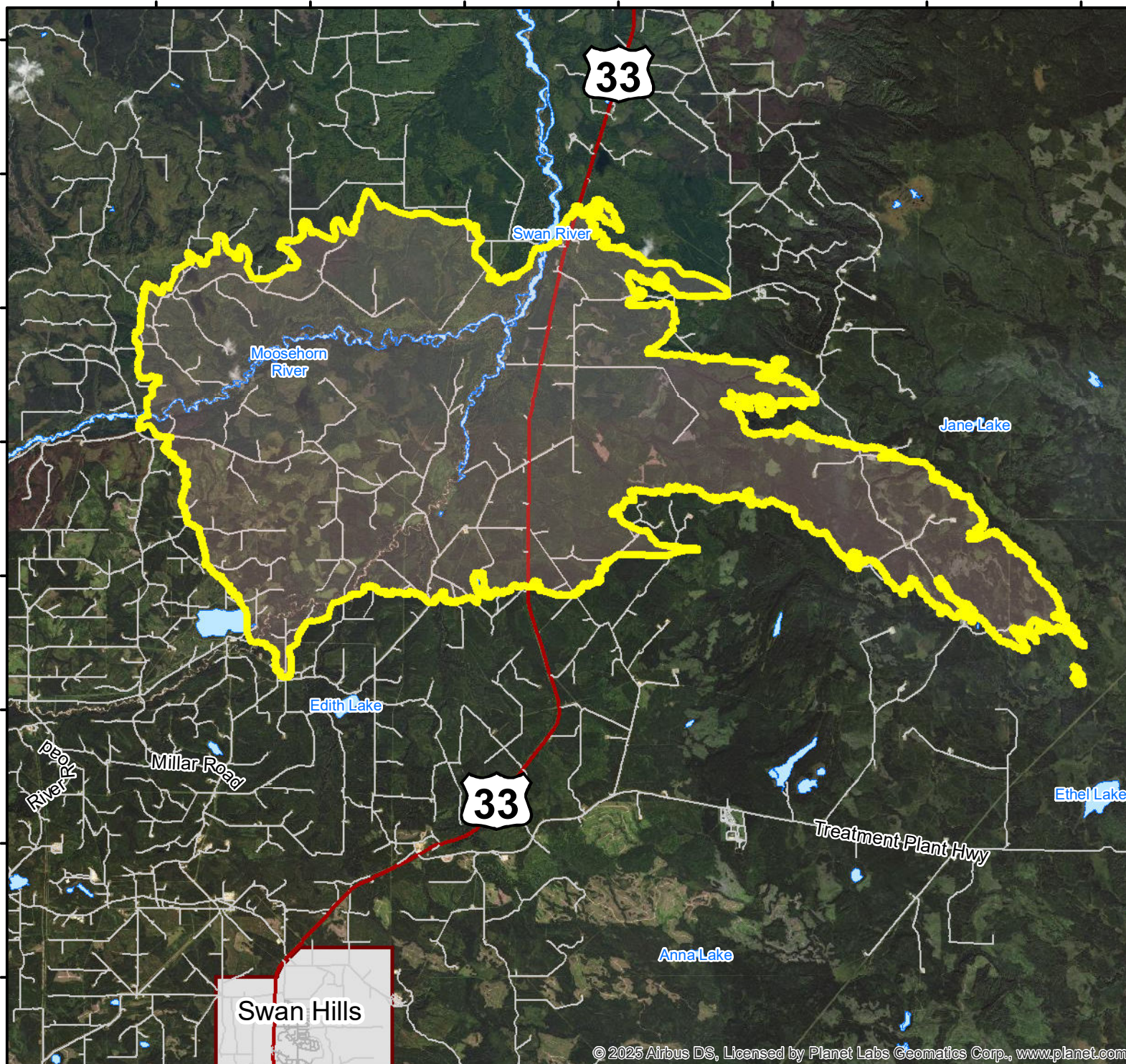
Legend

- Status: Being Held
- Fire Polygon
- Primary Road
- Municipal/City Road
- Other Road
- Town
- Water bodies

DISCLAIMER:

The wildfire perimeter map is an estimate based on measurements such as GPS, aerial scanning and satellite imagery. This estimated perimeter can change as more accurate measurements become available. Areas within the fire perimeter may not have been affected by wildfire.

Prepared by Wildfire Incident Command GIS Staff
(c) Government of Alberta 2025
Base Data Provided by the Government of Alberta
Under the Alberta Open Government Licence
All Rights Reserved
Information depicted is subject to change
The Government of Alberta assumes no
responsibility for discrepancies at time of use



© 2025 Airbus DS, Licensed by Planet Labs Geomatics Corp., www.planet.com

Plot Path: Z:\SWF-076-2025\Projects\Additional_Maps\Public\SWF076_Public_85x11_20250607.PDF

Last Update: June 4, 2025 6:18:50 PM; Exported: June 7, 2025 7:07:20 AM