
Proposed Trail Experience Zones

Wapiti Recreation and Trail Management Plan



This publication is issued under the Open Government Licence – Alberta
(<http://open.alberta.ca/licence>)

Please note that the terms of this licence do not apply to any third-party materials included in this publication.

Proposed Trail Experience Zones | Forestry and Parks

©2024 Government of Alberta | Published: April 2024



Contents

Introduction.....	4
Proposed Trail Experience Zones	4
Proposed Access/Staging Zone.....	6
Proposed Big Mountain West Zone	7
Proposed Conservation Area	9
Proposed Dunes Multiple Use Zone	11
Proposed East Multiple Use Zone	13
Proposed Evergreen Recreational Lease Zone	15
Proposed Facility-Based/Commercial Zone	17
Proposed Mountain Bike Recreational Lease Zone	19
Proposed Noise Buffer Zone	21
Proposed North OHV/ORM Skills Development Zone	22
Proposed O'Brien Recreational Zone	24
Proposed South OHV/ORM Recreational Skills Lease Zone	26
Proposed Wapiti East Zone	28
Proposed West Multiple Use Zone	30
Proposed Winter Recreational Lease Zone	32
Appendix A: Project Scope.....	34

Introduction

We are gathering feedback to inform the development of a Wapiti Recreation and Trail Management Plan that will provide long-term direction for planning, management, and operational and capital decisions for improving outdoor recreational opportunities along the Wapiti River Valley. In the first phase of engagement, your perspectives on proposed Trail Experience Zones and specific trails in the plan area will help us develop a plan to establish designated trails for specific uses to reduce conflicts and create opportunities for safe and enjoyable recreation experiences.

This document describes the proposed Trail Experience Zones for the Wapiti planning area. It is intended to support your participation in the engagement. A short description of the proposed Trail Experience Zones and overall map are provided, followed by individual sections dedicated to each proposed Trail Experience Zone that contain details about their intended use and rationale for development. More information about the scope of the Wapiti planning area is contained in Appendix A.

Proposed Trail Experience Zones

The trail experience zone concept has been used previously in Alberta. It is a thoughtful approach to managing trails that recognizes that not all trail activities are compatible. By optimizing different zones for specific activities, the aim is to create a sustainable network of trails that caters to a diverse range of recreational users while minimizing conflict.

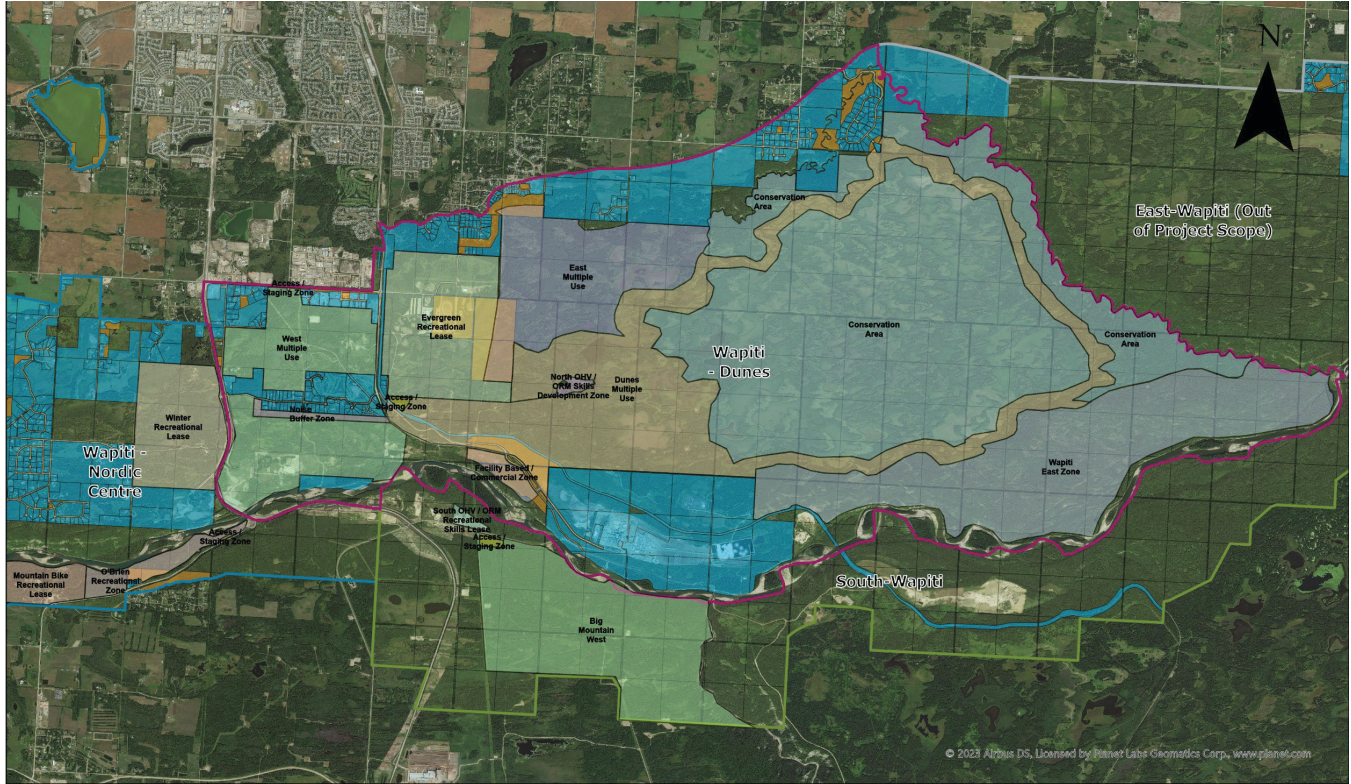
The proposed Trail Experience Zones were developed with consideration for:

- current trail activities occurring in the area,
- capability of the terrain to support different land uses,
- adjacent land uses,
- known environmental historic resources, and
- land uses and existing land management direction.

The Trail Experience Zones are not considered final for the purposes of the Wapiti Recreation and Trail Management Plan. The proposed trail experience zones are the subject of phase 1 of engagement towards the development of the draft plan, and thus are open to modification based on feedback received. Alberta Forestry and Parks requires feedback from Indigenous communities and organizations, stakeholders, and the public on the proposed Trail Experience Zones to ensure that they will create a sustainable and enjoyable trail network that meets the needs of all users.

The proposed Trail Experience Zones provide management direction for trail-based recreation on Crown lands only, and do not apply to any other land uses in the Wapiti planning area (Appendix A).

Map of Proposed Trail Experience Zones



Legend

Crown Classification

- Municipal
- Private
- Provincial

Wapiti Boundary

- East-Wapiti (Out of Project Scope)
- South-Wapiti
- Wapiti - Dunes
- Wapiti - Nordic Centre

Trail Experience Zone

Click below to jump to page

- | | |
|-------------------------|--|
| Page 6 | Access / Staging Zone |
| Page 7 | Big Mountain West |
| Page 9 | Conservation Area |
| Page 11 | Dunes Multiple Use |
| Page 13 | East Multiple Use |
| Page 15 | Evergreen Recreational Lease |
| Page 17 | Facility Based / Commercial Zone |
| Page 19 | Mountain Bike Recreational Lease |
| Page 21 | Noise Buffer Zone |
| Page 22 | North OHV / ORM Skills Development Zone |
| Page 24 | O'Brien Recreational Zone |
| Page 26 | South OHV / ORM Recreational Skills Lease |
| Page 28 | Wapiti East Zone |
| Page 30 | West Multiple Use |
| Page 32 | Winter Recreational Lease |

Proposed Access/Staging Zone

Description

These three zone areas, included in Big Mountain West, Dunes Multiple Use, and O'Brien Recreational Zones, would provide a welcome gateway to start and end Wapiti trail outings and contain informative trail mapping and signage. They would be a place to prepare and rest before and after outings.

Proposed Intent and Uses

- Parking for trucks with trailers
- Loading and unloading OHVs/ORMs (Off Highway Vehicles/Off Road Motorcycles)



Key Findings

Conflicts	Environmental Concerns	Potential Trail Amenities
<ul style="list-style-type: none"> • Users of different activity types may not like sharing staging areas and amenities • Disposition holders and trail managers may have to agree on crossing requirements or access requirements 	<ul style="list-style-type: none"> • Development • Wildlife attractants • Erosion • Litter 	<ul style="list-style-type: none"> • Vault toilet(s) • Wildlife proof garbage dumpsters • Loading ramps • Hitching rails • Corrals • Manure disposal

Rationale for Zone

- Based on input from stakeholders
- Observed current uses
- Terrain in the area

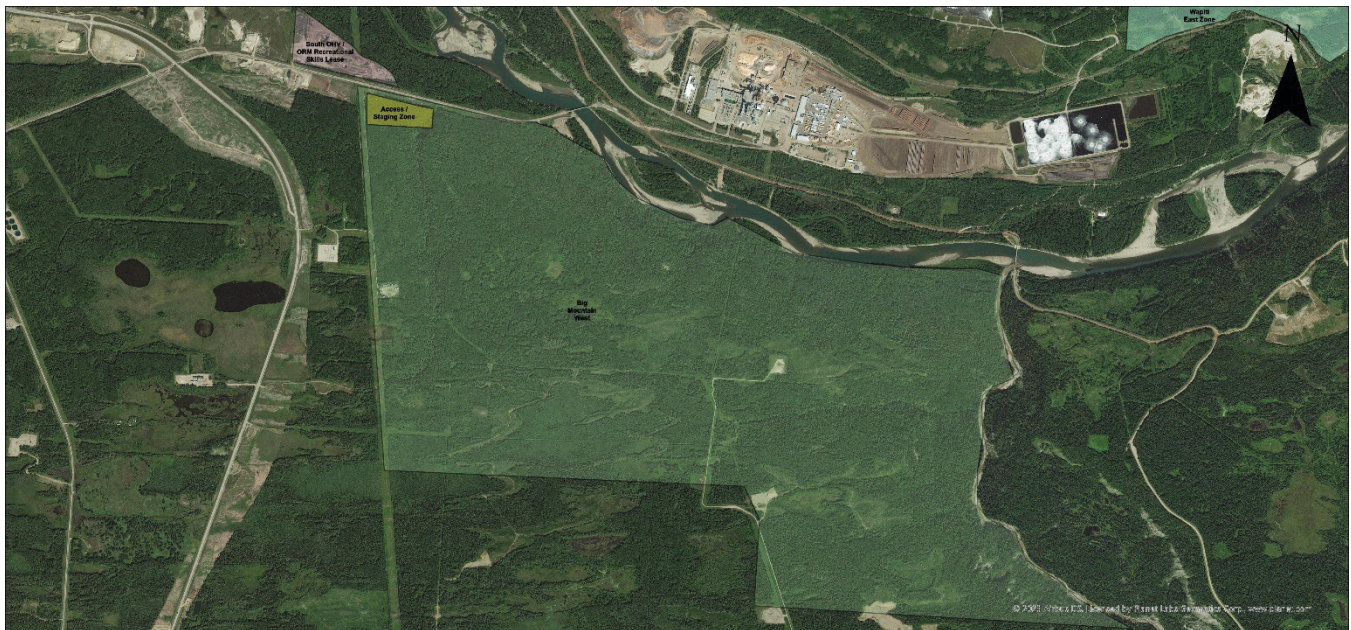
Proposed Big Mountain West Zone

Description

This zone provides an intensive stacked loop of natural surface ORM (Off-Road Motorcycle) networks with intensively stacked loop network with natural surfaced single track ORM trails. The area has a mid country setting, with flow and technical features that are green* to black diamond*** difficulty.

Proposed Intent and Uses

- Natural and constructed technical trail features may occur including skill filters with optional lines
- Largest portion is blue** difficulty with some black diamond*** trails
- Basic wayfinding, potential for education signage at pullout or viewpoints
- Connections south to the Big Mountain OHV and snowmobile trail network may be an option
- If required, option for a single OHV <1.83 m trail to connect mixed use zones
- No OHV use is advised by County
- If required, option for a single non-motorized optimized trail



Big Mountain West

Legend

Trail Experience Zones

- Access / Staging Zone
- Big Mountain West
- South OHV / ORM Recreational Skills Lease
- Wapiti East Zone



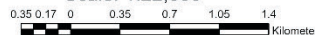
© 2023 Government of Alberta
 Coordinate System: NAD83 10TM AEP Forest
 Prepared By: Capital Planning
 Date of Completion: August 15, 2023

Alberta Environment and Parks

Where applicable: Base data provided by the Government of Alberta under the Alberta Open Data License (2023).

The Minister and the Crown provides this information without warranty or representation as to any matter including but not limited to whether the data/information is correct, accurate, or free from error, defect, danger, or hazard and whether it is otherwise useful or suitable for any use the user may make of it.

Scale: 1:22,000



*Green (Circle) – Safe for beginner riders, these trails/rides will typically be on forest service roads and trails that are flat and do not have off-camber slopes, bumps, ditches, or obstacles. A beginner rider should be in their comfort zone on all green trails.

**Blue (Square) – Safe for intermediate level experience riders, trails/rides may have greater slopes, ditches, and obstacles. A beginner rider will be challenged moderately by sections of blue trails, intermediate riders will be comfortable.

***Black (Diamond) – Meant for experienced riders, these trails/rides will have sections that have steep slopes, larger ditches, or obstacles to traverse. Intermediate riders will be challenged by sections of black trails, experienced riders comfortable with most.

Proposed Big Mountain West Zone

Key Findings

Conflicts	Environmental Concerns	Potential Trail Amenities
<ul style="list-style-type: none">• Trail runners and hikers also use this area• Steep portions with safety/erosion concerns• People crossing Canfor Bridge• Close to River Rats Recreational Lease and parking congestion• Disposition holders and trail managers may have to agree on crossing requirements or access requirements	<ul style="list-style-type: none">• Erosion channels and gullies• Crossing through wet areas• Soil compaction• Garbage complaints in area	<ul style="list-style-type: none">• Amenities limited to viewpoints and pullouts• Staging area• Single rest area halfway• Picnic tables• Pit toilet

Rationale for Zone

- Based on input from stakeholders
- Observed current uses
- Terrain in the area
- Known environmental sensitivities
- Bear River Wapiti Local Integrated Resource Plan
- Wapiti Sand Dunes Land Use Zones

Proposed Conservation Area

Description

Intent is to avoid trail development within this zone to protect relatively intact wildlife habitats, wetlands, and dune features from further fragmentation; to maintain habitat connectivity and wildlife movement corridors; and to limit conflict with and disturbance of adjacent landowners or users.

Proposed Intent and Uses

- Conserve environmental values



Conservation Area

Legend

Trail Experience Zones

- Conservation Area
- Dunes Multiple Use
- East Multiple Use
- Wapiti East Zone



© 2023 Government of Alberta
 Coordinate System: NAD83 10TM AEP Forest
 Prepared By: Central Planning
 Date of Completion: August 15, 2023

Alberta Environment and Parks

Where applicable: Base data provided by the Government of Alberta under the Alberta Open Data License (2023).

The Minister and the Crown provides this information without warranty or representation as to any matter including but not limited to whether the data information is correct, accurate, or free from error, defect, danger, or hazard and whether it is otherwise useful or suitable for any use the user may make of it.

Scale: 1:35,000

0.2 0.4 0.6 0.8



Kilometers

Proposed Conservation Area

Key Findings

Conflicts	Environmental Concerns	Potential Trail Amenities
<ul style="list-style-type: none">• Aspen and Taylor access through neighbourhoods (residents concerned)• People get lost and knock on doors (safety)• Parking and blocking roadways	<ul style="list-style-type: none">• Wetland crossings exist and need mitigation• Wildlife corridor fragmentation• Noise pollution• Litter• Erosion into wetlands• Soil compaction• Down wood removal and vegetation damage• Fire risk• Illegal crossing of Bear Creek occurs	<ul style="list-style-type: none">• Minimal wayfinding might be necessary• Staging area might be needed

Rationale for Zone

- Based on known environmental sensitivities feedback
- Based on input from stakeholders
- Observed current use
- Terrain in the area
- Bear River Wapiti Local Integrated Resource Plan
- Wapiti Sand Dunes Land Use Zones

Proposed Dunes Multiple Use Zone

Description

This zone provides a front to back country experience that is optimized for OHV (Off-Highway Vehicle), ORM (Off-Road Motorcycle), and snowmobiles. A single access corridor, greater than 1.83 m may be maintained to enable on highway vehicle access (firewood gathering). Non-motorized use will be permitted, but users can expect encounters with OHV, ORM and associated hazards and noise.

Trails will be designed and maintained to provide mix of green* and blue** technical levels of difficulty with increased blue** as the trails progress to the back country. This zone provides access to OHV/ORM skills area and includes Aspen Loop.

No illegal crossing on Bear Creek.

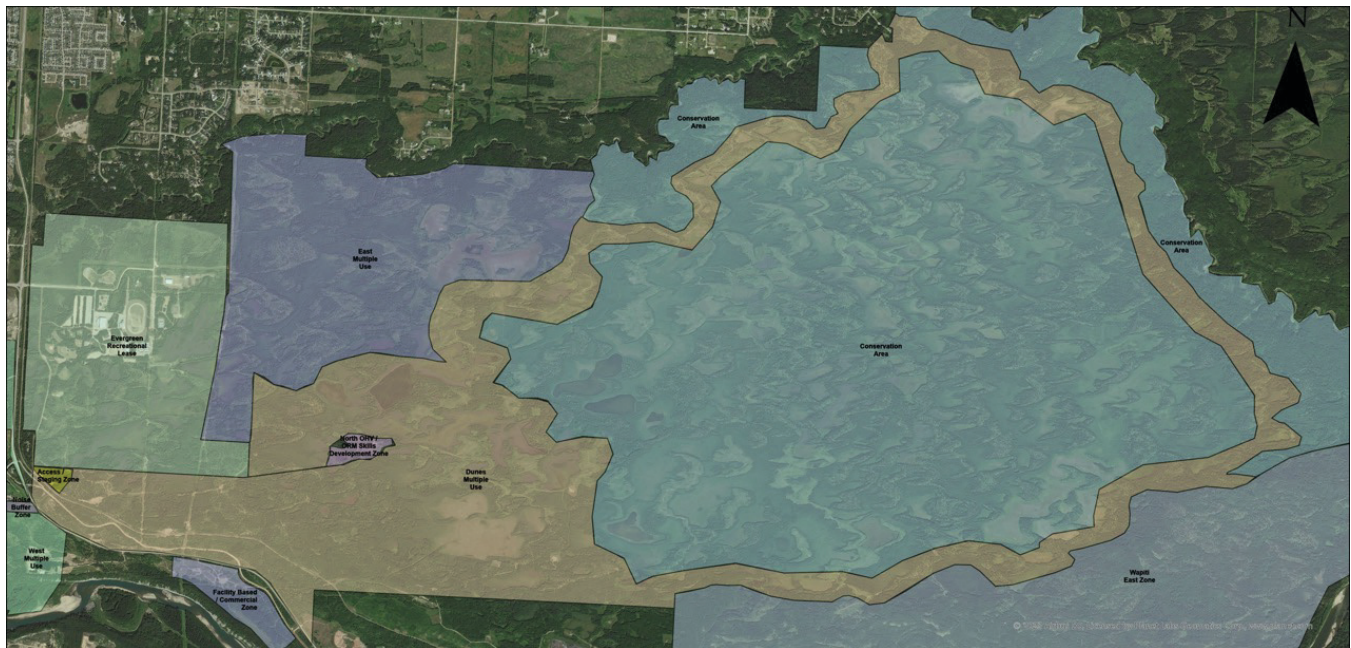
Proposed Intent and Uses

Front Country:

- Front country experience OHV/ORM trails systems
- High density stacked loop
- Green* and blue** in difficulty
- Frequent on-trail wayfinding, signage, and support for visitor navigation, education, and compliance

Mid to Back Country:

- Back country experience OHV/ORM trails systems
- Long distance natural surface trails
- Basic wayfinding and signage
- Mostly blue** in difficulty, ungroomed in the winter
- Potential for a single rest area halfway, picnic tables, firepits, warming shelter, pit toilet.
- No illegal crossing of Bear Creek



Dunes Multiple Use

Legend

- | | |
|-------------------------------|---|
| Trail Experience Zones | Facility Based / Commercial Zone |
| Access / Staging Zone | Noise Buffer Zone |
| Conservation Area | North OHV / ORM Skills Development Zone |
| Dunes Multiple Use | Wapiti East Zone |
| East Multiple Use | Wapiti West Zone |
| Evergreen Recreational Lease | |



© 2023 Government of Alberta
 Coordinate System: NAD83 10TM AEP Forest
 Prepared By: Central Planning
 Date of Completion: August 15, 2023
 Alberta Environment and Parks
 Where applicable: Base data provided by the Government of Alberta under the Alberta Open Data License (2023).
 The Minister and the Crown provides this information without warranty or representation as to any matter including but not limited to whether the data/information is correct, accurate, or free from error, defect, danger, or hazard and whether it is otherwise useful or suitable for any use the user may make of it.

Scale: 1:35,000
 0 0.2 0.4 0.6 0.8
 Kilometers

Proposed Dunes Multiple Use Zone

Conflicts	Environmental Concerns	Potential Trail Amenities
<p>Front Country:</p> <ul style="list-style-type: none"> • CN Rail crossings pose a safety risk to trains and OHV users • High pressure ATCO line is being crossed repeatedly • Disposition holders and trail managers may have to agree on crossing requirements or access requirements <p>Mid to Back Country:</p> <ul style="list-style-type: none"> • Deep ruts make travel difficult and muddy • People accessing these areas from residential areas (Aspen and Taylor Subdivisions) • Private property trespass • Illegal crossings of Bear Creek • Disposition holders and trail managers may have to agree on crossing requirements or access requirements 	<ul style="list-style-type: none"> • Crossings through wetlands • Illegal crossings of Bear Creek • Exhaust noise • Fire risk • Trumpeter swan buffers • Soil compaction • Litter 	<p>Front Country:</p> <ul style="list-style-type: none"> • Staging Area in progress • Viewpoints, • Rest areas with universally accessible picnic tables • Warming shelter and pit toilets <p>Mid to Back Country:</p> <ul style="list-style-type: none"> • Potential for a single rest area halfway with picnic tables • Warming shelter • Pit toilets

Rationale for Zone

- Based on feedback from stakeholders
- Observed current uses
- Terrain in the area
- Known environmental sensitivities
- Bear River Wapiti Local Integrated Resource Plan
- Wapiti Sand Dunes Land Use Zones

*Green (Circle) – Safe for beginner riders, these trails/rides will typically be on forest service roads and trails that are flat and do not have off-camber slopes, bumps, ditches, or obstacles. A beginner rider should be in their comfort zone on all green trails.

**Blue (Square) – Safe for intermediate level experience riders, trails/rides may have greater slopes, ditches, and obstacles. A beginner rider will be challenged moderately by sections of blue trails, intermediate riders will be comfortable.

***Black (Diamond) – Meant for experienced riders, these trails/rides will have sections that have steep slopes, larger ditches, or obstacles to traverse. Intermediate riders will be challenged by sections of black trails, experienced riders comfortable with most.

Proposed East Multiple Use Zone

Description

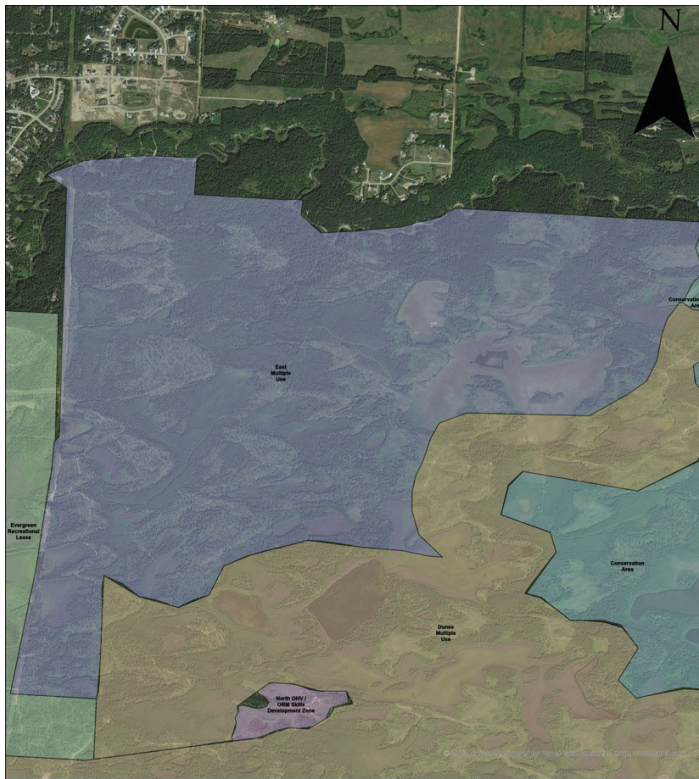
The intent in this area is to have a stacked loop of multi-use trails. They will be natural surface trails with front to mid country experiences and opportunities for the equestrian community to ride with little OHV (Off-Highway Vehicle) interaction.

Connections to Evergreen Park and to Bear Creek. Difficulty is to be mostly green* with some blue** trails.

If desirable, a single <1.83 m OHV trail may be considered.

Proposed Intent and Uses

- Hiking, trail running, equestrian, mountain bikes, snow shoeing, etc.
- Trail head and frequent wayfinding signage and visitor navigation, education, and compliance signage



East Multiple Use

*Green (Circle) – Safe for beginner riders, these trails/rides will typically be on forest service roads and trails that are flat and do not have off-camber slopes, bumps, ditches, or obstacles. A beginner rider should be in their comfort zone on all green trails.

**Blue (Square) – Safe for intermediate level experience riders, trails/rides may have greater slopes, ditches, and obstacles. A beginner rider will be challenged moderately by sections of blue trails, intermediate riders will be comfortable.

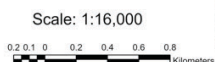
***Black (Diamond) – Meant for experienced riders, these trails/rides will have sections that have steep slopes, larger ditches, or obstacles to traverse. Intermediate riders will be challenged by sections of black trails, experienced riders comfortable with most.

Legend

- Trail Experience Zones
- Conservation Area
 - Dunes Multiple Use
 - East Multiple Use
 - Evergreen Recreational Lease
 - North OHV / ORV Skills Development Zone



© 2023 Government of Alberta
 Coordinate System: NAD83 10TM AEP Forest
 Prepared By: Central Planning
 Date of Completion: August 15, 2023
 Alberta Environment and Parks



Where applicable: Base data provided by the Government of Alberta under the Alberta Open Data License (2023).
 The Minister and the Crown provides this information without warranty or representation as to any matter including but not limited to whether the data/information is correct, accurate, or free from error, defect, danger, or hazard and whether it is otherwise useful or suitable for any use the user may make of it.

Proposed East Multiple Use Zone

Key Findings

Conflicts	Environmental Concerns	Potential Trail Amenities
<ul style="list-style-type: none">• OHV users would like shared access to the area• Disposition holders and trail managers may have to agree on crossing requirements or access requirements	<ul style="list-style-type: none">• Development• Litter and wildlife attractants• Animal waste	<ul style="list-style-type: none">• Rest area• Toilet• Picnic tables• Hitching rails

Rationale for Zone

- Based on current use, and input from stakeholders
- Known environmental sensitivities

Proposed Evergreen Recreational Lease Zone

Description

The intent of this zone is to provide multiuse loops with natural surfaces and a front country experience. Zone aligns with current lease and activities that already occur in the area.

Proposed Intent and Uses

- Hiking, trail running, equestrian, mountain bikes
- Mostly green* with some blue** difficulty year-round trails
- Connects to Evergreen Park
- Trail head and frequent wayfinding signage and visitor navigation, education, and compliance signage
- If required, option for a single OHV (Off-Highway Vehicle) <1.83 m trail to connect mixed use zones



Evergreen Recreational Lease

*Green (Circle) – Safe for beginner riders, these trails/rides will typically be on forest service roads and trails that are flat and do not have off-camber slopes, bumps, ditches, or obstacles. A beginner rider should be in their comfort zone on all green trails.

**Blue (Square) – Safe for intermediate level experience riders, trails/rides may have greater slopes, ditches, and obstacles. A beginner rider will be challenged moderately by sections of blue trails, intermediate riders will be comfortable.

***Black (Diamond) – Meant for experienced riders, these trails/rides will have sections that have steep slopes, larger ditches, or obstacles to traverse. Intermediate riders will be challenged by sections of black trails, experienced riders comfortable with most.

Legend

Trail Experience Zones

- Access / Staging Zone
- Dunes Multiple Use
- East Multiple Use
- Evergreen Recreational Lease
- Noise Buffer Zone
- West Multiple Use

Scale: 1:11,000
0 0.050 0.1 0.2 0.3 0.4
Kilometers



© 2023 Government of Alberta
Coordinate System: NAD83 10TM AEP Forest
Prepared By: Central Planning
Date of Completion: August 15, 2023
Alberta Environment and Parks
Where applicable: Base data provided by the Government of Alberta under the Alberta Open Data License (2023).
The Minister and the Crown provides this information without warranty or representation as to any matter including but not limited to whether the data/information is correct, accurate, or free from error, defect, danger or hazard and whether it is otherwise useful or suitable for any use the user may make of it.

Proposed Evergreen Recreational Lease Zone

Key Findings

Conflicts	Environmental Concerns	Potential Trail Amenities
<ul style="list-style-type: none">• OHV users feel that the area has become over developed and no longer feels like Crown land• Recreational lease management and maintenance keeps area clean	<ul style="list-style-type: none">• Development• Litter and wildlife attractants• Recreational lease management and maintenance keeps area clean	<ul style="list-style-type: none">• Formalized bridge over Bear Creek in NW corner might be considered to connect subdivisions• Rest area• Toilet• Picnic tables• Hitching rails

Rationale for Zone

- Based on current use and recreational lease in the area

Proposed Facility-Based/Commercial Zone

Description

The proposed zone would provide intensive recreation facilities, whether owned and operated by the commercial or public sectors. Intent would be to encourage and promote trails tourism in the area.

Amenities and services are intended to elevate the visitor experience and promote the benefits associated with trails tourism.

Proposed Intent and Uses

- Trail-based visitor's facilities could include, but may not be limited to serviced campground, comfort camping, fixed roof accommodation, event hosting amenities, OHV adventure play park, food and beverage, retail, equipment repair, fuel, and other potential development



Facility Based / Commercial Zone

Legend

- Trail Experience Zones
- Dunes Multiple Use
 - Facility Based / Commercial Zone



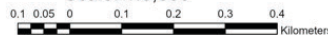
© 2023 Government of Alberta
 Coordinate System: NAD83 10TM AEP Forest
 Prepared By: Central Planning
 Date of Completion: August 15, 2023

Alberta Environment and Parks

Where applicable: Base data provided by the Government of Alberta under the Alberta Open Data License (2023).

The Minister and the Crown provides this information without warranty or representation as to any matter including but not limited to whether the data/information is correct, accurate, or free from error, defect, danger, or hazard and whether it is otherwise useful or suitable for any use the user may make of it.

Scale: 1:6,000



Proposed Facility-Based/Commercial Zone

Key Findings

Conflicts	Environmental Concerns	Potential Trail Amenities
<ul style="list-style-type: none">• Industry and recreation• Area being used for family play area• Many vehicles on the weekend	<ul style="list-style-type: none">• Development• Litter and burnt vehicles• Wildlife displacement and attractants	<ul style="list-style-type: none">• Trail-based visitor facilities• Serviced campground, comfort camping• Fixed roof accommodation• Event hosting amenities• OHV adventure play park• Food and beverage, retail, equipment repair, fuel and other amenities and services to elevate the visitor experience and the benefits associated with trail tourism.

Rationale for Zone

- Based on current use and recreational lease in the area

Proposed Mountain Bike Recreational Lease Zone

Description

This zone will maintain current use as an intensive use stacked loop network of professionally designed flow and tech enduro mountain bike trails to be used in the summer. In the winter, the zone provides downhill skiing opportunities. Area provides connections to the O'Brien Provincial Park cross-country ski network. Largest portion of the trails are blue** in difficulty followed by black***.

Proposed Intent and Uses

- Trails support rider progression green* to black diamond***
- Natural and constructed technical features



Legend

- Trail Experience Zones
- Mountain Bike Recreational Lease
 - O'Brien Recreational Zone

Mountain Bike Recreational Lease



© 2023 Government of Alberta
 Coordinate System: NAD83 10TM AEP Forest
 Prepared By: Central Planning
 Date of Completion: August 15, 2023

Alberta Environment and Parks
 Where applicable: Base data provided by the Government of Alberta under the Alberta Open Data License (2023).

The Minister and the Crown provides this information without warranty or representation as to any matter including but not limited to whether the data/information is correct, accurate, or free from error, defect, danger, or hazard and whether it is otherwise useful or suitable for any use the user may make of it.



*Green (Circle) – Safe for beginner riders, these trails/rides will typically be on forest service roads and trails that are flat and do not have off-camber slopes, bumps, ditches, or obstacles. A beginner rider should be in their comfort zone on all green trails.

**Blue (Square) – Safe for intermediate level experience riders, trails/rides may have greater slopes, ditches, and obstacles. A beginner rider will be challenged moderately by sections of blue trails, intermediate riders will be comfortable.

***Black (Diamond) – Meant for experienced riders, these trails/rides will have sections that have steep slopes, larger ditches, or obstacles to traverse. Intermediate

Proposed Mountain Bike Recreational Lease Zone

Key Findings

Conflicts	Environmental Concerns	Potential Trail Amenities
<ul style="list-style-type: none"> • Recreational Lease manages conflicts through memberships and trail management 	<ul style="list-style-type: none"> • Development • Litter and wildlife attractants 	<p>Parking / Staging Area - Type 1 (High Use) Trailhead</p> <ul style="list-style-type: none"> • Toilets • Waste receptacles • Picnic tables <p>Day use and Lodge (located central at the area entrance)</p> <ul style="list-style-type: none"> • Parking and turn around area • Toilets • Benches • Ski and rest lodge • Picnic tables • Lockers • Ski racks • Bike racks <p>Existing lodge, parking lot, BBQ hut, group site and Pavilion, camping sites, aerial water ramp</p>

Rationale for Zone

- Based on current use and input from stakeholders
- Current recreational lease use

Proposed Noise Buffer Zone

Description

This zone provides a noise buffer for residents.

Proposed Intent and Uses

- Noise and activity buffer for residential buildings to the north



Legend

Trail Experience Zones

- Access / Staging Zone
- Dunes Multiple Use
- Evergreen Recreational Lease
- Noise Buffer Zone
- West Multiple Use

Noise Buffer Zone (150 m buffer)



© 2023 Government of Alberta
 Coordinate System: NAD83 10TM AEP Forest
 Prepared By: Central Planning
 Date of Completion: August 15, 2023
 Alberta Environment and Parks
 Where applicable: Base data provided by the Government of Alberta under the Alberta Open Data License (2023).
 The Minister and the Crown provides this information without warranty or representation as to any matter including but not limited to whether the data/information is correct, accurate, or free from error, defect, danger, or hazard and whether it is otherwise useful or suitable for any use the user may make of it.

Scale: 1:6,300
 0.04 0.04 0.08 0.12 0.16
 Kilometers

Key Findings

Conflicts

- OHV users want to access the area

Environmental Concerns

- Noise pollution

Potential Trail Amenities

- None

Rationale for Zone

- Based on input from stakeholders

Proposed North OHV/ORM Skills Development Zone

Description

This zone is intended to support the development and learning of OHV (Off-Highway Vehicle) and ORM (Off-Road Motorcycle) riders' technical skills and abilities. The area will provide play and challenge features along with technical features to develop rider skills.

Proposed Intent and Uses

- Learner loops and natural technical trail features (off camber, elevated turns, hill climbs, drops, tabletop jumps, gap jumps, step ups, skinnies, rock twisters and other)
- Play challenge and skill development for visitors
- Picnic tables and pit toilets at viewing locations



North OHV ORM Skills Development Zone

Legend

- Trail Experience Zones**
- Dunes Multiple Use
 - North OHV / ORM Skills Development Zone



© 2023 Government of Alberta
 Coordinate System: NAD83 10TM AEP Forest
 Prepared By: Central Planning
 Date of Completion: August 15, 2023
 Alberta Environment and Parks
 Where applicable: Base data provided by the Government of Alberta under the Alberta Open Data License (2023).
 The Minister and the Crown provides this information without warranty or representation as to any matter including but not limited to whether the data/information is correct, accurate, or free from error, defect, damage or hazard and whether it is otherwise useful or suitable for any use the user may make of it.



Proposed North OHV/ORM Skills Development Zone

Key Findings

Conflicts	Environmental Concerns	Potential Trail Amenities
<ul style="list-style-type: none">• Steep slopes can pose safety and erosion risk• Injuries can occur on technical features• Disposition holders and trail managers may have to agree on crossing requirements or access requirements	<ul style="list-style-type: none">• Crossing through wet areas• Soil compaction• Garbage complaints in area• Exhaust noise• Fire risk	<ul style="list-style-type: none">• Picnic tables• Warming shelter

Rationale for Zone

- Based on input from stakeholders
- Observed current uses
- Terrain in the area

Proposed O'Brien Recreational Zone

Description

The proposed use of this zone is a stacked loop network of multi-use, natural surfaced trails in a front country recreation setting. Summer and winter activities are supported that are short or multi-hour with mostly a green* difficulty level. The zone provides connectivity to Nitehawk Adventure Park with access trails directly from the facility or from the O'Brien Provincial Park staging area.

Proposed Intent and Uses

- Hiking, trail running, and mountain / fat biking (self-propelled and class 1 e-bikes only)
- Winter un-groomed cross-country skiing, snowshoeing and fat biking (self-propelled and class 1 e-bikes only)



O'Brien Recreational Zone

Legend

Trail Experience Zones

- Access / Staging Zone
- Mountain Bike Recreational Lease
- O'Brien Recreational Zone



© 2023 Government of Alberta
 Coordinate System: NAD83 10TM AEP Forest
 Prepared By: Central Planning
 Date of Completion: August 15, 2023

Alberta Environment and Parks

Where applicable: Base data provided by the Government of Alberta under the Alberta Open Data License (2023).

The Minister and the Crown provides this information without warranty or representation as to any matter including but not limited to whether the data/information is correct, accurate, or free from error, defect, danger, or hazard and whether it is otherwise useful or suitable for any use the user may make of it.

Scale: 1:8,500



*Green (Circle) – Safe for beginner riders, these trails/rides will typically be on forest service roads and trails that are flat and do not have off-camber slopes, bumps, ditches, or obstacles. A beginner rider should be in their comfort zone on all green trails.

**Blue (Square) – Safe for intermediate level experience riders, trails/rides may have greater slopes, ditches, and obstacles. A beginner rider will be challenged moderately by sections of blue trails, intermediate riders will be comfortable.

***Black (Diamond) – Meant for experienced riders, these trails/rides will have sections that have steep slopes, larger ditches, or obstacles to traverse. Intermediate riders will be challenged by sections of black trails, experienced riders comfortable with most.

Proposed O'Brien Recreational Zone

Key Findings

Conflicts	Environmental Concerns	Potential Trail Amenities
<ul style="list-style-type: none">• Potential for bike and pedestrian conflict	<ul style="list-style-type: none">• Development• Litter and wildlife attractants	<ul style="list-style-type: none">• On-trail visitor amenities will be minimal• Benches at rest area viewpoints• Trailhead• Frequent on-trail wayfinding, education, and compliance signage

Rationale for Zone

- Based on current use and input from stakeholders
- Current recreational lease use

Proposed South OHV/ORM Recreational Skills Lease Zone

Description

This zone is intended to support the development and learning of OHV (Off-Highway Vehicle) and ORM (Off-Road Motorcycle) riders' technical skills and abilities. The area will provide play and challenge features along with technical features to develop rider skills.

Proposed Intent and Uses

- Learner loops and natural technical trail features (off camber, elevated turns, hill climbs, drops, tabletop jumps, gap jumps, step ups, skinnies, rock twisters and other)
- Play challenge and skill development for visitors
- Picnic tables and pit toilets at viewing locations



South OHV / ORM Skills Lease

Legend

- Trail Experience Zones
- Big Mountain West
 - South OHV / ORM Recreational Skills Lease



© 2023 Government of Alberta
 Coordinate System: NAD83 10TM AEP Forest
 Prepared By: Central Planning
 Date of Completion: August 15, 2023
 Alberta Environment and Parks
 Where applicable: Base data provided by the Government of Alberta under the Alberta Open Data License (2023).
 The Minister and the Crown provides this information without warranty or representation as to any matter including but not limited to whether the data/information is correct, accurate, or free from error, defect, damage, or hazard and whether it is otherwise useful or suitable for any use the user may make of it.



Proposed South OHV/ORM Recreational Skills Lease Zone

Key Findings

Conflicts	Environmental Concerns	Potential Trail Amenities
<ul style="list-style-type: none">• Steep slopes can pose safety and erosion risk• Injuries can occur on technical features• Disposition holders and trail managers may have to agree on crossing requirements or access requirements	<ul style="list-style-type: none">• Crossing through wet areas• Soil compaction• Garbage complaints in area• Exhaust noise• Fire risk	<ul style="list-style-type: none">• Picnic tables• Warming shelter• Single rest area halfway• Picnic tables• Warming shelter• Pit toilet

Rationale for Zone

- Based current recreational lease use
- Based on input from stakeholders
- Observed current uses
- Terrain in the area

Proposed Wapiti East Zone

Description

This zone provides an intensive stacked loop of natural surface ORM networks, with mid country settings. There are single track OHV/ORM (Off-Highway Vehicle/Off-Road Motorcycle) loops that will be maintained and a loop that supports up to 1.83 m OHV and snowmobile width that can be the artery loop. There are flow and technical ORM trails that are green* to black diamond*** in difficulty.

Proposed Intent and Uses

- Mid country; largest portion is blue** difficulty
- Natural and constructed technical trail features may occur, including skill filters with optional lines available
- Basic wayfinding, regulatory, and educational signage at pullout or viewpoints



Wapiti East Zone

Legend

Trail Experience Zones

- Conservation Area
- Dunes Multiple Use
- Wapiti East Zone



© 2023 Government of Alberta
 Coordinate System: NAD83 10TM AEP Forest
 Prepared By: Central Planning
 Date of Completion: August 15, 2023
 Alberta Environment and Parks
 Where applicable: Base data provided by the Government of Alberta under the Alberta Open Data License (2023).

Scale: 1:27,000
 0.05 0.150.30.450.6
 Kilometers

The Minister and the Crown provides this information without warranty or representation as to any matter including but not limited to whether the data/information is correct, accurate, or free from error, defect, damage, or hazard and whether it is otherwise useful or suitable for any use the user may make of it.

*Green (Circle) – Safe for beginner riders, these trails/rides will typically be on forest service roads and trails that are flat and do not have off-camber slopes, bumps, ditches, or obstacles. A beginner rider should be in their comfort zone on all green trails.

**Blue (Square) – Safe for intermediate level experience riders, trails/rides may have greater slopes, ditches, and obstacles. A beginner rider will be challenged moderately by sections of blue trails, intermediate riders will be comfortable.

***Black (Diamond) – Meant for experienced riders, these trails/rides will have sections that have steep slopes, larger ditches, or obstacles to traverse. Intermediate riders will be challenged by sections of black trails, experienced riders comfortable with most.

Proposed Wapiti East Zone

Key Findings

Conflicts	Environmental Concerns	Potential Trail Amenities
<ul style="list-style-type: none">• Steep slopes can pose safety risks• Deep ruts make travel difficult and muddy• Illegal crossings of Bear Creek• User demand is growing staging area may require improvements• Disposition holders and trail managers may have to agree on crossing requirements or access requirements	<ul style="list-style-type: none">• Crossings through wetlands• Illegal crossings of Bear Creek to grazing leases• Erosion risk on slopes• Noise• Fire risk• Wetland and creek crossings• Soil compaction	<ul style="list-style-type: none">• Amenities limited to viewpoints and pullouts• Staging area Improvements• Rest area near creek• Single rest area halfway• Picnic tables• Warming shelter• Pit toilet

Rationale for Zone

- Based on input from stakeholders
- Observed current uses
- Terrain in the area
- Known environmental sensitivities
- Bear River Wapiti Local Integrated Resource Plan
- Wapiti Sand Dunes Land Use Zones

Proposed West Multiple Use Zone

Description

The intent in this area is to have a stacked loop of hiking, biking, and equestrian optimized multi-use trails. They will be natural surface trails with front to mid country experiences and opportunities for the equestrian community to ride with little OHV (Off-Highway Vehicle) interaction. Intended to have connections to Winter Optimized Zone. Difficulty is to be mostly green* with some blue** trails. If desirable, <1.83 m OHV trails may be considered.

Proposed Intent and Uses

- Hiking, trail running, equestrian, mountain bikes, snow shoeing, etc
- Trail head and frequent wayfinding signage and visitor navigation, education, and compliance signage



West Multiple Use

*Green (Circle) – Safe for beginner riders, these trails/rides will typically be on forest service roads and trails that are flat and do not have off-camber slopes, bumps, ditches, or obstacles. A beginner rider should be in their comfort zone on all green trails.

**Blue (Square) – Safe for intermediate level experience riders, trails/rides may have greater slopes, ditches, and obstacles. A beginner rider will be challenged moderately by sections of blue trails, intermediate riders will be comfortable.

***Black (Diamond) – Meant for experienced riders, these trails/rides will have sections that have steep slopes, larger ditches, or obstacles to traverse. Intermediate riders will be challenged by sections of black trails, experienced riders comfortable with most.

Legend

- Trail Experience Zones
- Access / Staging Zone
 - Dunes Multiple Use
 - Evergreen Recreational Lease
 - Noise Buffer Zone
 - West Multiple Use
 - Winter Recreational Lease



© 2023 Government of Alberta
 Coordinate System: NAD83 10TM AEP Forest
 Prepared By: Central Planning
 Date of Completion: August 15, 2023
 Alberta Environment and Parks

Where applicable: Base data provided by the Government of Alberta under the Alberta Open Data License (2023).

The Minister and the Crown provides this information without warranty or representation as to any matter including but not limited to whether the data/information is correct, accurate, or free from error, defect, damage, or hazard and whether it is otherwise useful or suitable for any use the user may make of it.

Scale: 1:14,500



Proposed West Multiple Use Zone

Key Findings

Conflicts	Environmental Concerns	Potential Trail Amenities
<ul style="list-style-type: none">• OHV users would like shared access to the area• Disposition holders and trail managers may have to agree on crossing requirements or access requirements	<ul style="list-style-type: none">• Development• Litter and wildlife attractants• Animal waste	<ul style="list-style-type: none">• Rest area• Toilet• Picnic tables• Hitching rails

Rationale for Zone

- Based on current use and input from stakeholders
- Known environmental sensitivities

Proposed Winter Recreational Lease Zone

Description

This area will maintain current use as an intensively used, stacked loop network of groomed Nordic ski (classic, skate, biathlon) trails and multi-use trails for snowshoeing / fat biking and hiking within the Wapiti Nordic Ski Club's lease. Front country experiences can be expected.

Proposed Intent and Uses

- Optimized for winter use. Network will include groomed cross-country ski trails (class and skate) and a separated multi-use trail network for snowshoeing, fat bike and hiking. Non-winter use of the trail system will include hiking, trail running, and mountain biking
- Can host trail-based races and events Wapiti Nordic Ski Club's Lease will be managed through a trail pass or annual membership
- Visitor lodge, competition amenities, biathlon range, rest areas with picnic tables, warming shelter and pit toilets. Trailhead and frequent on-trail wayfinding signage will be provided to support visitor navigation, education and compliance



Winter Recreational Lease

Legend

Trail Experience Zones

- West Multiple Use
- Winter Recreational Lease



© 2023 Government of Alberta
 Coordinate System: NAD83 UTM AEP Forest
 Prepared By: Central Planning
 Date of Completion: August 15, 2023
 Alberta Environment and Parks

Where applicable: Base data provided by the Government of Alberta under the Alberta Open Data License (2023).
 The Minister and the Crown provides this information without warranty or representation as to any matter including but not limited to whether the data information is correct, accurate, or free from error, omission, change, or fraud and whether it is otherwise useful or suitable for any use the user may make of it.



Proposed Winter Recreational Lease Zone

Key Findings

Conflicts	Environmental Concerns	Potential Trail Amenities
<ul style="list-style-type: none">• Recreational Lease manages conflicts through memberships and trail management	<ul style="list-style-type: none">• Development• Litter and wildlife attractants	<p>Parking / Staging Area - Type 1 (High Use)</p> <p>Trailhead</p> <ul style="list-style-type: none">• Toilets• Waste receptacles• Picnic tables <p>Day use and Lodge (located central at the area entrance)</p> <ul style="list-style-type: none">• Parking and turn around area• Toilets• Benches• Ski and rest lodge• Picnic tables• Lockers• Ski racks• Bike racks• Competition• Biathlon range <p>Two existing lodges and three existing parking lots</p>

Rationale for Zone

- Based on current use and input from stakeholders
- Current recreational lease use

Appendix A: Project Scope

The Wapiti area has been divided into five planning units for the purpose of the Wapiti Recreation and Trail Management Plan project, as shown in the map of the Wapiti planning area below. These units are based on a variety of factors including primary use (motorized, non-motorized), natural features (watercourses, environmental sensitive, and wildlife corridors), recreation and resource leases, and recreational opportunities. After discussions with stakeholders, it was decided that the focus of the current planning process would be:

1. Wapiti Dunes
2. Wapiti Nordic Centre
3. South Wapiti

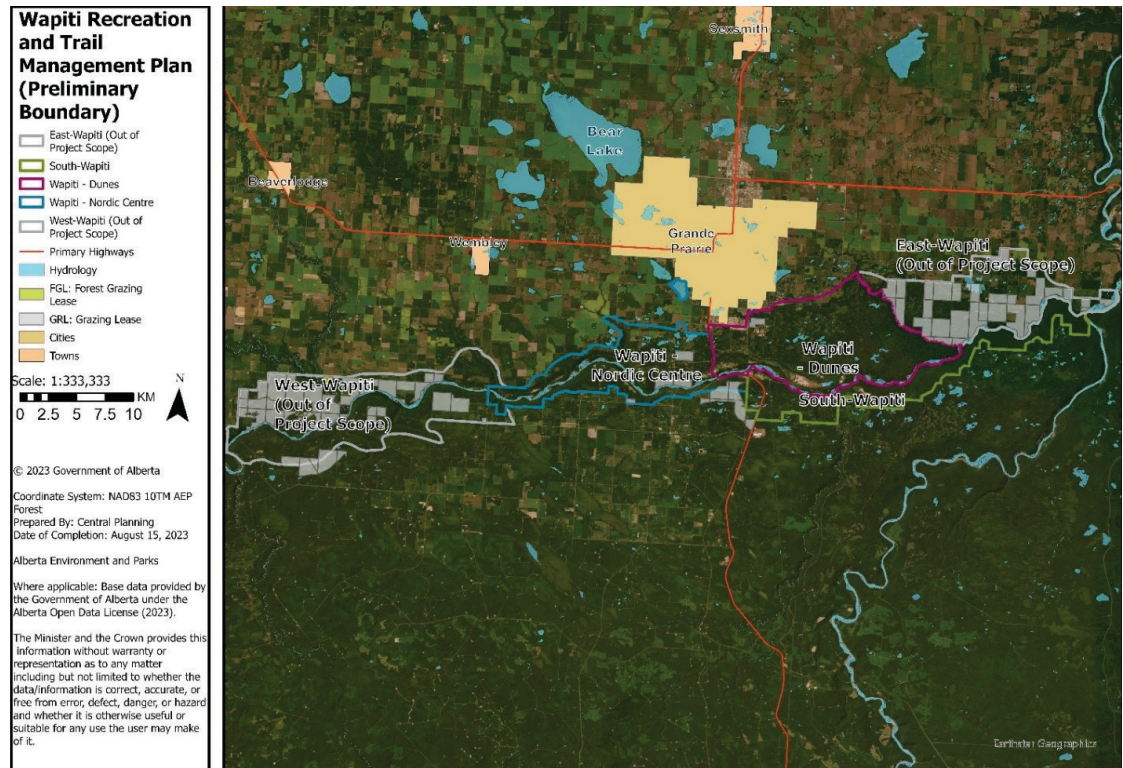
These areas are most extensively used for recreation and trail-based activities. They are collectively referred to in this engagement as the Wapiti planning area.

The following planning units are excluded from the current planning process:

1. East Wapiti
 - This area is mainly used for grazing leases, under agricultural dispositions. The recreation access to this area is managed under the Recreation Access Regulation.
2. West Wapiti
 - This area has potential opportunities for recreation and trail-based activities. Further assessment and inventory are required and will be considered for future trail planning.

The Wapiti Recreation and Trail Management Plan will only provide recommendations for trails on public lands. There will be no recommendations made for private lands encompassed within the planning areas.

Map:
Wapiti Planning Area



Alberta 