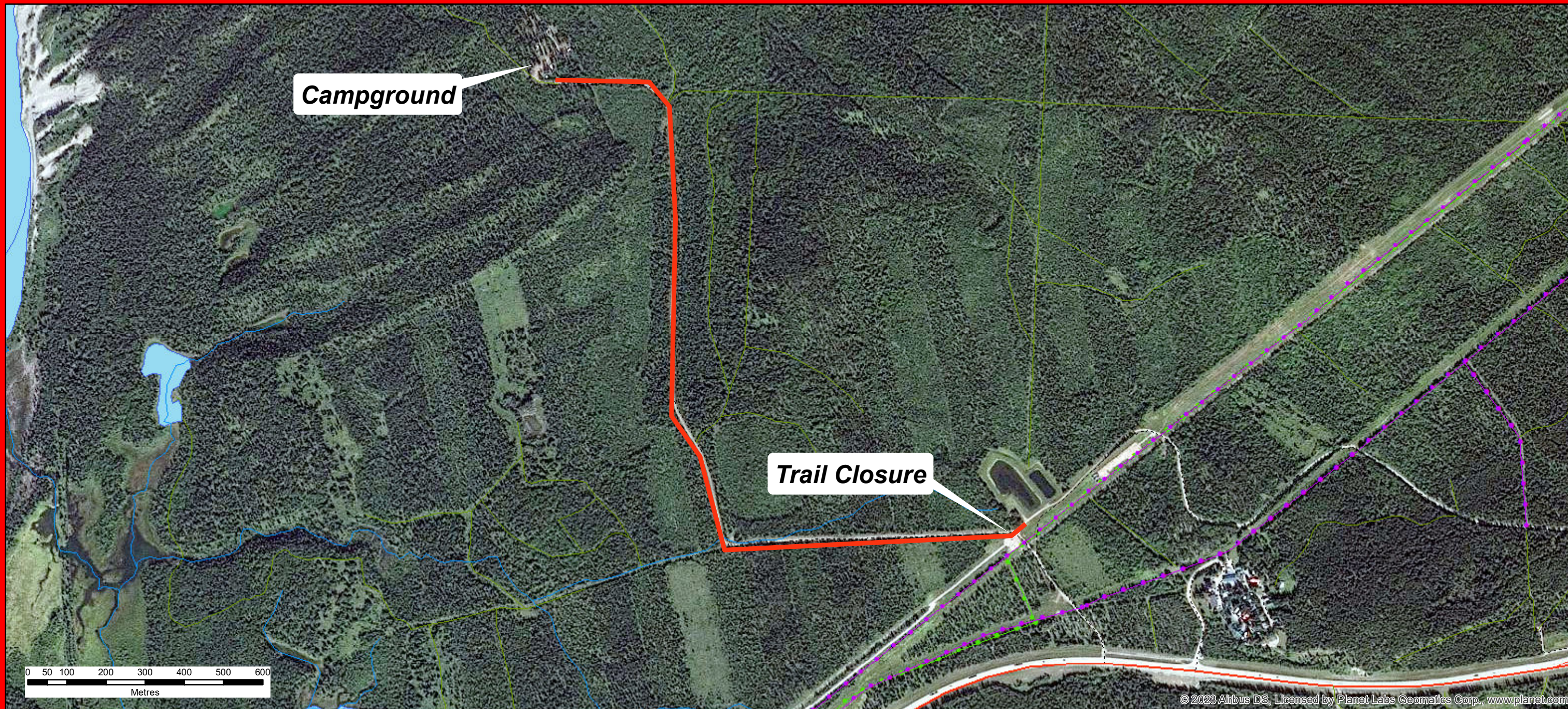


Temporary Trail Closure



Closed per Public Lands Administration
Regulation AR 187/2011 s. 199.4(1)
- Closure of Provincial Trail

General Location Lat: 53.240400 N° Long: -117.820062 W°
Effective Date: April 22nd, 2024

NOTICE: Temporary closure of the Brule South Access Trail to On-Highway Vehicles

Due to: Current Environmental conditions and the likelihood of damage if the trail is used at the present time.

For more information call 310-LAND(5263)



1:10,000



Information Team
Alberta Ministry of Environment and Parks
Source: Crown Copyright Data
Where applicable:
The Alberta Open Government License of November 2014
Maple Tree Data provided by NAV CANADA
SPOT Data CNE, Licensed by Inertis Consulting Corp.
Lethbridge, Alberta, Canada
Data Imagery: Sentinel-2, Sentinel-1, GeoEye, Earthstar
Geographic, CNES/Airbus DS, USDA, ESRI, AeroGRID,
IGN, and the GIS User Community
The Minister and the Crown provide this information
without warranty or representation in any matter
including but not limited to whether the data information
is correct, accurate or free from error, defect, danger,
or hazard use, whether it is otherwise stated or implied
for any use whatsoever made of it.
© 2021 Government of Alberta
SANDS™

