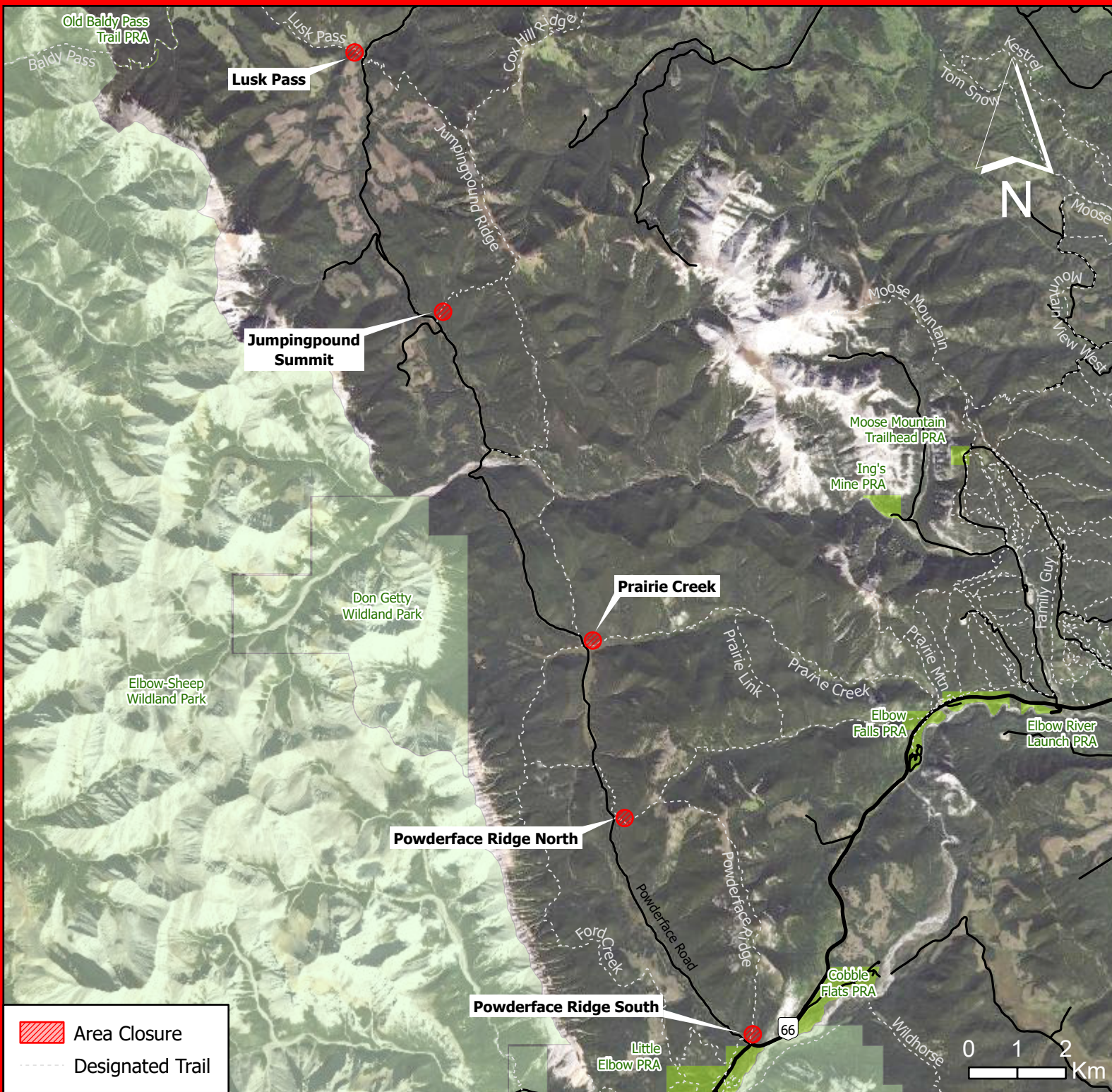


POWDERFACE ROAD PARKING AREA CLOSURE Closed for Construction

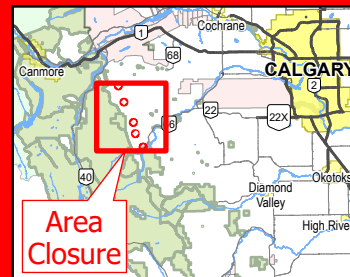


Closure Dates: June 22, 2026 - June 30, 2027

Powderface Road will remain open to vehicles, expect increased industrial traffic.

Undesignated parking areas along Powderface Road at Lusk Pass, Jumpingpound Summit, Prairie Creek, Jumpingpound Ridge North, and Jumpingpound Ridge South will be closed for construction. All trails outside of the closure areas remain open. The following designated trails can be accessed by travelling around the fenced closure areas: Lusk Pass, Jumpingpound Ridge – Lusk Climb, Jumpingpound Summit, Prairie Creek, Powderface Creek, and Powderface Ridge.

For more information, call 310-LAND(5263)



Alberta

Closure of Area
Section 184 Public
Lands Administration
Regulation AR187/2011