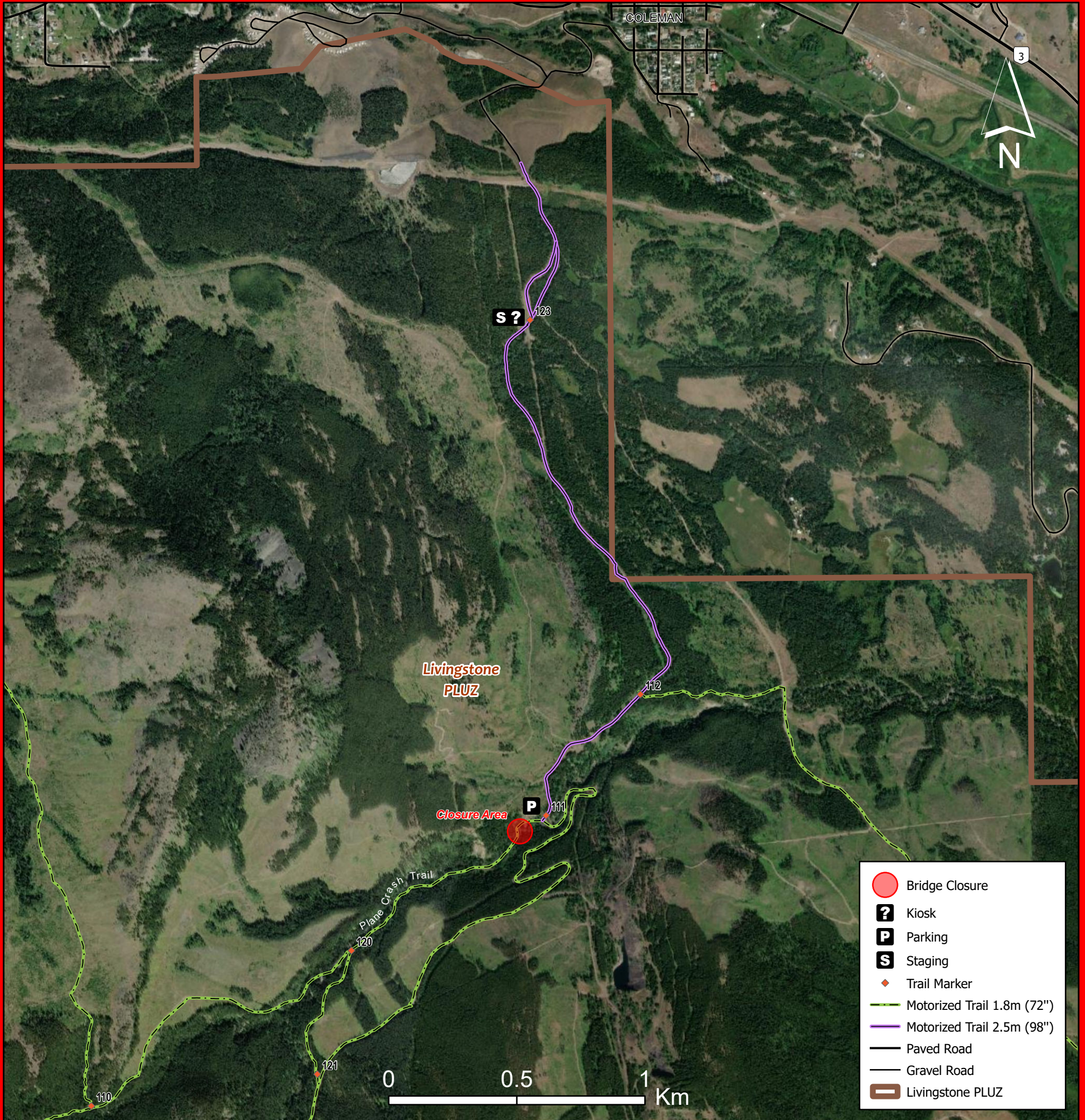


# YORK CREEK PLANE CRASH TRAIL CLOSED FOR MAINTENANCE



**Closure Dates: July 15, 2026 - July 16, 2026**

**For more information,  
call the Blairmore Ranger Station  
during regular business hours at (403) 562-3131  
or 310-LAND (5263)**

Closure of Area  
Section 184 Public  
Lands Administration  
Regulation AR187/2011

