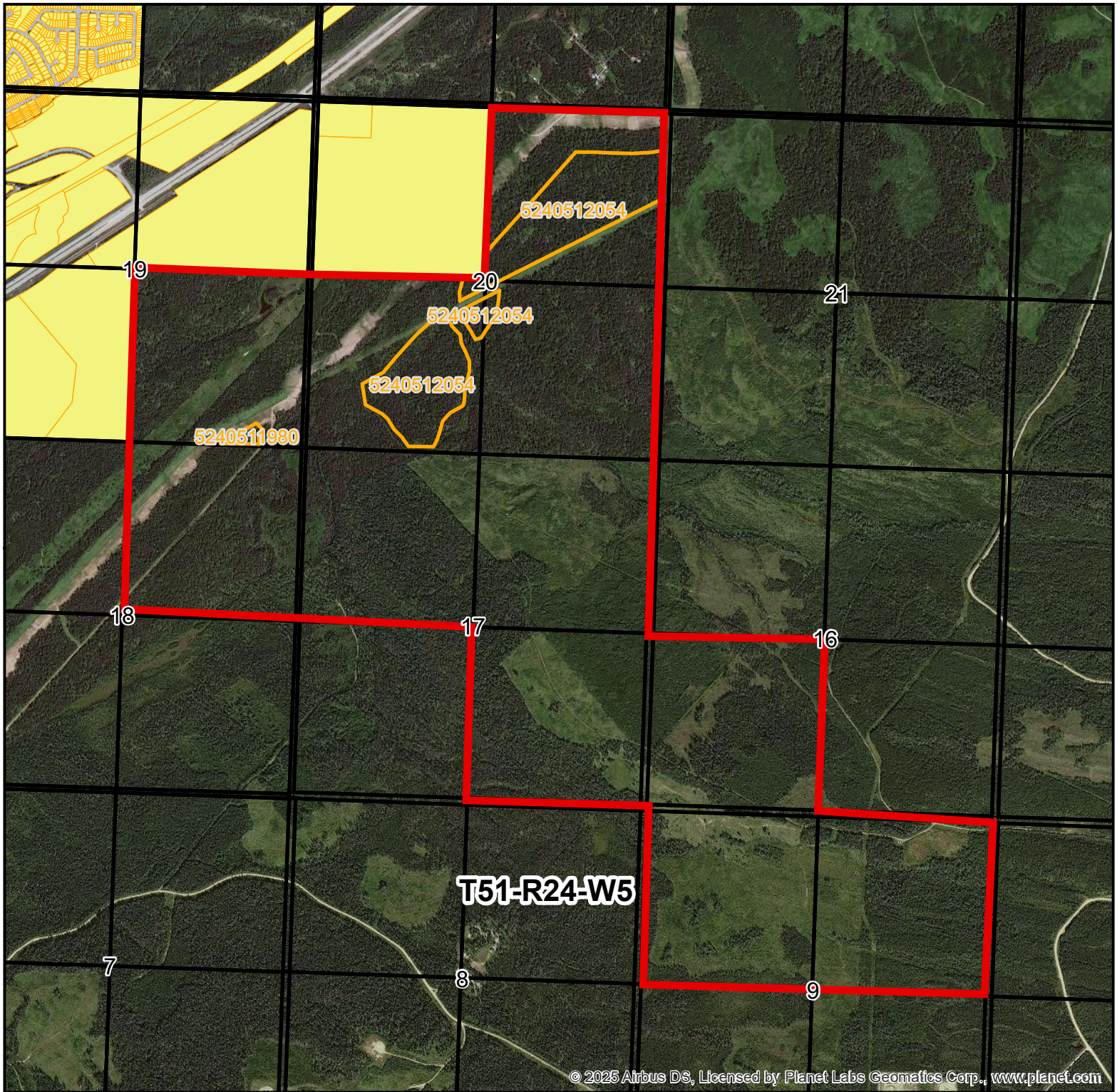


APPENDIX A



© 2025 Airbus DS, Licensed by Planet Labs Geomatics Corp., www.planet.com



1:25,000

Excludes bed and shore of all permanent and naturally occurring water bodies and water courses.

Base Map Data provided by the Government of Alberta under the Alberta Open Government Licence. November, 2014

Sketch prepared with data provided by Alberta Data Partnerships

Imagery © 2024 Airbus DS, Licensed by Planet Labs Geomatics Corp., www.planet.com

©2025 Government of Alberta All rights reserved.

The Minister and the Crown provides this information without warranty or representation As to any matter including but not limited to whether the data/information is correct, Accurate or free from error, defect, danger, or hazard, and whether it is otherwise useful or suitable for any use the user may make of it.

Edson Forest Area CTPE090008

- BOUNDARY OF CTPE090008
- PROPOSED HARVEST AREA
- LSD LINES
- QS LINES
- SEC LINES
- TWP LINES
- HYDRO POLYGON
- Hydro Lines
- Indian Reserves
- Metis Settlement
- Titled Lands - Private, Municipal, Federal
- Protected Areas

0 150 300 600 900 1,200 Meter

Projection: NAD_1983_10TM_AEP_Forest

DISPOSITION AREA (ha)	716.0
PROPOSED HARVEST AREA (ha)	47.0
CONIFER VOLUME (m3)	5538.0
DECIDIOUS VOLUME (m3)	5165.0
Plan Prepared By	PGC - Northcentral Geospatial Unit
Plan Prepared For	Provincial Timber Disposition Registrar
Plan Prepared Date	11/25/2025