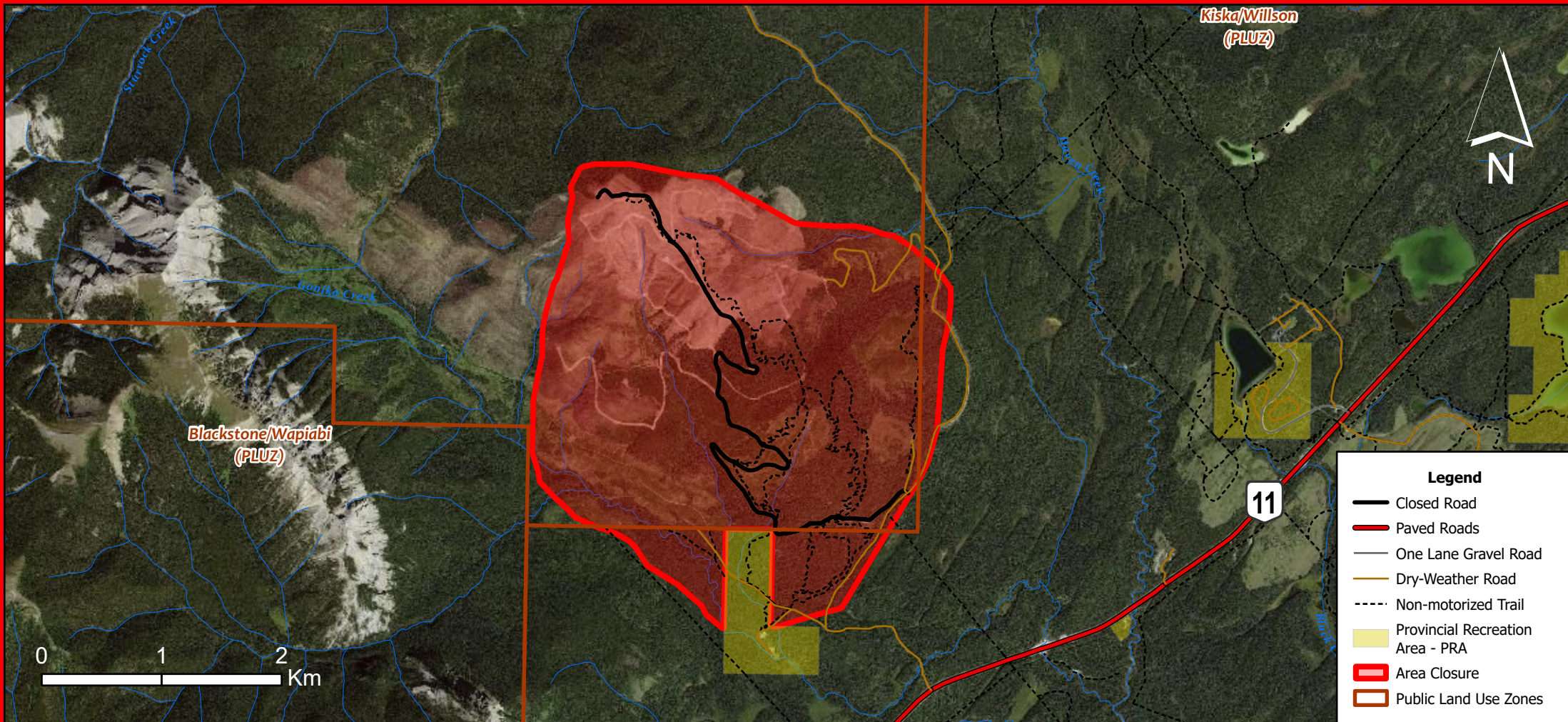


# BLACK MOUNTAIN TRAIL NETWORK CLOSURE

## Closed during timber harvest operations



**Alberta**  
Closure of Area  
Section 48(1) Public  
Lands Administration  
Regulation AR187/2011

**Closure Dates: January 26, 2026 - February 22, 2026**  
**For more information, call Rocky Mountain House office during  
regular business hours at (403) 845-8250 or 310-LAND (5263)**

