

South Athabasca Sub-regional Plan

Landscape Restoration

This plan relies on clear restoration outcomes and timely restoration of legacy, abandoned, and inactive footprint to ensure more land is available to support a variety of future land use.

Key Components of the Plan

- **Zonation (Page 9)** – The “Restoration First Zone” is a priority area for restoration actions that will contribute to increasing landscape intactness as soon as possible.
- **Bohn Restoration Program (Page 11)** – Over the next decade, area-based closure of legacy, abandoned, and inactive footprint will create large areas of undisturbed caribou habitat.
- **Restoration of inactive wells (Page 23)** – Over the next three decades, footprint associated with economically unproductive oil and gas wells should be restored.
- **Reforestation of non-commercial forests (Page 28)** – New restoration expectations require forestry companies to restore all temporary footprints, including existing disturbances used for road access.
- **Restoration outcomes (Page 42)** – New restoration expectations that return the land to what it was before a disturbance, including: trees will be planted if trees were there before a disturbance, caribou biophysical habitat will be returned to caribou biophysical habitat, and wetlands will be returned to wetlands.
- **Legacy Seismic Lines (Page 38)** – Over the next forty years legacy seismic lines across the sub-region will be restored, starting in the Nature First Zone and priority areas.

Restoration Facts

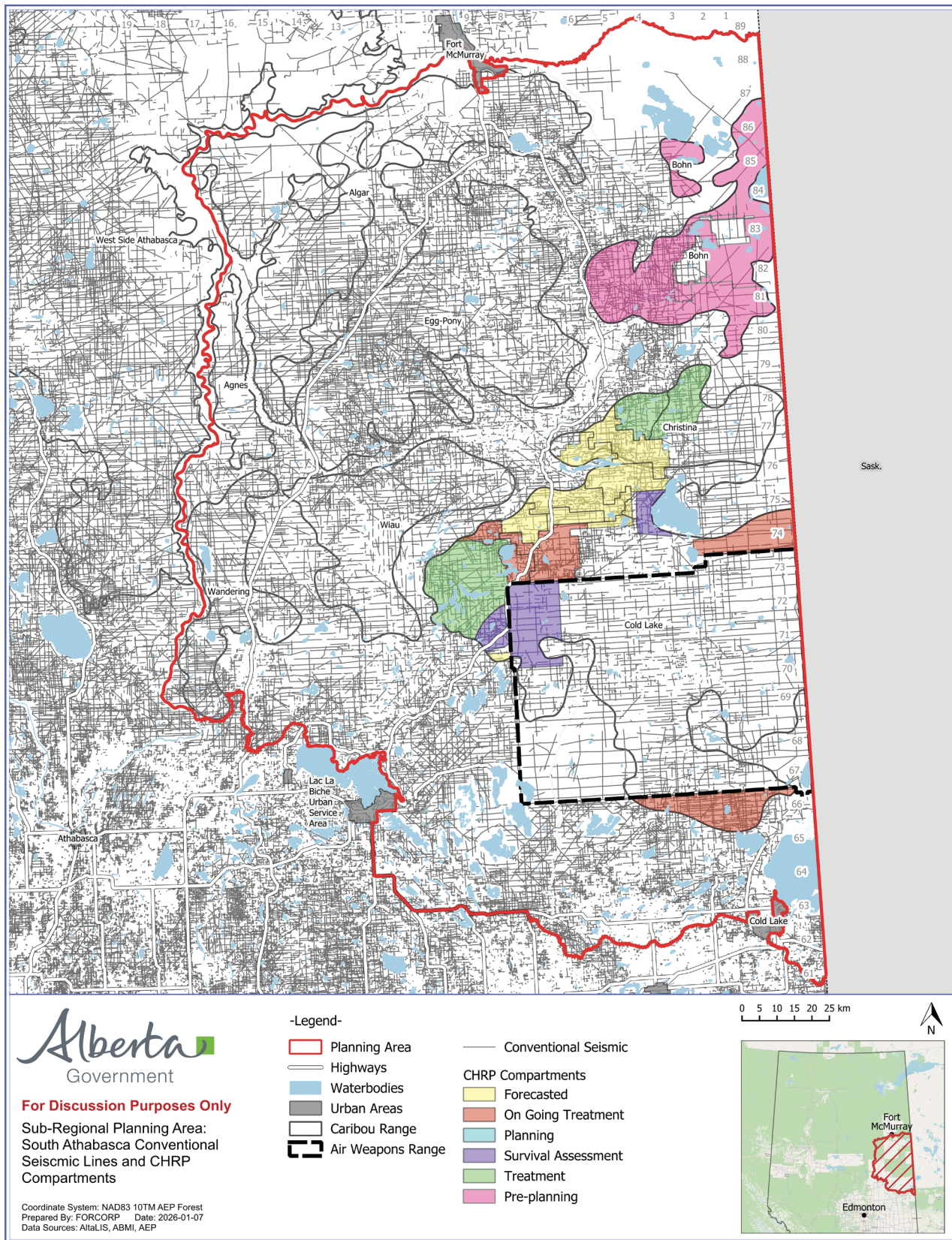
In this sub-region:

- Since 2018, the Caribou Habitat Recovery Program (CHRP) has assessed and treated more than 2,000 km of legacy seismic lines.
- Since 2018, the CHRP has planted nearly 2 million trees.
- There are more than 47,000 ha of legacy conventional seismic lines.
- There are more than 4,500 inactive oil and gas wells.
- Lichen that occurs in older conifer forests and treed wetlands is an important food source for caribou.

Bohn Restoration Project

- The Bohn Restoration Project is in the early planning stage. The project intends to develop a first-of-its-kind research and monitoring program.
- The project will help us understand how caribou population size changes in response to habitat restoration.
- Alberta is leading this project alongside Indigenous people, researchers, and industry.

Map of the legacy seismic lines within the sub-region, including areas where the Caribou Habitat Recovery Program has delivered, planned, or is actively planning treatment programs (This map does not appear in the SASRP).



For more information: alberta.ca/south-athabasca-sub-regional-plan-engagement

Email: epa.southathabascasrp@gov.ab.ca

©2026 Government of Alberta | Published: January 2026 | Environment and Protected Areas

Classification: Public

