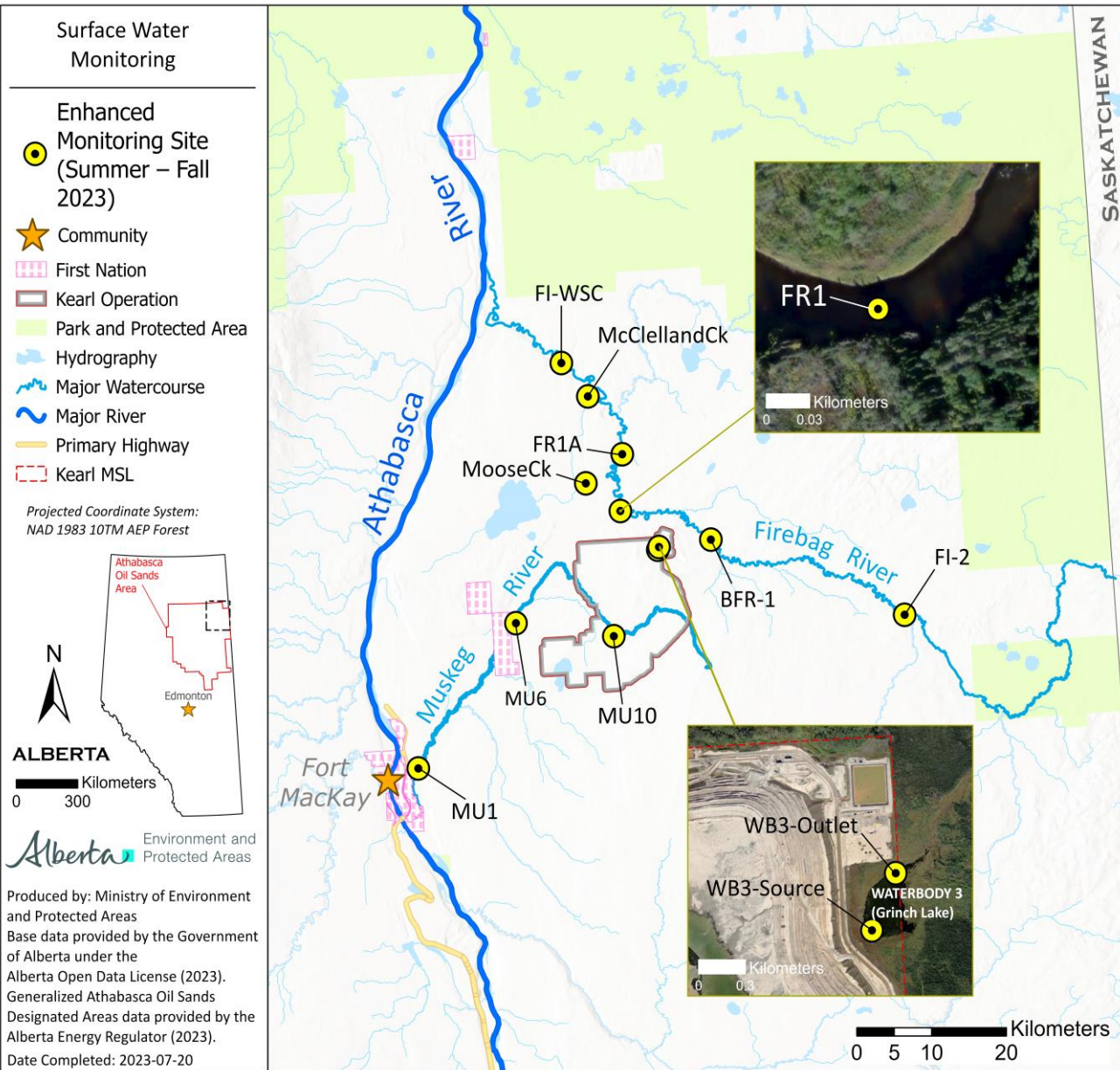


# Monthly enhanced sampling June, July, August, September 2023



Station short name	Station long name
WB3-source (to be sampled by IOL)	Waterbody 3 Near Source - Imperial Oil Limited, site WB-3-2)
WB3-outlet (to be sampled by IOL)	Waterbody 3 near outflow - IOL site CP-FT-A-3
Moose Creek	TBD
McClelland Creek	McClelland Lake Outlet above the Firebag River (at 07DC902)
FI-2	Firebag River 120 km u/s WSC gauge
BFR-1	Firebag - Imperial Oil Limited, Site BFR-1
FR1	Firebag River - IOL site FR-1
FR1A	Firebag River - IOL site FR-1-A
FI-WSC	Firebag River 20km u/s Of Mouth At Winter Road Crossing (FI-WSC)
MU10	Muskeg River 27.5 km u/s Stanley Creek
MU6	Muskeg River u/s Stanley Creek
MU1	Muskeg River at WSC gauge d/s of Kearl Lake Road