

Ardley Reservoir Scoping and Feasibility Study

Vegetation, Fish and Wildlife Surveys

Overview

Environment and Protected Areas (EPA) is exploring a potential new dam and water storage reservoir on the Red Deer River downstream of the City of Red Deer, near Ardley to reduce the impacts of flood and drought on Albertans and the economy. The Ardley Reservoir Scoping and Feasibility Study was initiated in October 2024. As part of evaluating the technical feasibility of potential dam options, EPA has engaged the Hatch Project Team to complete vegetation, fish and wildlife surveys that may require access to privately owned or leased land. No access will occur without the agreement of the property owner; A land access agreement will be completed prior to commencing any activities.

Why do vegetation, fish and wildlife surveys?

The surveys provide information to identify potential environmental impacts, guide mitigation measures and ensure that project planning aligns with ecological and regulatory requirements. The information is gathered by the following activities:

- Vegetation Surveys (early and late flowering periods)
- Fish and Wildlife Surveys

Vegetation Surveys (early and late flowering periods)

- Field staff will park in a suitable and safe location near the survey area and access the survey area on foot. Vegetation surveys will document observed plant species (native and introduced/invasive), ecosystem type, location, and will be supplemented with photographs.
- Surveys will be completed during the spring and summer of 2025.

Fish and Wildlife Surveys

- Field staff will park in a suitable and safe location near the survey area and access the survey area on foot.
- Wildlife Surveys will document observed wildlife species, wildlife signs (e.g., scat, dens, nests, browse), location, ecosystem type, and will be supplemented with photographs.
- Important wildlife habitat features such as rocky cliffs, wetlands, roosts, and dens will be documented.
- Fish habitat surveys will be conducted on water by boat (motorized or non-motorized). Boats will be launched at designated public access points. Surveys will document observed fish species (e.g. trout, sturgeon, etc.), locations, ecosystem type, and will be supplemented with photographs.
- Surveys are conducted with minimal disruption to wildlife and habitats.

Amphibian Survey

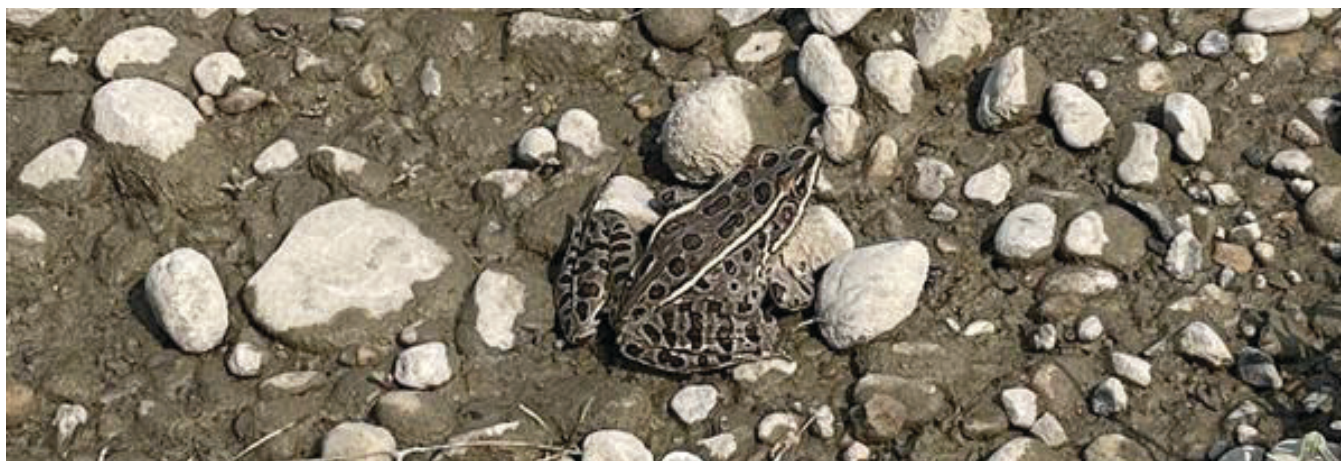


Photo: Animal Tracking (footprints)



Photo: Hatch

Photo: Vegetation Survey



Photo: Hatch