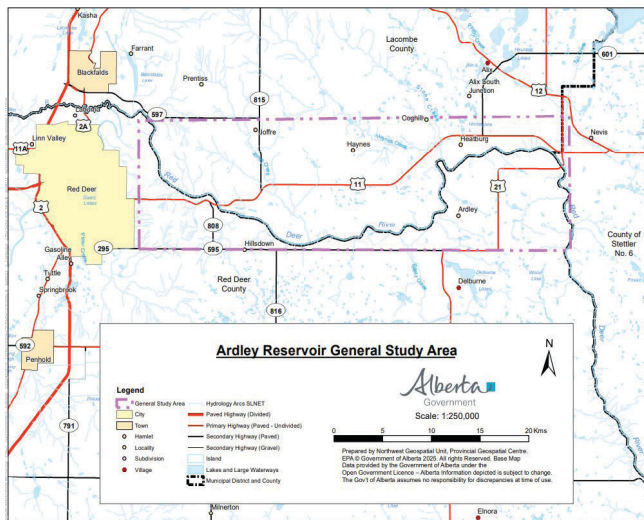


Ardley Reservoir Study Engagement

Overview

The Government of Alberta is studying the possibility of building a dam and reservoir on the Red Deer River near the Hamlet of Ardley. This potential reservoir could store water for future use and support communities, the environment, and the economy.



Why this matters

Alberta's population and economy are growing and demand for water is increasing.

This study is looking at how additional storage could help:

- reduce the impacts of drought
- lower the risk of flooding
- support agriculture and irrigation
- provide water for communities and industry

Study area

The study area is along the Red Deer River, east of the City of Red Deer and the Content Bridge (Highway 21 crossing).

It includes land in:

- Lacombe County
- Red Deer County
- County of Stettler No. 6

Both public and privately owned lands are part of the study area.

Scoping and Feasibility Study

The study began in October 2024 and includes two phases.

Scoping (complete)

- Looked at possible dam and reservoir locations
- Reviewed existing environmental and technical data to compare options
- Identified the most promising options to study further

Feasibility (current)

- Takes a closer look at three potential options
- Field studies of the soil, water, wildlife, vegetation etc.
- Assess environmental, technical, cultural, economic and community considerations

Next Steps

The study will continue until fall 2026, including ongoing analysis and engagement.

When the study is complete:

- The Government of Alberta will review the results.
- A decision will be made about whether to proceed to further evaluation of an option.

Share your input to help inform decisions about water storage in Alberta.
alberta.ca/ardley-reservoir-study-engagement

©2026 Government of Alberta | Published: June 2026 | Environment and Protected Areas

Classification: Public

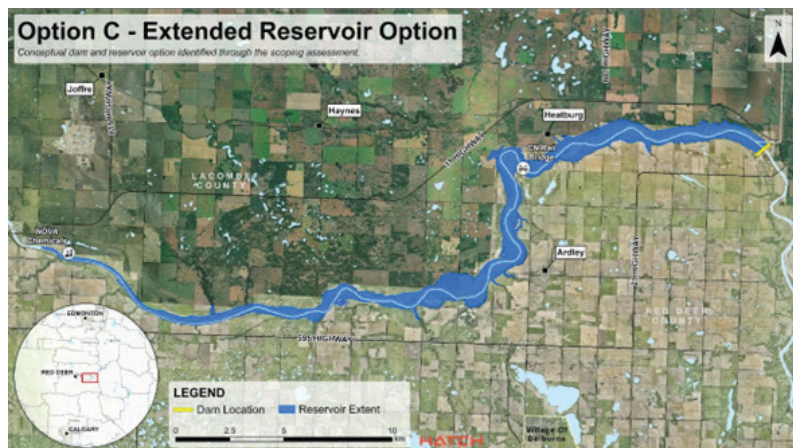
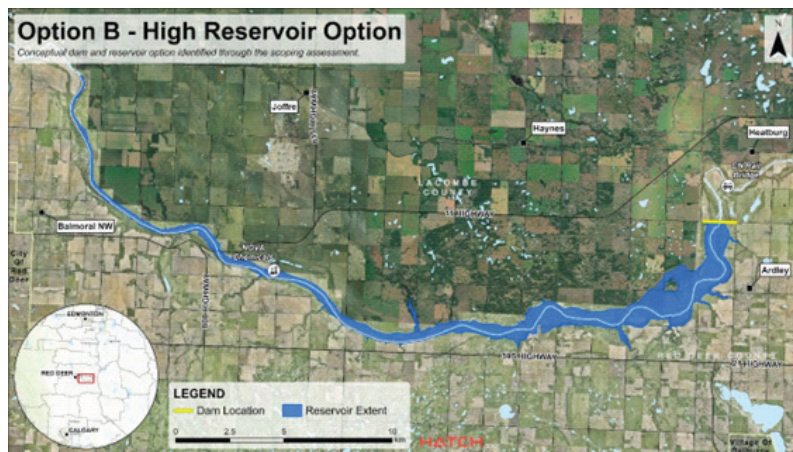


Options being considered

Three possible reservoir options are being evaluated:

- Low Reservoir option: Smaller reservoir with a smaller footprint
- High Reservoir option: Larger reservoir with more storage capacity
- Extended Reservoir option: Largest reservoir with the greatest storage but also more complexity

Each option has potential benefits and impacts, which are being carefully considered.



Get involved

Public input is an important part of this study. You can share your feedback through our online survey on our website until **July 30, 2026**.

We would like to know:

- Your thoughts on potential impacts (environmental, social, cultural, historical, economic).
- Local knowledge and insights of the study area.
- General sentiment.

You can also join us at an engagement session to share your feedback and learn more. Register for an engagement session:

- **Tuesday July 14, 6 to 8 pm**
Holiday Inn and Suites Red Deer South
- **Thursday July 16, 1:30 to 3:30 pm**
Online

The same information will be shared at both sessions. Please register on our website for the one that suits your schedule best.

Stay informed

To learn more about the study and subscribe to our mailing list for email updates, visit the study webpage at alberta.ca/ardley-reservoir-study-engagement

Contact the study team:
epa.ardley@gov.ab.ca

Share your input to help inform decisions about water storage in Alberta.
alberta.ca/ardley-reservoir-study-engagement

©2026 Government of Alberta | Published: June 2026 | Environment and Protected Areas

Classification: Public

