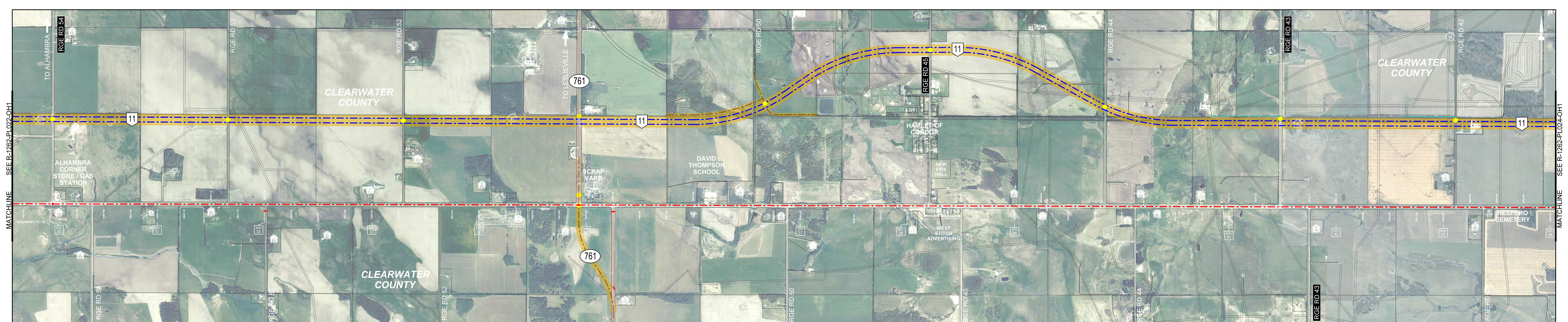


	LEGEND COUNTY BOUNDARY PROVINCIAL HIGHWAYS EXISTING HIGHWAY 11 CENTRELINE NEW HIGHWAY 11 TWINNING NEW CROSS STREET CENTRELINE NEW ACCESS ROAD CENTRELINE ACCESS/INTERSECTION CLOSURE ROAD RIGHT OF WAY REQUIREMENT POTENTIAL NEW BRIDGE		RGE RD XX GRAVEL RANGE ROAD RGE RD XX PAVED RANGE ROAD POTENTIAL LOCATION FOR ADDITIONAL RW ROUNDABOUT GRADE SEPARATED INTERCHANGE AT-GRADE INTERSECTION		UTILITIES TRANSMISSION TOWER TRANSMISSION LINE		LAND DEVELOPMENT CEMETERY SCHOOL BUSINESS INDUSTRY ACREAGE FARMSTEAD		<div style="border: 1px solid black; padding: 5px; text-align: center;"> THESE NOTES ARE KEY FACTORS TAKEN INTO CONSIDERATION IN DEVELOPING THE TWINNING CONCEPT </div>	<div style="border: 2px solid red; padding: 10px; display: inline-block;"> PRELIMINARY CONCEPT FOR DISCUSSION PURPOSES ONLY </div>	SCALE NTS 	NEW HIGHWAY ALIGNMENT HIGHWAY 11 TWINNING (HWY 22 TO TWP RD 390) FUNCTIONAL PLANNING STUDY CLEARWATER COUNTY		
	CONSULTANT CIW+ PROJECT NO. E00782A	PHOTOGRAPHY DATE JULY 2020	LOCATION HIGHWAY 11:10	DATE JUNE 10, 2022	FIGURE 4.2	DRAWING R-1262-PL022-OH1								

MATCHLINE SEE R-1262-PL023-OH1

MATCHLINE SEE R-1262-PL022-OH1



MATCHLINE SEE R-1262-PL024-OH1

CONSULTANT
CIMA+
 PROJECT NO. E00782A

LEGEND

	COUNTY BOUNDARY		NEW ACCESS ROAD CENTRELINE		RGE RD XX GRAVEL RANGE ROAD
	PROVINCIAL HIGHWAYS		ACCESS INTERSECTION CLOSURE		RGE RD XX PAVED RANGE ROAD
	EXISTING HIGHWAY 11 CENTRELINE		ROAD RIGHT OF WAY REQUIREMENT		POTENTIAL LOCATION FOR ADDITIONAL R/W
	NEW HIGHWAY 11 TWINNING		POTENTIAL NEW BRIDGE		ROUNDBOUT
	NEW CROSS STREET CENTRELINE				GRADE SEPARATED INTERCHANGE
					AT-GRADE INTERSECTION

UTILITIES

	TRANSMISSION TOWER		TRANSMISSION LINE
--	--------------------	--	-------------------

LAND DEVELOPMENT

	CEMETERY		INDUSTRY
	SCHOOL		ACREAGE
	BUSINESS		FARMSTEAD

THESE NOTES ARE KEY FACTORS TAKEN INTO CONSIDERATION IN DEVELOPING THE TWINNING CONCEPT

PRELIMINARY CONCEPT
 FOR DISCUSSION PURPOSES ONLY

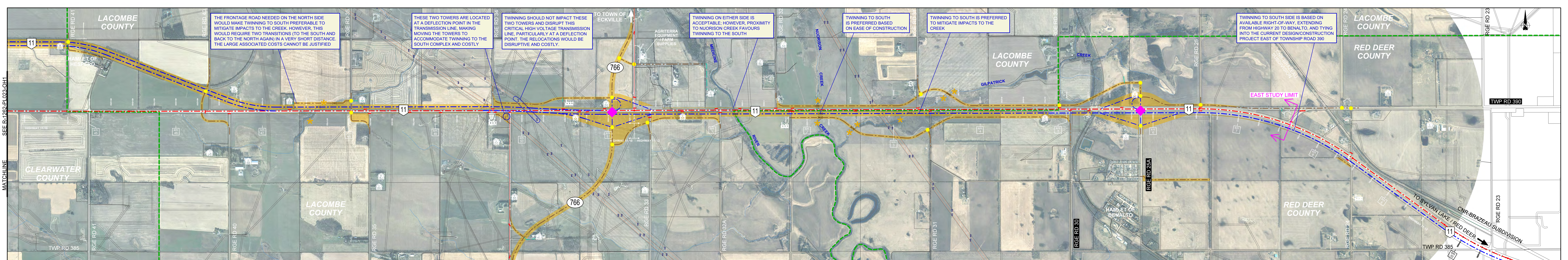


NEW HIGHWAY ALIGNMENT
 HIGHWAY 11 TWINNING (HWY 22 TO TWP RD 390)
 FUNCTIONAL PLANNING STUDY
 CLEARWATER COUNTY

PHOTOGRAPHY DATE: JULY 2020
 LOCATION: HIGHWAY 11:10
 DATE: JUNE 10, 2022
 FIGURE: 4.3
 DRAWING: R-1262-PL023-OH1

Alberta
 Transportation

SEE R-1262-PL023-OH1
MATCHLINE



THE FRONTAGE ROAD NEEDED ON THE NORTH SIDE WOULD MAKE TWINNING TO SOUTH PREFERABLE TO MITIGATE IMPACTS TO THE CREEK. HOWEVER, THIS WOULD REQUIRE TWO TRANSITIONS (TO THE SOUTH AND BACK TO THE NORTH AGAIN) IN A VERY SHORT DISTANCE. THE LARGE ASSOCIATED COSTS CANNOT BE JUSTIFIED

THESE TWO TOWERS ARE LOCATED AT A DEFLECTION POINT IN THE TRANSMISSION LINE, MAKING MOVING THE TOWERS TO ACCOMMODATE TWINNING TO THE SOUTH COMPLEX AND COSTLY

TWINNING SHOULD NOT IMPACT THESE TWO TOWERS AND DISRUPT THIS CRITICAL HIGH VOLTAGE TRANSMISSION LINE, PARTICULARLY AT A DEFLECTION POINT. THE RELOCATIONS WOULD BE DISRUPTIVE AND COSTLY.

TWINNING ON EITHER SIDE IS ACCEPTABLE; HOWEVER, PROXIMITY TO NUORISON CREEK FAVOURS TWINNING TO THE SOUTH

TWINNING TO SOUTH IS PREFERRED BASED ON EASE OF CONSTRUCTION

TWINNING TO SOUTH IS PREFERRED TO MITIGATE IMPACTS TO THE CREEK

TWINNING TO SOUTH SIDE IS BASED ON AVAILABLE RIGHT-OF-WAY, EXTENDING FROM HIGHWAY 20 TO BENALTO, AND TYING INTO THE CURRENT DESIGN/CONSTRUCTION PROJECT EAST OF TOWNSHIP ROAD 390

THESE NOTES ARE KEY FACTORS TAKEN INTO CONSIDERATION IN DEVELOPING THE TWINNING CONCEPT

PRELIMINARY CONCEPT
FOR DISCUSSION PURPOSES ONLY

SCALE
NTS
0 50 200 500
m

NEW HIGHWAY ALIGNMENT
HIGHWAY 11 TWINNING (HWY 22 TO TWP RD 390)
FUNCTIONAL PLANNING STUDY
CLEARWATER, LACOMBE, AND RED DEER COUNTIES

PHOTOGRAPHY DATE: JULY 2020 LOCATION: HIGHWAY 11:10 / 11:12 DATE: JUNE 10, 2022 FIGURE: 4.4 DRAWING: R-1262-PL024-OH1

CONSULTANT
CIM+
PROJECT NO. E00782A

- LEGEND**
- COUNTY BOUNDARY
 - PROVINCIAL HIGHWAYS
 - EXISTING HIGHWAY 11 CENTRELINE
 - NEW HIGHWAY 11 TWINNING
 - NEW CROSS STREET CENTRELINE
 - NEW ACCESS ROAD CENTRELINE
 - ACCESS/INTERSECTION CLOSURE
 - ROAD RIGHT OF WAY REQUIREMENT
 - POTENTIAL NEW BRIDGE

- RGE RD XX GRAVEL RANGE ROAD
PAVED RANGE ROAD
- POTENTIAL LOCATION FOR ADDITIONAL RW
 - ROUNDABOUT
 - GRADE SEPARATED INTERCHANGE
 - AT-GRADE INTERSECTION

- UTILITIES**
- TRANSMISSION TOWER
 - TRANSMISSION LINE
- LAND DEVELOPMENT**
- CEMETERY
 - SCHOOL
 - BUSINESS
 - INDUSTRY
 - ACREAGE
 - FARMSTEAD

Alberta
Transportation