

CONSULTANT 	<b>LEGEND</b> COUNTY BOUNDARY PROVINCIAL HIGHWAYS EXISTING HIGHWAY 11 CENTRELINE RECOMMENDED COUPLET ALIGNMENT NEW CROSS STREET CENTRELINE NEW ACCESS ROAD CENTRELINE ACCESS/INTERSECTION CLOSURE ROAD RIGHT OF WAY REQUIREMENT POTENTIAL NEW BRIDGE	RGE RD XX GRAVEL RANGE ROAD RGE RD XX PAVED RANGE ROAD POTENTIAL LOCATION FOR ADDITIONAL RW ROUNDABOUT GRADE SEPARATED INTERCHANGE AT-GRADE INTERSECTION	DIRECTION OF TRAVEL	<b>UTILITIES</b> TRANSMISSION TOWER TRANSMISSION LINE	<b>LAND DEVELOPMENT</b> CEMETERY SCHOOL BUSINESS INDUSTRY ACREAGE FARMSTEAD	THESE NOTES ARE KEY FACTORS TAKEN INTO CONSIDERATION IN DEVELOPING THE TWINNING CONCEPT	<b>PRELIMINARY CONCEPT</b> FOR DISCUSSION PURPOSES ONLY	SCALE NTS 0 50 200 500 m	<b>NORTH COUPLET CONCEPT</b> HIGHWAY 11 TWINNING (HWY 22 TO TWP RD 390) FUNCTIONAL PLANNING STUDY CLEARWATER COUNTY				
									PROJECT NO. E00782A	PHOTOGRAPHY DATE JULY 2020	LOCATION HIGHWAY 11:10	DATE JUNE 10, 2022	

MATCHLINE SEE R-1262-PL019-OH1



MATCHLINE SEE R-1262-PL021-OH1

CONSULTANT  
**CIMA+**  
PROJECT NO. E00782A

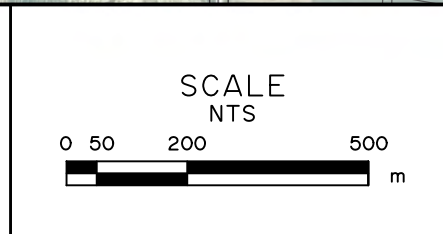
LEGEND	
	COUNTY BOUNDARY
	PROVINCIAL HIGHWAYS
	EXISTING HIGHWAY 11 CENTRELINE
	RECOMMENDED COUPLET ALIGNMENT
	NEW CROSS STREET CENTRELINE
	NEW ACCESS ROAD CENTRELINE
	ACCESS/INTERSECTION CLOSURE
	ROAD RIGHT OF WAY REQUIREMENT
	POTENTIAL NEW BRIDGE
	RGE RD XX GRAVEL RANGE ROAD
	RGE RD XX PAVED RANGE ROAD
	POTENTIAL LOCATION FOR ADDITIONAL RW
	ROUNDBOUT
	GRADE SEPARATED INTERCHANGE
	AT-GRADE INTERSECTION

UTILITIES	
	TRANSMISSION TOWER
	TRANSMISSION LINE

LAND DEVELOPMENT	
	CEMETERY
	SCHOOL
	BUSINESS
	INDUSTRY
	ACREAGE
	FARMSTEAD

THESE NOTES ARE KEY FACTORS TAKEN INTO CONSIDERATION IN DEVELOPING THE TWINNING CONCEPT

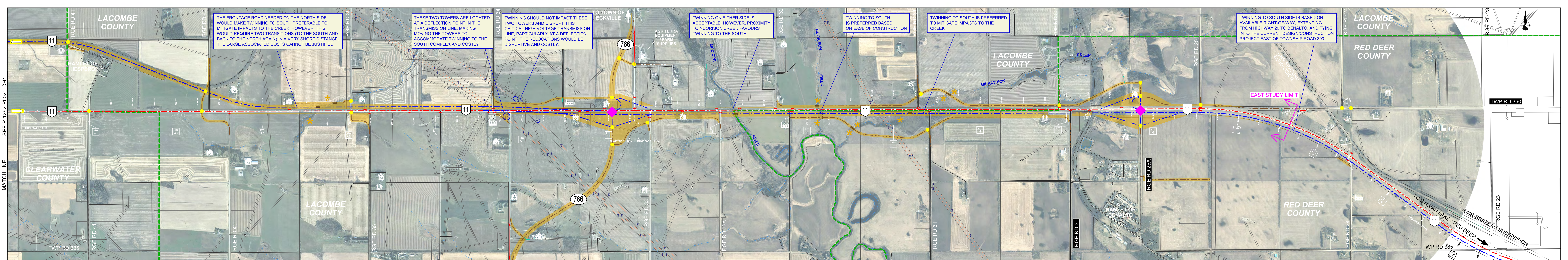
**PRELIMINARY CONCEPT**  
FOR DISCUSSION PURPOSES ONLY



**NORTH COUPLET CONCEPT**  
HIGHWAY 11 TWINNING (HWY 22 TO TWP RD 390)  
FUNCTIONAL PLANNING STUDY  
CLEARWATER COUNTY

Alberta Transportation  
PHOTOGRAPHY DATE: JULY 2020  
LOCATION: HIGHWAY 11:10  
DATE: JUNE 10, 2022  
FIGURE: 3.6  
DRAWING: R-1262-PL020-OH1

SEE R-1262-PL020-OH1  
MATCHLINE



THE FRONTAGE ROAD NEEDED ON THE NORTH SIDE WOULD MAKE TWINNING TO SOUTH PREFERABLE TO MITIGATE IMPACTS TO THE CREEK. HOWEVER, THIS WOULD REQUIRE TWO TRANSITIONS (TO THE SOUTH AND BACK TO THE NORTH AGAIN) IN A VERY SHORT DISTANCE. THE LARGE ASSOCIATED COSTS CANNOT BE JUSTIFIED

THESE TWO TOWERS ARE LOCATED AT A DEFLECTION POINT IN THE TRANSMISSION LINE, MAKING MOVING THE TOWERS TO ACCOMMODATE TWINNING TO THE SOUTH COMPLEX AND COSTLY

TWINNING SHOULD NOT IMPACT THESE TWO TOWERS AND DISRUPT THIS CRITICAL HIGH VOLTAGE TRANSMISSION LINE, PARTICULARLY AT A DEFLECTION POINT. THE RELOCATIONS WOULD BE DISRUPTIVE AND COSTLY.

TWINNING ON EITHER SIDE IS ACCEPTABLE; HOWEVER, PROXIMITY TO NUORISON CREEK FAVOURS TWINNING TO THE SOUTH

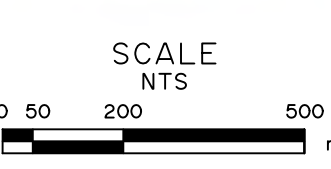
TWINNING TO SOUTH IS PREFERRED BASED ON EASE OF CONSTRUCTION

TWINNING TO SOUTH IS PREFERRED TO MITIGATE IMPACTS TO THE CREEK

TWINNING TO SOUTH SIDE IS BASED ON AVAILABLE RIGHT-OF-WAY, EXTENDING FROM HIGHWAY 20 TO BENALTO, AND TYING INTO THE CURRENT DESIGN/CONSTRUCTION PROJECT EAST OF TOWNSHIP ROAD 390

THESE NOTES ARE KEY FACTORS TAKEN INTO CONSIDERATION IN DEVELOPING THE TWINNING CONCEPT

**PRELIMINARY CONCEPT**  
FOR DISCUSSION PURPOSES ONLY



**NORTH COUPLET CONCEPT**  
HIGHWAY 11 TWINNING (HWY 22 TO TWP RD 390)  
FUNCTIONAL PLANNING STUDY  
CLEARWATER, LACOMBE, AND RED DEER COUNTIES

Alberta  
Transportation

CONSULTANT  
**CIM+**  
PROJECT NO. E00782A

LEGEND		UTILITIES		LAND DEVELOPMENT	
	COUNTY BOUNDARY		TRANSMISSION TOWER		CEMETERY
	PROVINCIAL HIGHWAYS		TRANSMISSION LINE		INDUSTRY
	EXISTING HIGHWAY 11 CENTRELINE				SCHOOL
	RECOMMENDED COUPLET ALIGNMENT				BUSINESS
	NEW ACCESS ROAD CENTRELINE				FARMSTEAD
	ACCESS/INTERSECTION CLOSURE				
	ROAD RIGHT OF WAY REQUIREMENT				
	NEW CROSS STREET CENTRELINE				
	POTENTIAL NEW BRIDGE				
	RGE RD XX GRAVEL RANGE ROAD				
	RGE RD XX PAVED RANGE ROAD				
	POTENTIAL LOCATION FOR ADDITIONAL RW				
	ROUNDABOUT				
	GRADE SEPARATED INTERCHANGE				
	AT-GRADE INTERSECTION				

PHOTOGRAPHY DATE: JULY 2020  
LOCATION: HIGHWAY 11:10 / 11:12  
DATE: JUNE 10, 2022  
FIGURE: 3.7  
DRAWING: R-1262-PL021-OH1