

CONSULTANT  
**CIM+**  
 PROJECT NO. E00782A

**LEGEND**  
 --- EXISTING HIGHWAY 11 CENTRELINE  
 --- PROVINCIAL HIGHWAYS  
 --- COUNTY BOUNDARY  
 --- PLANNING BOUNDARY  
 --- CANADIAN NATIONAL (CN) RAILWAY

**RGE RD XX**  
 GRAVEL RANGE ROAD  
**RGE RD XX**  
 PAVED RANGE ROAD  
 BRIDGE CULVERT  
 BRIDGE

**ENVIRONMENTAL**  
 MINERAL WETLAND  
 DUGOUT  
 PEATLAND  
 POTENTIAL WETLAND  
 WATERCOURSE CROSSING  
 ANIMAL-VEHICLE COLLISIONS CLUSTER  
 WATERCOURSE

**HISTORICAL**  
 POTENTIAL HRIA TARGET AREAS  
 TRADITIONAL USE SITE

**GEOTECHNICAL**  
 ORGANIC DEPOSITS

**UTILITIES**  
 GAS PIPELINE  
 OIL PIPELINE  
 TELUS TRENCH  
 LVP / HVP PIPELINE  
 TRANSMISSION LINE  
 GAS CO-OP PIPELINE  
 AERIAL CABLE  
 POWER LINE  
 OVERHEAD POWER LINE - OWNER UNIDENTIFIED

TRANSMISSION LINE  
 FIBRE OPTIC LINE  
 POWER POLE  
 STREET LIGHT  
 TRANSMISSION TOWER

WELLHEAD (ACTIVE)  
 WELLHEAD (SUSPENDED)  
 WELLHEAD (ABANDONED)

**LAND DEVELOPMENT**  
 CEMETERY  
 SCHOOL  
 BUSINESS  
 INDUSTRY  
 ACREAGE  
 FARMSTEAD



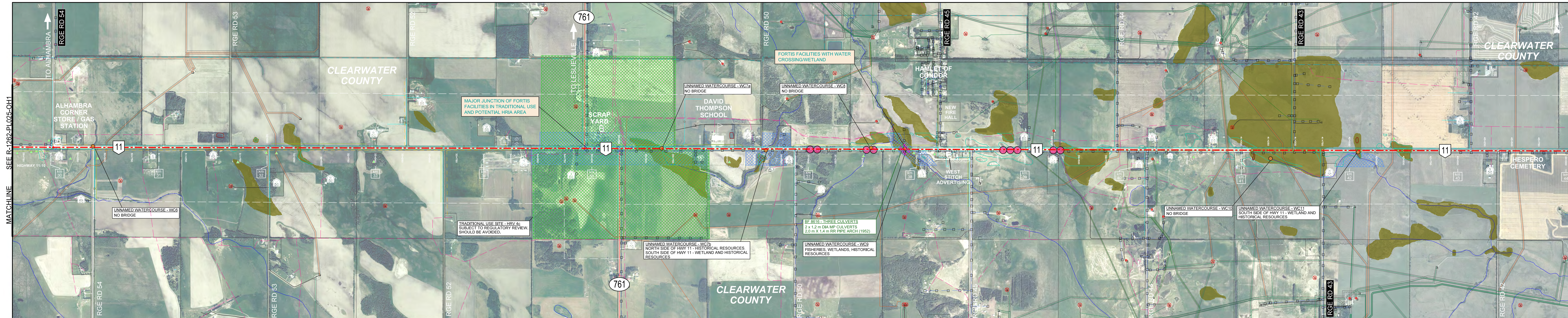
**EXISTING CONDITIONS & CONSTRAINTS**  
 HIGHWAY 11 TWINNING (HWY 22 TO TWP RD 390)  
 FUNCTIONAL PLANNING STUDY  
 CLEARWATER COUNTY

|                               |                           |                       |                |                             |
|-------------------------------|---------------------------|-----------------------|----------------|-----------------------------|
| PHOTOGRAPHY DATE<br>JULY 2020 | LOCATION<br>HIGHWAY 11:10 | DATE<br>JUNE 10, 2022 | FIGURE<br>1.12 | DRAWING<br>R-1262-PL025-OH1 |
|-------------------------------|---------------------------|-----------------------|----------------|-----------------------------|

**Alberta**  
 Transportation

MATCHLINE SEE R-1262-PL026-OH1

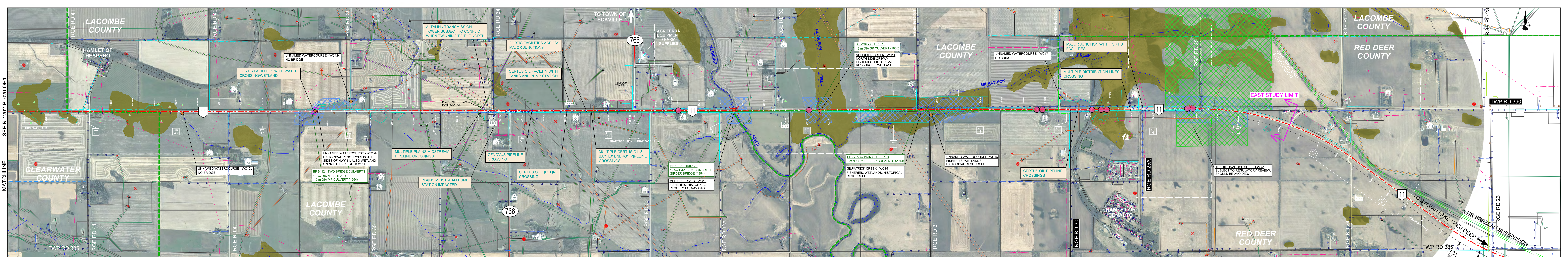
SEE R-1262-PL025-OH1  
MATCHLINE



MATCHLINE  
SEE R-1262-PL027-OH1

|  |  |  |  |   |   |  |   |  |   |  |   |  |
|--|--|--|--|---|---|--|---|--|---|--|---|--|
| <p>CONSULTANT</p> <p>PROJECT NO. E00782A</p> | <p><b>LEGEND</b></p> <ul style="list-style-type: none"> <li>EXISTING HIGHWAY 11 CENTRELINE</li> <li>PROVINCIAL HIGHWAYS</li> <li>COUNTY BOUNDARY</li> <li>PLANNING BOUNDARY</li> <li>CANADIAN NATIONAL (CN) RAILWAY</li> </ul> | <p><b>RGE RD XX</b><br/><b>RGE RD XX</b></p> <ul style="list-style-type: none"> <li>GRAVEL RANGE ROAD</li> <li>PAVED RANGE ROAD</li> <li>BRIDGE CULVERT</li> <li>BRIDGE</li> </ul> | <p><b>ENVIRONMENTAL</b></p> <ul style="list-style-type: none"> <li>MINERAL WETLAND</li> <li>DUGOUT</li> <li>PEATLAND</li> <li>POTENTIAL WETLAND</li> <li>WATERCOURSE CROSSING</li> <li>ANIMAL-VEHICLE COLLISIONS CLUSTER</li> <li>WATERCOURSE</li> </ul> | <p><b>HISTORICAL</b></p> <ul style="list-style-type: none"> <li>POTENTIAL HRV TARGET AREAS</li> <li>TRADITIONAL USE SITE</li> </ul> | <p><b>GEOTECHNICAL</b></p> <ul style="list-style-type: none"> <li>ORGANIC DEPOSITS</li> </ul> | <p><b>UTILITIES</b></p> <ul style="list-style-type: none"> <li>GAS PIPELINE</li> <li>OIL PIPELINE</li> <li>TELUS TRENCH</li> <li>LVP / HVP PIPELINE</li> <li>TRANSMISSION LINE</li> <li>GAS CO-OP PIPELINE</li> <li>AERIAL CABLE</li> <li>POWER LINE</li> <li>OVERHEAD POWER LINE - OWNER UNIDENTIFIED</li> <li>TRANSMISSION LINE</li> <li>FIBRE OPTIC LINE</li> </ul> | <p><b>LAND DEVELOPMENT</b></p> <ul style="list-style-type: none"> <li>CEMETERY</li> <li>SCHOOL</li> <li>BUSINESS</li> <li>INDUSTRY</li> <li>ACREAGE</li> <li>FARMSTEAD</li> </ul> | <p><b>POWER</b></p> <ul style="list-style-type: none"> <li>POWER POLE</li> <li>STREET LIGHT</li> <li>TRANSMISSION TOWER</li> </ul> | <p><b>WELLHEADS</b></p> <ul style="list-style-type: none"> <li>WELLHEAD (ACTIVE)</li> <li>WELLHEAD (SUSPENDED)</li> <li>WELLHEAD (ABANDONED)</li> </ul> | <p><b>SCALE</b></p> <p>NTS</p> <p>0 50 200 500 m</p> | <p><b>EXISTING CONDITIONS &amp; CONSTRAINTS</b></p> <p>HIGHWAY 11 TWINNING (HWY 22 TO TWP RD 390)</p> <p>FUNCTIONAL PLANNING STUDY</p> <p>CLEARWATER COUNTY</p> |  |
|  |  |  |  |   |   |  |   |  |   |  |   |  |

SEE R-1262-PL026-OH1  
MATCHLINE



|  |  |  |   |  |   |   |   |   |  |  |  |
|--|--|--|---|--|---|---|---|---|--|--|--|
| <p>CONSULTANT</p> <p>PROJECT NO. E00782A</p> | <p><b>LEGEND</b></p> <ul style="list-style-type: none"> <li><span style="color: red;">—</span> EXISTING HIGHWAY 11 CENTRELINE</li> <li><span style="color: red;">—</span> PROVINCIAL HIGHWAYS</li> <li><span style="color: green;">—</span> COUNTY BOUNDARY</li> <li><span style="color: blue;">—</span> PLANNING BOUNDARY</li> <li><span style="color: green;">—</span> CANADIAN NATIONAL (CN) RAILWAY</li> </ul> | <p><b>ENVIRONMENTAL</b></p> <ul style="list-style-type: none"> <li><span style="color: blue;">—</span> MINERAL WETLAND</li> <li><span style="color: orange;">—</span> DUGOUT</li> <li><span style="color: yellow;">—</span> PEATLAND</li> <li><span style="color: blue;">—</span> WATERCOURSE</li> </ul> | <p><b>HISTORICAL</b></p> <ul style="list-style-type: none"> <li><span style="color: blue;">—</span> POTENTIAL HRIA TARGET AREAS</li> <li><span style="color: green;">—</span> TRADITIONAL USE SITE</li> </ul> | <p><b>GEOTECHNICAL</b></p> <ul style="list-style-type: none"> <li><span style="color: brown;">—</span> ORGANIC DEPOSITS</li> </ul> | <p><b>UTILITIES</b></p> <ul style="list-style-type: none"> <li><span style="color: orange;">—</span> GAS PIPELINE</li> <li><span style="color: green;">—</span> OIL PIPELINE</li> <li><span style="color: blue;">—</span> TELUS TRENCH</li> <li><span style="color: purple;">—</span> LVP / HVP PIPELINE</li> <li><span style="color: red;">—</span> TRANSMISSION LINE</li> </ul> | <p><b>TRANSMISSION</b></p> <ul style="list-style-type: none"> <li><span style="color: red;">—</span> GAS CO-OP PIPELINE</li> <li><span style="color: blue;">—</span> AERIAL CABLE</li> <li><span style="color: blue;">—</span> POWER LINE</li> <li><span style="color: green;">—</span> OVERHEAD POWER LINE - OWNER UNIDENTIFIED</li> </ul> | <p><b>LAND DEVELOPMENT</b></p> <ul style="list-style-type: none"> <li><span style="color: blue;">—</span> CEMETERY</li> <li><span style="color: blue;">—</span> SCHOOL</li> <li><span style="color: blue;">—</span> BUSINESS</li> <li><span style="color: blue;">—</span> INDUSTRY</li> <li><span style="color: blue;">—</span> ACREAGE</li> <li><span style="color: blue;">—</span> FARMSTEAD</li> </ul> | <p><b>WATER</b></p> <ul style="list-style-type: none"> <li><span style="color: blue;">—</span> WELLHEAD (ACTIVE)</li> <li><span style="color: red;">—</span> WELLHEAD (SUSPENDED)</li> <li><span style="color: red;">—</span> WELLHEAD (ABANDONED)</li> </ul> | <p><b>SCALE</b></p> <p>NTS</p> <p>0 50 200 500 m</p> | <p><b>EXISTING CONDITIONS &amp; CONSTRAINTS</b></p> <p>HIGHWAY 11 TWINNING (HWY 22 TO TWP RD 390)</p> <p>FUNCTIONAL PLANNING STUDY</p> <p>CLEARWATER, LACOMBE, AND RED DEER COUNTIES</p> <p>PHOTOGRAPHY DATE: JULY 2020    LOCATION: HIGHWAY 11:10 / 11:12    DATE: JUNE 10, 2022    FIGURE: 1.14    DRAWING: R-1262-PL027-OH1</p> |  |
|  |  |  |   |  |   |   |   |   |  |  |  |