

Welcome

Intersection #990 (Highway 27/22/584) Roundabout
and Highway 27:06 Rehabilitation Project

Public Information Session
June 28, 2022
3:00 – 8:00pm

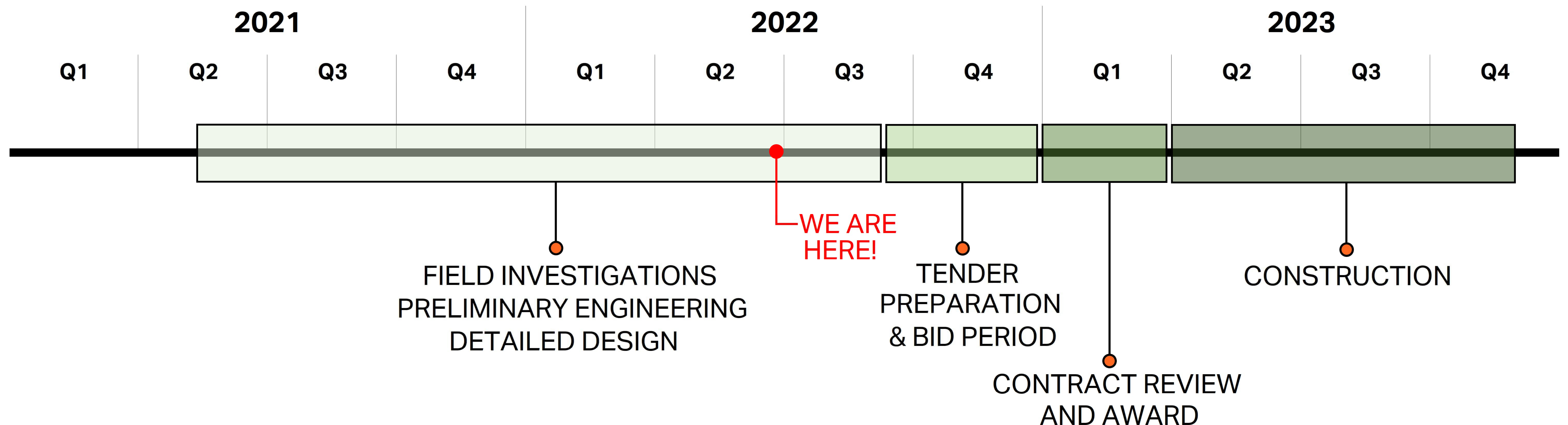
TOWN OF
SUNDRE

WELCOMES YOU

Please review the display boards and let our project team know if you have any questions.

A brief presentation will be held at 5:30pm.

Project Timeline



Next Steps

- July to December 2022 – Finalize design, prepare contract documents, contract bid period.
- January to March 2023 – Bid reviews, contract award.
- April 2023 – Anticipated construction start.
- November 2023 – Anticipated construction completion.

Hwy 27 Rehabilitation Project Scope Overview:

- Pavement rehabilitation from 7 Street W to 11 Street E (Asphalt mill and inlay)
- Replacement of temporary mini-roundabouts with permanent mini-roundabout construction - See separate mini-roundabout boards for details.
- Intersection improvements at 1 Street W and Highway 760.
- Curb and sidewalk replacements between 1 Street W to 4 Street W.

1 Street W Scope Includes:

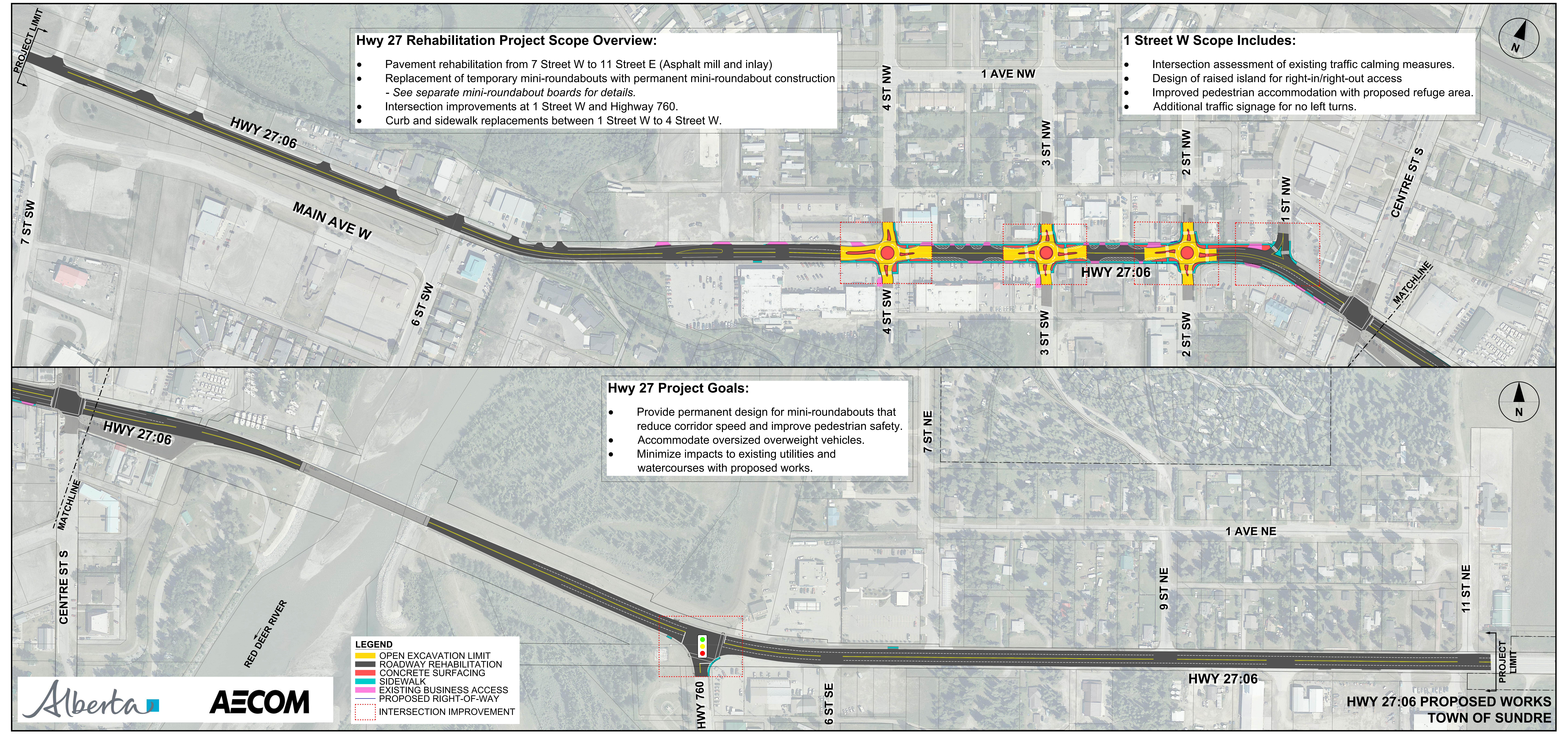
- Intersection assessment of existing traffic calming measures.
- Design of raised island for right-in/right-out access
- Improved pedestrian accommodation with proposed refuge area.
- Additional traffic signage for no left turns.

Hwy 27 Project Goals:

- Provide permanent design for mini-roundabouts that reduce corridor speed and improve pedestrian safety.
- Accommodate oversized overweight vehicles.
- Minimize impacts to existing utilities and watercourses with proposed works.

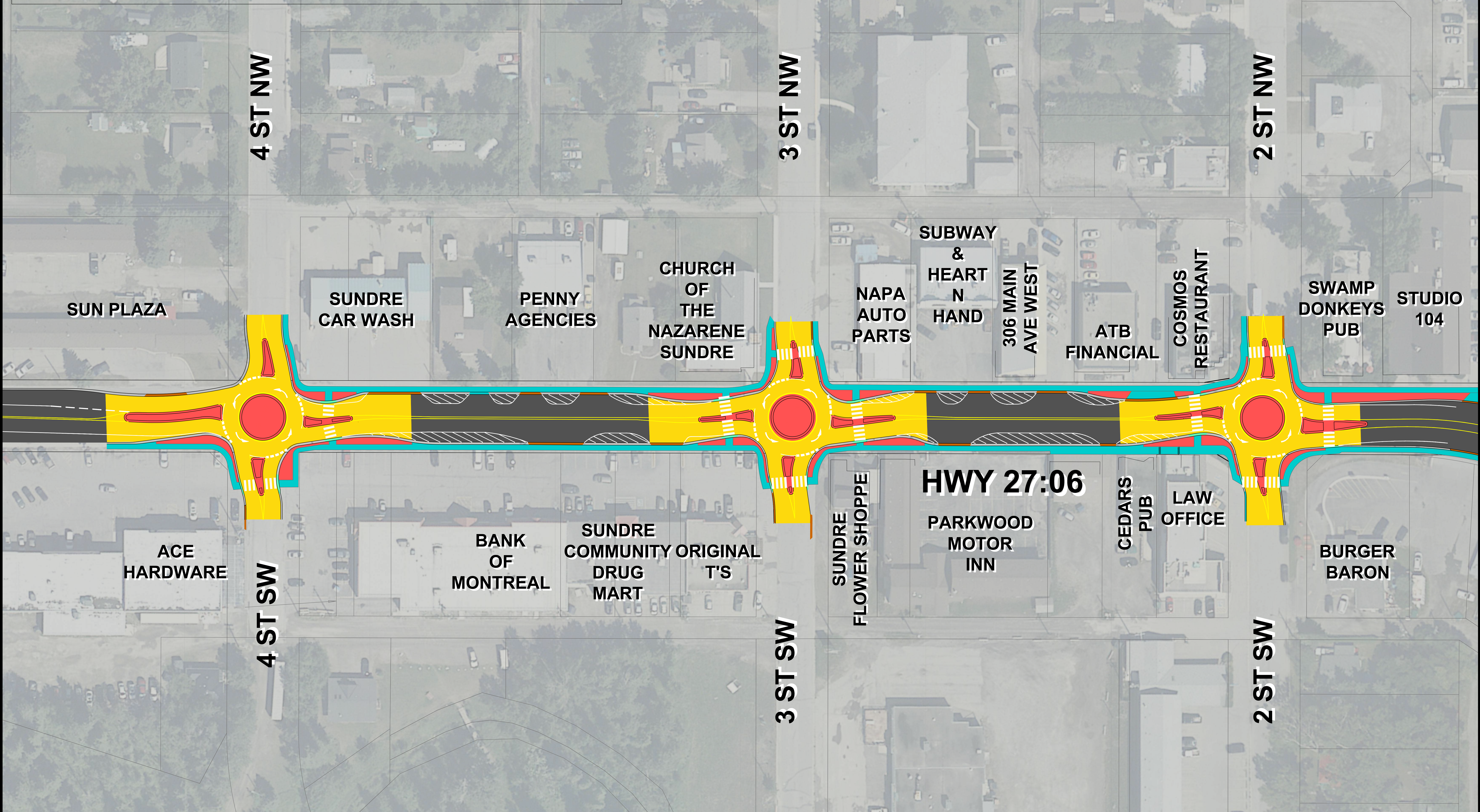
LEGEND

- OPEN EXCAVATION LIMIT
- ROADWAY REHABILITATION
- CONCRETE SURFACING
- SIDEWALK
- EXISTING BUSINESS ACCESS
- PROPOSED RIGHT-OF-WAY
- INTERSECTION IMPROVEMENT

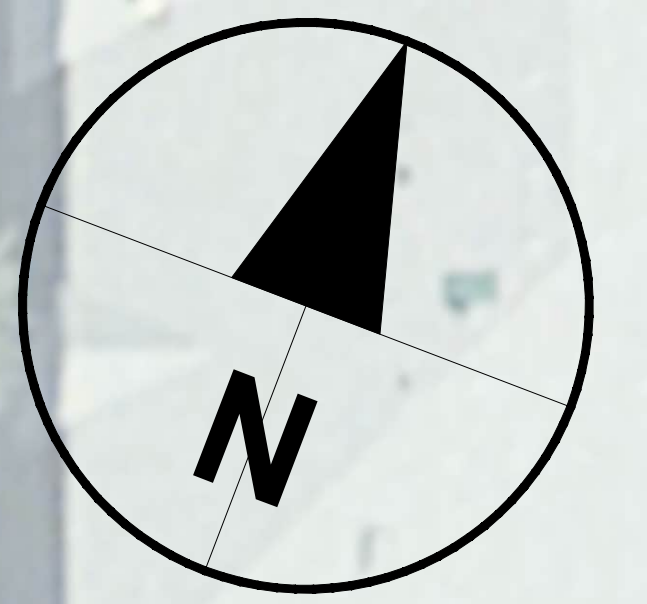


Why are upgrades required?

The roundabouts installed in 2017 were part of a pilot project coordinated by Alberta Transportation with the purpose of improving the flow of traffic along Highway 27 through downtown Sundre. Scheduled Highway 27 pavement improvements provided opportunity to upgrade these intersections with permanent infrastructure and to improve pedestrian separation and safety.



LEGEND	
	OPEN EXCAVATION LIMIT
	ROADWAY REHABILITATION
	CONCRETE SURFACING
	SIDEWALK



MINI-ROUNDAABOUT TREATMENT

- Coloured concrete (depicted).

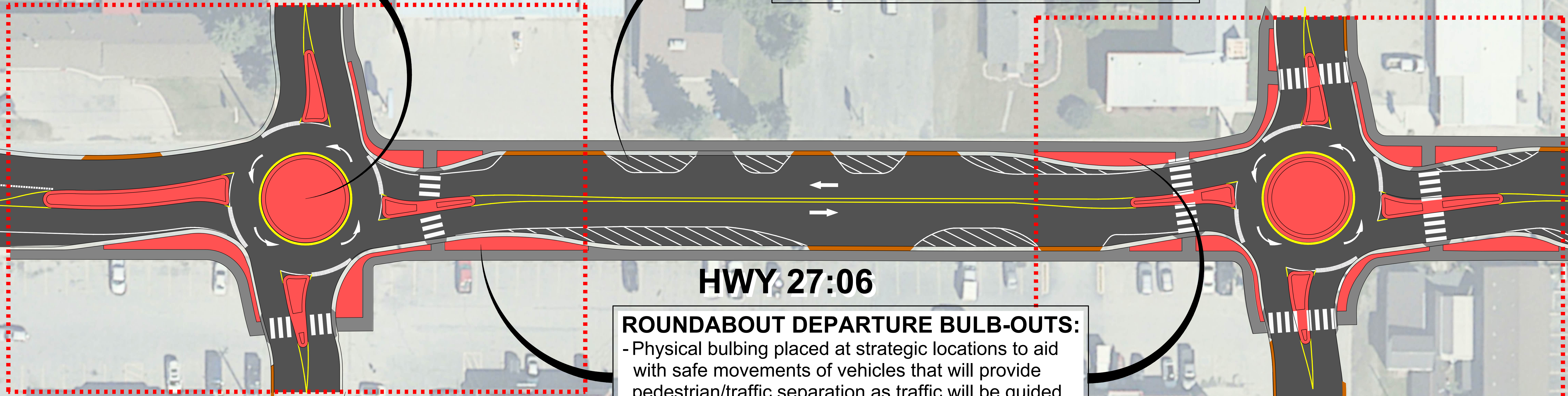
4 ST NW



MID-BLOCK:

- Coloured / Textured Pavement.
- Community Painted Pavement.
- Seasonal opportunity for snow clearing storage.
- Indicates area is not for normal vehicle travel.
- Provides visual narrowing of roadway.

3 ST NW



OPEN EXCAVATION CONSTRUCTION LIMIT

OPEN EXCAVATION CONSTRUCTION LIMIT

HWY 27:06

ROUNDABOUT DEPARTURE BULB-OUTS:

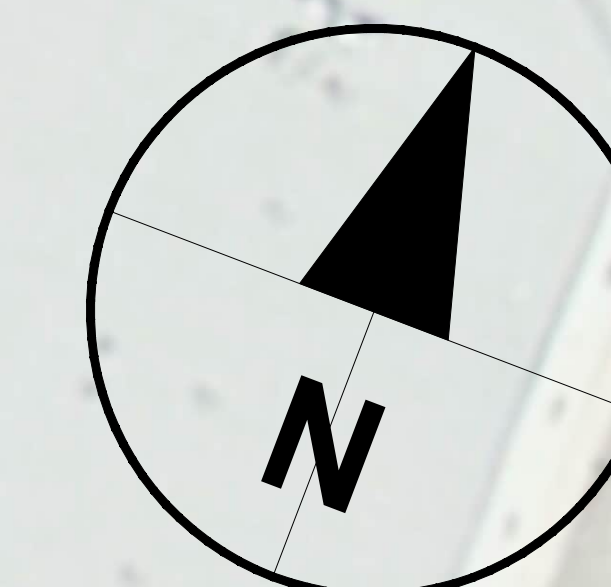
- Physical bulbing placed at strategic locations to aid with safe movements of vehicles that will provide pedestrian/traffic separation as traffic will be guided away from sidewalks.

MINI ROUNDABOUT DESIGN IMPROVEMENTS

- Traffic calming introduced for slower speeds.
- Entry and exit bulb-outs aid with separation between vehicles and pedestrians.
- Improve visibility of pedestrians at designated locations along with reduced crossing distance.
- Curb bulbing to be distinctive from sidewalk to maintain vehicle buffer.
- Improvements to illumination and installation of new pedestrian crossing flashers to supplement the existing pedestrian crossing flashers.

4 ST SW

3 ST SW



MID-BLOCK:

- Coloured / Textured Pavement.
- Community Painted Pavement.
- Seasonal opportunity for snow clearing storage.
- Indicates area is not for normal vehicle travel.
- Provides visual narrowing of roadway.



MINI-ROUNDBABOUT TREATMENT

- Coloured concrete (depicted).

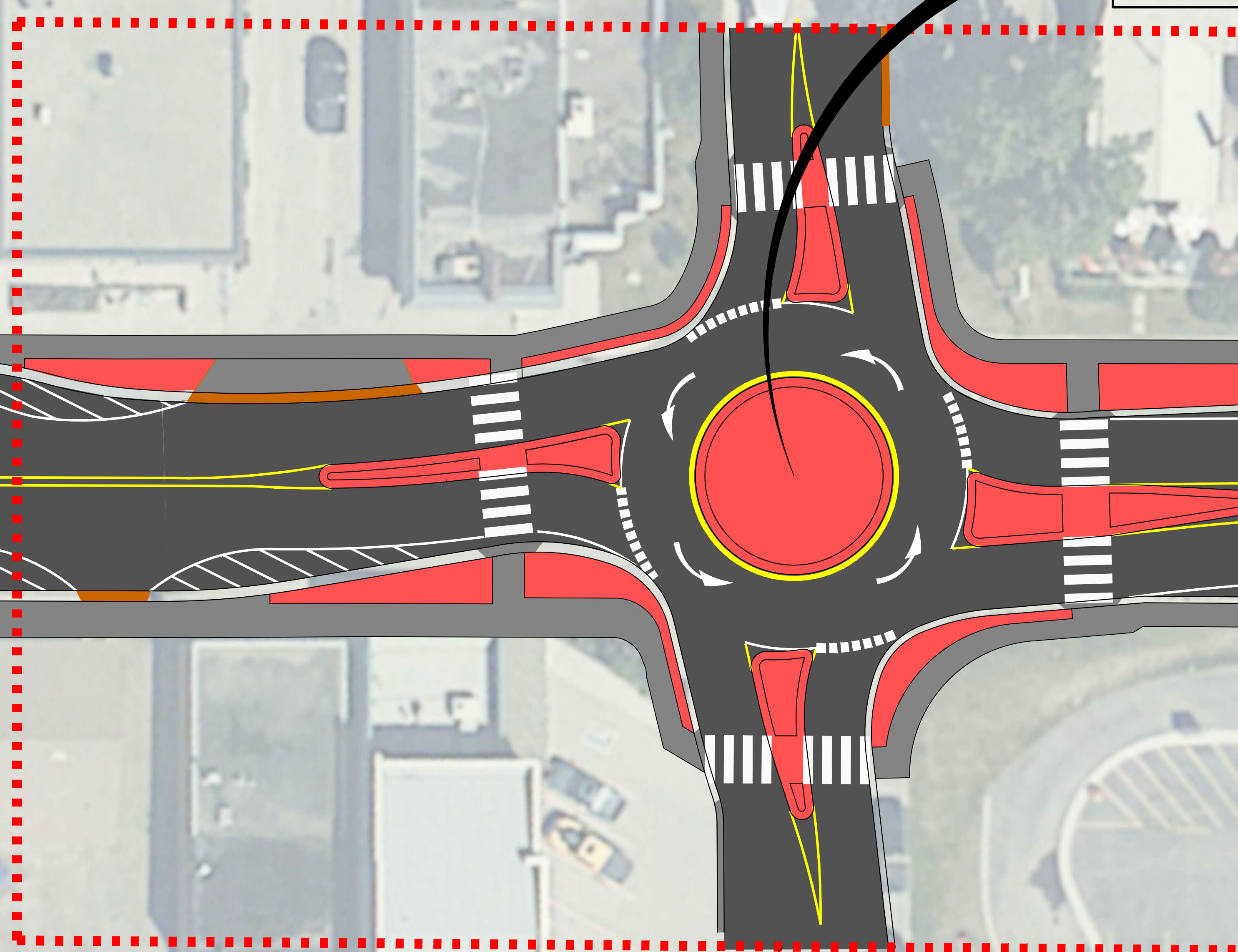
1 ST NW

2 ST NW

1st STREET NW DESIGN IMPROVEMENTS

- Pork chop island for channelization of right in/right out.
- Provides for pedestrian refuge.
- Curb radii improvement.
- 'Emergency Vehicles Only' left turn signed to be installed.

HWY 27:06



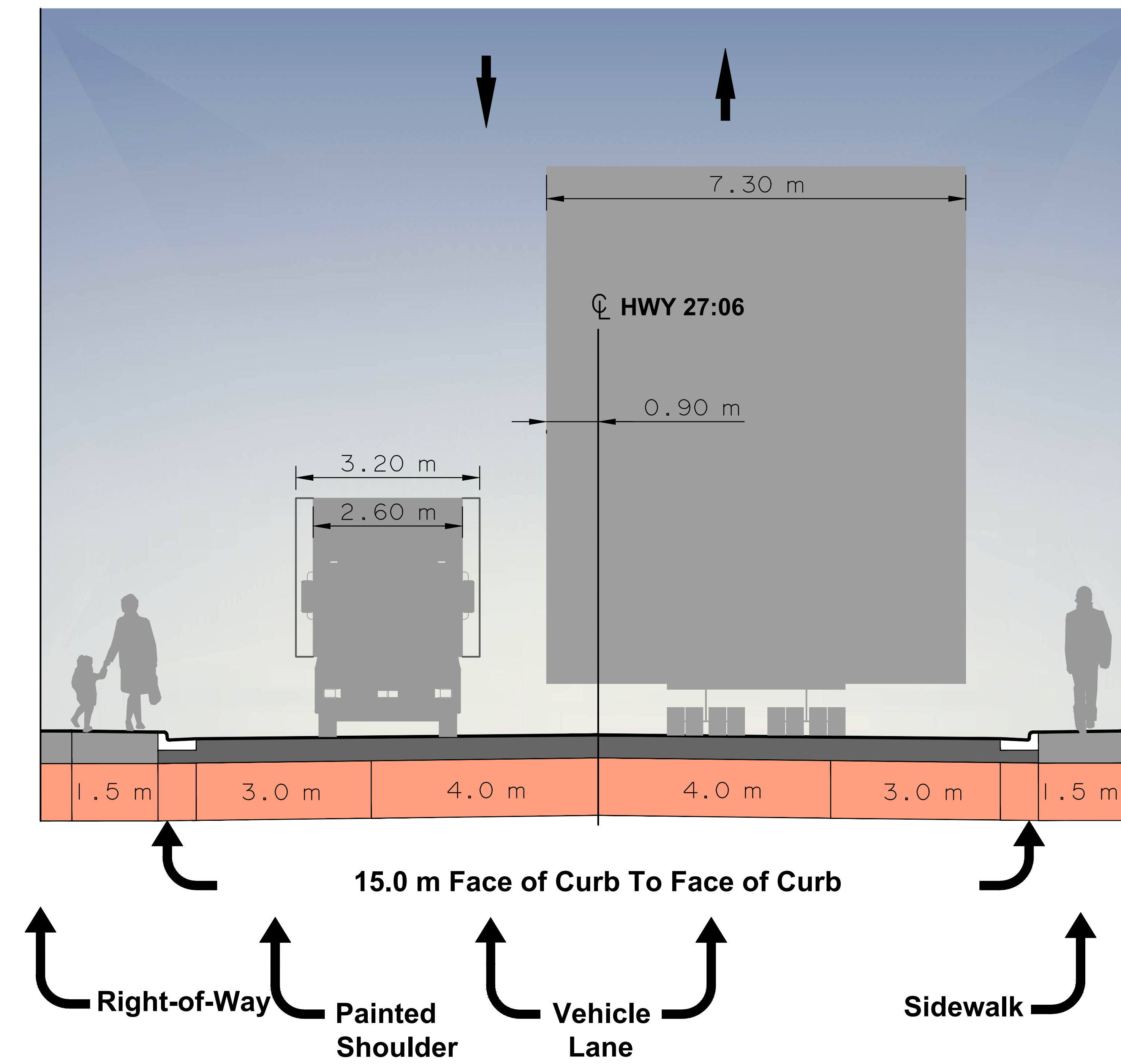
OPEN EXCAVATION CONSTRUCTION LIMIT

2 ST SW

MINI ROUNDABOUT DESIGN IMPROVEMENTS

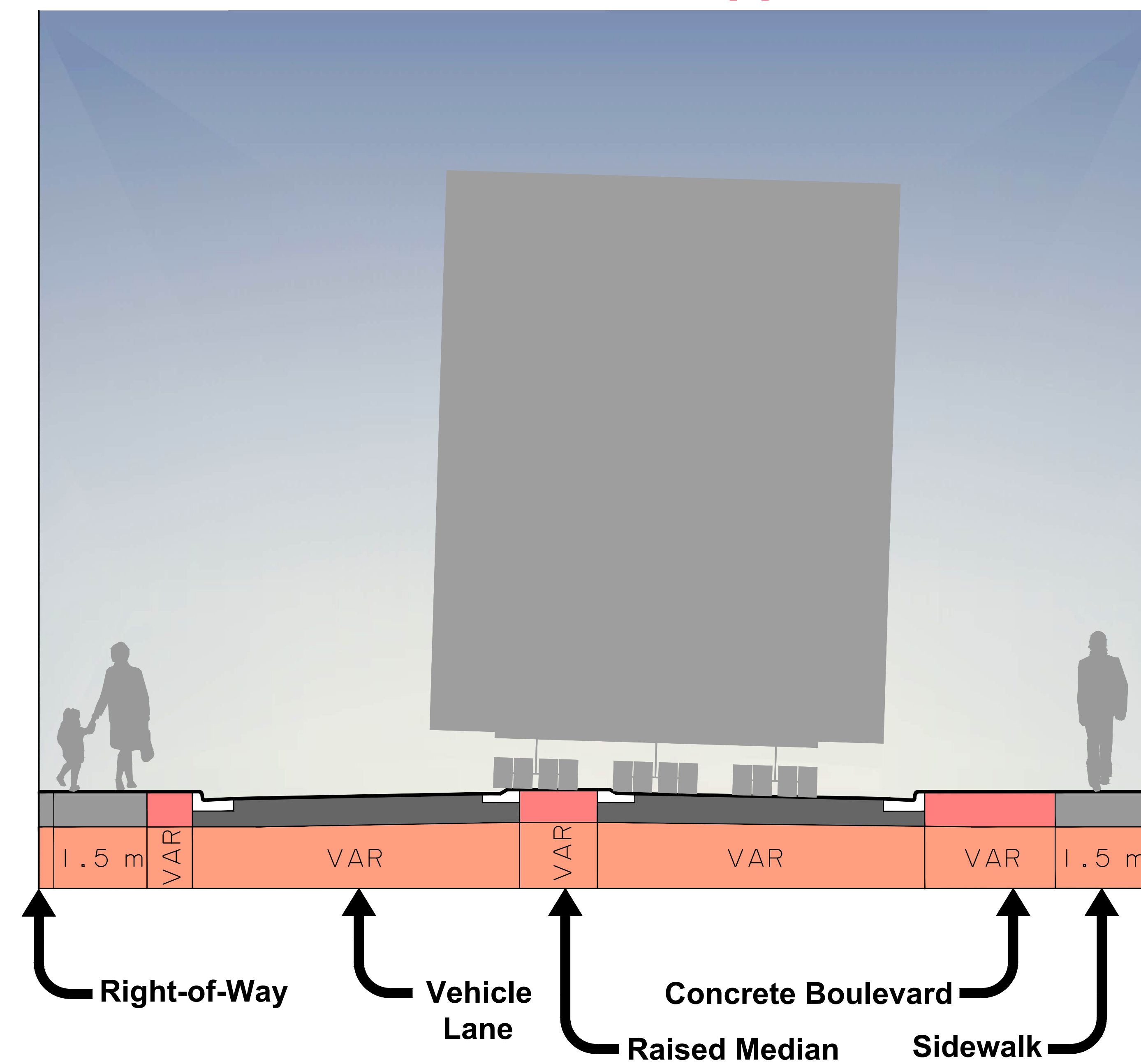
- Traffic calming introduced for slower speeds.
- Entry and exit bulb-outs aid with separation between vehicles and pedestrians.
- Improve visibility of pedestrians at designated locations along with reduced crossing distance.
- Curb bulbing to be distinctive from sidewalk to maintain vehicle buffer.
- Improvements to illumination and installation of new pedestrian crossing flashers to supplement the existing pedestrian crossing flashers.

Midblock Section*

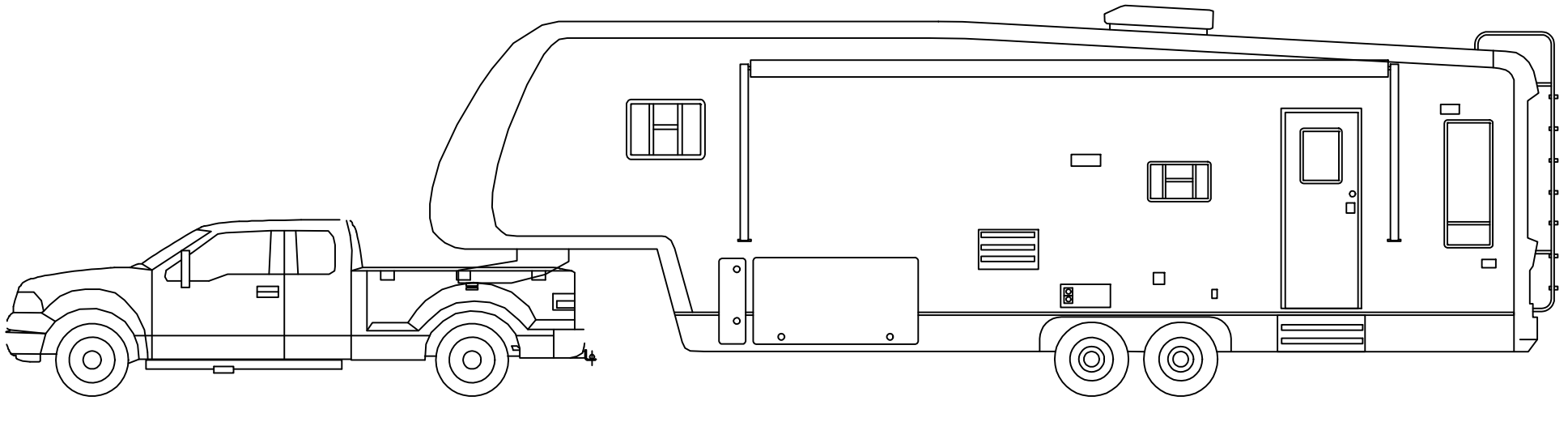
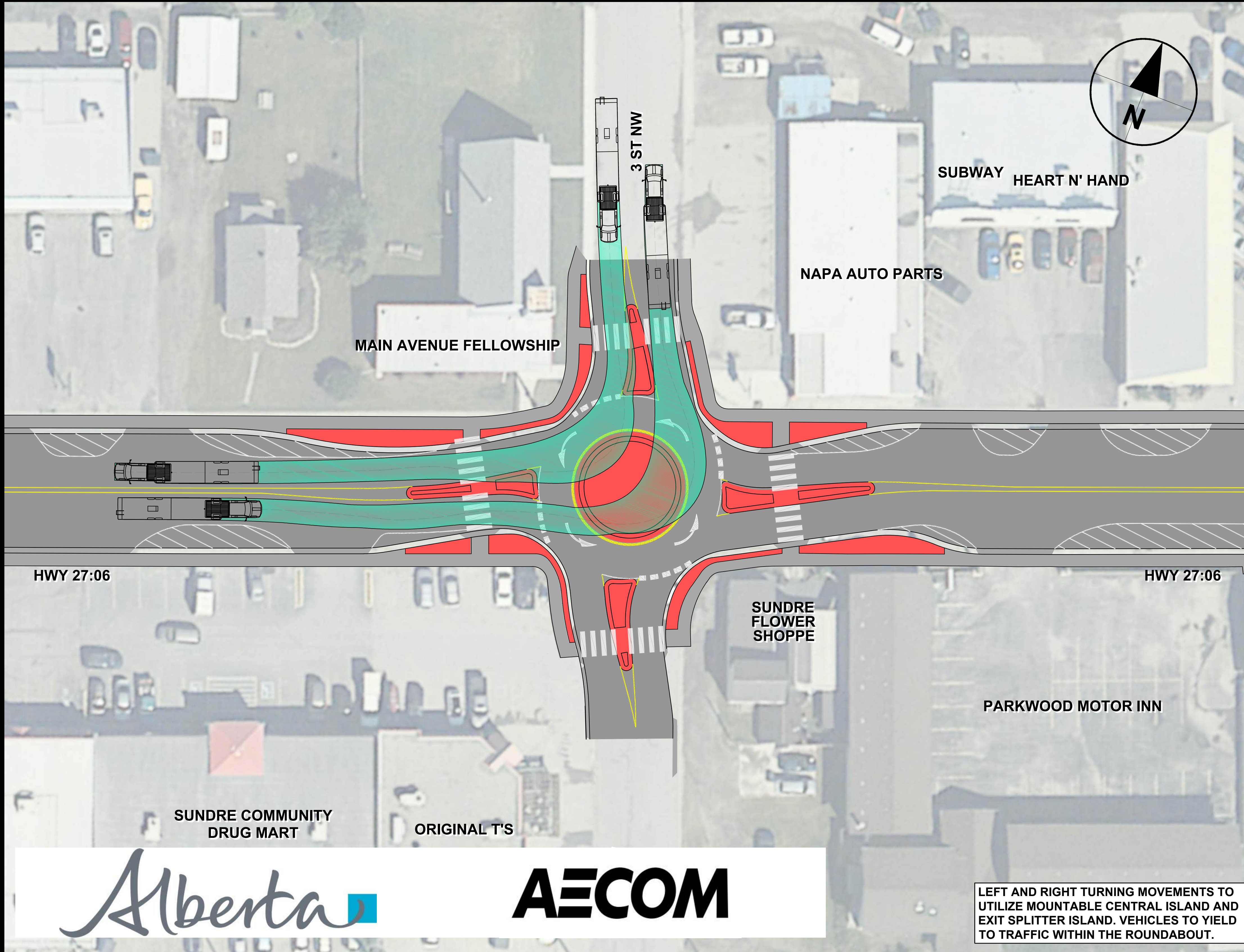
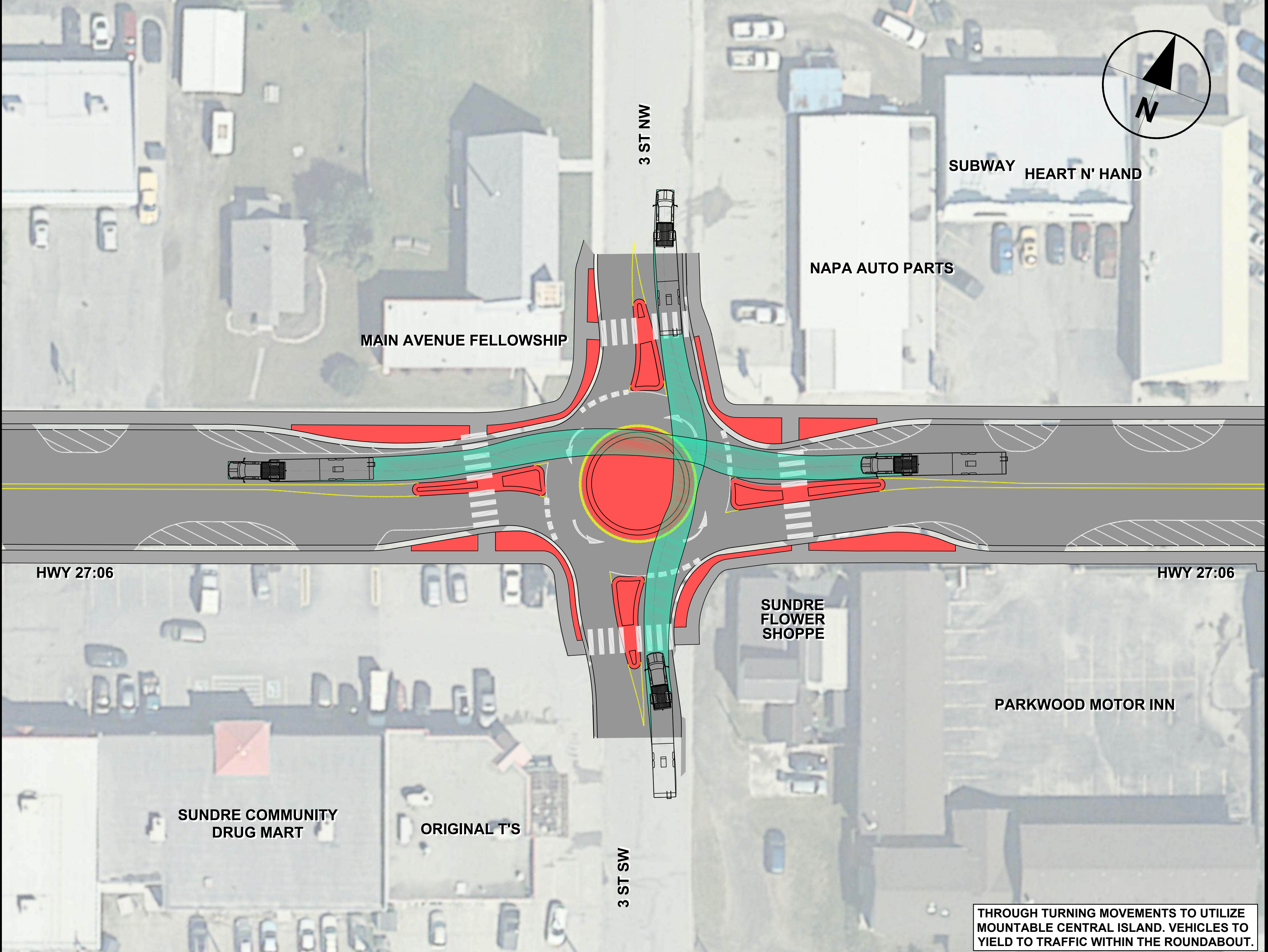
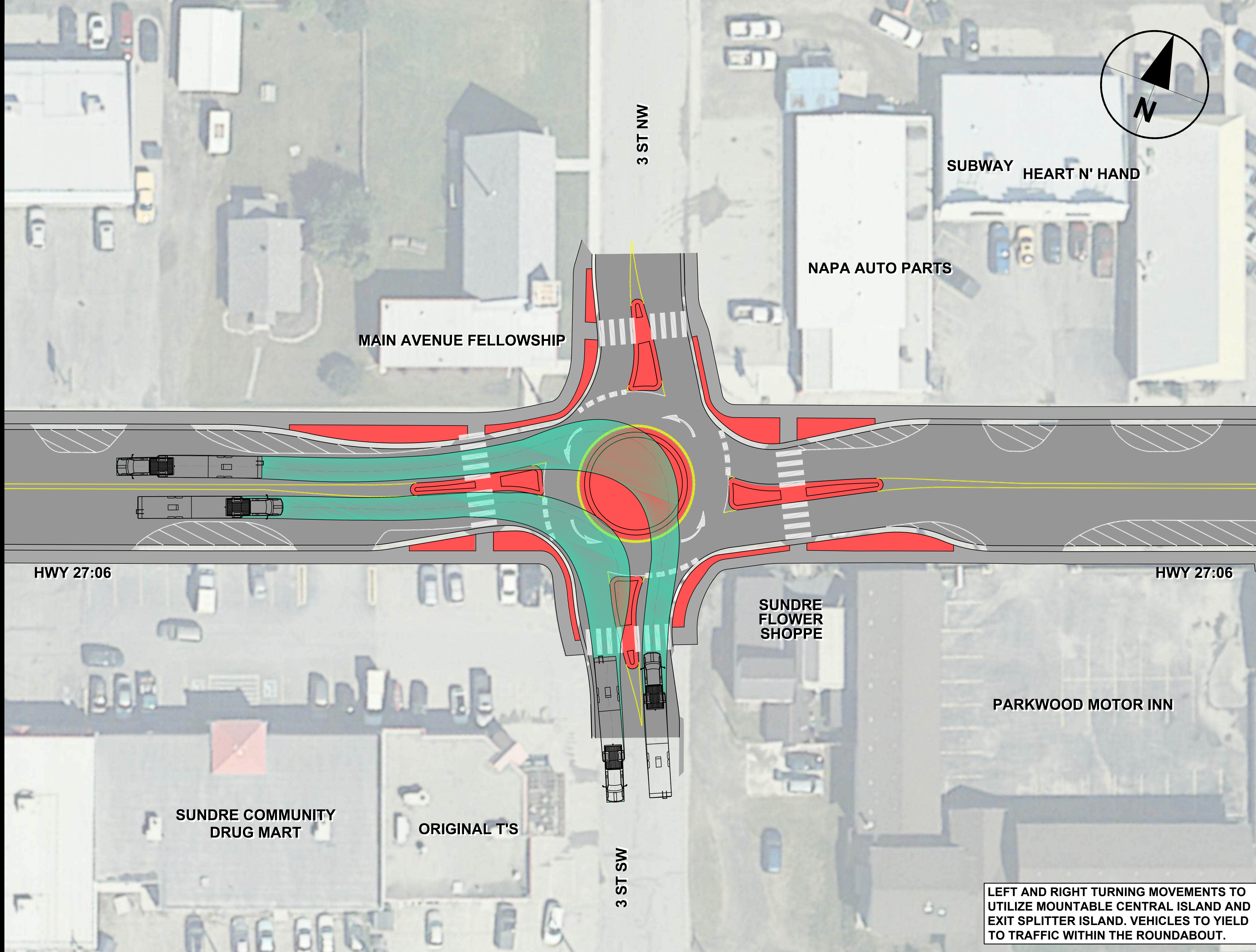


Opposing traffic able to navigate alongside each other with standard truck load width of 7.3 m. Review of historical records notes that loads in excess of 7.3 m utilize this route as well. Separate traffic accommodation strategy is required to minimize impacts to traffic for these loads in excess. Special consideration will be given to minimize impacts to these oversized loads during construction.

Roundabout Entrance Approach Section



Opposing and side street vehicles to yield to large trucks maneuvering through mini-roundabouts.

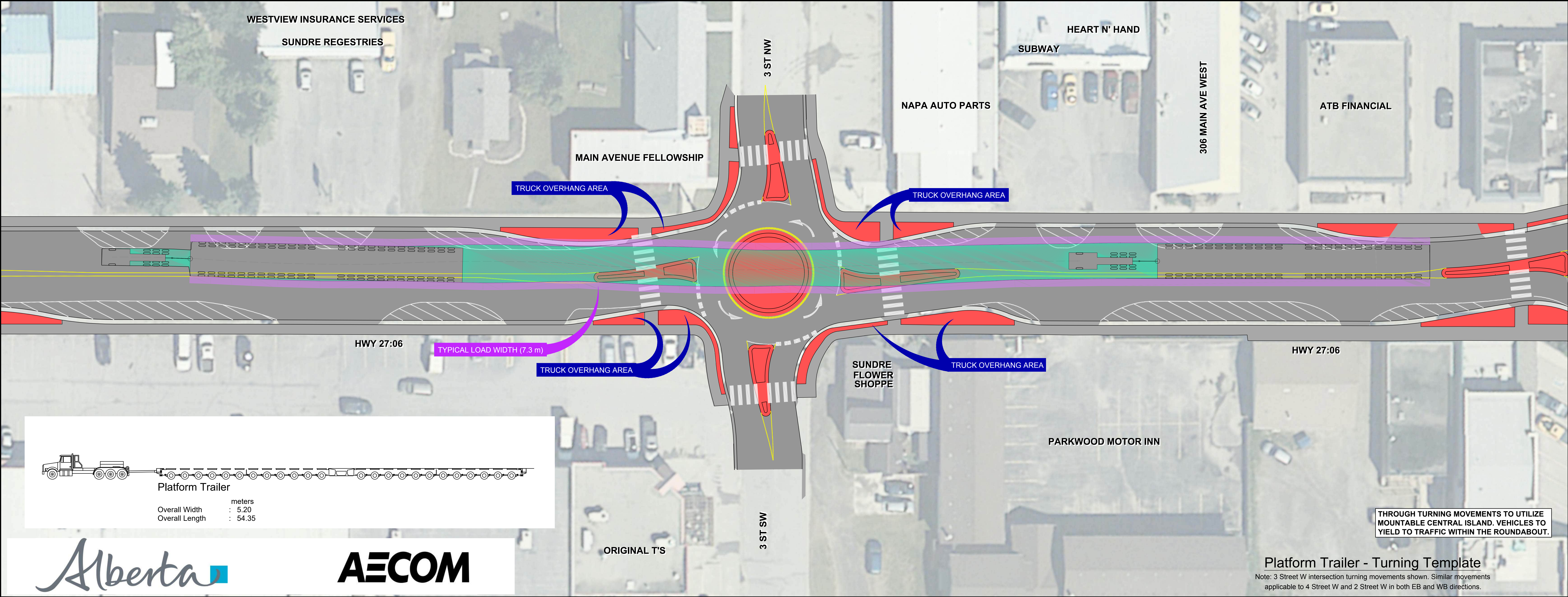
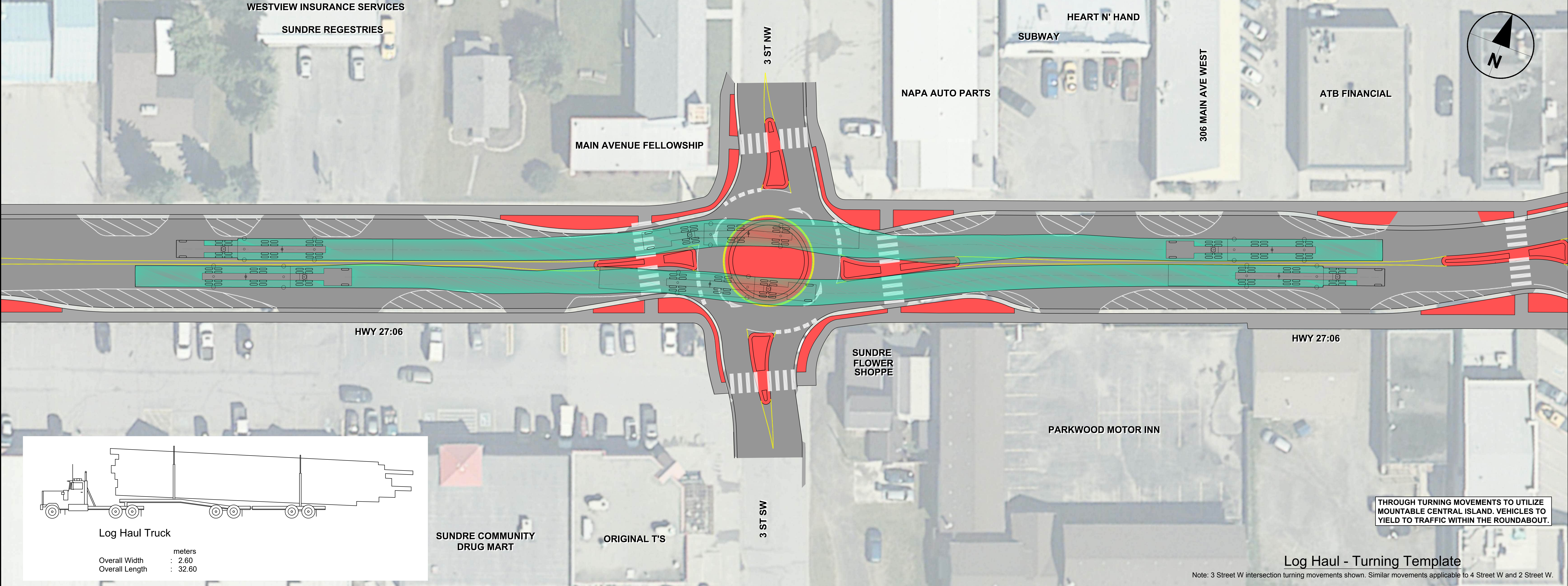


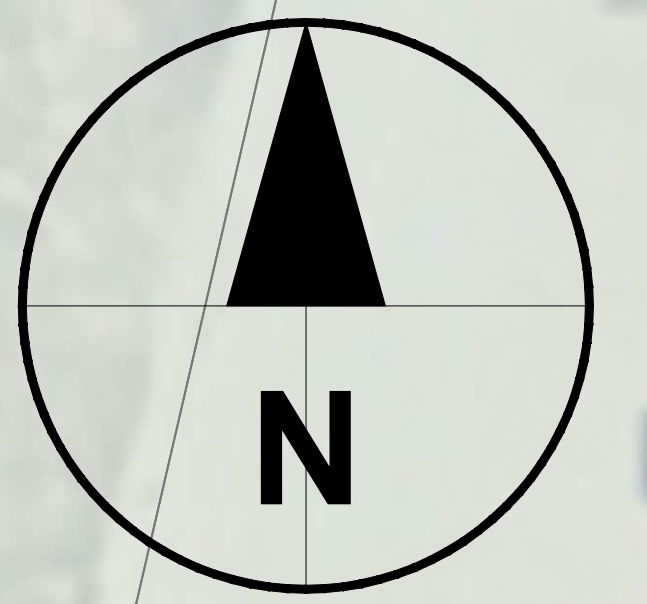
Truck and Fifth Wheel Trailer

	meters
Overall Width	: 2.57
Overall Length	: 16.94

Truck and Fifth Wheel Trailer - Turning Template

Note: 3 Street W intersection turning movements shown. Similar movements applicable to 4 Street W and 2 Street W.





Why Traffic Signals?

- Improve traffic flow for northbound to westbound movement to address existing and future traffic demands.
- Minimize impact to surrounding businesses and accesses.
- Improves pedestrian safety within the intersection.

SW3-33-5W5M

SUNDRE
TOURIST
INFORMATION

HWY 27:06

Highway 760 Scope Includes:

- Intersection Assessment
- Traffic Signalization
- Intersection lighting upgrades to increase visibility for users.
- Modifications to pedestrian crossing locations and sidewalk improvements

NW34-32-5W5M

HWY 760

Project Scope Overview:

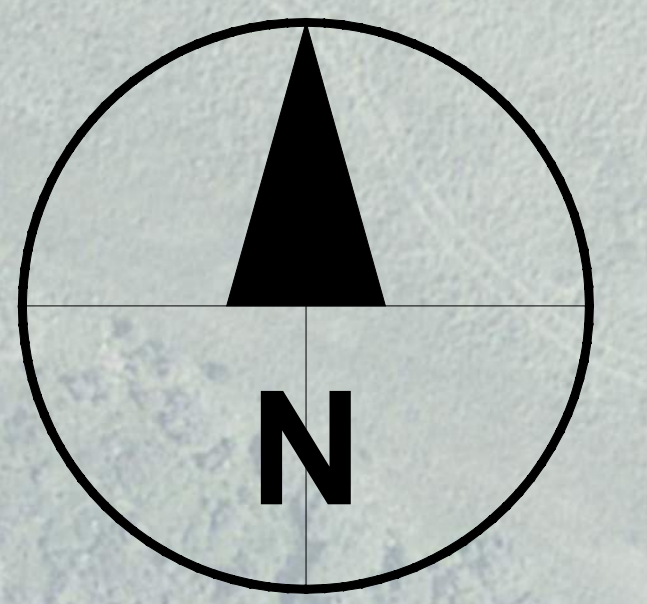
Upgrading the existing two-way stop control intersection at Hwy 22/27/584 to a single lane with design to accommodate oversized, overweight vehicles with proposed truck apron, mountable splitter islands and outside off-tracking areas.

Benefits of a Roundabout at this Intersection

- Roundabout will improve traffic flow on Highway 22/27/584 to address existing and future traffic demands.
- The roundabout will facilitate continuous movement from each direction resulting in less idling time.
- Lighting upgrades will increase visibility for users.

Int #990 Project Goals:

- Minimize impacts to surrounding area (adjacent land, businesses, utilities, and watercourse).
- Accommodate oversized, overweight vehicles.
- Constructible design to minimize impacts during construction.





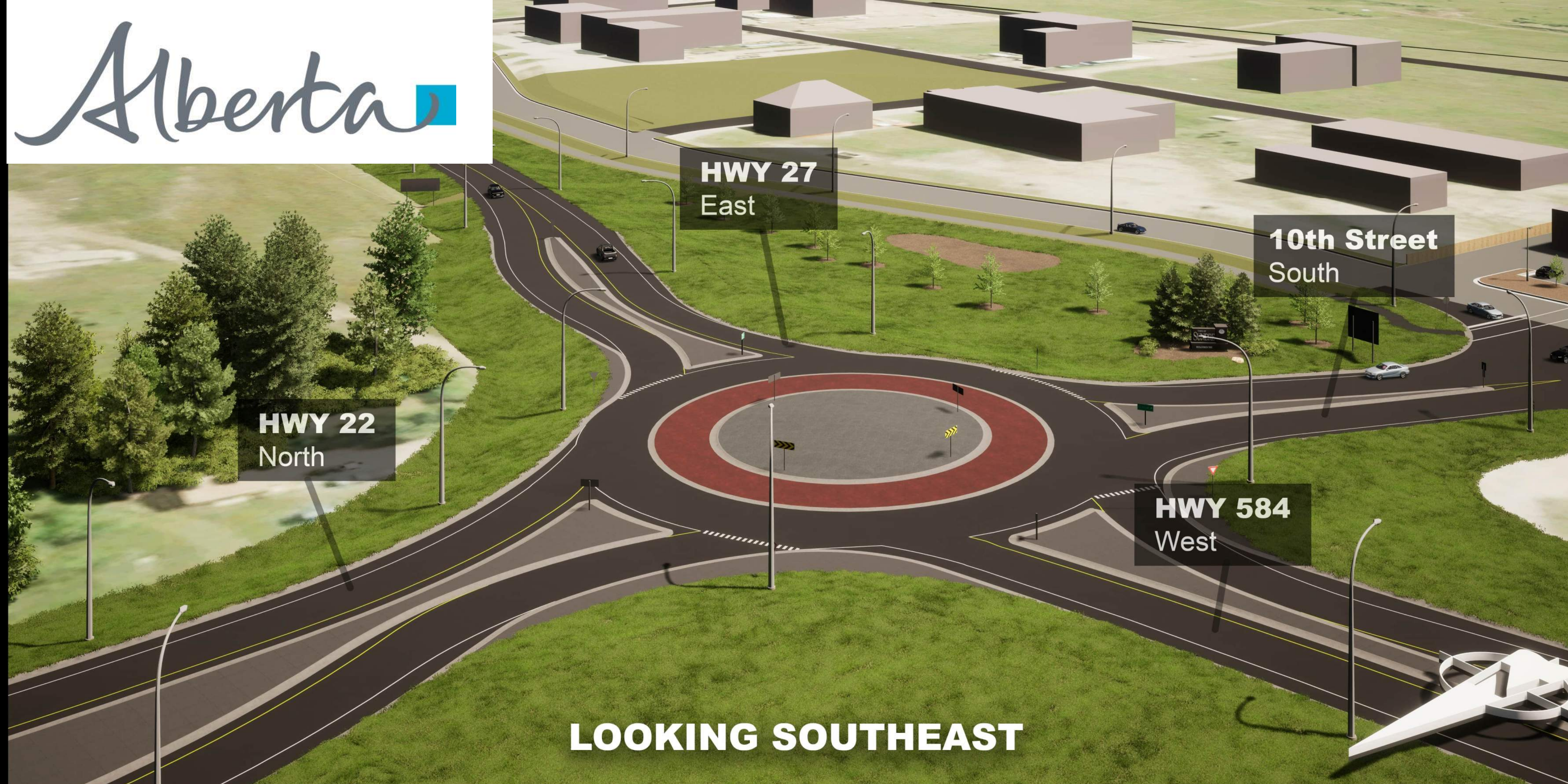
HWY 584
West

HWY 22
North

HWY 27
East

10th Street
South

22 NORTH
Caroline
WEST **EAST**
Cowboy
Tr.



LOOKING SOUTHEAST



LOOKING NORTHEAST



DRIVING WESTBOUND ON COWBOY TRAIL



DRIVING SOUTHBOUND ON HWY 22



DRIVING EASTBOUND ON HWY 584



DRIVING NORTHBOUND ON 10th STREET (RR54)

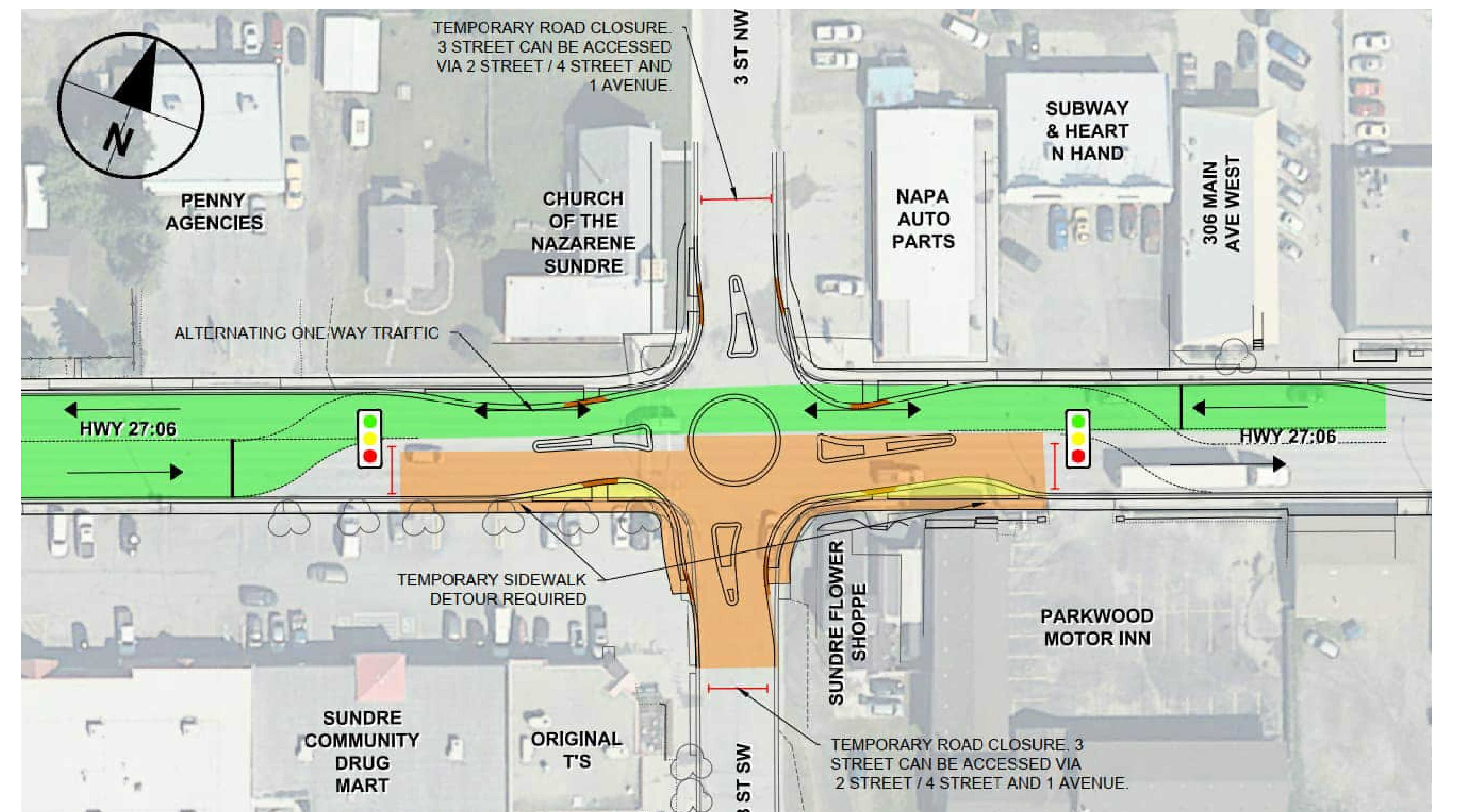
Possible Construction Staging

What to expect during construction:

- E-W traffic will be maintained through Highway 27
- Traffic movements at the Hwy 27/22/584 intersection will be maintained.
- Business accesses will be maintained. Short term closures will be mitigated through alternative access points.
- Temporary side road/sidewalk closures during mini-roundabout construction at 2 St W, 3 St W, 4 St W.
- Potential for local road closures north and south of the roundabouts and one way alternating traffic through downtown Sundre.

Communication and staging plans to be established during construction to advise local businesses of construction activities.

Example of how E-W traffic may be maintained through Hwy 27:



LEGEND

- OPEN TRAFFIC
- ONGOING CONSTRUCTION
- TEMPORARY ASPHALT