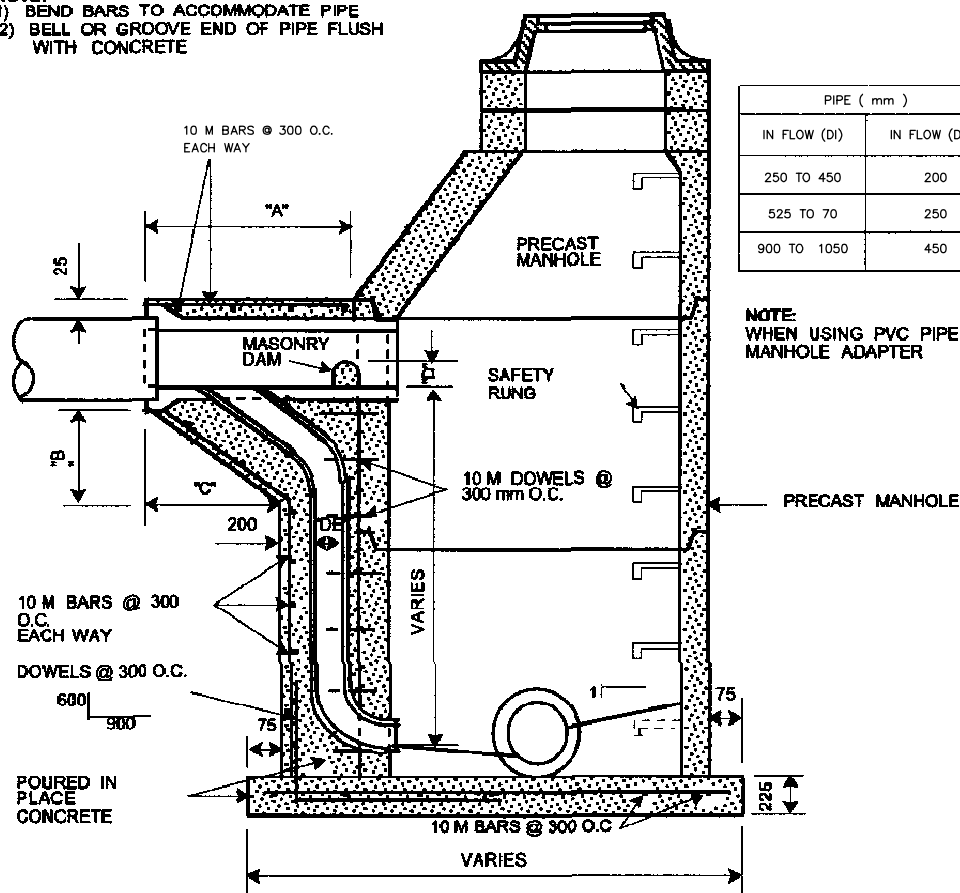


**PLAN**

- NOTE:**  
1) BEND BARS TO ACCOMMODATE PIPE  
2) BELL OR GROOVE END OF PIPE FLUSH WITH CONCRETE



**SECTION**

PIPE ( mm )		"A"	"B"	"C"	"D"
IN FLOW (DI)	IN FLOW (DE)	mm	mm	mm	mm
250 TO 450	200	900	400	400	75
525 TO 70	250	1050	450	450	125
900 TO 1050	450	1575	600	600	150

**NOTE:**  
WHEN USING PVC PIPE, INSTALL A PVC MANHOLE ADAPTER

Drop Manhole

2008 - 06 - 02

Detail 33 30 10 02