
MEMO

Date: August 10, 2017
From: Gyula Gulyas (THEXLWIZ Consulting Ltd)
To: Katrina Froese (AAF)
Re: **GYPSY 2009 DLL Registration Trouble Shooting Tips**

Overview

Some users experience issues with registering the GYPSY 2009 DLL on the recently released Windows 64-bit operating systems (Windows 7, 8, 8.1, 10). This memo provides users with some trouble shooting tips that may help resolve these registration issues with the GYPSY DLL.

Background

The GYPSY 2009 DLL is a Microsoft COM type DLL which means that it needs to be registered on the user's system. The DLL installation instructions can be found in the document "GYPSY_2009_DLL_Manual.pdf" which is included in the GYPSY DLL software distribution package.

At the time of the development of the GYPSY DLL, it was compiled and tested on Windows XP and the latest version of Windows Vista. With the release of Windows 64-bit systems, some users may experience an error message at the time of the GYPSY DLL registration as shown in Figure 1.

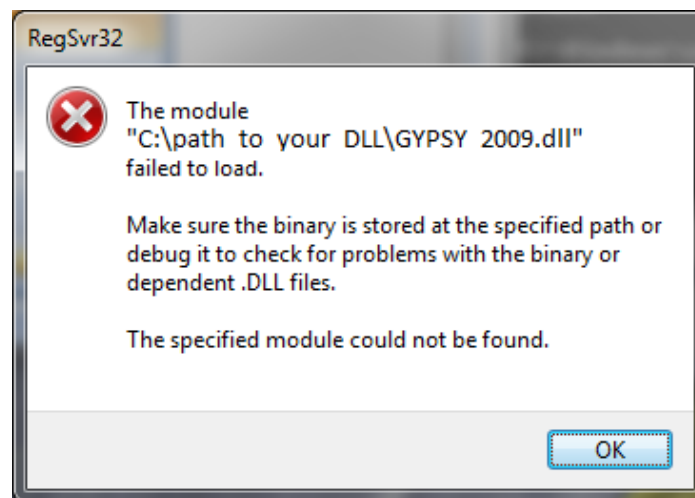


Figure 1. DLL Registration Error

“The module “C:\path_to_your_DLL\GYPSY_2009.dll” failed to load. Make sure the binary is stored at the specified path or debug it to check for problems with the binary or dependent .DLL files. The specified module could not be found.”

What is the Issue?

The GYPSY 2009 DLL was compiled on 32-bit Windows systems and it is relying on standard 32-bit Windows components to run properly. The Windows 64-bit operating systems have these 32-bit components embedded, however some of the component files are not used by the 64-bit Windows and thus are "hidden" in some folders that are not automatically searched and indexed by the system.

The challenge is to 1) find out which 32-bit component file is "missing", 2) find the file on your Windows system and 3) copy the file into the folder where the GYPSY DLL is located.

Virtually all users experiencing the registration issue is due to one specific file (MSVCR71.DLL¹) that is either missing from the computer or not located in the system path.

Steps to Resolve the GYPSY DLL Registration Error

STEP 1. The very first step is to double-check the **regsvr32** statement that was typed into the run command. Specifically, check that the path to the location of the GYPSY 2009 DLL is referenced correctly. Assuming that the DLL is located in the C:\GYPSY folder:

regsvr32 "C:\GYPSY\GYPSY_2009.DLL"

Windows 64-bit system users must run the Command Prompt as administrators by right-clicking on the Windows START button in the lower left part of the screen and selecting "**Command Prompt (Admin)**" from the menu as shown in Figure 2.

If everything is confirmed to be typed correctly and the error still occurs, proceed to step 2.

STEP 2. Check for the potentially missing **MSVCR71.DLL** 32-bit component file.

Most users who experience the GYPSY DLL registration error will be missing the MSVCR71.DLL. It is likely on their system, in most cases with multiple copies. The files however are located in folders that are not normally searched and indexed by Windows during DLL registration².

¹ MSVCR71.DLL is a Microsoft Visual C++ Runtime library for Visual Studio 2003.

² Windows only searches for files in folders that are included in the default system paths.

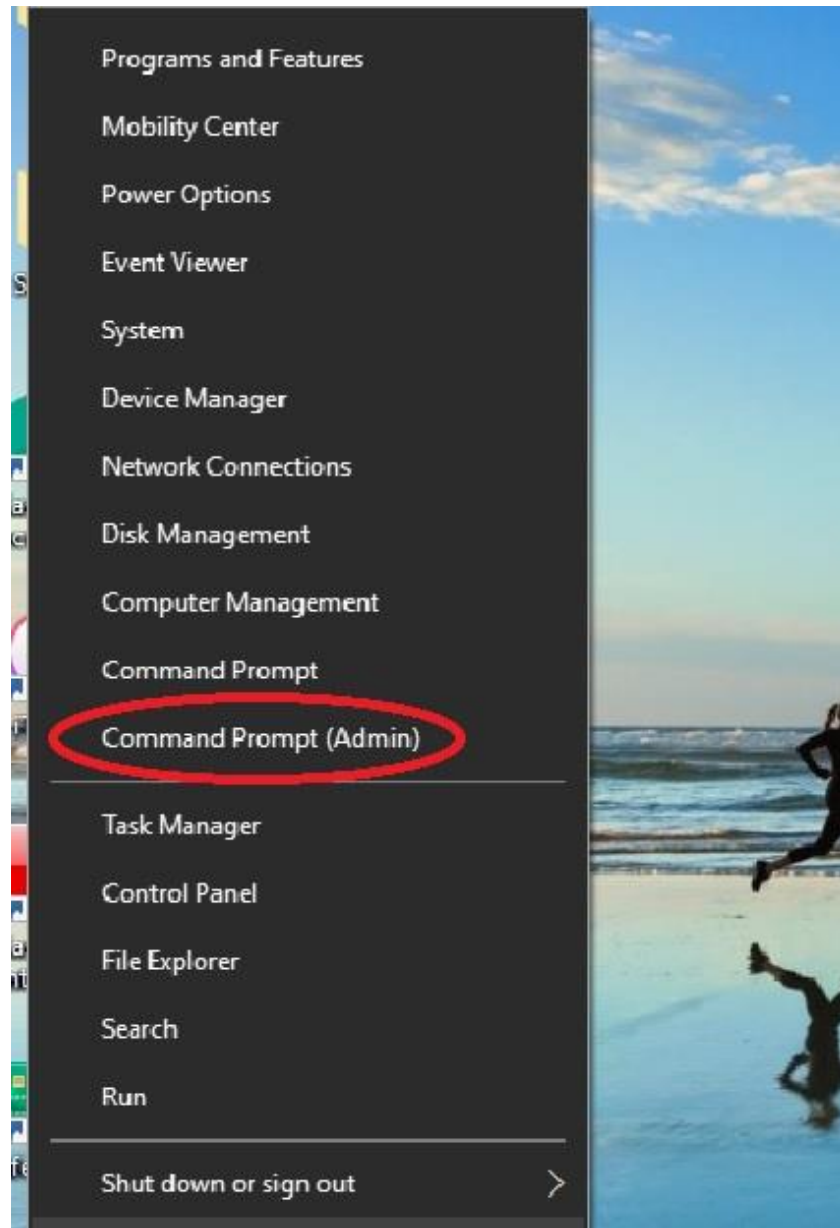


Figure 2. Windows 10 Access to Command Prompt (Admin)

In order to find the missing MSVCR71.DLL we need to search the computer's hard drive:

1. Open Windows Explorer;
2. Select the C drive in the left (folder panel); and
3. Type "msvcr71.dll" in the search box (upper right corner).

Figure 3 shows the search results in our example.

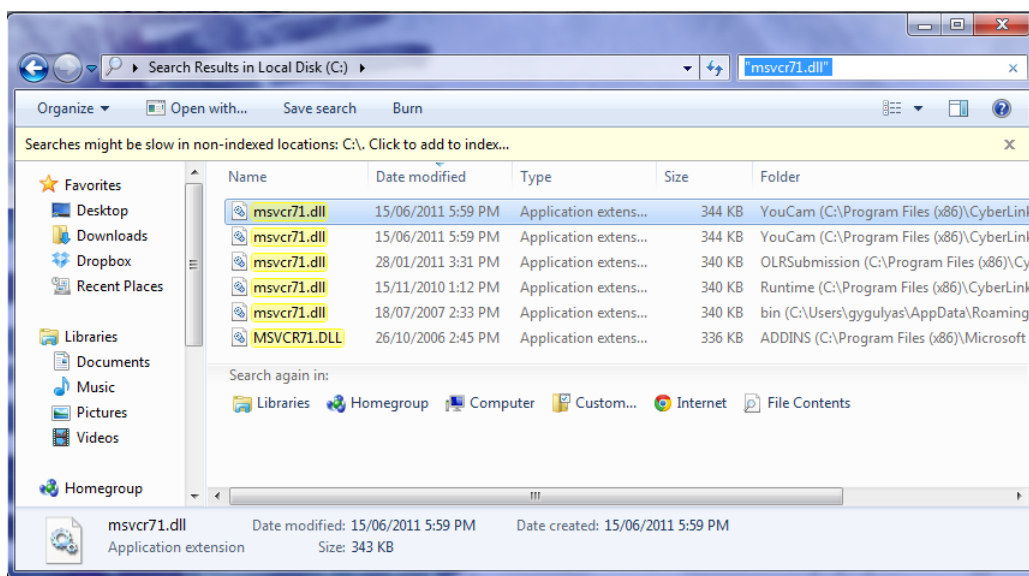


Figure 3. Searching for Missing Files in Windows Explorer

Generally there are several copies of the missing file can be found that are used by various applications installed on the user's system. Sort the list by clicking on the list header "Date modified" and pick the most recent version of the file.

Copy the selected file into the same folder where the GYPSY 2009.DLL is located! The user may need administrative rights on their computer to carry out this task.

VERY IMPORTANT: In the rare case that the "missing" file already exists in the GYPSY DLL folder, **DO NOT REPLACE/OVER-WRITE** the existing file with the one you copied! Contact the developer for further debugging and advice.

If the "missing" MSVCR71.DLL file cannot be found on your system, please also contact developer for further advice.

After recovering the missing DLL component and copying it into the **same folder where the GYPSY_2009.DLL is located**, the user should be able to register the GYPSY DLL as per the original installation instructions (Figure 4).

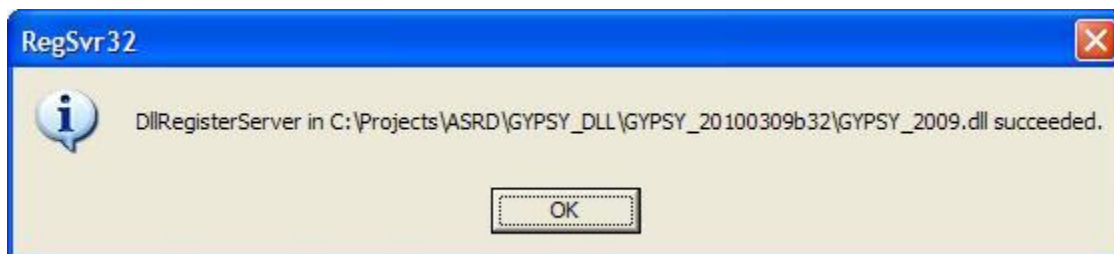


Figure 4. Successful Registration of the GYPSY DLL