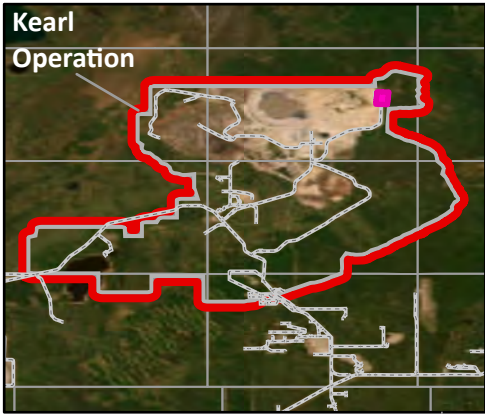


Surface Water Monitoring

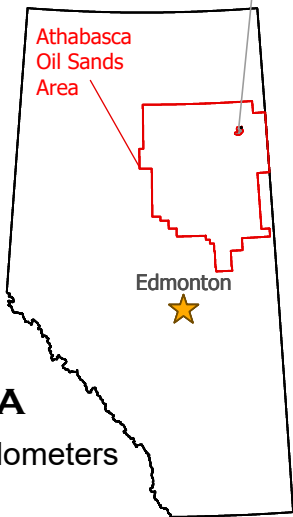
● Enhanced Monitoring Site

--- Kearn MSL

— Road



Projected Coordinate System:
NAD 1983 10TM AEP Forest

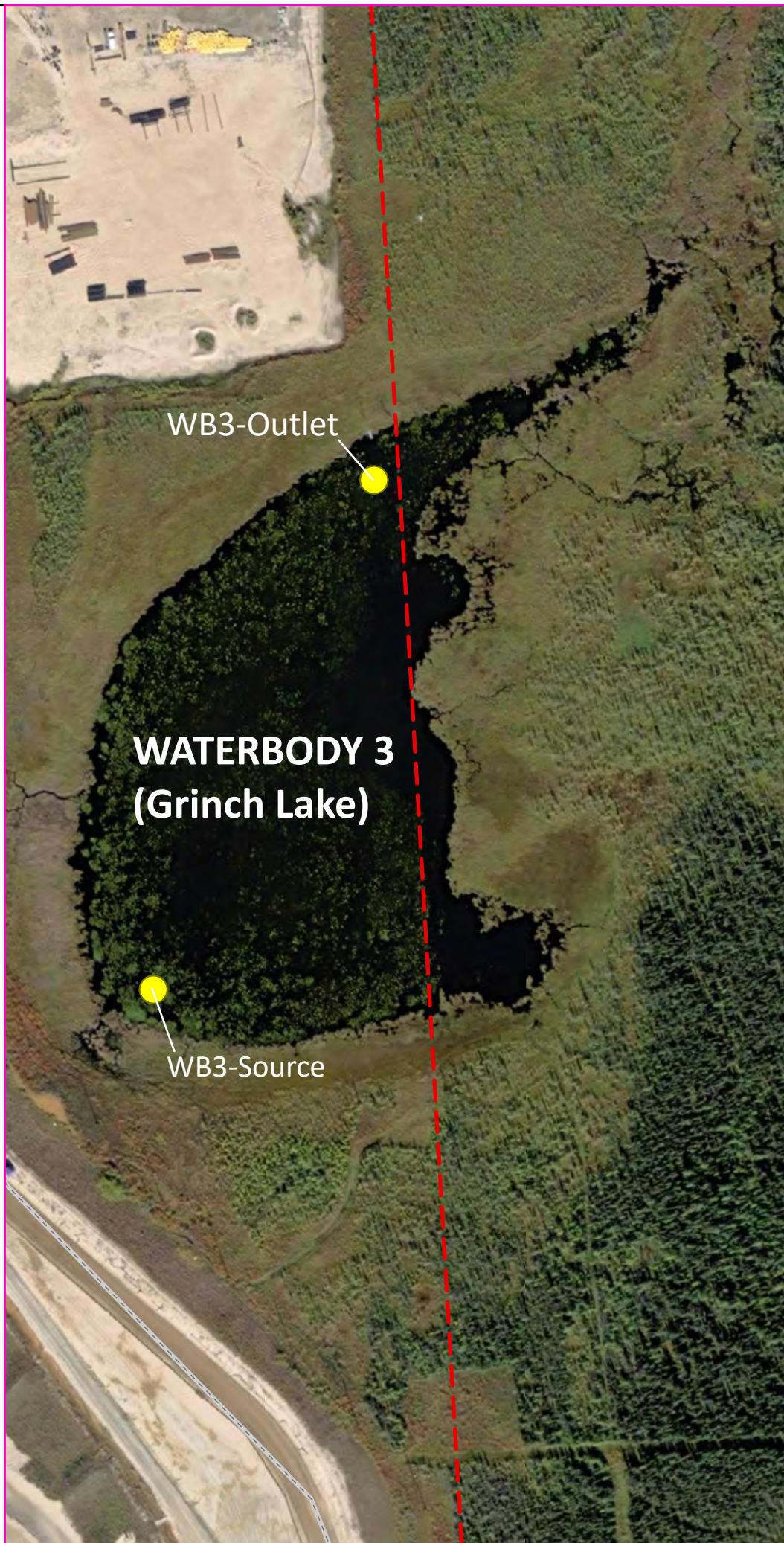


ALBERTA

0 300 Kilometers

Alberta Environment and Protected Areas

Produced by: Ministry of Environment and Protected Areas
Base data provided by the Government of Alberta under the Alberta Open Data License (2023).
Generalized Athabasca Oil Sands Designated Areas data provided by the Alberta Energy Regulator (2023).
Date Completed: 2023-04-05



WB3-Outlet

**WATERBODY 3
(Grinch Lake)**

WB3-Source