

M2 200

M2 200

M2 200

M2 200

R. 12

R. 11

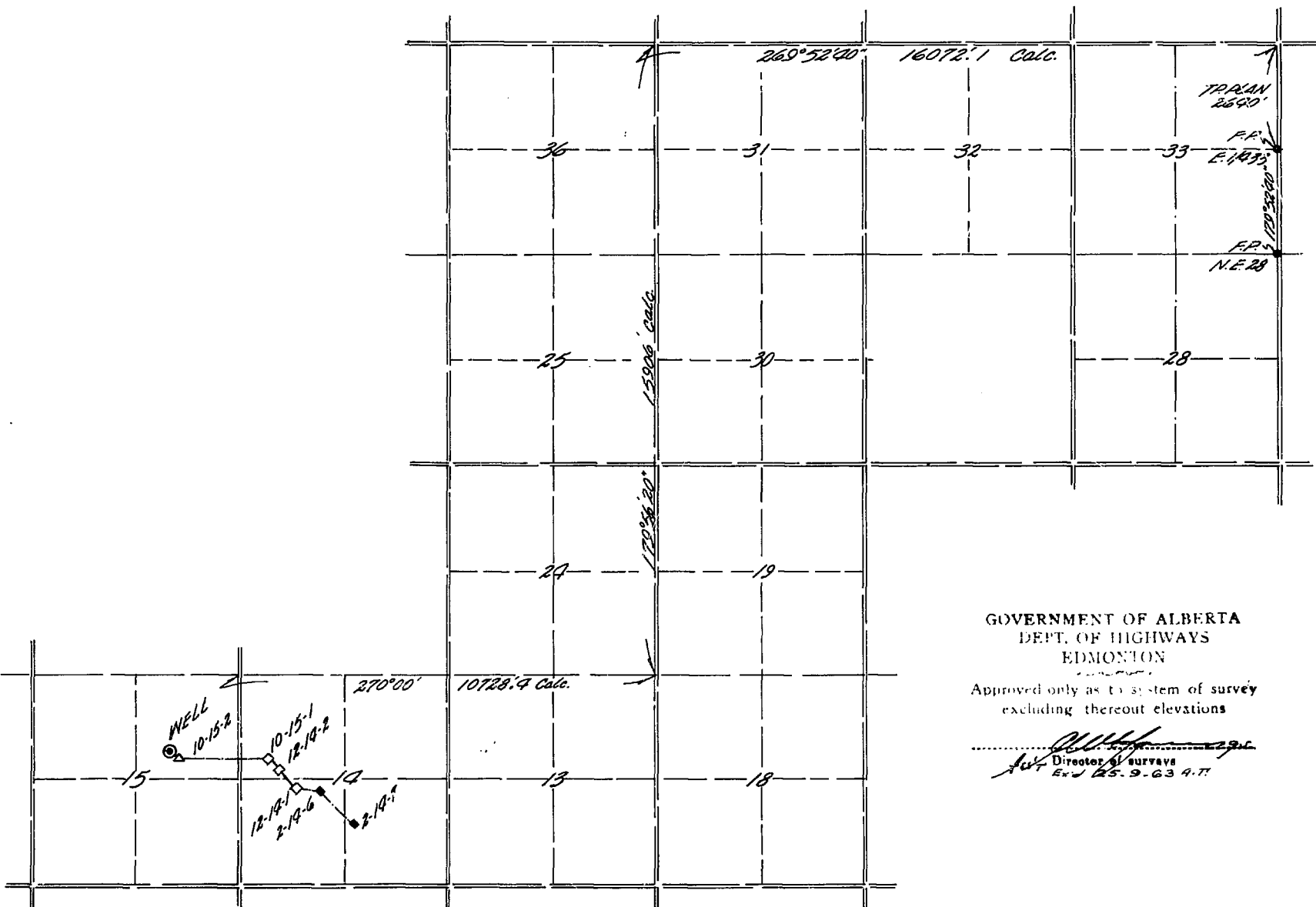
W. 5 M.

PLAN SHOWING
 SURVEY OF LOCATION
Imp Judy West 10-15BL-63-12.

L.S. 10 SEC. 15 TP. 63 R. 12 W. 5 M.

SCALE: AS NOTED
 SURVEYED: JULY 30, 1963.

TR. 63



WELL:
 Imp Judy West
 10-15BL-63-12

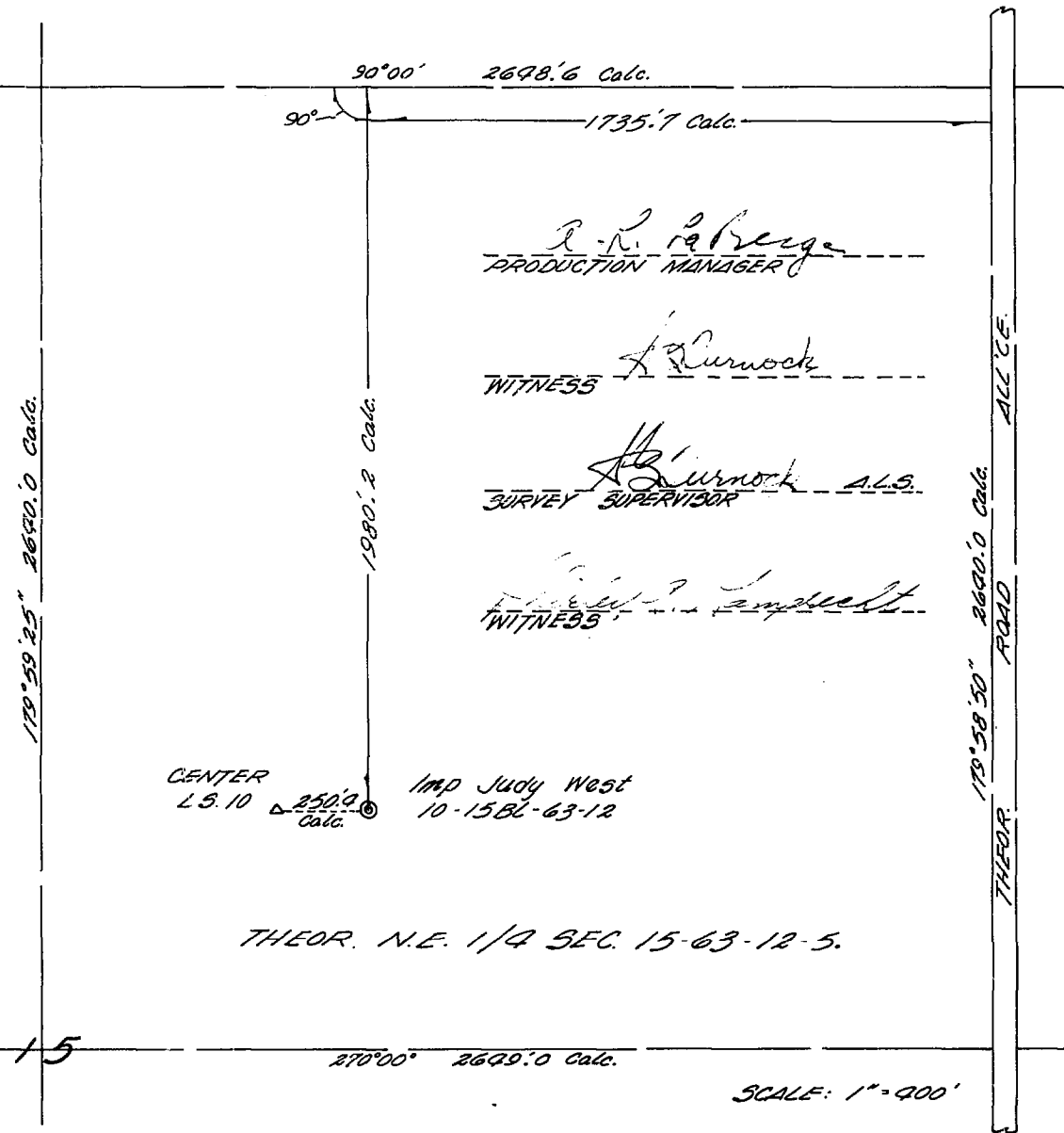
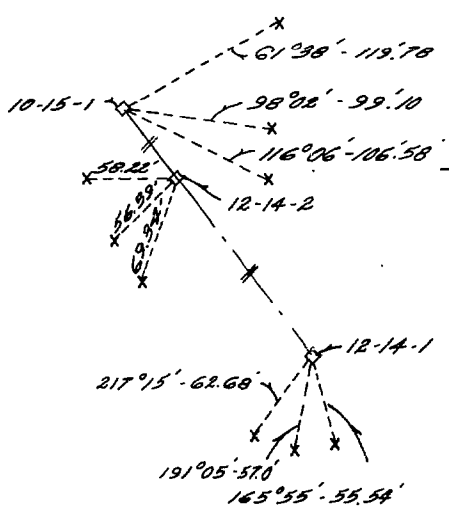
SCALE: 1" = 3000'

TRAVERSE STATIONS
 ▽ 10" SPIKE PLANTED
 ◆ 18" IRON BAR FOUND

GOVERNMENT OF ALBERTA
 DEPT. OF HIGHWAYS
 EDMONTON
 Approved only as to system of survey
 excluding thereout elevations

[Signature]
 Director of surveys
 No. 25-9-63 A-T

REFERENCE DETAIL
 N.T.S.



CENTER
 L.S. 10 2500.0 Calc.
 Imp Judy West
 10-15BL-63-12

THEOR. N.E. 1/4 SEC. 15-63-12-5.

SCALE: 1" = 900'

COURSE		CIRCLE BEARING	DISTANCE	CO-ORDS FROM N.E. COR. 33-63-11-5.	
FROM	TO			SOUTH	WEST
INITIAL STATIONS FROM SURVEY OF Imp Judy West 2-19BL-63-12 (W/S 66)					
2-19-7	2-19-6	319°20'10"	18802.2	29739.7	
2-19-6	12-14-1	273°30'	675.2		
12-14-1	12-14-2	322°47'	651.5	18242.2	25807.6
12-14-2	10-15-1	328°47'	216.9		
10-15-1	10-15-2	270°00'20"	2378.6		
10-15-2	10-15 WELL	306°43'40"	249.5	17020.5	28517.1

" / D.B. GILLMORE
 HEREBY CERTIFY THAT THE SURVEY REPRESENTED BY THIS PLAN HAS BEEN MADE UNDER MY PERSONAL SUPERVISION AND IN ACCORDANCE WITH THE WELL LOCATION SURVEY REGULATIONS IS TRUE AND CORRECT TO THE BEST OF MY KNOWLEDGE AND BELIEF AND WAS COMPLETED ON THE 30th DAY OF JULY 1963."
 DATED AT EDMONTON
 THIS 15 DAY OF AUGUST 1963.

[Signature]
 Duncan B. Gillmore A.L.S.
 WITNESS *[Signature]*