



Willow Creek Restoration Project Photos

Map Overview.....	2
Before.....	3
After	6
Interpretive Signs.....	8

Map Overview

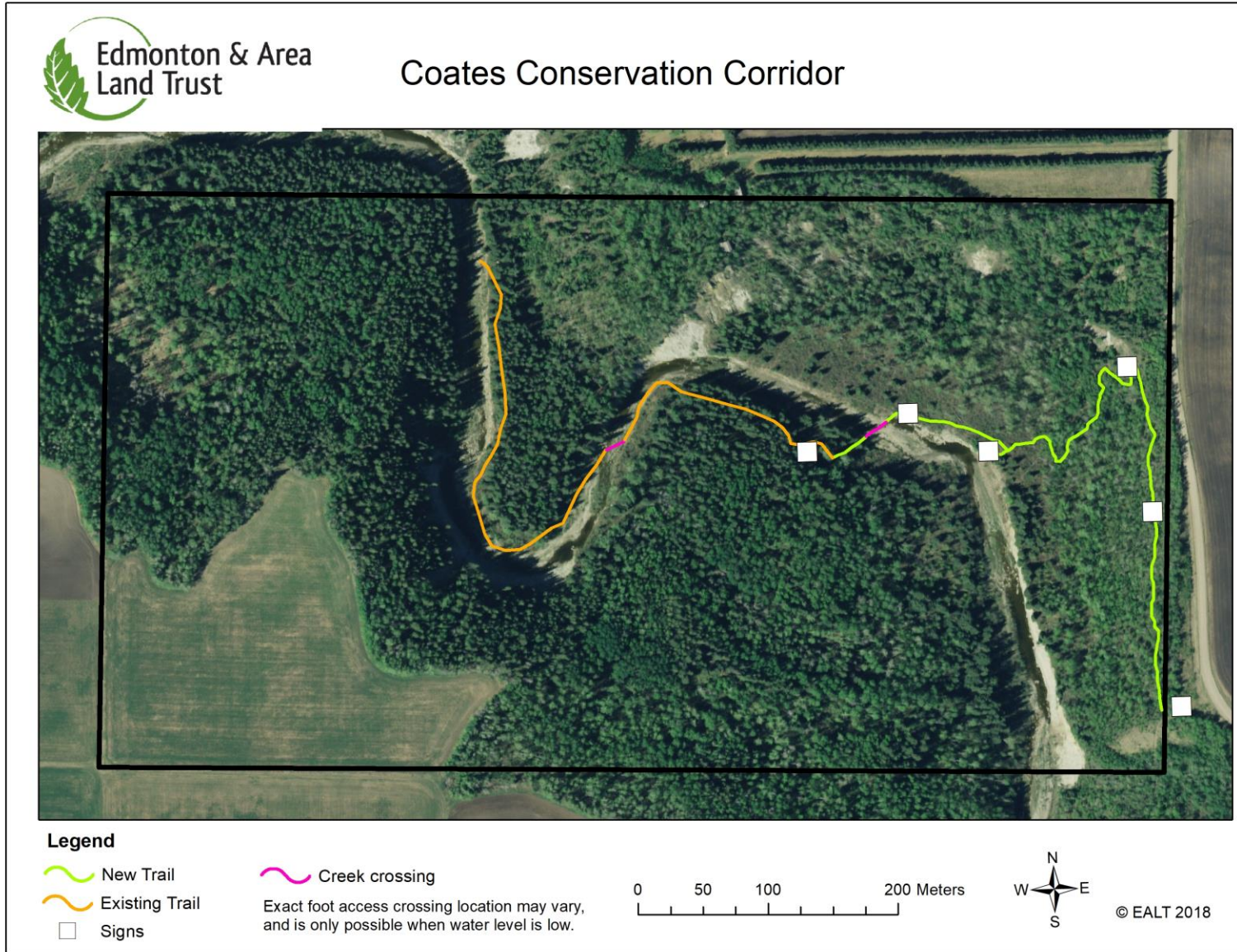


Figure 1. Map of trail at Coates showing the new trail (which made use of wildlife trails), and the existing trail.

Before

Photos of Off Highway Vehicle damage before project began



Figure 2. Deeply eroded OHV trail



Figure 3. Deeply eroded OHV trail



Figure 4. Deeply eroded OHV trail (red phone for size reference)



Figure 5. Pollution in creek from OHVs



Figure 6. View of OHV trail from top of bank



Figure 7. OHV damage to riparian area

After

Photos of competed project



Figure 8. Boulders placed at the OHV access trail to prevent trespassing



Figure 9. Erosion control blanket and woody debris on old trail (view from top of bank)



*Figure 10. Erosion control blanket and woody debris on old trail
(looking up from part way down the slope)*



Figure 11. New pedestrian only trail to facilitate management for staff



Welcome to the Coates Conservation Lands

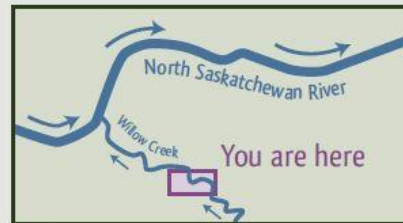
Ours to Protect



TD Friends of the
Environment
Foundation

Thanks to Ethel Coates' generous donation, this 80-acre natural treasure is now under the protection of the Edmonton and Area Land Trust. Ethel wanted to leave a legacy by donating this wilderness for all to enjoy in perpetuity.

- ◆ This natural area includes the steep cliffs, parkland forest and riparian area around Willow Creek, an important tributary of the North Saskatchewan River.
- ◆ It is home to unique plant and animal species.
- ◆ In the 1990s, dinosaur track imprints were discovered and removed for study by paleontologists.
- ◆ If you take your time while enjoying this unique habitat you may see evidence of beavers, woodpeckers, wildflowers and even dinosaurs on the wooded slopes and creek bed below!



The Coates Conservation Lands are part of the North Saskatchewan River watershed.

"Ethel was known to all who loved her to be a person in love with life! Her laugh was infectious and could be heard often and from far. She encouraged people around her to stretch themselves into the unknown and sometimes scary which often ended up in a great adventure for them all. She taught them about birds, taught them how to ski and canoe, the importance of the little things in life. *She made you pay attention to nature and all of its offerings, all the while relishing it herself.*"

— Ethel's family



Figure 12. Welcome interpretive sign at trailhead

Now Entering Private Land Conservation Area

OHV Use Prohibited

We appreciate that many Albertans love riding off-highway vehicles (OHVs), including on Alberta's public lands.

However, Ethel Coates donated this sensitive habitat to the Edmonton and Area Land Trust in order to reduce the impact of human activities on the animals and plants in this area, improve the water quality downstream, and protect the important wildlife corridors and breeding habitat of Willow Creek.

The Coates Conservation Lands are **NOT PUBLIC LANDS**.

Yet, the EALT welcomes all Albertans to enjoy their natural protected areas **ON FOOT**.

Much of the land is Environmental Reserve Easement (ERE), and Leduc County also prohibits OHVs on ERE.

Off-highway vehicles create negative impacts on riparian areas:

- ◆ Erosion and soil compaction
- ◆ Vegetation damage and introduction of invasive weed seeds
- ◆ Increased sedimentation and creek bottom damage
- ◆ Fire risk and noise disturbance

We need to work together to protect this special piece of Alberta's natural history. Join us in protecting clean drinking water, fish breeding habitat, and wildlife corridors by using OHVs on trails designed for their use elsewhere. Your children will thank you for the opportunity to hear the wind in the trees, feel the sun on their faces and get their hands dirty!

Hold Hands, not Handlebars

LEDUC COUNTY

NSWA
NORTH SASKATCHEWAN
WATERSHED ALLIANCE

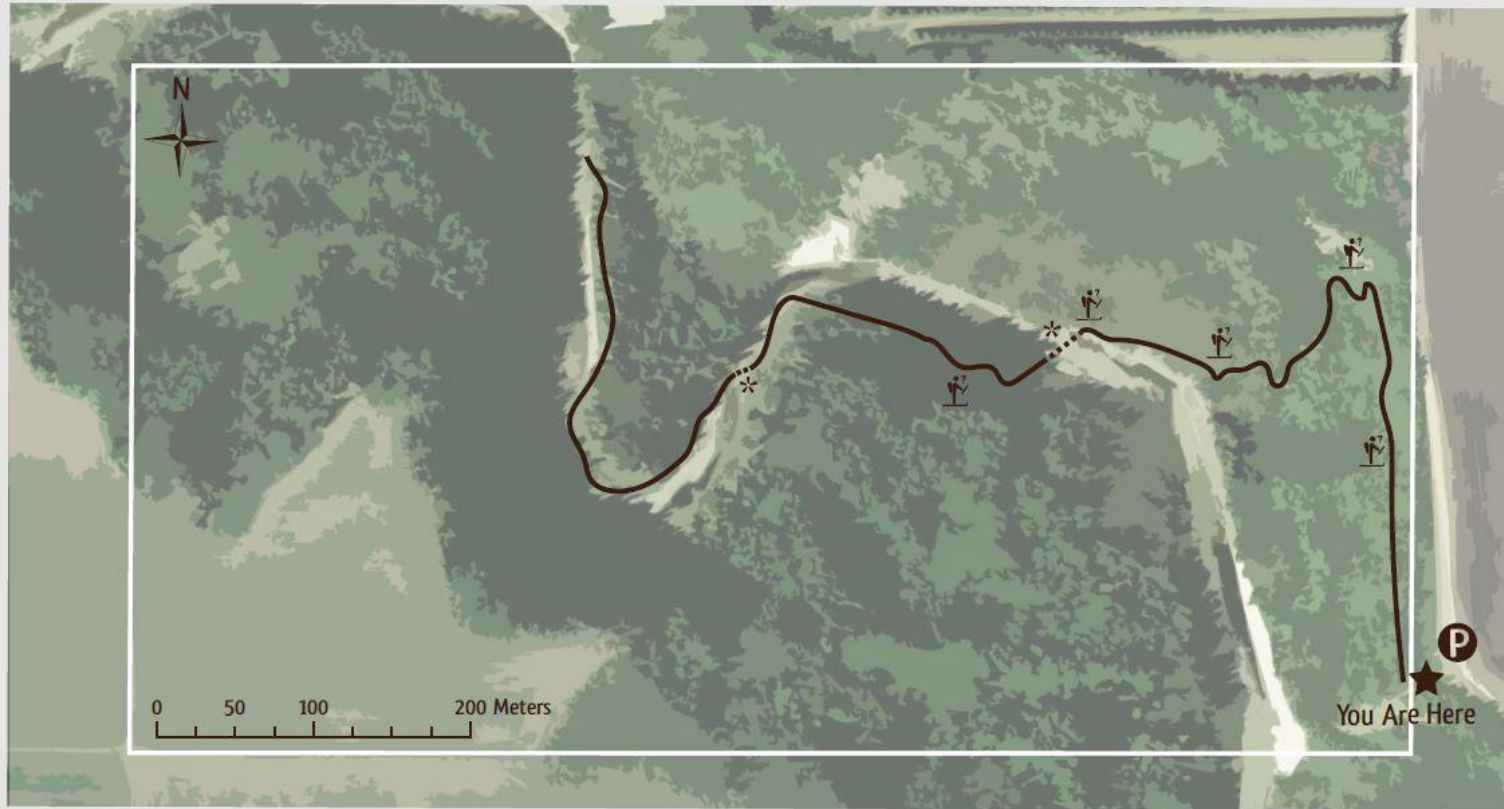
**Edmonton & Area
Land Trust**

Figure 13. Off-Highway Vehicle interpretive sign at trailhead




Trail Map

Enjoy this gentle walking trail through the Coates Conservation Lands. A walk to the creek crossing and back is 1.2 km (about 30 min). A walk to the the end of the trail and back is 2.4 km (about 1 hour).



Legend

 Trail (1.2 km one way)

 Creek crossing

 Interpretive sign

 Parking

The creek crossing locations may vary and should only be crossed when the water level is low. Please exercise caution when crossing and wear appropriate footwear.



Figure 14. Trail Map interpretive sign at trailhead



Visitor Guidelines

Take nothing but photos, leave nothing but footprints

For further information, visit www.ealt.ca/visit

Minimize your Impact

- ◆ Enjoy low-impact activities.
- ◆ Stay on designated trails.
- ◆ Keep your dogs under control, and on a leash between April 1 and July 15 to protect young wildlife.



- ◆ No Off-Highway Vehicles, including ATVs, quads, snowmobiles, dirt bikes, and other motorized vehicles.
- ◆ Mountain biking and horseback riding are not allowed.
- ◆ Hunting is not permitted, as this is a wildlife sanctuary.
- ◆ Campfires and smoking are not permitted at any time due to wildfire risk.



Show Respect

- ◆ Do not litter.
- ◆ Do not remove or damage trees, flowers, plants, animals, minerals, or fossils.
- ◆ Respect and quietly observe wildlife by giving them their space. Do not approach or feed wildlife, as this may frighten them or put you in a dangerous situation.
- ◆ Be aware of other visitors and be considerate about the noise you make.
- ◆ Stay on EALT lands and do not cross onto others' private property.



Figure 15. Visitor Guidelines interpretive sign at trailhead