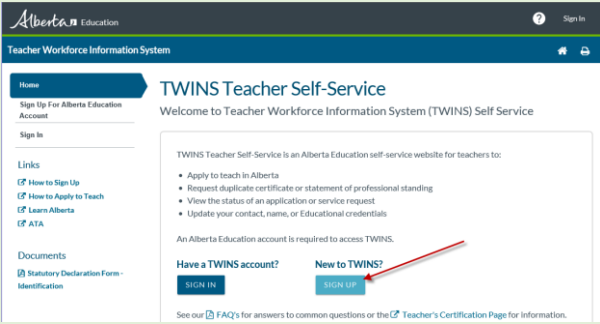


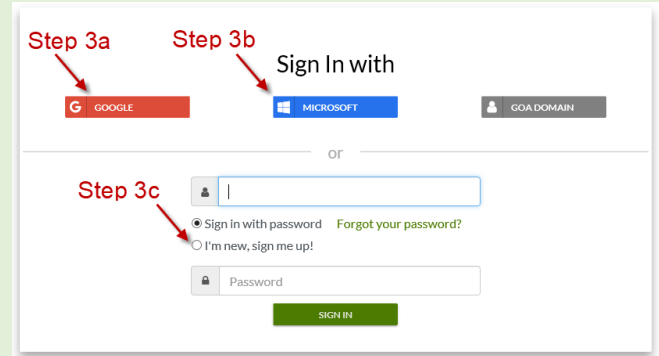
**Step 1:** Go to the TWINS site →  
<https://education.alberta.ca/TWINS>



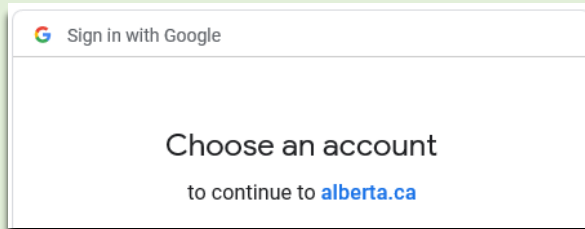
**Step 2:** Click the **SIGN UP** button:



**Step 3:** Sign in with you Google OR Microsoft account OR Sign Up using another email account:

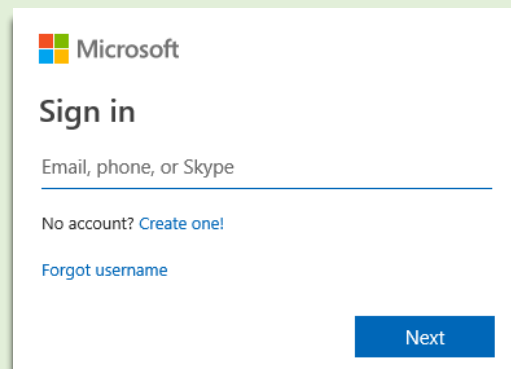
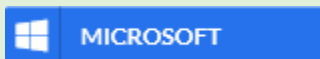


**Step 3a:** Sign in with your Google account:



OR

**Step 3b:** Sign in with your Microsoft account:



Once signed in using Step 3a or Step 3b, the TWINS Teacher Self-Service site will display. New applicants can now apply to teach in Alberta. Otherwise, choose the option to Enroll.

If you don't have a Google or Microsoft Account, go to **Step 3c**...See next page

## Step 3c: Sign in with the "I'm new, sign me up!" option:

Please sign in to access **Teacher Workforce Information System** (<https://extranet.education.alberta.ca/twins.public/>)

### Sign In with

GOOGLE      MICROSOFT      GOA DOMAIN

or

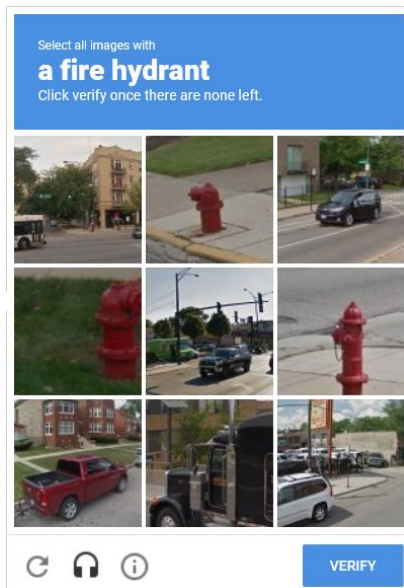
① Enter your email address

② Click "I'm new, sign me up!"

③ Click checkbox for "I'm not a robot" - you may be prompted with a CAPTCHA challenge question

④ Click SIGNUP

➔ When clicking on "I'm not a robot", you may be prompted with a CAPTCHA challenge question...e.g.:

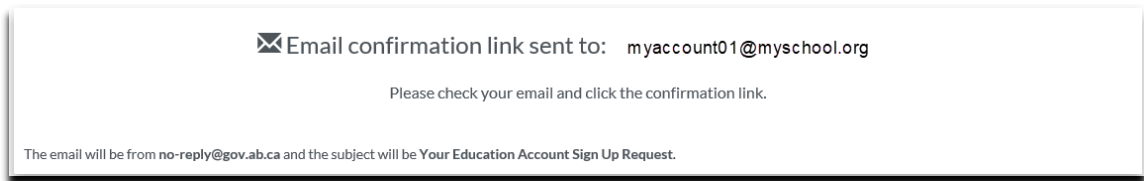


**Note: pictures may refresh – continue to click on matching images until all have been selected.**

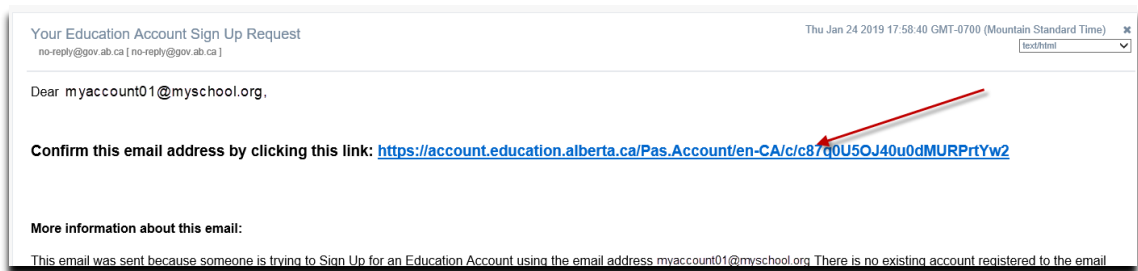
- ➔ When the email address has been entered, the “I’m new, sign me up!” radio button has been clicked and the Captcha question has been completed, click “SIGN UP”



- ➔ An email message will be sent to the email address indicated on your form – e.g.:

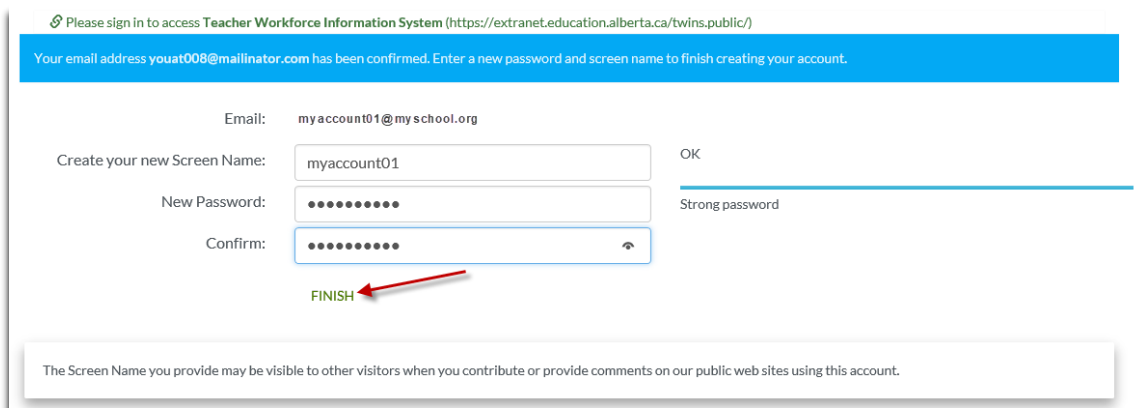


- ➔ Sign into your email account and retrieve the message. E.g.:



- ➔ Click the hyperlink on the email to complete your Education account signup. (see above)

- ➔ Complete the form to provide a screen name (any unique ID is acceptable) and password. Click **FINISH** when complete.



**Step 4:** You have now created an Alberta Education Account and the TWINS Teacher Self-Service site will display. New applicants can choose an option to apply to teach in Alberta. Otherwise, choose the option to Enroll.

Alberta Education myaccount01

Teacher Workforce Information System

## Home

Apply for Alberta Teacher Certification

Enroll for Teacher Self-Service

Mailbox

### Links

- How to Enroll in TWINS
- How to Apply to Teach
- Learn Alberta
- ATA

### Documents

- Statutory Declaration Form - Identification

# TWINS Teacher Self-Service

Welcome to Teacher Workforce Information System (TWINS) Self-Service

Are you applying for Alberta teacher certification for the first time?

**APPLY TO TEACH**

Do you hold or have you previously held Alberta teacher certification, or Have you previously applied to teach or enrolled but need to re-enroll under a different account?

**ENROLL**

See our [FAQ's](#) for answers to common questions or the [Teacher's Certification Page](#) for more information.

Alberta.ca Contact Us Accessibility Disclaimer Privacy Secondment Opportunities © Copyright 2019