

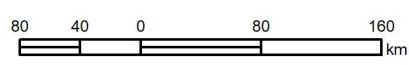
**90-Day
Precipitation Accumulations
2nd Greatest (1961-2018)**

*estimated using interpolated data

Precipitation (mm)

	< 200		440 - 480
	200 - 240		480 - 520
	240 - 280		520 - 560
	280 - 320		560 - 600
	320 - 360		600 - 640
	360 - 400		> 640
	400 - 440		

Near-real-time weather data was assembled and quality controlled by Alberta Agriculture and Forestry. Displayed accumulations were based on weather data from the 1961-2018 period, interpolated to township centres using AbClimate-3.6



Compiled by Alberta Agriculture and Forestry, Environmental Stewardship Branch, Engineering and Climate Services
Created on November 25, 2019

Visit weatherdata.ca for additional maps and meteorological data