

Government of Alberta

# Find Your Farm

Alberta Soil Information Viewer

## Contents

Definitions.....	1
<i>Getting Started</i> .....	2
Area of Interest .....	2
Search and Zoom.....	3
<i>By Place Name</i> .....	3
<i>By Legal Land Descriptor</i> .....	5
<i>By AGRASID Soil “Polygon ID” Number</i> .....	6
<i>By Real Time GPS coordinate on a GPS enabled smart device</i> .....	7
<i>By Latitude and Longitude Geographic Coordinate pairs</i> .....	8
<i>By Bookmark</i> .....	11

## Definitions

The following is a description of several complimentary ways of searching for a specific locations in Alberta (like your farm) that are represented in the mapping area of the Alberta Soil Information Viewer and then Centering the mapped area of the viewer at this specific location, and then increasing the magnification at this location. This process is commonly known as “**searching and zooming to**” a specific location in the mapping area of the viewer.

The **mapping area** of the viewer is where spatial information like:

- Digital soils information [e.g. The Agricultural Regions of Alberta Soil Inventory Database (AGRASID);
- Color Infrared composite Satellite image mosaics and Orthographically rectified aerial photography (ORTHOPHOTO) mosaics; a mosaic is a patch work of the best, most cloud free imagery of a certain type over a finite period of time like a summer growing season stitched together over a large geographic region (like the Province of Alberta or agricultural area of the province).
- Municipality, city, town, village features;
- Water, roads, other utility features.
- Federal and provincial land, and legal land description boundaries.

Geographic coordinates from internet mapping websites, global positioning system (GPS) or from paper maps that define specific locations (well sites or towers, gate locations), linear features such as a fence lines or

Contact the [Ag-Info Centre](#), toll-free in Alberta at **310-FARM (3276)**, or outside of Alberta at 403-742-7901 for further soil viewer and agricultural information.  
20220524

**Alberta soil information and data**

## Find Your Farm

shelter belts, or area features like a field, feeding pen, dugout, or silage pit that are enclosed by the Alberta provincial border.

**Geographic features** in the Alberta Soil Information Viewer are defined by one or a group of latitude and longitude **coordinate pairs** such as: 51.23801, -113.94100 where the first number of the coordinate pair is the **latitude value** expressed as a positive decimal degree value, and a second number is the longitude value expressed as a negative decimal degree value in the geographic space that the Alberta boundary encloses on the nearly spherical shape that represents the earth's surface.

### Getting Started

1. Open a browser, go to the [Government Alberta website](#), search for "Alberta Soil Information Viewer" Left mouse click on the first available link that says "Alberta Soil Information Viewer | Alberta.ca" and scroll to the button:



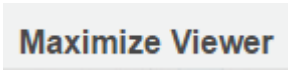
Go to the Soil Information Viewer 

2. Left mouse click or tap the button:



Close & Continue

to get started on the Alberta Soil Information Viewer.

3. Left mouse click or tap the maximize viewer button  in the top right corner of banner for the viewer.

## Area of Interest

For the purposes of this "How To" the area of interest is Agricultural Regions of Alberta Soil Inventory Database (AGRASID) polygon 11002 (Polygon ID 11002), north east section 23 township 26 range 29 west of 4 (NE-23-026-29-4) east of "Balzac", the geographic coordinates are: 51.23801, -113.94100.

Contact the [Ag-Info Centre](#), toll-free in Alberta at **310-FARM (3276)**, or outside of Alberta at 403-742-7901 for further soil viewer and agricultural information.  
20220524

**Alberta soil information and data**



Figure 1: AGRASID Soil Polygon ID = 11002, on ne-23-026-29-4, north east of the Balzac viewed with a 150 centimeter pixel resolution false color infrared composite SPOT satellite image backdrop as the base map.

## Search and Zoom

### By Place Name

1. Enter “Balzac” in the search box located in the top right area of the viewer, and



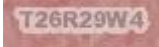
You can zoom to one of the following:



- Legal Land Descriptor (e.g., qq-ss-ttt-rr-m or ttt-rr-m)
  - Coordinates: Latitude N, Longitude W (e.g., 55,-115)
  - Polygon number
  - Any placename in Alberta (e.g., Edmonton)
2. Left click, tap the magnifying glass icon to begin the search. Tapping the “done” button , or pressing enter key if available. will also initiate the search.

Contact the [Ag-Info Centre](#), toll-free in Alberta at **310-FARM (3276)**, or outside of Alberta at 403-742-7901 for further soil viewer and agricultural information.  
20220524

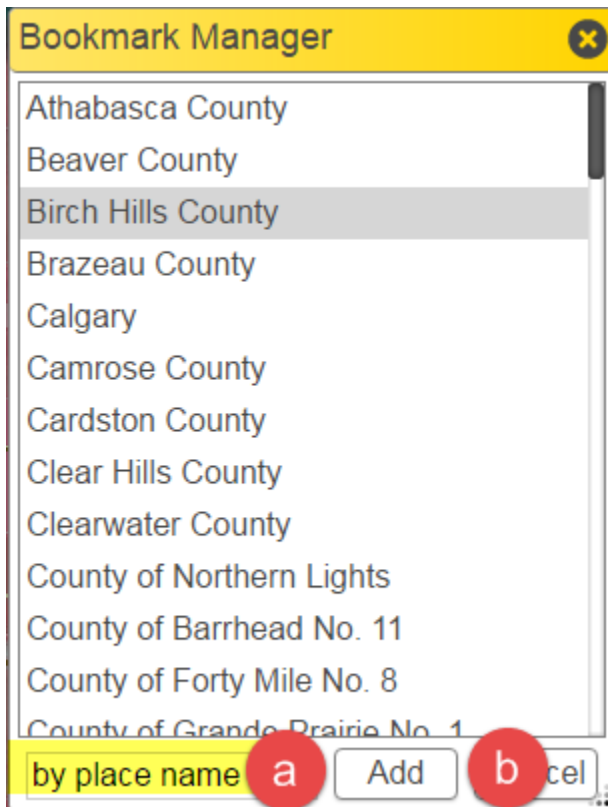
**Alberta soil information and data**


## Find Your Farm

3. Holding the left mouse button or making contact with the screen drag and move the map area so that area of interest is centered in the map area. Each Township in the mapped area will have a label  and each Section has a label as well that is in the center of the section of interest. Quarter sections NW, NE, SW, and SE are inferred by the quarter section line work that is layered on top of each section polygon.

4. Open the bookmark window  and press the “Create”  button to create a “by place name” bookmark by:

- Typing: “By place name” the text box in the Bookmark Manager window, and
- Pressing the add button.



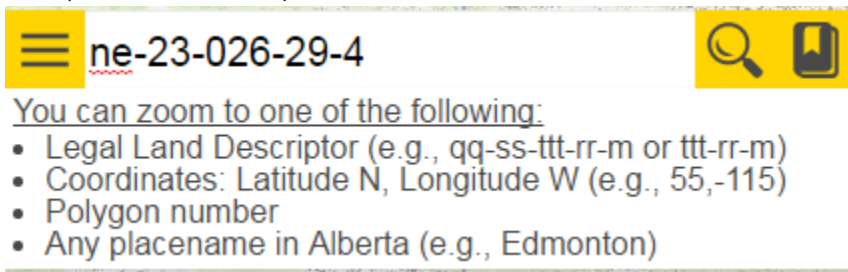
5. Left click, tap the full extent icon 

Contact the [Ag-Info Centre](#), toll-free in Alberta at **310-FARM (3276)**, or outside of Alberta at 403-742-7901 for further soil viewer and agricultural information.  
20220524

# Alberta soil information and data


**By Legal Land Descriptor**

1. Enter the legal land description for the parcel of interest north east section 23 township 26 range 29 west of 4 (NE-23-026-29-4):



2. Left click, tap the magnifying glass icon to begin the search. Tapping the “done” button , or pressing enter key if available. will also initiate the search.
3. When the search is complete the map area of the viewer should be situated close to the north east section 23 township 26 range 29 west of 4 quarter section:



4. Open the bookmark window  and press the “Create”  button to create a “By Legal Land” bookmark by:
  - a. Typing: “By Legal Land” in the text box in the “Bookmark Manager” window, and
  - b. Pressing (left mouse clicking or tapping) the add button.

Contact the [Ag-Info Centre](#), toll-free in Alberta at **310-FARM (3276)**, or outside of Alberta at 403-742-7901 for further soil viewer and agricultural information.  
20220524

**Alberta soil information and data**

5. Left click, tap the full extent icon



**By AGRASID Soil “Polygon ID” Number**

1. Another form of search is by AGRASID polygon number value. Enter the soil polygon number (11002) into the search box for the dominant soil polygon in the north east section 23 township 26 range 29 west of 4 quarter section.

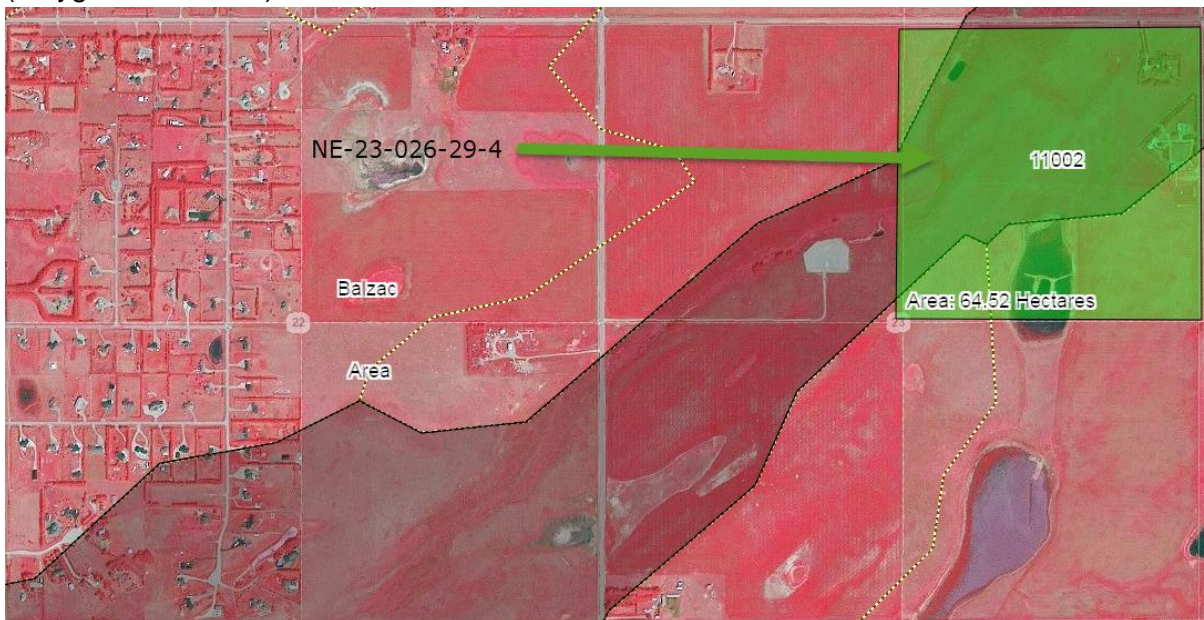
☰ 11002



You can zoom to one of the following:

- Legal Land Descriptor (e.g., qq-ss-ttt-rr-m or ttt-rr-m)
- Coordinates: Latitude N, Longitude W (e.g., 55,-115)
- Polygon number
- Any placename in Alberta (e.g., Edmonton)


2. When the search is complete the map area of the viewer zoomed close to the AGRASID polygon number (Polygon ID= 11002):




Contact the [Ag-Info Centre](#), toll-free in Alberta at **310-FARM (3276)**, or outside of Alberta at 403-742-7901 for further soil viewer and agricultural information.  
20220524

**Alberta soil information and data**


## Find Your Farm

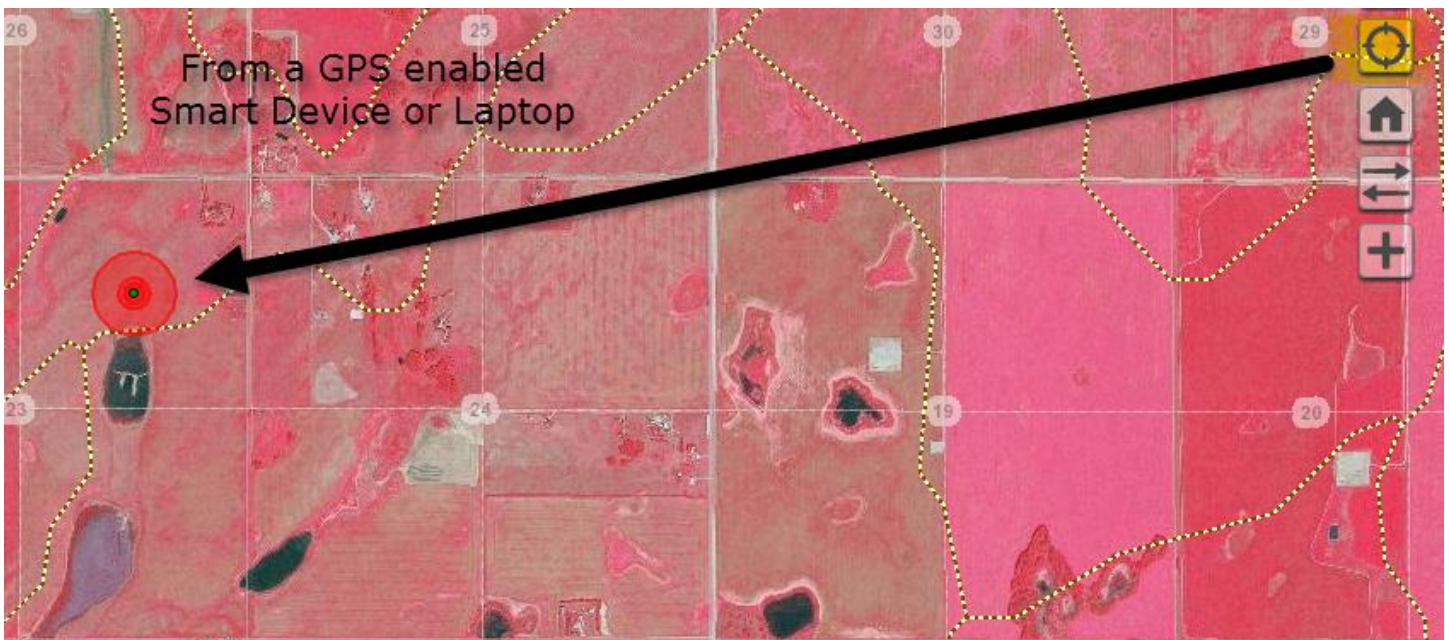
- Open the bookmark window  and press the "Create"  button to create a "By Soil Polygon ID" bookmark by:
  - Typing: "By Soil Polygon ID" the text box in the Bookmark Manager window, and
  - Pressing the add button.

- Left click, tap the full extent icon 

### **By Real Time GPS coordinate on a GPS enabled smart device**

If a GPS receiver is built into or attached as a peripheral to the same computing or smart device is in use, the viewer will search and zoom (magnify) to the real time location of the GPS enabled smart device by left clicking

or tapping the locate position icon .



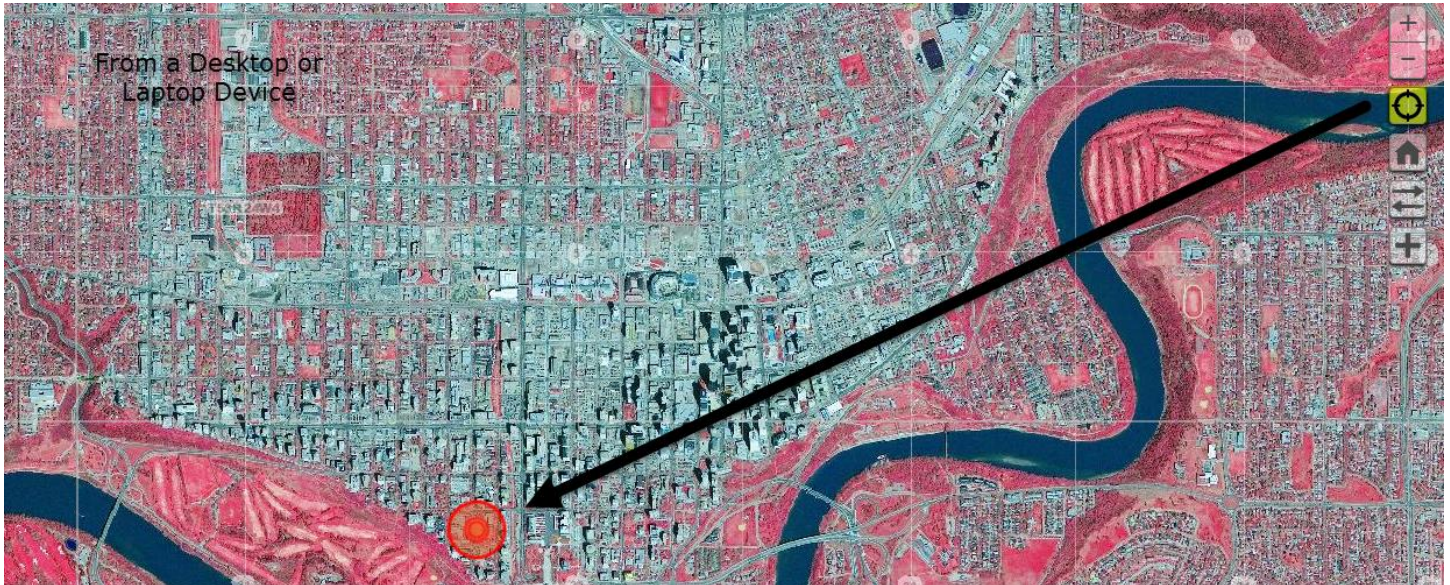
Non GPS enabled desktop and laptop devices search and zoom to the approximate location of the origin of the internet service provider's origin of broadcast.

Contact the [Ag-Info Centre](#), toll-free in Alberta at **310-FARM (3276)**, or outside of Alberta at 403-742-7901 for further soil viewer and agricultural information.  
20220524

# Alberta soil information and data



## Find Your Farm

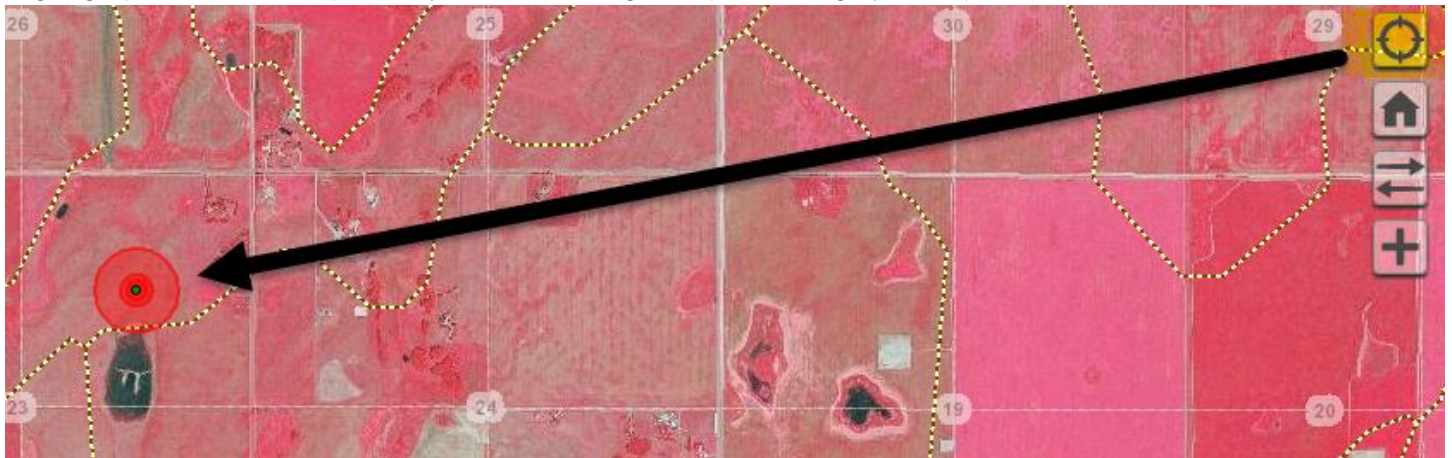


1. There is currently no “automated” way of capturing the associated geographic coordinate pair at the location where the smart device is situated.
2. A process for manually acquiring a latitude and longitude geographic coordinate pair is described in steps 2 and 3 of the next section and may be used to acquire credible coordinates for the current smart device location or any other location in the mapping area of the Alberta Soil Information Viewer.

### ***By Latitude and Longitude Geographic Coordinate pairs***

Another form of search is by Geographic Coordinate pairs.

1. A geographic coordinate pair may come from a global positioning system (GPS) device



Contact the [Ag-Info Centre](#), toll-free in Alberta at **310-FARM (3276)**, or outside of Alberta at 403-742-7901 for further soil viewer and agricultural information.  
20220524

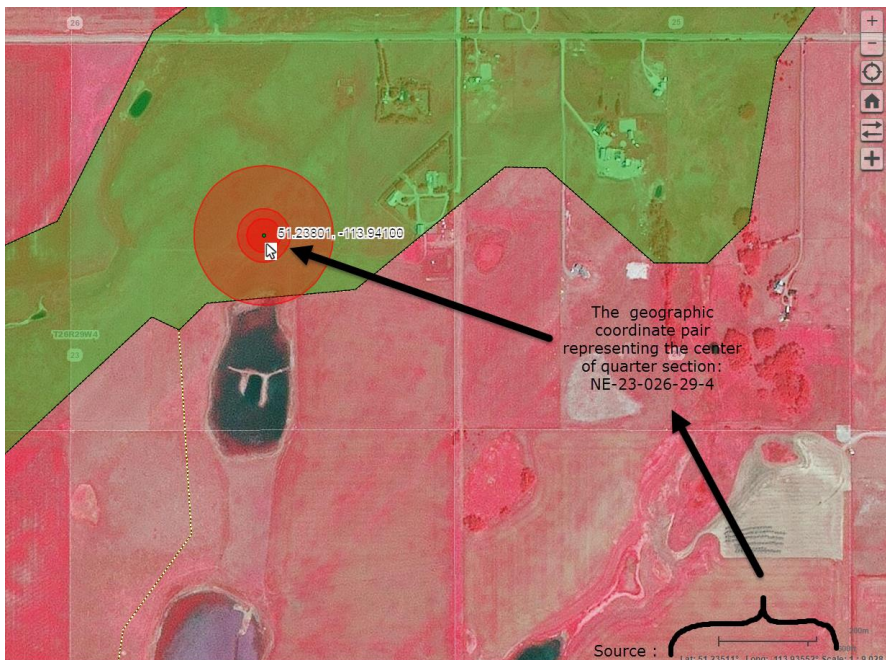
# Alberta soil information and data

## Find Your Farm

2. If a GPS receiver is built in or attached as a peripheral of say a laptop the Alberta Soil Information Viewer:






- a. Left mouse click or tap the “locate position” icon.
  - b. The Viewer searches and zooms (magnifies) to the current location of the GPS enabled smart device, and
  - c. Displays this location within the Alberta Soil information Viewer as a series of three red circles centered on the current location.
3. Hovering the cursor or touching the screen over any location in the mapped area of the Alberta Soil Information viewer a manual record of a latitude and longitude coordinate pair from the Latitude (Lat:) and Longitude (Long: ) cursor or touch display in the bottom right corner of the mapped area of the viewer.



4. Paper maps with sufficient precision are another source of latitude and longitude coordinate pairs along with third party mapping application or web application like Google maps™, or Bing™.
5. Enter the geographic coordinate pair for the **center** of the north east section 23 township 26 range 29 west of 4 (NE-23-026-29-4 → 51.23801, -113.94100):

Contact the [Ag-Info Centre](#), toll-free in Alberta at **310-FARM (3276)**, or outside of Alberta at 403-742-7901 for further soil viewer and agricultural information.  
20220524

# Alberta soil information and data

 51.23801, -113.94100  



You can zoom to one of the following:


- Legal Land Descriptor (e.g., qq-ss-ttt-rr-m or ttt-rr-m)
- Coordinates: Latitude N, Longitude W (e.g., 55,-115)
- Polygon number
- Any placename in Alberta (e.g., Edmonton)

6. When the search is complete, the map area of the viewer should be situated close to the entered geographic coordinate pair:



7. Best results occur when the scale of the mapping area is zoomed or magnified at 1:10 000 or less.

8. Open the bookmark window  and press the “Create”  button to create a “By Lat and Long” bookmark by:
- a. Typing: “By Lat and Long” the text box in the Bookmark Manager window, and
  - b. Pressing the add button.

9. Left click, tap the full extent icon 

Contact the [Ag-Info Centre](#), toll-free in Alberta at **310-FARM (3276)**, or outside of Alberta at 403-742-7901 for further soil viewer and agricultural information.  
20220524

**Alberta soil information and data**

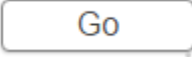
### By Bookmark

The final way to search and magnifying is by:

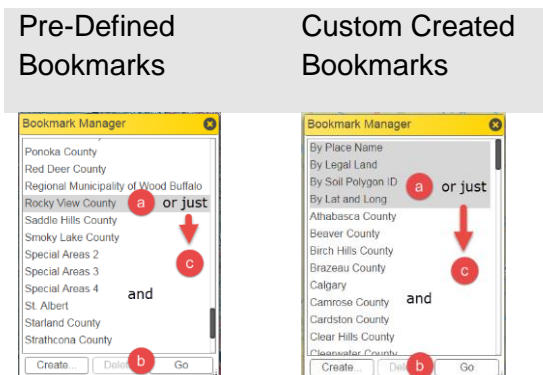
- Pre-defined county and municipality boundaries or
- Custom created bookmarks such as the custom created book marks created throughout previous sections of this document.

This form of bookmark directed searching and zooming occurs by:



1. Left mouse clicking or tapping on the “open bookmark manager window” icon.
2. The Balzac area of interest NE-23-026-29-4, Polygon ID 11002, Lat: Long: pair 51.23801, -113.94100 is situated within the boundaries of “Rocky View County”.
  - a. “Left mouse click” and
  - b. press the “Go button”  or
  - c. Double tap to select the “Rocky View County” predefined bookmark or one of the custom created bookmarks:
    - i. “By Place Name”
    - ii. “By Legal Land”
    - iii. “By Soil Polygon ID”
    - iv. “By Lat and Long”

From the “Bookmark Manager” window:



The Result is that the mapped area of the viewer searches and zooms to the extent of the boundary of the “Rocky View County” border or to the extent and scale of the custom created bookmark.

Contact the [Ag-Info Centre](#), toll-free in Alberta at **310-FARM (3276)**, or outside of Alberta at 403-742-7901 for further soil viewer and agricultural information.  
20220524

# Alberta soil information and data