

# Bass Drum

## - Alberta -

*the Alberta official song*



music by Mary Kieftenbeld  
arr. by Allan Gilliland

Slowly and sustained  $\bullet = 60$

bass drum

**A**

7 3

1 8 9 12

**B** **C**

4 7 3

13 17 24 25

**D** Moderately fast, with rhythmic energy  $\bullet = 132$

4 4

28 29 33

**E**

*mf*

37 38 39 40

*f*

41 42 43 44

**F**

45 46 47 48

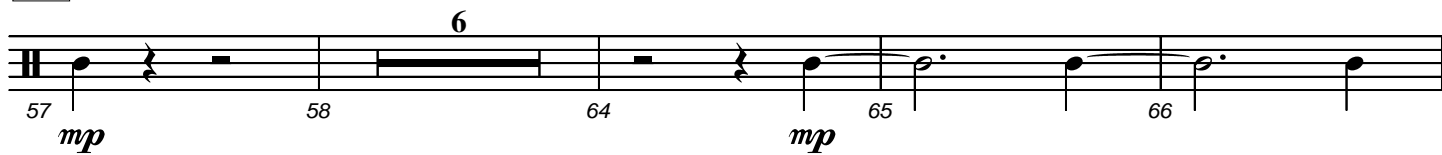
*ff* *f*

49 50 51 52

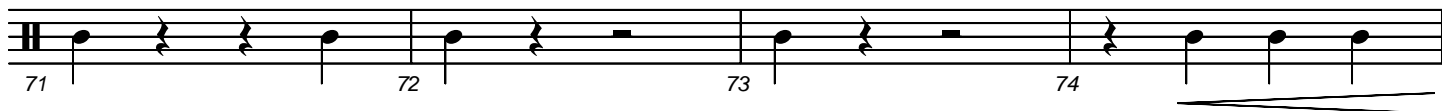
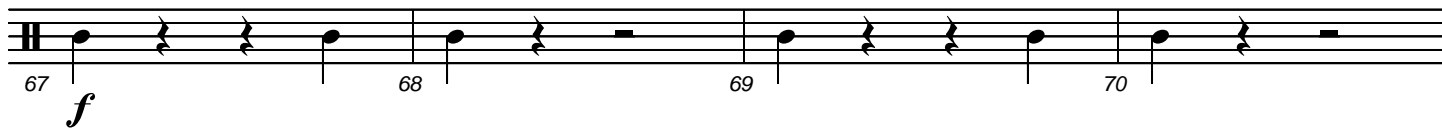
*ff*

53 54 55 56

G



H



J

