

# F Horn 2

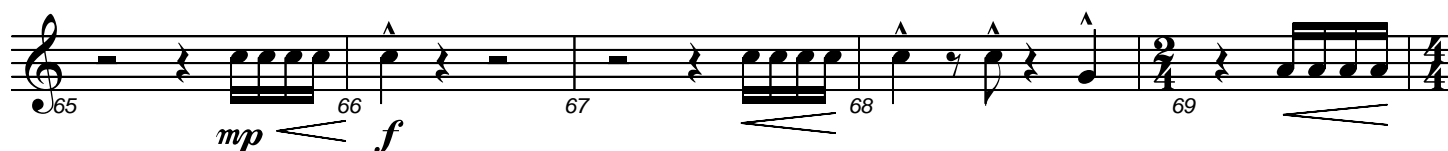
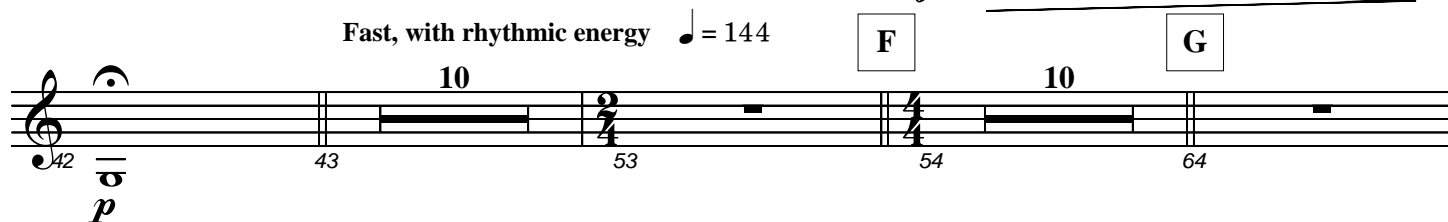
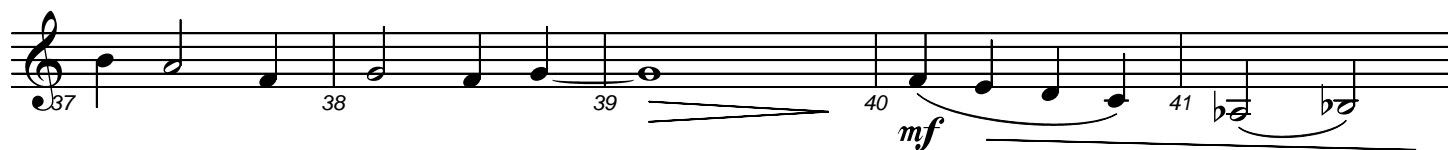
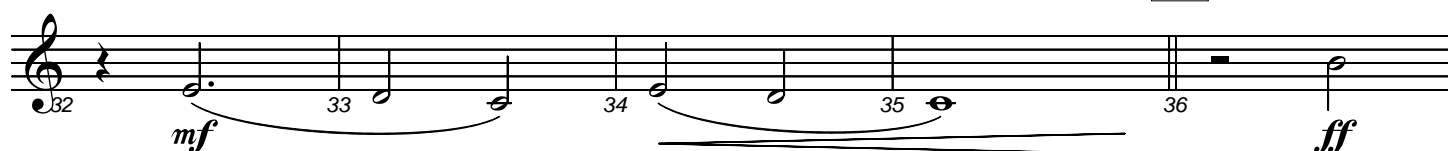
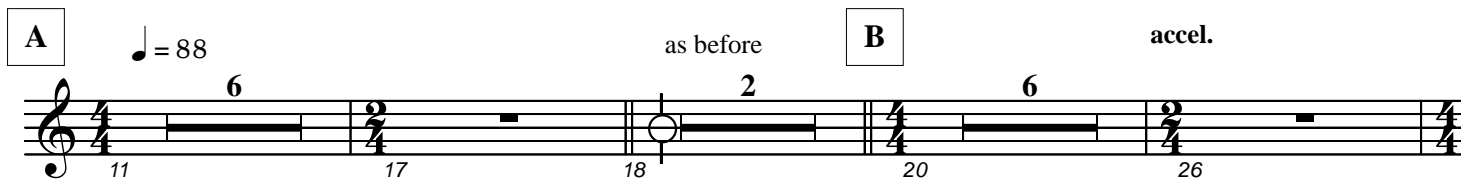
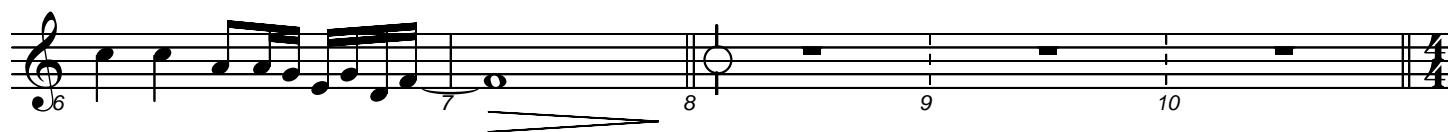
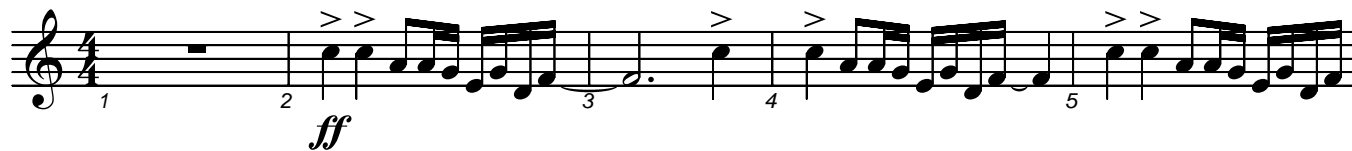
## - Alberta -

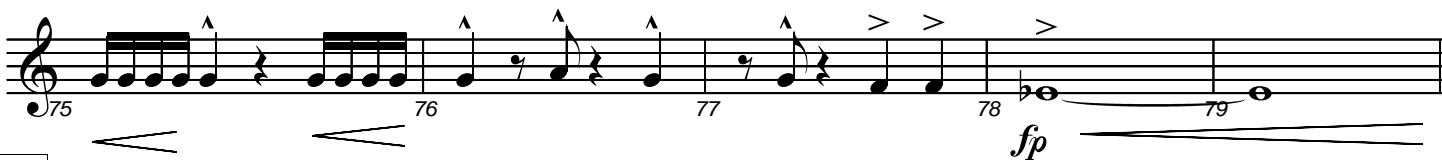
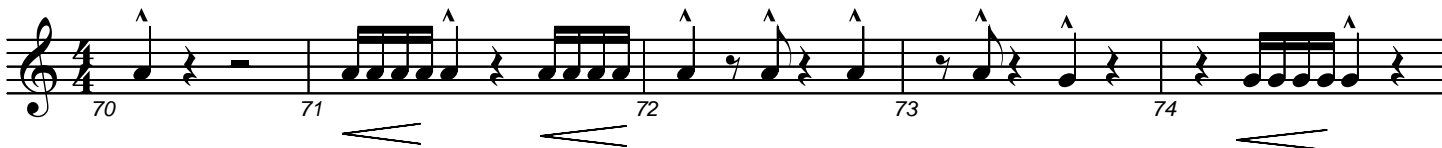
the Alberta official song



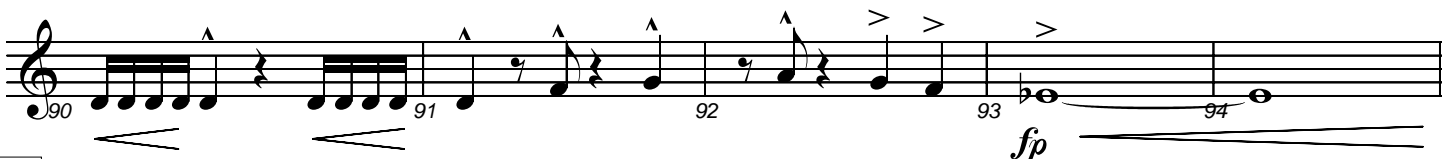
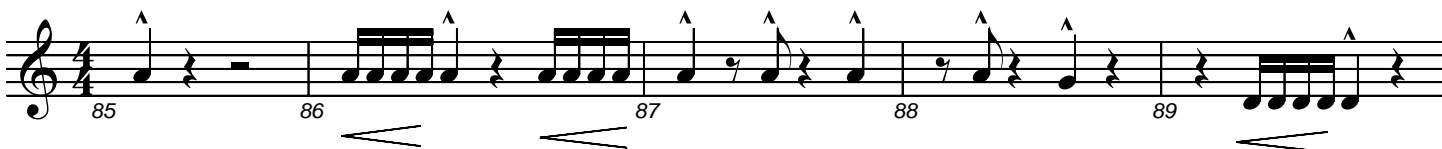
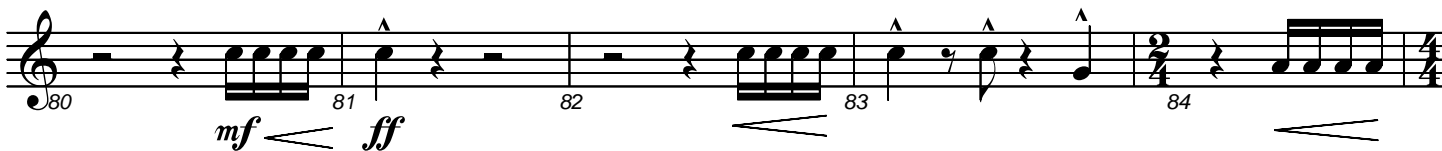
music by Mary Kieftenbeld  
arr. by Allan Gilliland

Boldly ♩ = 84

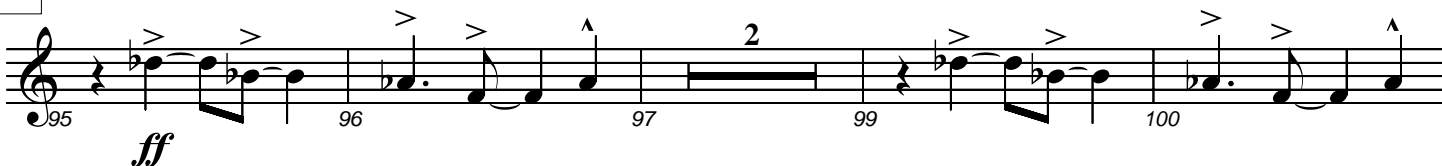




H

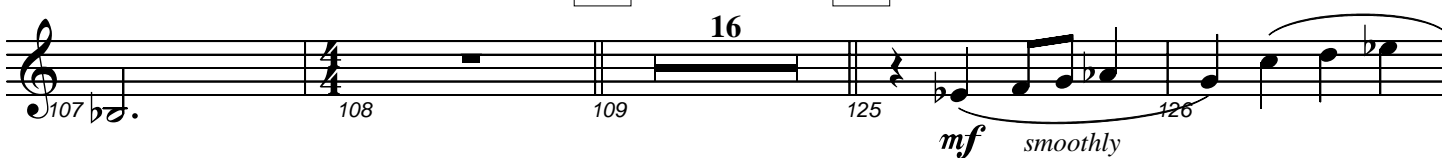


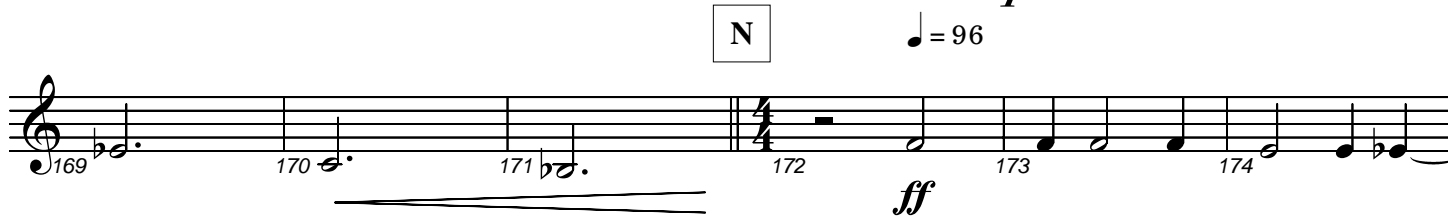
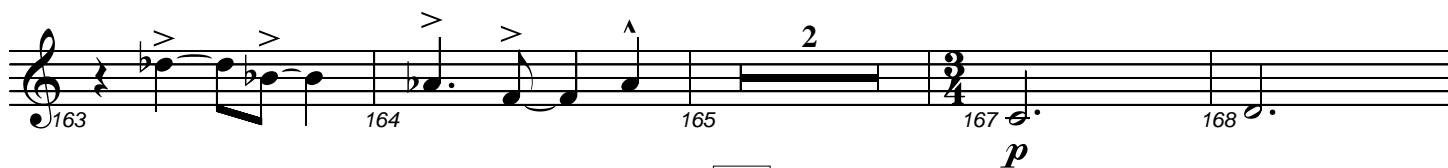
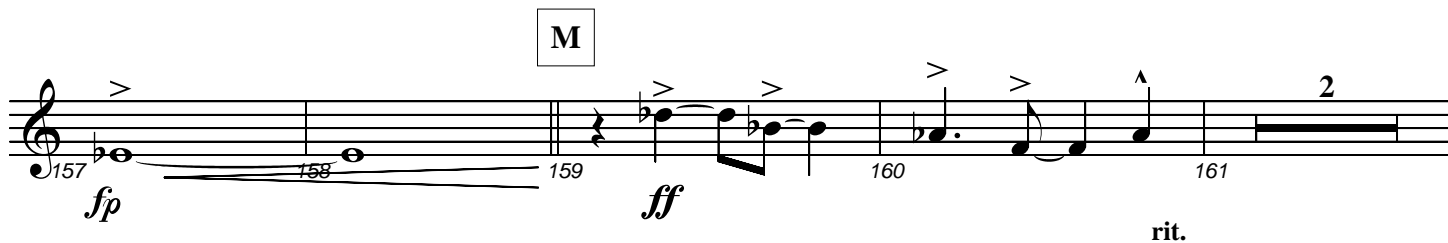
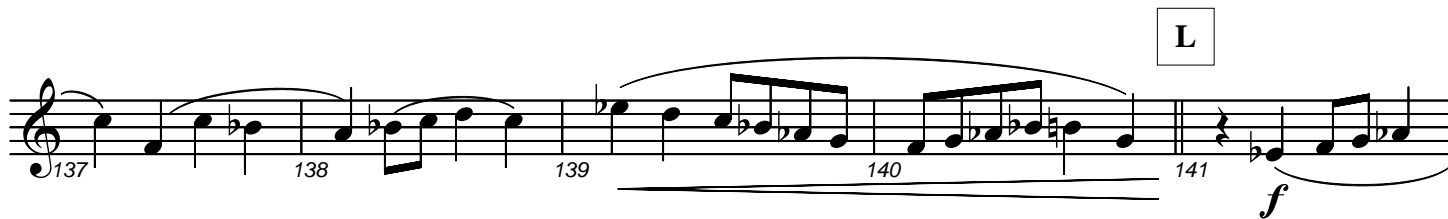
I



J

K





0

Musical score for F. Horn 2, measures 180-190. The score is written on two staves. The first staff contains measures 180 through 185. Measure 180 starts with a treble clef and a key signature of one flat. The music begins with a rest, followed by a half note G4 (marked *ff*), a quarter note A4, a quarter note B4, a quarter note C5, a quarter note D5, a quarter note E5, a quarter note F5, and a half note G5. A crescendo hairpin spans from measure 183 to 184. Measure 184 begins with a half note G5 (marked *mf*), followed by a quarter note F5, a quarter note E5, a quarter note D5, a quarter note C5, and a half note B4. A slur covers measures 184 and 185. Measure 185 contains a half note A4, a quarter note G4, and a quarter note F4. The second staff contains measures 186 through 190. Measure 186 starts with a treble clef and a key signature of one flat, followed by a whole note G4 (marked *p*). Measure 187 contains a whole rest. Measure 188 contains a whole rest. Measure 189 contains a whole rest. Measure 190 contains a whole note G4 (marked *p*) with a fermata. The piece ends with a double bar line.