

# F Horn 1

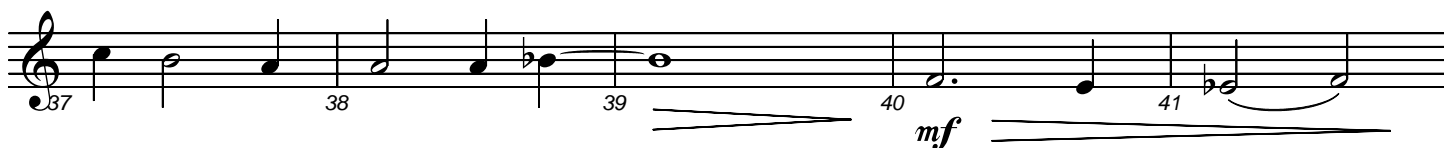
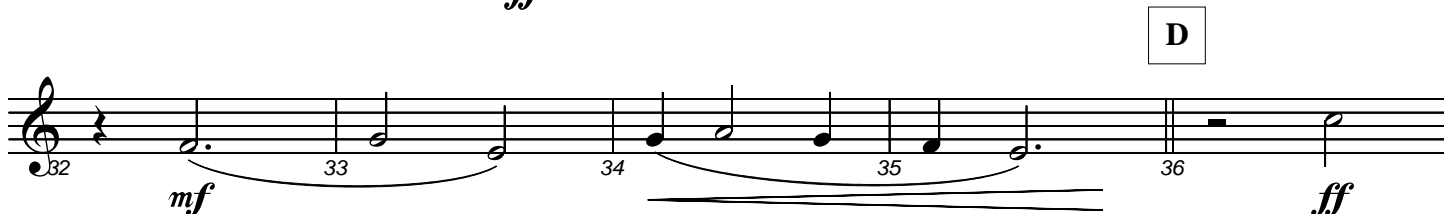
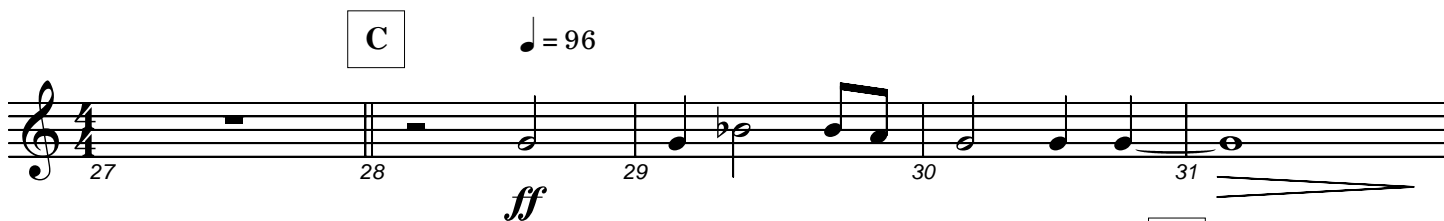
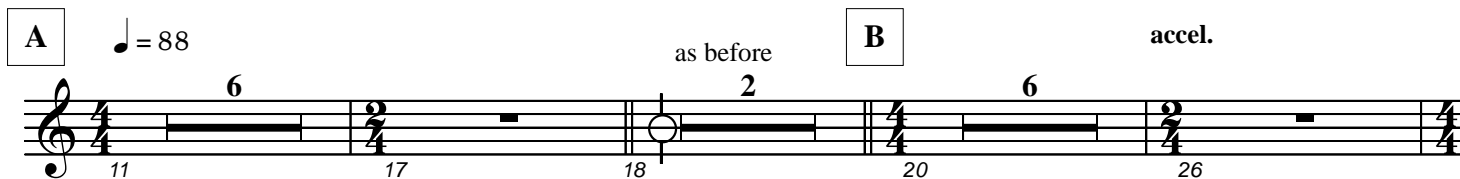
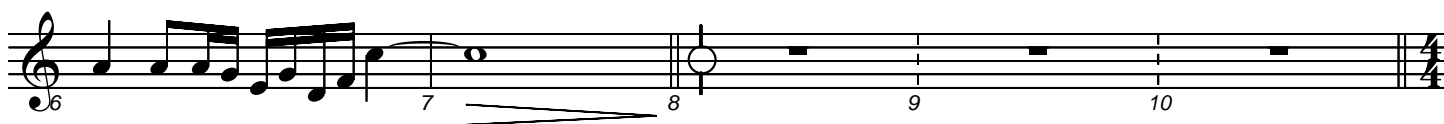
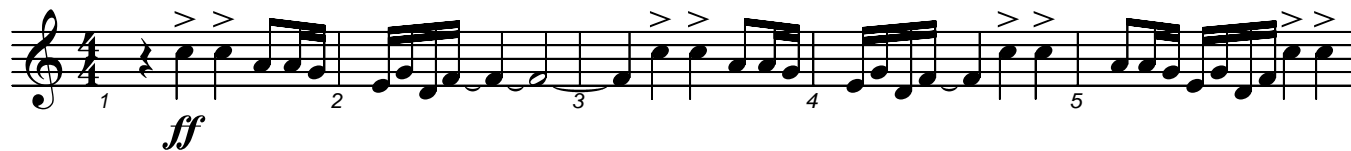
## - Alberta -

*the Alberta official song*

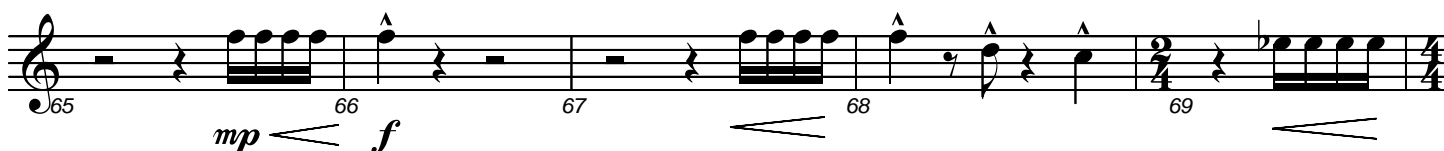
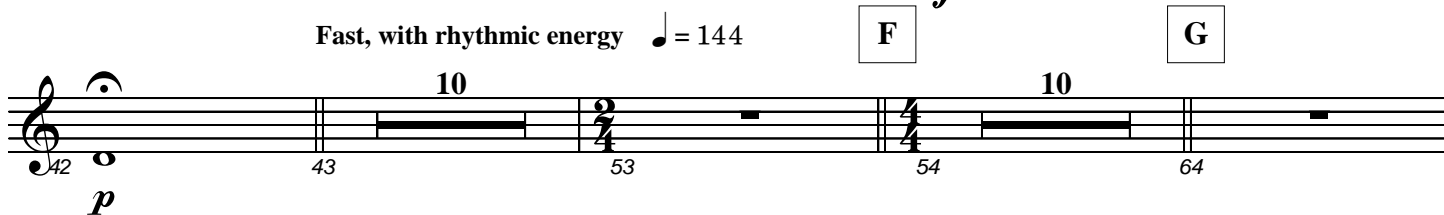


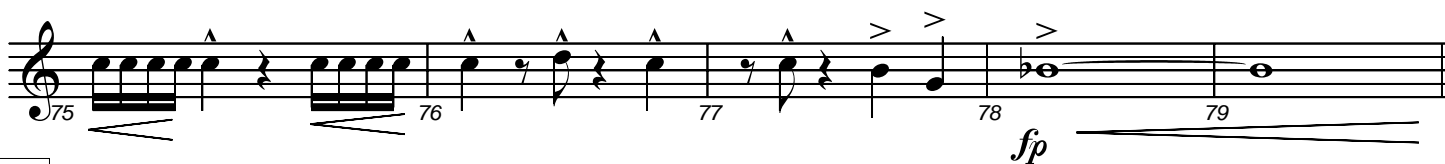
music by Mary Kieftenbeld  
arr. by Allan Gilliland

**Boldly** ♩ = 84

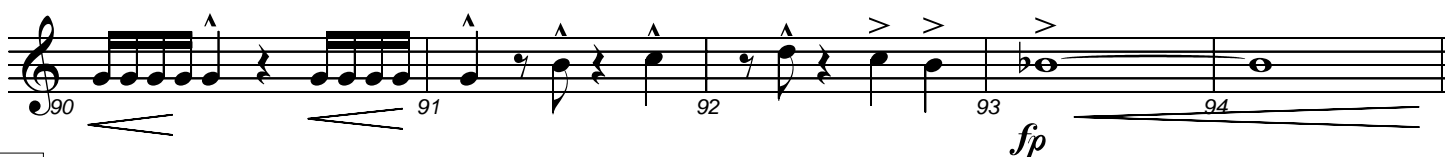
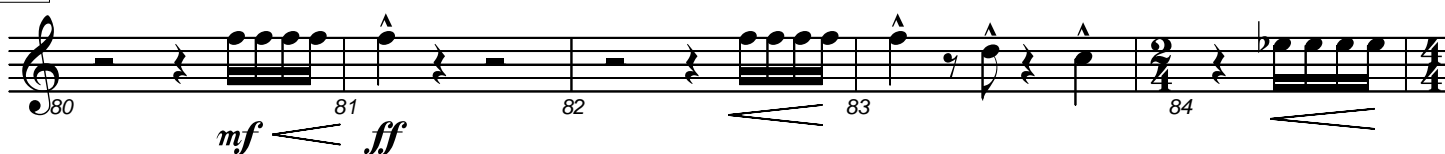


**Fast, with rhythmic energy** ♩ = 144

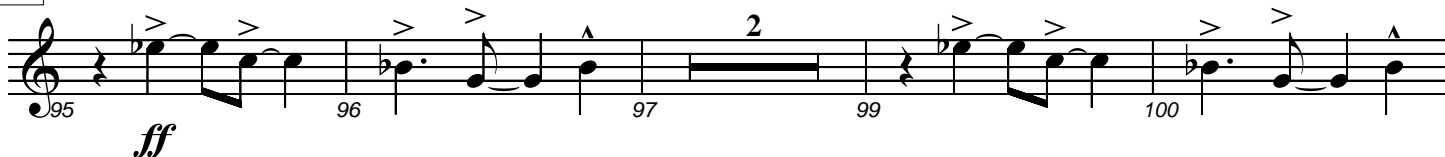




H

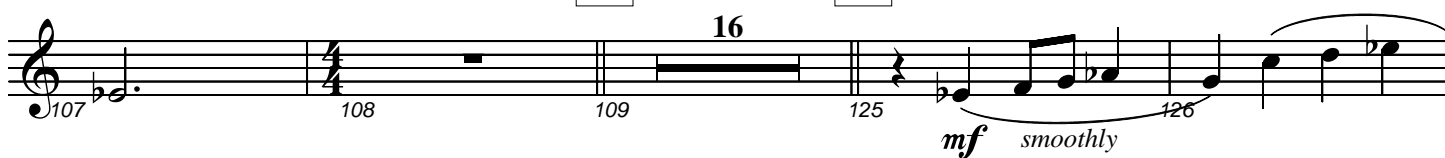


I



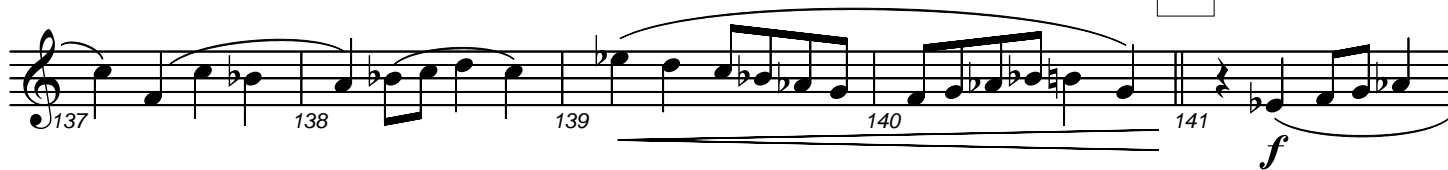
J

K

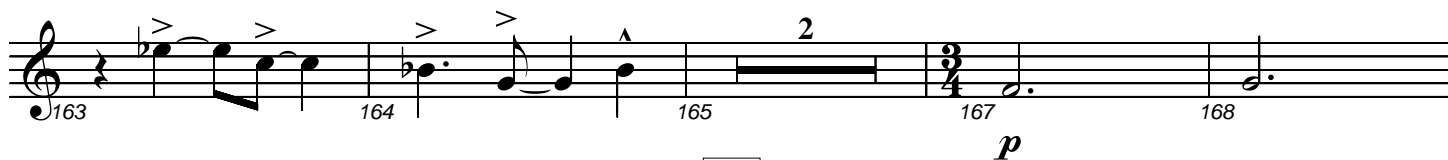
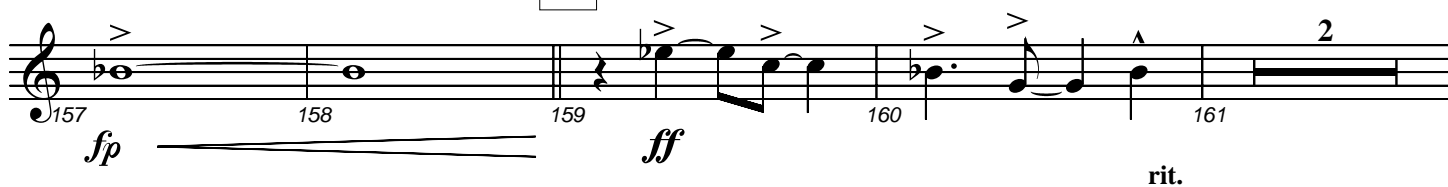




L

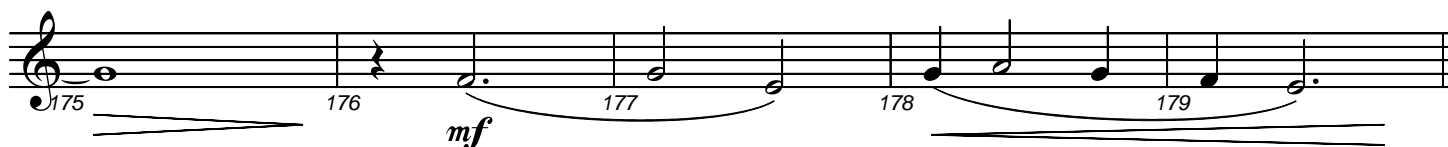
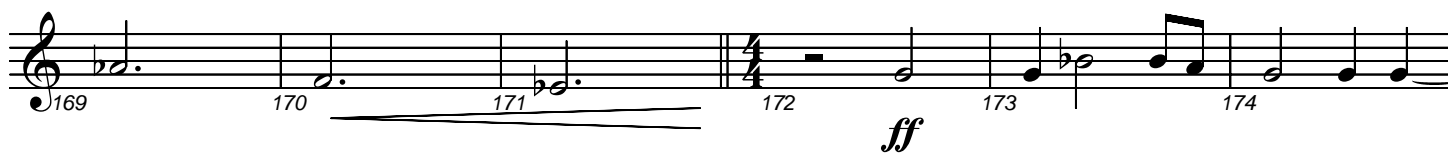


M



N

♩ = 96



0

Musical score for F. Horn 1, measures 180-190. The score is written on two staves. The first staff contains measures 180 through 185. Measure 180 starts with a treble clef and a key signature of one flat. The music begins with a whole rest, followed by a half note G4, a quarter note F4, a quarter note E4, a quarter note D4, a quarter note C4, a quarter note B3, a quarter note A3, and a whole note G3. A crescendo hairpin spans from measure 183 to 184. The dynamic *ff* is marked below measure 180, and *mf* is marked below measure 184. The second staff contains measures 186 through 190. Measure 186 begins with a whole note G3, marked with the dynamic *p*. Measure 187 contains a whole rest. Measures 188 and 189 also contain whole rests. Measure 190 contains a whole note G3, marked with the dynamic *p*. The piece concludes with a double bar line at the end of measure 190.