

Bassoon

- Alberta -

the Alberta official song

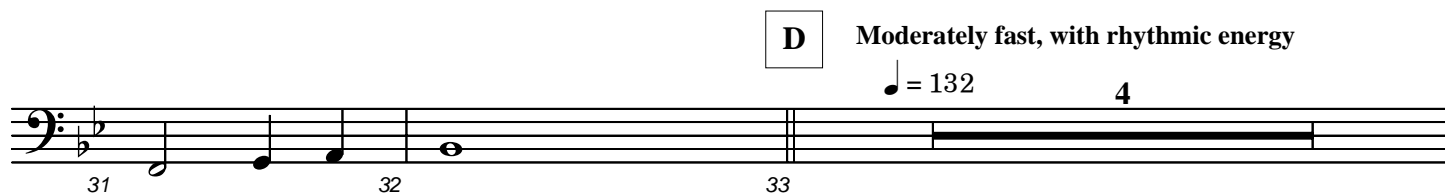
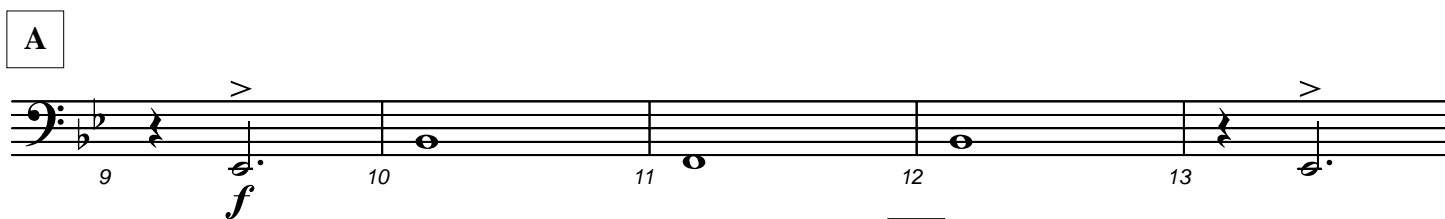


Alberta Centennial

music by Mary Kieftenbeld

arr. by Allan Gilliland

Slowly and sustained $\text{♩} = 60$



E

Section E consists of two staves of music. The first staff contains measures 41 through 44, and the second staff contains measures 45 through 48. The music is written in bass clef with a key signature of one flat. Measure 41 begins with a forte (*f*) dynamic. The notation includes eighth and sixteenth notes, rests, and a crescendo hairpin spanning measures 43 to 48.

F

Section F consists of two staves of music. The first staff contains measures 49 through 52, and the second staff contains measures 53 through 56. The music is written in bass clef with a key signature of one flat. Measure 49 begins with a fortissimo (*ff*) dynamic. The notation includes eighth and sixteenth notes, rests, and a crescendo hairpin spanning measures 51 to 56.

G

Section G consists of two staves of music. The first staff contains measures 57 through 64, and the second staff contains measures 65 through 66. The music is written in bass clef with a key signature of one flat. Measure 57 begins with a seven-measure rest. Measure 65 begins with a mezzo-piano (*mp*) dynamic. The notation includes eighth and sixteenth notes, rests, and a crescendo hairpin spanning measures 65 to 66.

H

Section H consists of two staves of music. The first staff contains measures 67 through 69, and the second staff contains measure 70. The music is written in bass clef with a key signature of one flat. Measure 67 begins with a forte (*f*) dynamic. The notation includes eighth and sixteenth notes, rests, and a crescendo hairpin spanning measures 67 to 70.

J

Section J consists of four staves of music. The first staff contains measures 71 through 75, the second staff contains measures 76 through 80, the third staff contains measures 81 through 84, and the fourth staff contains measure 85. The music is written in bass clef with a key signature of one flat. Measure 75 begins with a fortissimo (*ff*) dynamic. Measure 77 begins with a forte (*f*) dynamic. Measure 81 begins with a fortissimo (*ffp*) dynamic. The notation includes eighth and sixteenth notes, rests, and a crescendo hairpin spanning measures 75 to 85.