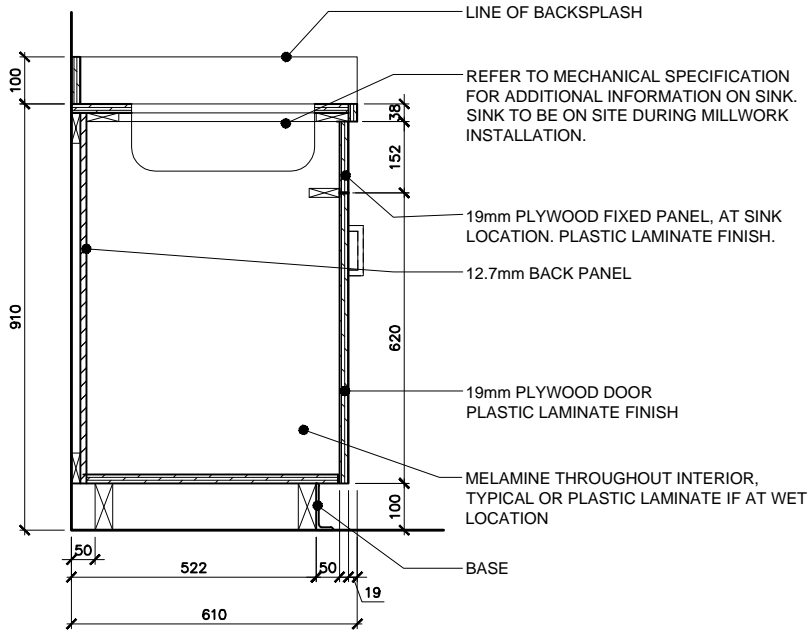


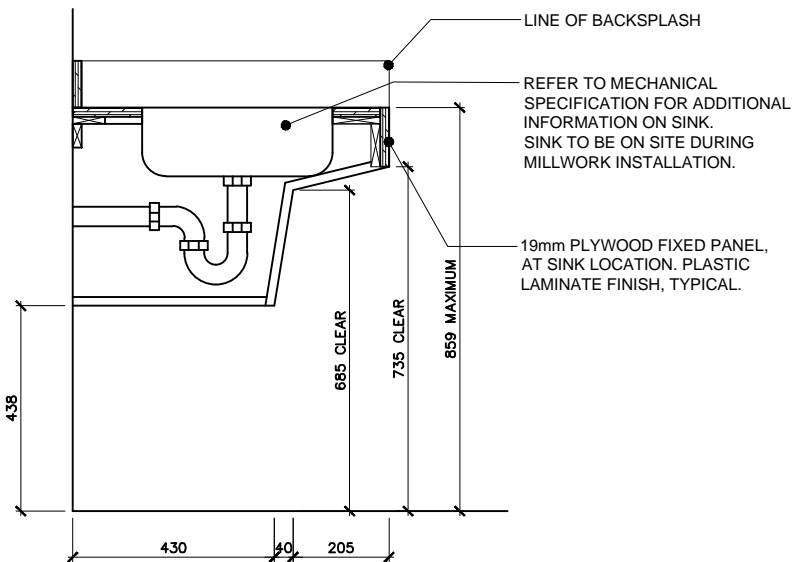
**1** COUNTER WITH WASTE  
Scale: N.T.S

**DETAIL NOTES:**

- PROVIDE SILICONE SEALANT (CLEAR) AT BACK SPLASH AND COUNTER.
- FINISHES: REFER TO FINISH SCHEDULE AND SPECIFICATIONS FOR SPECIFIC INFORMATION.
- PULLS: REFER TO SPECIFICATIONS FOR SPECIFIC INFORMATION.
- BASE AND FINISHES: REFER TO FINISH SCHEDULE FOR SPECIFIC INFORMATION.
- REFER TO SPECIFICATION FOR SPECIFIC HARDWARE INFORMATION.
- WASTE/RECYCLE BINS BY GENERAL CONTRACTOR. REFER TO SPECIFICATIONS FOR SPECIFIC INFORMATION.
- FOR MILLWORK PANEL EDGES (DOORS, GABLES, ENDS, SHELVES, DRAWER FRONTS, ETC.) USE SOLID 3-5mm COLOUR MATCHED PVC EDGING RATHER THAN PLASTIC LAMINATE OR MELAMINE EDGING, FOR DURABILITY (DUE TO TENDENCY OF LAMINATES TO CHIP OR DE-LAMINATE IN THESE APPLICATIONS) OR USE SOLID 3-5mm SPECIES MATCHED WOOD EDGING WITH WOOD VENEER FACES.

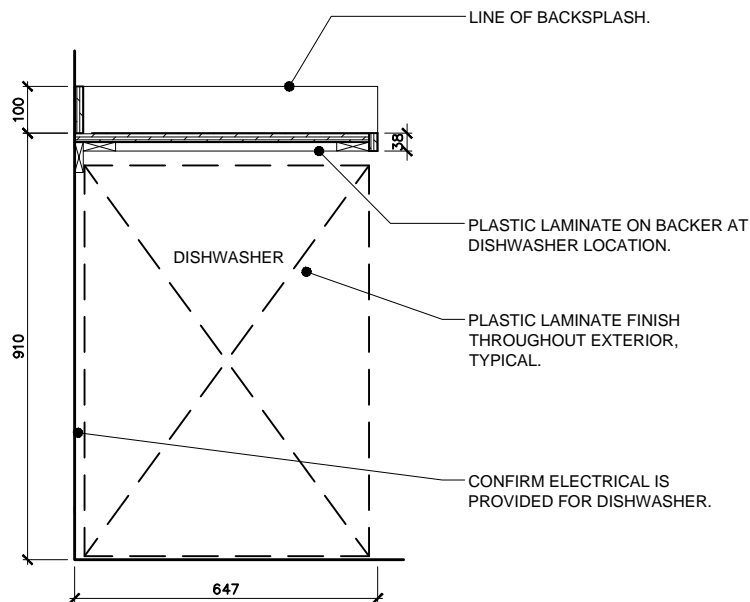


**2A COUNTER WITH SINK**  
Scale: N.T.S



**2B BARRIER - FREE COUNTER WITH SINK**  
Scale: N.T.S

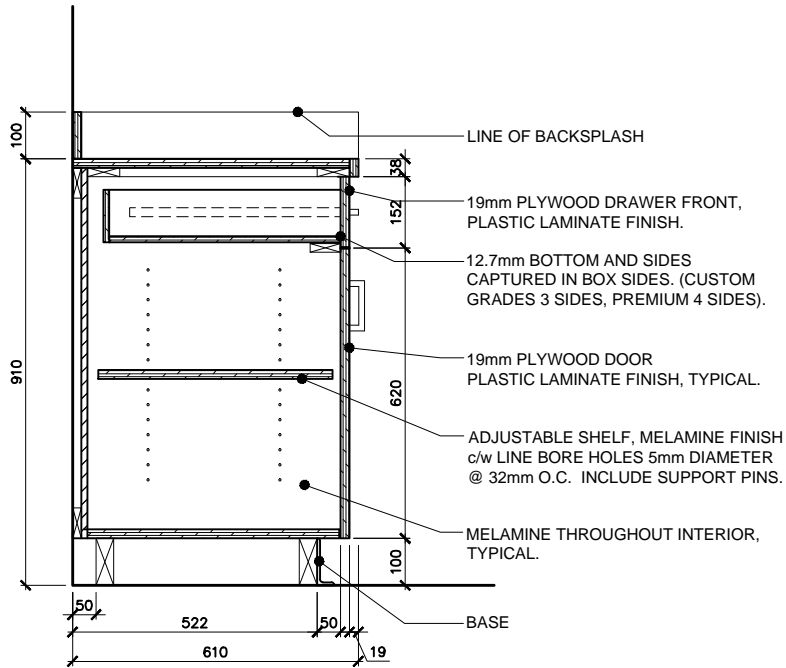
- DETAIL NOTES:**
- PROVIDE SILICONE SEALANT (CLEAR) AT BACK SPLASH AND COUNTER.
  - FINISHES: REFER TO FINISH SCHEDULE AND SPECIFICATIONS FOR SPECIFIC INFORMATION.
  - PULLS: REFER TO SPECIFICATIONS FOR SPECIFIC INFORMATION.
  - BASE AND FINISHES: REFER TO FINISH SCHEDULE FOR SPECIFIC INFORMATION.
  - REFER TO SPECIFICATION FOR SPECIFIC HARDWARE INFORMATION.
  - FOR MILLWORK PANEL EDGES (DOORS, GABLES, ENDS, SHELVES, DRAWER FRONTS, ETC.) USE SOLID 3-5mm COLOUR MATCHED PVC EDGING RATHER THAN PLASTIC LAMINATE OR MELAMINE EDGING, FOR DURABILITY (DUE TO TENDENCY OF LAMINATES TO CHIP OR DE-LAMINATE IN THESE APPLICATIONS) OR USE SOLID 3-5mm SPECIES MATCHED WOOD EDGING WITH WOOD VENEER FACES.



**DETAIL NOTES:**

- PROVIDE SILICONE SEALANT (CLEAR) AT BACK SPLASH AND COUNTER.
- FINISHES: REFER TO FINISH SCHEDULE AND SPECIFICATIONS FOR SPECIFIC INFORMATION.
- PULLS: REFER TO SPECIFICATIONS FOR SPECIFIC INFORMATION.
- BASE AND FINISHES: REFER TO FINISH SCHEDULE FOR SPECIFIC INFORMATION.
- REFER TO SPECIFICATION FOR SPECIFIC HARDWARE INFORMATION.
- FOR MILLWORK PANEL EDGES (DOORS, GABLES, ENDS, SHELVES, DRAWER FRONTS, ETC.) USE SOLID 3-5mm COLOUR MATCHED PVC EDGING RATHER THAN PLASTIC LAMINATE OR MELAMINE EDGING, FOR DURABILITY (DUE TO TENDENCY OF LAMINATES TO CHIP OR DE-LAMINATE IN THESE APPLICATIONS) OR USE SOLID 3-5mm SPECIES MATCHED WOOD EDGING WITH WOOD VENEER FACES.

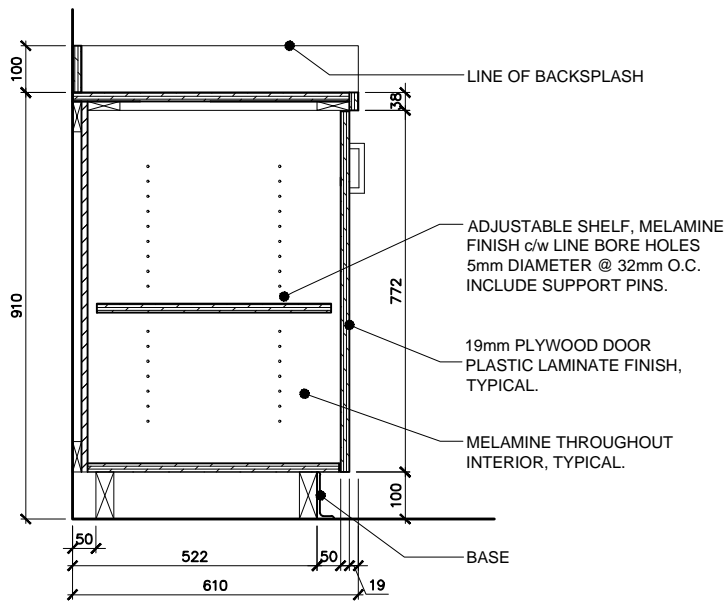
**3** COUNTER WITH DISHWASHER  
Scale: N.T.S



**DETAIL NOTES:**

- PROVIDE SILICONE SEALANT (CLEAR) AT BACK SPLASH AND COUNTER.
- FINISHES: REFER TO FINISH SCHEDULE AND SPECIFICATIONS FOR SPECIFIC INFORMATION.
- PULLS: REFER TO SPECIFICATIONS FOR SPECIFIC INFORMATION.
- BASE AND FINISHES: REFER TO FINISH SCHEDULE FOR SPECIFIC INFORMATION.
- REFER TO SPECIFICATION FOR SPECIFIC HARDWARE INFORMATION.
- FOR MILLWORK PANEL EDGES (DOORS, GABLES, ENDS, SHELVES, DRAWER FRONTS, ETC.) USE SOLID 3-5mm COLOUR MATCHED PVC EDGING RATHER THAN PLASTIC LAMINATE OR MELAMINE EDGING, FOR DURABILITY (DUE TO TENDENCY OF LAMINATES TO CHIP OR DE-LAMINATE IN THESE APPLICATIONS) OR USE SOLID 3-5mm SPECIES MATCHED WOOD EDGING WITH WOOD VENEER FACES.

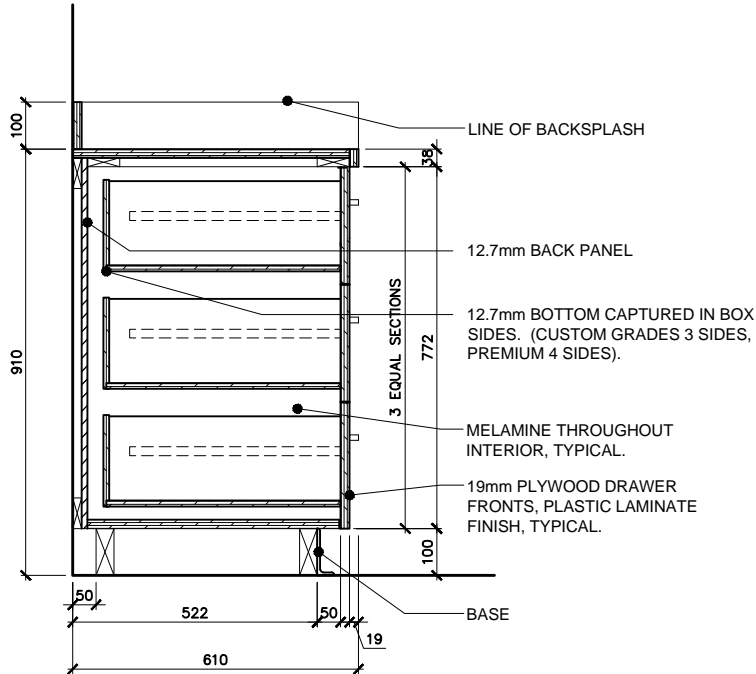
**4 COUNTER WITH SINGLE DRAWER**  
Scale: N.T.S



**DETAIL NOTES:**

- PROVIDE SILICONE SEALANT (CLEAR) AT BACK SPLASH AND COUNTER.
- FINISHES: REFER TO FINISH SCHEDULE AND SPECIFICATIONS FOR SPECIFIC INFORMATION.
- PULLS: REFER TO SPECIFICATIONS FOR SPECIFIC INFORMATION.
- BASE AND FINISHES: REFER TO FINISH SCHEDULE FOR SPECIFIC INFORMATION.
- REFER TO SPECIFICATION FOR SPECIFIC HARDWARE INFORMATION.
- FOR MILLWORK PANEL EDGES (DOORS, GABLES, ENDS, SHELVES, DRAWER FRONTS, ETC.) USE SOLID 3-5mm COLOUR MATCHED PVC EDGING RATHER THAN PLASTIC LAMINATE OR MELAMINE EDGING, FOR DURABILITY (DUE TO TENDENCY OF LAMINATES TO CHIP OR DE-LAMINATE IN THESE APPLICATIONS) OR USE SOLID 3-5mm SPECIES MATCHED WOOD EDGING WITH WOOD VENEER FACES.

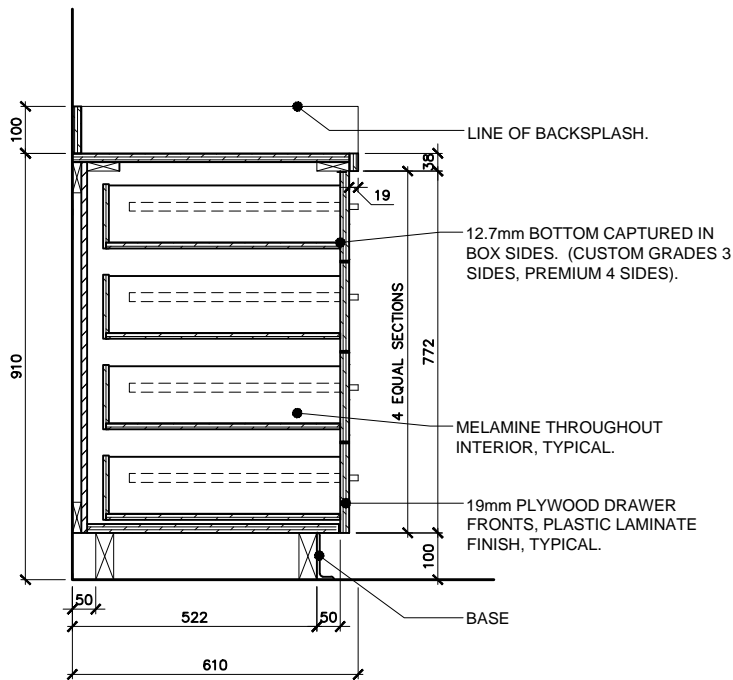
5 **STANDARD COUNTER**  
Scale: N.T.S



- DETAIL NOTES:**
- PROVIDE SILICONE SEALANT (CLEAR) AT BACK SPLASH AND COUNTER.
  - FINISHES: REFER TO FINISH SCHEDULE AND SPECIFICATIONS FOR SPECIFIC INFORMATION.
  - PULLS: REFER TO SPECIFICATIONS FOR SPECIFIC INFORMATION.
  - BASE AND FINISHES: REFER TO FINISH SCHEDULE FOR SPECIFIC INFORMATION.
  - REFER TO SPECIFICATION FOR SPECIFIC HARDWARE INFORMATION.
  - FOR MILLWORK PANEL EDGES (DOORS, GABLES, ENDS, SHELVES, DRAWER FRONTS, ETC.) USE SOLID 3-5mm COLOUR MATCHED PVC EDGING RATHER THAN PLASTIC LAMINATE OR MELAMINE EDGING, FOR DURABILITY (DUE TO TENDENCY OF LAMINATES TO CHIP OR DE-LAMINATE IN THESE APPLICATIONS) OR USE SOLID 3-5mm SPECIES MATCHED WOOD EDGING WITH WOOD VENEER FACES.

**6A COUNTER WITH 3 DRAWERS**  
Scale: N.T.S

<b>Government of Alberta</b> ■ Infrastructure	MILLWORK SECTION			INTERIOR DESIGN SECTION	DETAIL NUMBER <b>F</b>
	DRAWN BY EG	DATE 2015-10-22	CHECKED BY AF	DATE 2015-10-22	



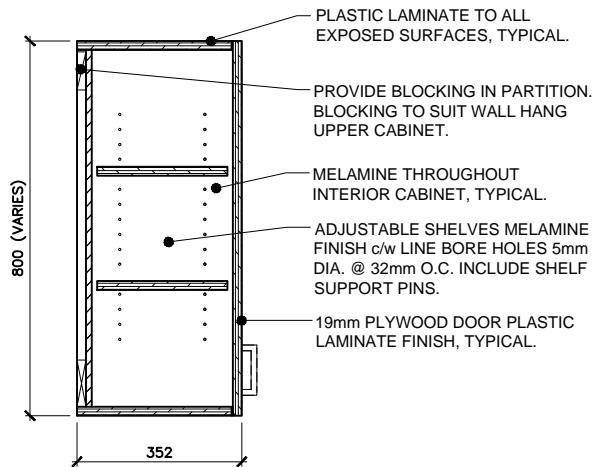
**DETAIL NOTES:**

- PROVIDE SILICONE SEALANT (CLEAR) AT BACK SPLASH AND COUNTER.
- FINISHES: REFER TO FINISH SCHEDULE AND SPECIFICATIONS FOR SPECIFIC INFORMATION.
- PULLS: REFER TO SPECIFICATIONS FOR SPECIFIC INFORMATION.
- BASE AND FINISHES: REFER TO FINISH SCHEDULE FOR SPECIFIC INFORMATION.
- REFER TO SPECIFICATION FOR SPECIFIC HARDWARE INFORMATION.
- FOR MILLWORK PANEL EDGES (DOORS, GABLES, ENDS, SHELVES, DRAWER FRONTS, ETC.) USE SOLID 3-5mm COLOUR MATCHED PVC EDGING RATHER THAN PLASTIC LAMINATE OR MELAMINE EDGING, FOR DURABILITY (DUE TO TENDENCY OF LAMINATES TO CHIP OR DE-LAMINATE IN THESE APPLICATIONS) OR USE SOLID 3-5mm SPECIES MATCHED WOOD EDGING WITH WOOD VENEER FACES.

6B

**COUNTER WITH 4 DRAWERS**

Scale: N.T.S

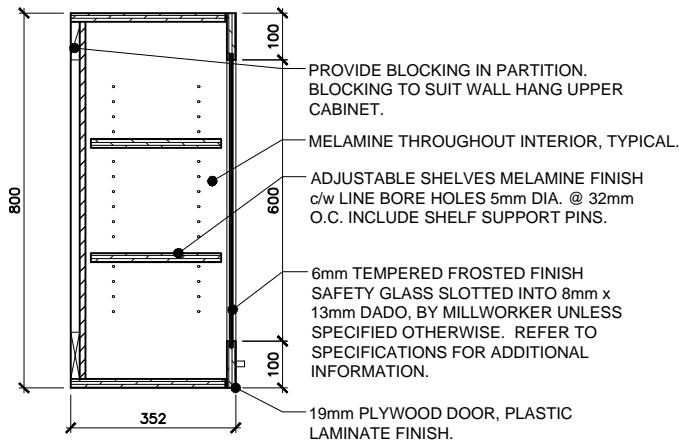


**DETAIL NOTES:**

- PULLS: REFER TO SPECIFICATIONS FOR SPECIFIC INFORMATION.
- FINISHES: REFER TO FINISH SCHEDULE FOR SPECIFIC INFORMATION.
- REFER TO SPECIFICATION FOR SPECIFIC HARDWARE INFORMATION.
- FOR MILLWORK PANEL EDGES (DOORS, GABLES, ENDS, SHELVES, DRAWER FRONTS, ETC.) USE SOLID 3-5mm COLOUR MATCHED PVC EDGING RATHER THAN PLASTIC LAMINATE OR MELAMINE EDGING, FOR DURABILITY (DUE TO TENDENCY OF LAMINATES TO CHIP OR DE-LAMINATE IN THESE APPLICATIONS) OR USE SOLID 3-5mm SPECIES MATCHED WOOD EDGING WITH WOOD VENEER FACES.

**7A** **OVERHEAD CABINET**  
Scale: N.T.S

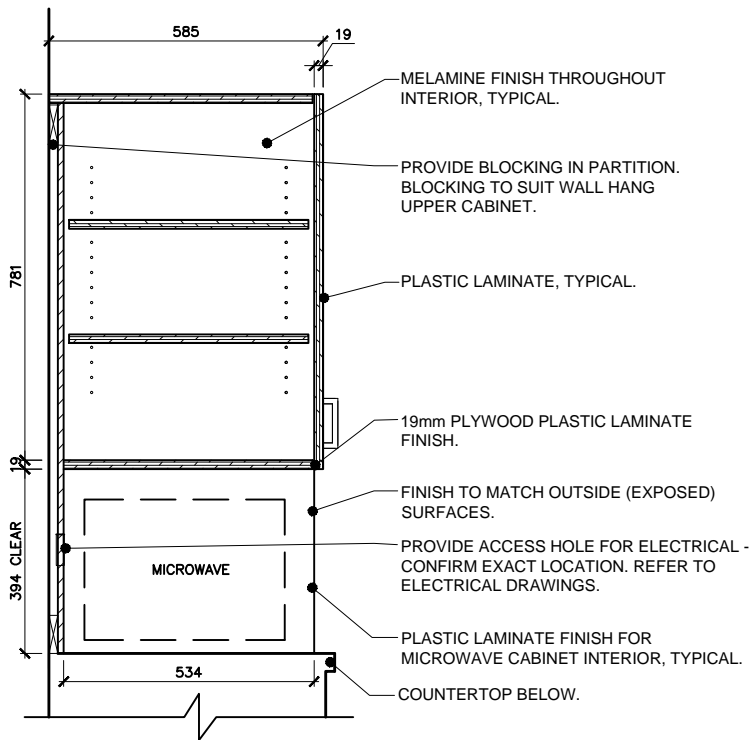




- DETAIL NOTES:**
- PULLS: REFER TO SPECIFICATIONS FOR SPECIFIC INFORMATION.
  - FINISHES: REFER TO FINISH SCHEDULE FOR SPECIFIC INFORMATION.
  - REFER TO SPECIFICATION FOR SPECIFIC HARDWARE INFORMATION.
  - FOR MILLWORK PANEL EDGES (DOORS, GABLES, ENDS, SHELVES, DRAWER FRONTS, ETC.) USE SOLID 3-5mm COLOUR MATCHED PVC EDGING RATHER THAN PLASTIC LAMINATE OR MELAMINE EDGING, FOR DURABILITY (DUE TO TENDENCY OF LAMINATES TO CHIP OR DE-LAMINATE IN THESE APPLICATIONS) OR USE SOLID 3-5mm SPECIES MATCHED WOOD EDGING WITH WOOD VENEER FACES.

**7B OVERHEAD CABINET WITH GLASS**  
 Scale: N.T.S

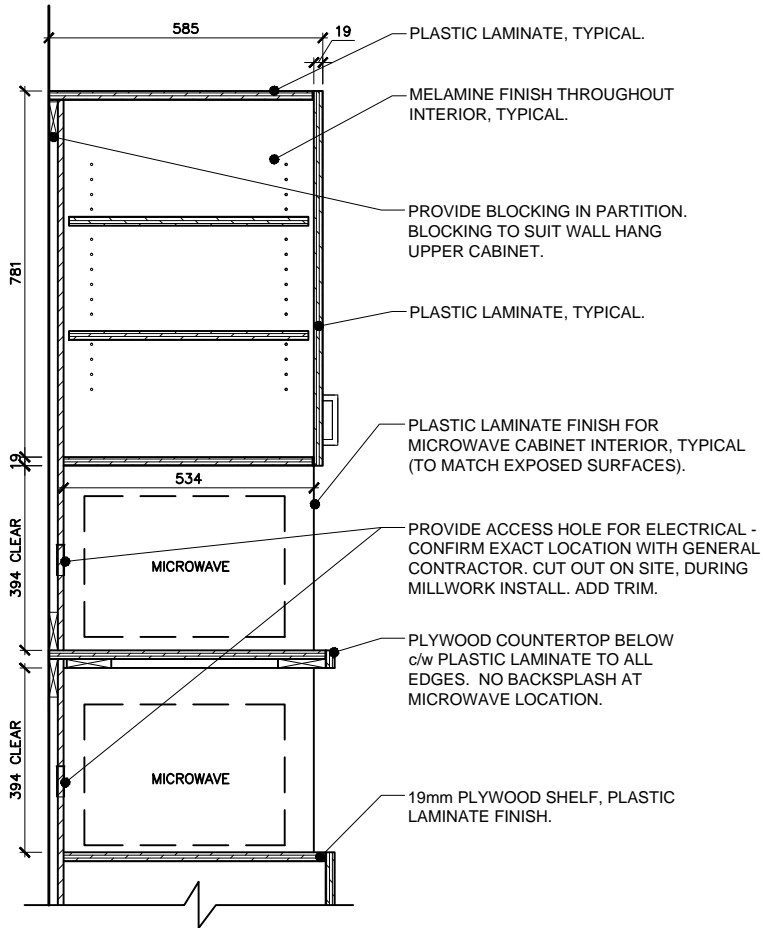
<b>Government of Alberta</b> ■ <b>Infrastructure</b>	MILLWORK SECTION			INTERIOR DESIGN SECTION	DETAIL NUMBER <b>1</b>
	DRAWN BY EG	DATE 2015-10-22	CHECKED BY AF	DATE 2015-10-22	



**DETAIL NOTES:**

- PROVIDE SILICONE SEALANT (CLEAR) AT BACK SPLASH AND COUNTER.
- FINISHES: REFER TO FINISH SCHEDULE AND SPECIFICATIONS FOR SPECIFIC INFORMATION.
- PULLS: REFER TO SPECIFICATIONS FOR SPECIFIC INFORMATION.
- BASE AND FINISHES: REFER TO FINISH SCHEDULE FOR SPECIFIC INFORMATION.
- REFER TO SPECIFICATION FOR SPECIFIC HARDWARE INFORMATION.
- CONFIRM MICROWAVE SIZE WITH CLIENT.
- FOR MILLWORK PANEL EDGES (DOORS, GABLES, ENDS, SHELVES, DRAWER FRONTS, ETC.) USE SOLID 3-5mm COLOUR MATCHED PVC EDGING RATHER THAN PLASTIC LAMINATE OR MELAMINE EDGING, FOR DURABILITY (DUE TO TENDENCY OF LAMINATES TO CHIP OR DE-LAMINATE IN THESE APPLICATIONS) OR USE SOLID 3-5mm SPECIES MATCHED WOOD EDGING WITH WOOD VENEER FACES.

**8A** SINGLE MICROWAVE CABINET  
Scale: N.T.S



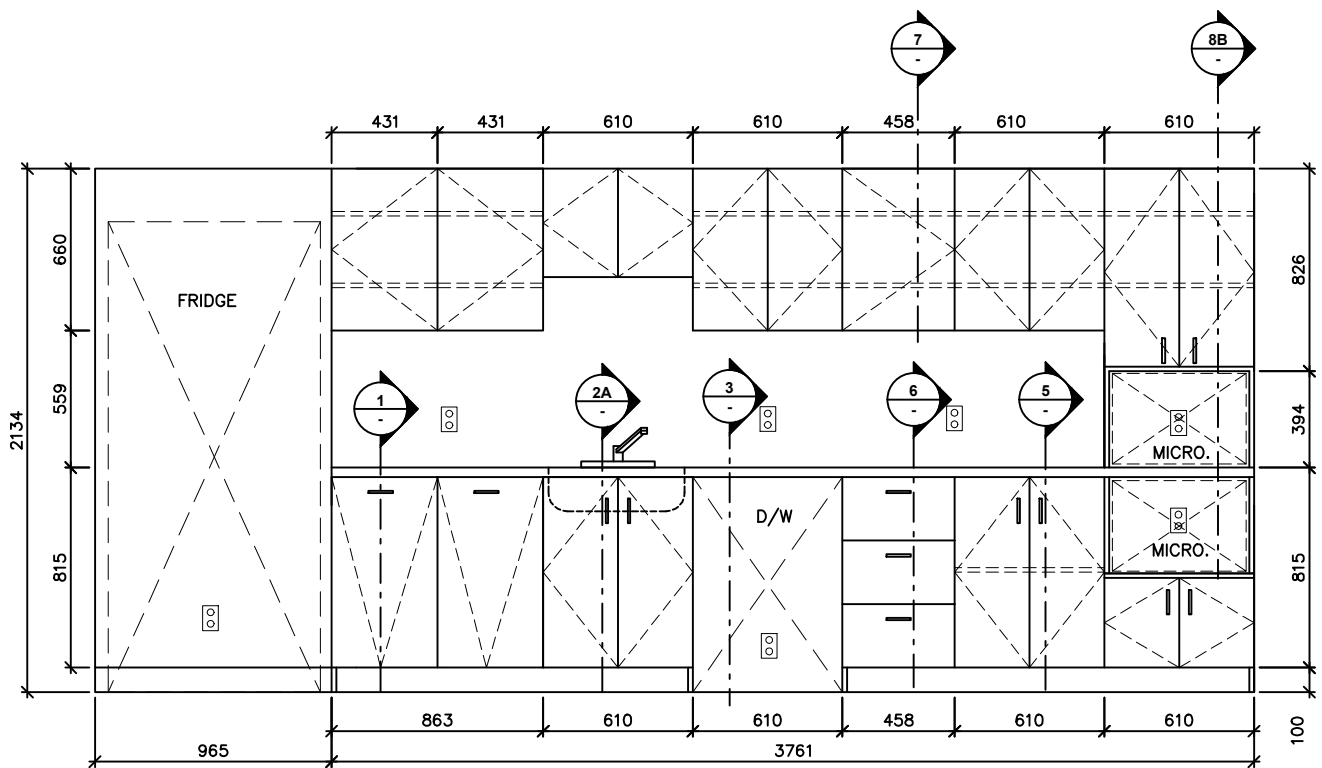
**DETAIL NOTES:**

- PROVIDE SILICONE SEALANT (CLEAR) AT BACK SPLASH AND COUNTER.
- FINISHES: REFER TO FINISH SCHEDULE AND SPECIFICATIONS FOR SPECIFIC INFORMATION.
- PULLS: REFER TO SPECIFICATIONS FOR SPECIFIC INFORMATION.
- BASE AND FINISHES: REFER TO FINISH SCHEDULE FOR SPECIFIC INFORMATION.
- REFER TO SPECIFICATION FOR SPECIFIC HARDWARE INFORMATION.
- CONFIRM MICROWAVE SIZE WITH CLIENT.
- FOR MILLWORK PANEL EDGES (DOORS, GABLES, ENDS, SHELVES, DRAWER FRONTS, ETC.) USE SOLID 3-5mm COLOUR MATCHED PVC EDGING RATHER THAN PLASTIC LAMINATE OR MELAMINE EDGING, FOR DURABILITY (DUE TO TENDENCY OF LAMINATES TO CHIP OR DE-LAMINATE IN THESE APPLICATIONS) OR USE SOLID 3-5mm SPECIES MATCHED WOOD EDGING WITH WOOD VENEER FACES.

8B

**DOUBLE MICROWAVES CABINET**

Scale: N.T.S



**MILLWORK SECTION  
KITCHENETTE**

INTERIOR DESIGN SECTION

DETAIL  
NUMBER

DRAWN BY  
EG

DATE  
2015-10-22

CHECKED BY  
AF

DATE  
2015-10-22

